

Client Group Analysis

**Quarterly bulletin on families
with children on key benefits**

February 2003

Contents

Definitions and conventions	1
Main Findings	1
Tables and charts.....	2
<i>Children on Benefit</i>	2
Table 1 Children and young adult dependants of claimants of key benefits by statistical group: February 2001 to February 2003.....	2
Table 2 Children and young adult dependants of claimants of key benefits by statistical group of family & family type: February 2003.....	3
Table 3 Children and young adult dependants of claimants of key benefits by family type: February 2001 to February 2003.....	4
Table 4 Children and young adult dependants of claimants of key benefits by statistical group of family and age of youngest child: February 2003.....	4
Table 5 Children and young adult dependants of key benefits by statistical group of family and duration of claim: February 2003.....	6
Table 6: Children and young adult dependants of claimants of key benefits by duration of claim: February 2001 to February 2003.....	7
Table 7 Children and young adult dependants of claimants of key benefits by Government Office Region: February 2003.....	8
Table 8 Children and young adult dependants of claimants of combinations of key benefits: February 2003.....	10
<i>Families on Benefit</i>	11
Table 9 Families on key benefits by statistical group and duration of claim: February 2003	11
Table 10 Families on key benefits by duration of claim: February 2001 to February 2003.....	11
Table 11 Families on key benefits by statistical group and age of youngest child: February 2003.....	12
Table 12 Families on key benefits with children and/or young adult dependants: February 2001 to February 2003.....	13
Table 13 Families on key benefits by statistical group and number of children: February 2003.....	13
<i>Children and Families claiming benefit and/or receiving tax credits</i>	14
Table 14 Children and young adult dependants of claimants of key benefits and/or recipients of tax credits by statistical group of family: February 2001 to February 2003	15
Table 15 Children and young adult dependants of claimants of key benefits and/or recipients of tax credits by statistical group of family & family type: February 2003.....	15

Table 16 Children and young adult dependants of claimants of key benefits and/or recipients of tax credits by statistical group of family and age of child: February 2003.....	16
Table 17 Children and young adult dependants of claimants of key benefits and/or recipients of tax credits by statistical group of family and duration of claim: February 2003.....	16
Table 18 Families on key benefits and/or recipients of tax credits by statistical group of family and duration: February 2003.....	17
Table 19 Families on key benefits and/or recipients of tax credits by statistical group of family and age of youngest child: February 2003.....	17
Table 20 Families on key benefits and/or recipients of tax credits by statistical group and number of children: February 2003.....	18
Appendices	19
<i>Appendix 1 – Child Benefit</i>	19
Child Benefit caseload: Families and children , February 2003.....	19
Child Benefit families by number of children, February 2003	19
Child Benefit caseload by age of children, February 2003.....	20
<i>Appendix 2 – Child Support Agency</i>	21
Table 1 Number of NRPs with a full maintenance assessment and average value of assessment: February 2002 to February 2003.....	21
Table 2 Benefit Status of PWC, February 2002 – February 2003: full assessments	22
Table 3 Compliance levels for 'live and fully assessed' cases, February 2002 to February 2003	22
<i>Appendix 3 – Maternity Allowance</i>	24
Methodology	25

Contact point for enquiries:

Mr Paul McReady
Information and Analysis Directorate (IAD)
Information Centre Analysis Team (ICAT)
Room BP5201, Dunstanburgh House
Longbenton
Newcastle-upon-Tyne
NE98 1YX

Telephone: 0191-225-5550
(GTN 522 55550)

Fax: 0191-225-3193
(GTN 522 53193)

e-mail: paul.mcready@dwp.gsi.gov.uk

Definitions and conventions

Children

The 'children' analyses are based on children in families where the claimant receives an additional allowance of benefit for children or young adult dependants (i.e. those aged 16-18 and still in full-time education); AND those children in families in receipt of contribution-based JSA or JSA National Insurance credits only, with children or young adult dependants recorded in the assessment. Additional amounts are payable for all dependant children in families receiving income related benefits (i.e. Income Support or Jobseeker's Allowance (Income Based)) or tax credits. The main gaps are children of claimants of Incapacity Benefit and Severe Disablement Allowance, for whom children information is incomplete; and children of claimants of Disability Living Allowance, for whom no children information is recorded.

Families

The 'family' tables in this publication are based on family units including children as defined above (e.g. a couple with children, a lone parent with children) and claiming a key benefit/ tax credit.

Key Benefits

Jobseeker's Allowance (JSA)
Incapacity Benefit (IB)
Severe Disablement Allowance (SDA)
Disability Living Allowance (DLA)
Income Support (IS)

Other Benefits

Child Benefit, Maternity Allowance and the Child Support Agency are not included in the main tables. However, information is included in Appendices 1 to 3.

Tax Credits

Working Families' Tax Credit (WFTC)
Disabled Person's Tax Credit (DPTC)

Symbols and conventions

Working age is: 16 to 64 years for men and 16 to 59 years for women.
Population estimates for children aged 0-15 are mid-year from 2001.
Population figures for young adult dependants are derived from Child Benefit data.

“-“ less than 500
“.” not applicable
“..” not available

Statistical group

Claimants and their families have been allocated to statistical groups to give an indication of the main reason why they are claiming benefit. This is only one of the possible ways in which claimants could be classified and alternative classifications are possible.

Families are assigned to statistical group according to the following hierarchy:

<i>If claimant receives</i>	JSA (including credits)	<i>then family assigned to:</i>	Unemployed
<i>Otherwise, if claimant receives</i>	IB (including credits)	“ “	Sick / Disabled
“ “	SDA	“ “	Sick / Disabled
“ “	IS, with disability premium	“ “	Sick / Disabled
“ “	IS, single	“ “	Lone Parents
“ “	IS	“ “	Others

For example, if a claimant who is single receives IS but no disability premium then the family is assigned to 'Lone Parents'; but they also receive the disability premium then the family is assigned to 'Sick / Disabled'.

Main Findings

- At February 2003, 2.5 million children were living in families claiming a key benefit and receiving additional benefit for them (the term 'children' refers collectively to children aged 0-15 and young adult dependants aged 16-18 in full-time education). This figure is down 2.2% from last year. While numbers classed as 'Unemployed' fell by 6.6% over this period, and those classed as 'Lone Parents' by 2.3% the Sick / Disabled fell by 0.2% (Table 1).
- Although the number of children less than 16 years old, living in families where the benefit claimant was single, fell from the previous year (as did the number where the claimant had a partner), a greater *proportion* of children (under 16) were living in families where the claimant was single (72.7% compared with 72.2% a year ago) (Table 3).
- Amongst the Sick /Disabled Group proportionally fewer children were under the age of five compared to other statistical groups. This reflects the older age profile of those claiming a sickness and/or disability benefit (although some of this group's ages were unknown) (Table 4)
- Of those children in families on a key benefit, 65% had been on benefit for at least two years. This increased from 63% in February 2002. For the Sick /Disabled group the figure was higher: 77% (Table 5) at February 2003 compared to 76% at February 2002.
- The percentage of children (aged under 16 or aged 16-18 and in full-time education) living in families claiming a key benefit varied from 28% in the London Government Office Region (GOR) down to 13% in the South East and South West GORs (Table 7), showing a variation between local authorities in regions.
- 67% of 'key benefit' children were in families that were claiming IS only (Table 8).
- While 4.2% of families claiming child benefit had four or more children (February 2003), the figure was 8.5% for families on key benefits. For the Unemployed statistical group the figure was higher: 11.4% (Table 13).

Tables and charts

Children on Benefit

Table 1 Children and young adult dependants of claimants of key benefits by statistical group: February 2001 to February 2003

	<i>Thousands and percentages</i>					
	February-01		February-02		February-03	
	Number of children/dependants ¹					
		%		%		%
All statistical groups	2,626	100	2,513	100	2,458	100
Unemployed	257	10	211	8	197	8
Sick /Disabled	657	25	658	26	657	27
Lone Parents	1,647	63	1,585	63	1,548	63
Others	65	2	59	2	57	2

Notes:

1 Children aged under 16 and young adults aged 16 to 18 for whom additional benefit allowance payable (see definitions and conventions).

- At February 2003, 2.5 million children (19.0% of the total population of children aged under 16 and young adults aged 16 to 18 in full-time education), were living in families claiming a key benefit and receiving additional amounts of benefit for them. This represents a fall of 2.2% from the previous year.
- While numbers classed as 'Unemployed' fell by 6.6% in the last year, and those classed as 'Lone Parents' by 2.3%, the 'Sick /Disabled' group fell by 0.2%.

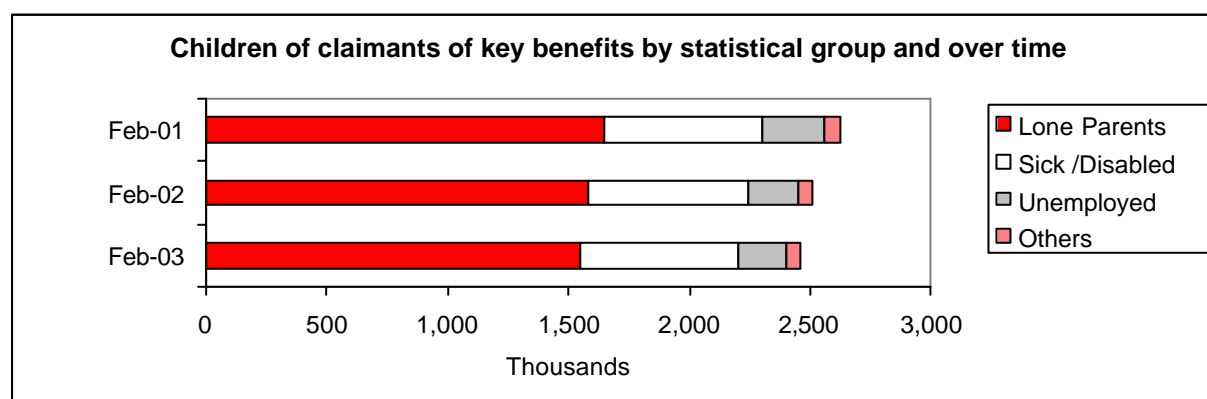


Table 2 Children and young adult dependants¹ of claimants of key benefits by statistical group of family & family type: February 2003

Thousands and percentages

	Children aged under 16 years					Young dependants aged 16 to 18 years				
	All	Family Type				All	Family Type			
		% pop aged under 16	Couple	Single	Not Known		% pop aged 16-18 ²	Couple	Single	Not known
All statistical groups	2,280	20	574	1,658	48	179	12	60	119	-
Unemployed	174	2	167	7	-	23	2	12	11	-
Sick /Disabled	581	5	357	176	48	76	5	42	34	-
Lone Parents	1,474	13	-	1,474	-	74	5	-	74	-
Others	51	-	50	1	-	6	-	6	-	-

Notes:

1. Children aged under 16 and young adults aged 16 to 18 for whom additional benefit allowance payable.
2. Population figures are based on 16 to 18 year olds in full time education (see definitions and conventions).

- The percentage of under-16s living in key benefit households was 20% at February 2003; this compared with 12% of those aged 16-18 in full time education.

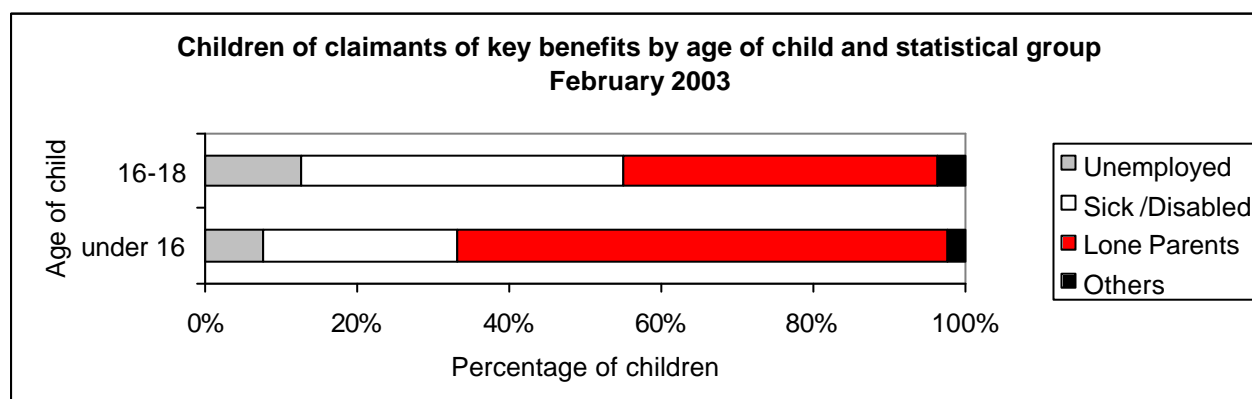


Table 3 Children and young adult dependants¹ of claimants of key benefits by family type: February 2001 to February 2003

	<i>Thousands and percentages</i>									
	Children aged under 16 years					Young dependants aged 16 to 18 years				
	All	% pop aged under 16	Family type			All	% pop aged 16-18 ²	Family Type		
Couple			Single	Not known	Couple			Single	Not Known	
Feb 2001	2,452	21	652	1,744	55	174	12	61	113	-
Feb 2002	2,339	20	600	1,690	49	173	12	60	114	-
Feb 2003	2,280	20	574	1,658	48	179	12	60	119	-

Notes:

1. Children aged under 16 and young adults aged 16 to 18 for whom additional benefit allowance payable
2. Population figures are based on 16 to 18 year olds in full time education (see definitions and conventions).

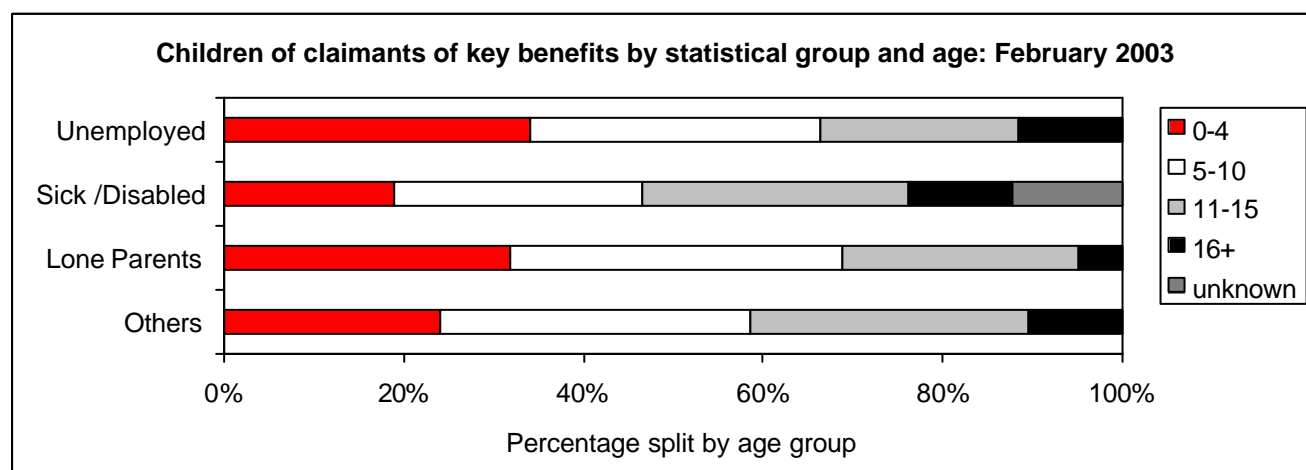
- Although the number of children less than 16 years old living in families where the benefit claimant was single, fell between February 2002 and February 2003 (as did the number where the claimant had a partner), a greater *proportion* of children (under 16) were living in families where the claimant was single (72.7% compared with 72.2% a year earlier), reflecting the faster falls in the married / cohabiting unit.
- For 16-18 year olds the *proportion* of children living in families where the claimant was single was 65.5% in February 2002. This increased to 66.6% in February 2003.

Table 4 Children and young adult dependants¹ of claimants of key benefits by statistical group of family and age of youngest child: February 2003

	<i>Thousands and percentages</i>											
	All children/deps	%	Under 5	%	5 to 11	%	11 to 16	%	16 or over	%	Not known	%
All statistical groups	2,458	100	698	28	840	34	661	27	179	7	81	3
Unemployed	197	100	67	34	64	32	43	22	23	12	-	-
Sick / Disabled	657	100	124	19	182	28	193	29	76	12	81	12
Lone Parents	1,548	100	493	32	574	37	407	26	74	5	-	-
Others	57	100	14	25	20	35	18	32	6	11	-	-

Notes:

1. Children aged under 16 and young adults aged 16 to 18 for whom additional benefit allowance payable (see definitions and conventions).



- Amongst the Sick / Disabled Group proportionally fewer children were under the age of five compared to other statistical groups. This reflects the older age profile of those claiming a sickness and/or disability benefit

These figures are not seasonally adjusted. Comparisons should be made 'year on year'.

(although many of this group's ages were unknown). The children of lone parents had the youngest profile, with 68.9% being aged under 11.

Table 5 Children and young adult dependants¹ of key benefits by statistical group of family and duration of claim: February 2003

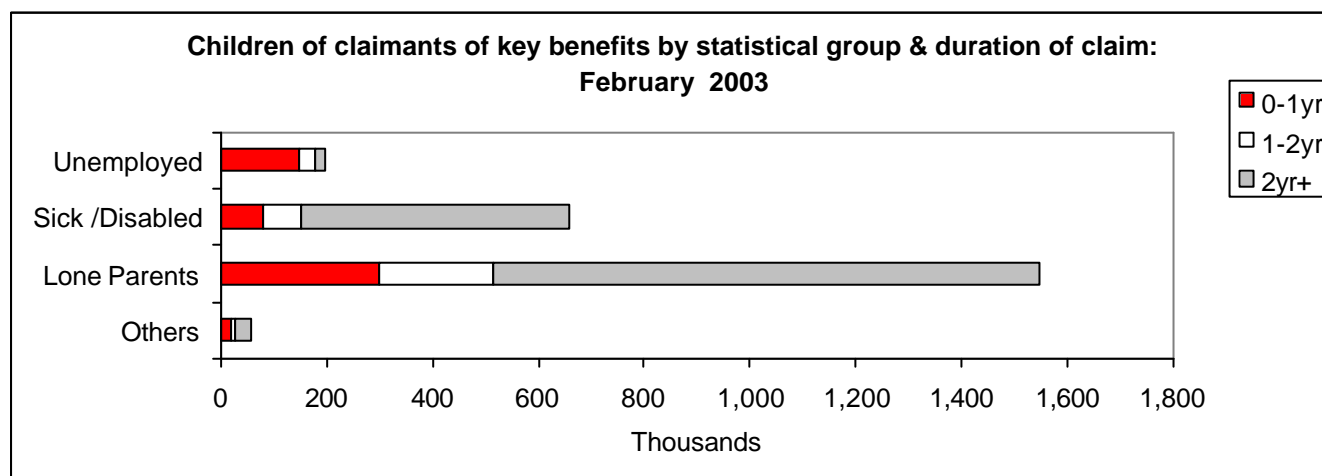
Thousands and percentages

	All durations	%	Duration of oldest claim ²									
			Under 3 months	%	3 to under 6 months	%	6 months to under 1 year	%	1 to under 2 years	%	2 years or over	%
All statistical groups	2,458	100	143	6	160	7	240	10	324	13	1,591	65
Unemployed	197	100	64	32	43	22	40	20	32	16	19	10
Sick /Disabled	657	100	13	2	25	4	42	6	70	11	506	77
Lone Parents	1,548	100	60	4	87	6	151	10	215	14	1,034	67
Others	57	100	6	11	6	11	7	12	7	12	32	56

Notes:

1. Children aged under 16 and young adults aged 16 to 18 for whom additional benefit allowance payable.
2. Oldest benefit payable during current spell of benefit receipt (see definitions and conventions).

- Of those children in families on a key benefit, 65% had been on benefit for at least two years (compared to 63% at February 2002). For the Sick & Disabled group the figure was 77%, while that for the unemployed was only 10%.
- Of those children in families classed as unemployed, 74% had been on benefit for less than a year.



These figures are not seasonally adjusted. Comparisons should be made 'year on year'.

Table 6: Children and young adult dependants¹ of claimants of key benefits by duration of claim: February 2001 to February 2003.

Thousands and percentages

	All durations	Duration of oldest claim ²				
		Under 3 months	3 to under 6 months	6 months to under 1 year	1 to under 2 years	2 years or over
February 2001	2,626	184	180	276	391	1,595
%	100	7	7	11	15	61
February 2002	2,513	156	153	248	362	1,593
%	100	6	6	10	14	63
February 2003	2,458	143	160	240	324	1,591
%	100	6	7	10	13	65

Notes:

1 *Children aged under 16 and young adults aged 16 to 18 for whom additional benefit allowance payable*

2 *Oldest benefit payable during current spell of benefit receipt (see definitions and conventions).*

- The percentage of children in families claiming benefit for at least two years was 65% in February 2003. This increased from 63% in February 2002. The percentage of children in families claiming benefit for under one year has remained fairly static February 2002 to February 2003

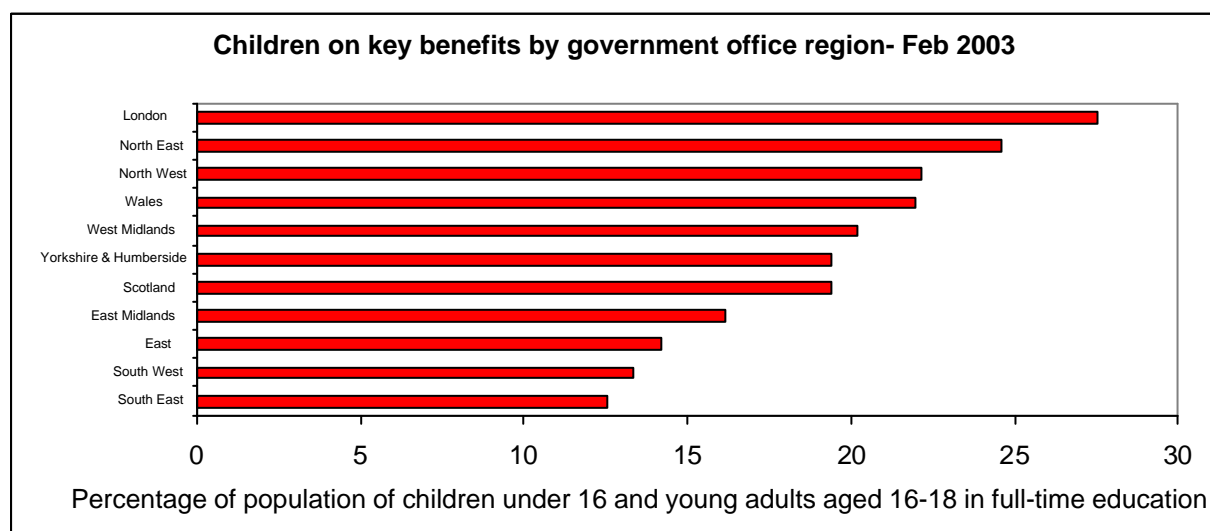
Table 7 Children and young adult dependants¹ of claimants of key benefits by Government Office Region: February 2003

	<i>Thousands and percentages</i>	
	'000s	% of pop ²
Great Britain	2,457	19
England	2,103	19
North East	138	25
North West	349	22
Yorkshire and the Humber	221	19
East Midlands	152	16
West Midlands	250	20
East	174	14
London	451	28
South East	226	13
South West	142	13
Wales	146	22
Scotland	209	19
SDA/IB claimants living abroad	1	.

Notes:

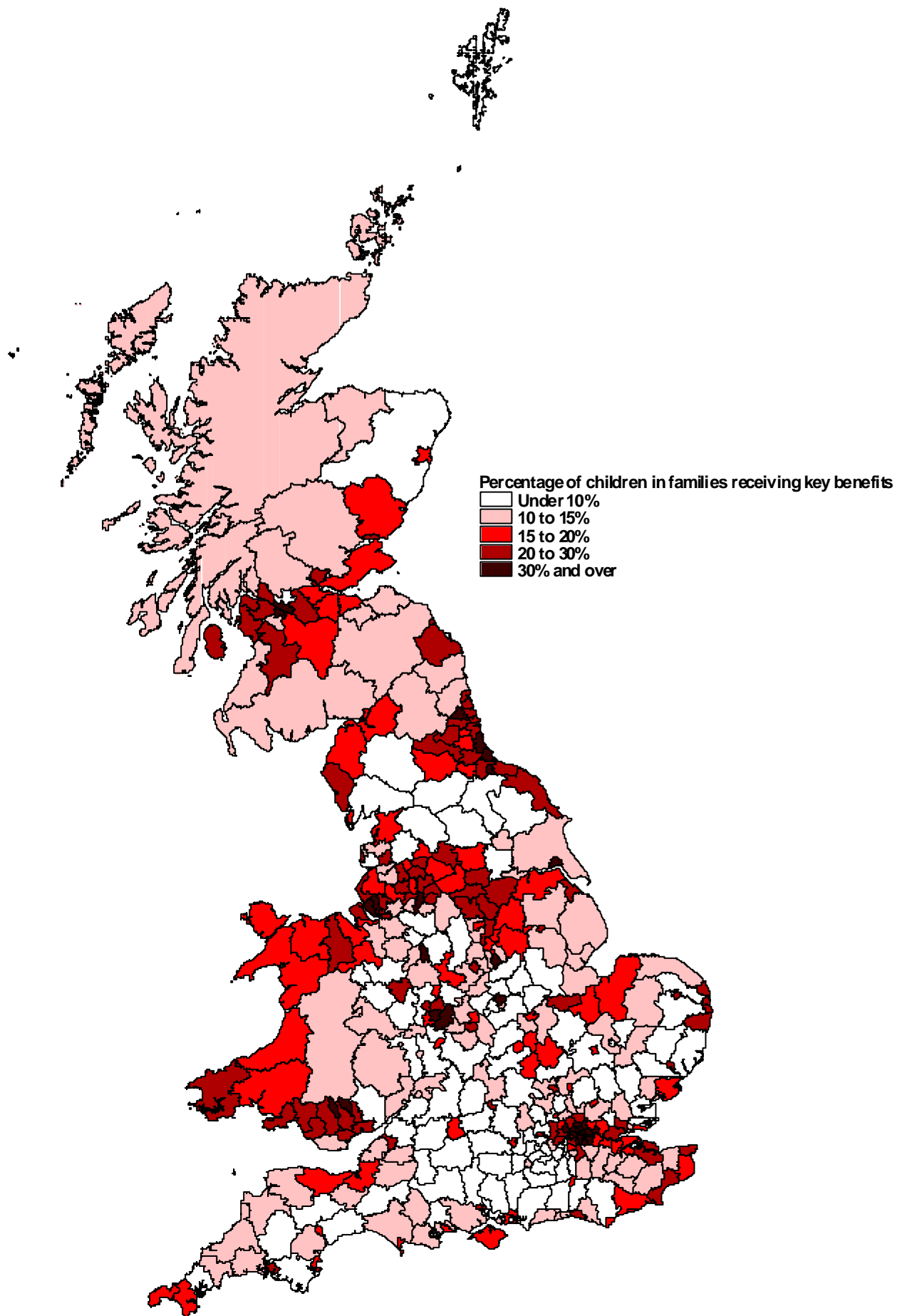
1. Children aged under 16 and young adults aged 16 to 18 for whom additional benefit allowance payable (see definitions and conventions).
2. Population aged under 16 plus population aged 16 to 18 in full-time education (from Child Benefit estimates).

- The percentage of children (aged under 16 or aged 16-18 and in full-time education) living in families claiming a key benefit varied from 28% in the London Government Office Region (GOR) down to 13% in the South East and South West GORs. All regions have areas with high and low proportion of children living in families on key benefits. For example, in the North East 10.4% of children in Castle Morpeth lived in families on key benefits compared to 33.5% of children in Easington.



Further regional benefit statistics can be accessed at the Neighbourhood Statistics Service web site at: <http://www.neighbourhood.statistics.gov.uk/home.asp>

Children of claimants of key benefits, as a percentage of population aged under 16 or aged 16-19 in full time education: February 2003



These figures are not seasonally adjusted. Comparisons should be made 'year on year'.

Table 8 Children and young adult dependants¹ of claimants of combinations of key benefits: February 2003

	<i>Thousands and percentages</i>	
	Number of children/deps	<i>% population²</i>
All combinations	2,458	19
IS only	1,639	13
JSA only	194	2
IS & IB	304	2
IS,IB & DLA ³	157	1
IB only	43	-
IB & DLA	36	-
IS & DLA	54	-
IS, DLA & SDA	22	-
IS & SDA	6	-
DLA & SDA	2	-
DLA & JSA	1	-
SDA only	1	-
Others ⁴	2	-

Notes:

- 1 *Children aged under 16 and young adults aged 16 to 18 for whom additional benefit allowance payable*
- 2 *Population aged under 16 plus population aged 16-18 in full-time education*
- 3 *No allowance payable for dependants of recipients of DLA only, therefore no such dependants included in figures*
- 4 *Due to slight differences in dates of benefit data extracts, includes anomalies such as IB with JSA (see definitions and conventions).*

- 67% of 'key benefit' children were in families claiming IS only, reflecting the fact that lone parents form the majority of families with children dependent on key benefits.

Families on Benefit

Table 9 Families¹ on key benefits by statistical group and duration of claim: February 2003

Thousands and percentages

	All durations	%	Duration of oldest claim ²									
			Under 3 months	%	3 to under 6 months	%	6 months to under 1 year	%	1 to under 2 years	%	2 years or over	%
All statistical groups	1,286	100	77	6	86	7	132	10	176	14	815	63
Unemployed	97	100	34	35	21	22	20	21	14	14	8	8
Sick / Disabled	349	100	7	2	13	4	22	6	36	10	271	78
Lone Parents	817	100	34	4	50	6	87	11	122	15	523	64
Others	24	100	3	13	2	8	3	13	3	13	13	54

Notes:

1. Claimants with children aged under 16 or young adult dependants aged 16 to 18 for whom additional benefit allowance payable
2. Oldest benefit payable during current spell of benefit receipt (see definitions and conventions).

- 63% of families on key benefits had been on benefit for at least two years. For the Sick / Disabled group the figure was 78% while that for the unemployed was 8%.
- 77% of families classed as unemployed had been on benefit for less than a year.

Table 10 Families¹ on key benefits by duration of claim: February 2001 to February 2003

Thousands and percentages

	All durations	Duration of oldest claim ²				
		Under 3 months	3 to under 6 months	6 months to under 1 year	1 to under 2 years	2 years or over
February 2001	1,372	99	98	148	208	819
%	100	7	7	11	15	60
February 2002	1,315	82	83	135	197	818
%	100	6	6	10	15	62
February 2003	1,286	77	86	132	176	815
%	100	6	7	10	14	63

Notes:

1. Claimants with children aged under 16 or young adult dependants aged 16 to 18 for whom additional benefit allowance payable (see definitions and conventions).
2. Oldest benefit payable during current spell of benefit receipt

- In the last two years the number of families on a benefit for at least two years increased from 60% in February 2001 to 63% in February 2003. In the same period the percentage of families on a benefit for under one year dropped from 25% to 23%.

Table 11 Families¹ on key benefits by statistical group and age of youngest child: February 2003

Thousands and percentages

	All ages		Age of youngest child								Not known	
	ages	%	Under 5	%	5-11	%	11-16	%	16+	%	known	%
All statistical groups	1,286	100	556	43	386	30	239	19	56	4	49	4
Unemployed	97	100	50	52	22	23	12	12	13	13	-	-
Sick / Disabled	349	100	97	28	87	25	82	23	34	10	49	14
Lone Parents	817	100	400	49	270	33	139	17	7	1	-	-
Others	24	100	10	42	7	29	5	21	2	8	-	-

Notes:

1. Claimants with children aged under 16 or young adults aged 16 to 18 for whom additional benefit allowance payable (see definitions and conventions).

- Of the youngest children of families on key benefits, 43% were under the age of five.
- For the Sick /Disabled the age profile of the youngest children was older (although many of this group's ages were unknown).

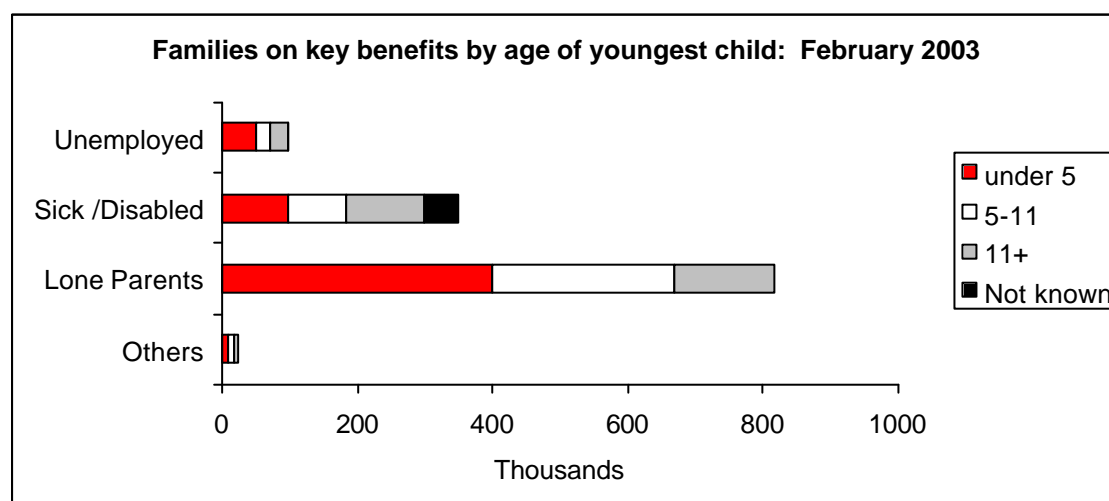


Table 12 Families¹ on key benefits with children and/or young adult dependants: February 2001 to February 2003

Thousands and percentages

	All families	Age of youngest child					Not known
		Under 5	5 to under 11	11 to under 16	16 or over		
February 2001	1,372	604	414	240	54	60	
%	100	44	30	17	4	4	
February 2002	1,315	572	398	237	54	54	
%	100	43	30	18	4	4	
February 2003	1,286	556	386	239	56	49	
%	100	43	30	19	4	4	

Notes:

1 Claimants with children aged under 16 or young adults aged 16 to 18 for whom additional benefit allowance payable (see definitions and conventions).

- Between February 2001 and February 2003 there has been a gradual shift in the age profile of the youngest child in families on key benefits, with the proportion of families with the youngest child under 11 slightly falling.

Table 13 Families¹ on key benefits by statistical group and number of children: February 2003

Thousands

	All families	Number of children			
		One	Two	Three	Four or more
All statistical groups	1,286	574	411	191	110
Unemployed	97	41	29	16	11
Sick / Disabled	349	166	105	48	31
Lone Parents	817	360	270	123	63
Others	24	8	7	5	5

Notes:

1 Claimants with children aged under 16 or young adults aged 16 to 18 for whom additional benefit allowance payable (see definitions and conventions).

- While 4.2% of families claiming Child Benefit had four or more children (February 2003), the figure was 8.5% for families on key benefits. For the unemployed the figure was higher: 11.4%.

Table 14 Children and young adult dependants¹ of claimants of key benefits and/or recipients of tax credits by statistical group of family: February 2001 to February 2003

	<i>Thousands and percentages</i>					
	Number of children/dependants ¹					
	Feb-01	%	Feb-02	%	Feb-03	%
All statistical groups	4,886	100	4,950	100	5,173	100
Unemployed	259	5	213	4	201	4
Sick / Disabled	667	14	669	14	673	13
Lone Parents	1,647	34	1,585	32	1,548	30
Others	65	1	59	1	57	1
Working Family	2,225	46	2,397	48	2,664	51
Working Disabled	22	-	27	1	30	1

Notes:

1. Children aged under 16 and young adult dependants aged 16 to 18 for whom additional benefit allowance payable (see definitions and conventions).

Table 15 Children and young adult dependants¹ of claimants of key benefits and/or recipients of tax credits by statistical group of family & family type: February 2003

	<i>Thousands and percentages</i>									
	Children aged under 16 years					Young dependants aged 16 to 18 years				
	All	Family Type				All	Family Type			
% pop aged under 16		Couple	Single	Not known	% pop aged 16-18 ²		Couple	Single	Not known	
All statistical groups	4,764	42	1,959	2,759	46	409	28	152	257	-
Unemployed	178	2	169	9	-	23	2	12	11	-
Sick / Disabled	595	5	365	183	46	78	5	43	35	-
Lone Parents	1,474	13	-	1,474	-	74	5	-	74	-
Others	51	-	50	1	-	6	-	6	-	-
Working Family	2,441	21	1,359	1,082	-	223	15	89	134	-
Working Disabled	26	-	16	10	-	4	-	2	2	-

Notes:

- 1 Children aged under 16 and young adults aged 16 to 18 for whom additional benefit allowance payable (see definitions and conventions).
- 2 Population figures based on 16 to 18 year olds in full time education and for whom Child Benefit is payable

Table 16 Children and young adult dependants¹ of claimants of key benefits and/or recipients of tax credits by statistical group of family and age of child: February 2003

Thousands and percentages

	Number of children/dependants ¹											
	All ages		Under 5		5 to under 11		11 to under 16		16 or over		Not known	
		%		%		%		%		%		%
All statistical groups	5,173	100	1,427	28	1,811	35	1,446	28	409	8	79	2
Unemployed	201	100	68	34	65	32	44	22	23	11	-	-
Sick / Disabled	673	100	128	19	188	28	199	30	78	12	79	12
Lone Parents	1,548	100	493	32	574	37	407	26	74	5	-	-
Others	57	100	14	25	20	35	18	32	6	11	-	-
Working Family	2,664	100	719	27	955	36	767	29	223	8	-	-
Working Disabled	30	100	5	17	10	33	10	33	4	13	-	-

Notes:

1 Children aged under 16 and young adult dependants aged 16 to 18 for whom additional benefit allowance payable (see definitions and conventions).

Table 17 Children and young adult dependants¹ of claimants of key benefits and/or recipients of tax credits by statistical group of family and duration of claim: February 2003

Thousands and percentages

	Duration of oldest claim ²											
	All durations		Under 3 months		3 to under 6 months		6 months to under 1 year		1 to under 2 years		2 years or over	
		%		%		%		%		%		%
All statistical groups	5,173	100	295	6	504	10	777	15	973	19	2,624	51
Unemployed	201	100	44	22	43	21	49	24	39	19	26	13
Sick / Disabled	673	100	11	2	24	4	47	7	75	11	516	77
Lone Parents	1,548	100	50	3	85	5	155	10	220	14	1,037	67
Others	57	100	4	7	5	9	8	14	8	14	32	56
Working Family	2,664	100	186	7	345	13	516	19	626	23	991	37
Working Disabled	30	100	1	3	1	3	2	7	5	17	20	67

Notes:

1 Children aged under 16 and young adults aged 16 to 18 for whom additional benefit payable (see definitions and conventions).

2 Oldest benefit payable during current spell of benefit receipt

Table 18 Families¹ on key benefits and/or recipients of tax credits by statistical group of family and duration: February 2003

Thousands and percentages

	All durations	%	Duration of oldest claim ²									
			Under 3 months		3 to under 6 months		6 months to under 1 year		1 to under 2 years		2 years or over	
				%		%		%		%		%
All statistical groups	2,695	100	164	6	274	10	413	15	506	19	1,337	50
Unemployed	99	100	24	24	22	22	24	24	17	17	12	12
Sick / Disabled	357	100	6	2	12	3	24	7	39	11	276	77
Lone Parents	817	100	28	3	49	6	90	11	125	15	525	64
Others	24	100	2	8	2	8	3	13	4	17	13	54
Working Family	1,381	100	104	8	188	14	270	20	319	23	500	36
Working Disabled	17	100	-	-	1	6	1	6	3	18	11	65

Notes:

- 1 Claimants with children aged under 16 or young adults aged 16 to 18 for whom additional benefit allowance payable (see definitions and conventions).
- 2 Oldest benefit payable during current spell of benefit receipt.

Table 19 Families¹ on key benefits and/or recipients of tax credits by statistical group of family and age of youngest child: February 2003

Thousands and percentages

	All ages	%	Age of youngest child									
			Under 5		5-11		11-16		16+		Not known	
				%		%		%		%		%
All statistical groups	2,695	100	1,139	42	858	32	523	19	127	5	48	2
Unemployed	99	100	51	52	22	22	13	13	13	13	-	-
Sick / Disabled	357	100	100	28	90	25	84	24	35	10	48	13
Lone Parents	817	100	400	49	270	33	139	17	7	1	-	-
Others	24	100	10	42	7	29	5	21	2	8	-	-
Working Family	1,381	100	573	41	463	34	276	20	68	5	-	-
Working Disabled	17	100	4	24	4	24	5	29	2	12	-	-

Notes:

1. Claimants with children aged under 16 or young adults aged 16 to 18 for whom additional benefit allowance payable (see definitions and conventions).

Table 20 Families¹ on key benefits and/or recipients of tax credits by statistical group and number of children: February 2003

<i>Thousands</i>					
	All families	Number of children			
		One	Two	Three	Four or more
All statistical groups	2,695	1,131	940	418	206
Unemployed	99	42	30	16	11
Sick / Disabled	357	169	108	49	31
Lone Parents	817	360	270	123	63
Others	24	8	7	5	5
Working Family	1,381	545	519	223	94
Working Disabled	17	7	6	2	1

Notes:

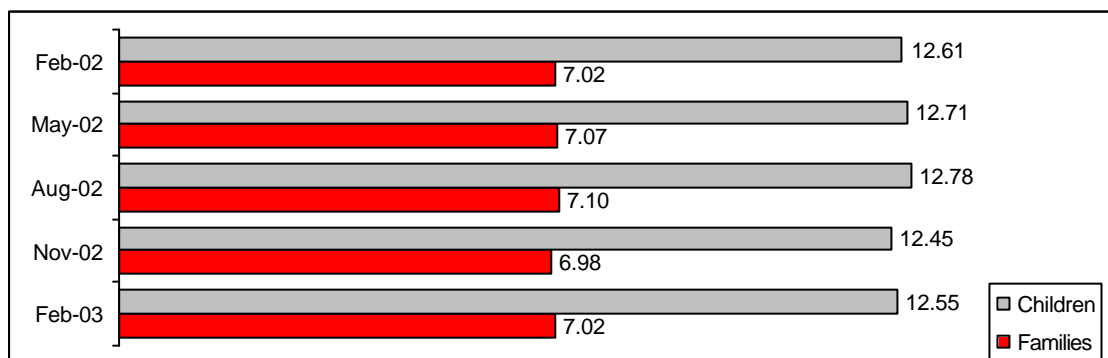
1. *Claimants with children under 16 or young adults aged 16 to 18 for whom additional benefit allowance payable (see definitions and conventions).*

Appendices

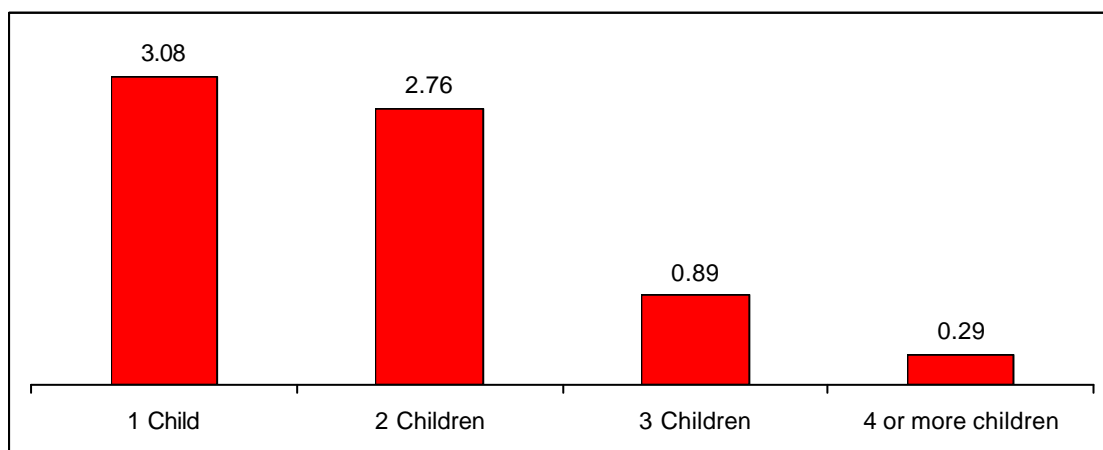
Appendix 1 – Child Benefit

- At the end of February 2003 there were around 7.02 million families receiving a payment of Child Benefit and 12.55 million children for whom a payment of Child Benefit was being made. The number of children has decreased but families remain the same compared to the same point a year earlier.
- Within academic years, the caseload rises as new births outstrip those 16-18 year olds leaving full-time education - up to A-level or NVQ level 3 standard - and so no longer being eligible for Child Benefit. At the end of each academic year (early September, officially), the volume of 16-18 year olds leaving full-time education is at its greatest, outstripping new births, and the Child Benefit caseload falls again.

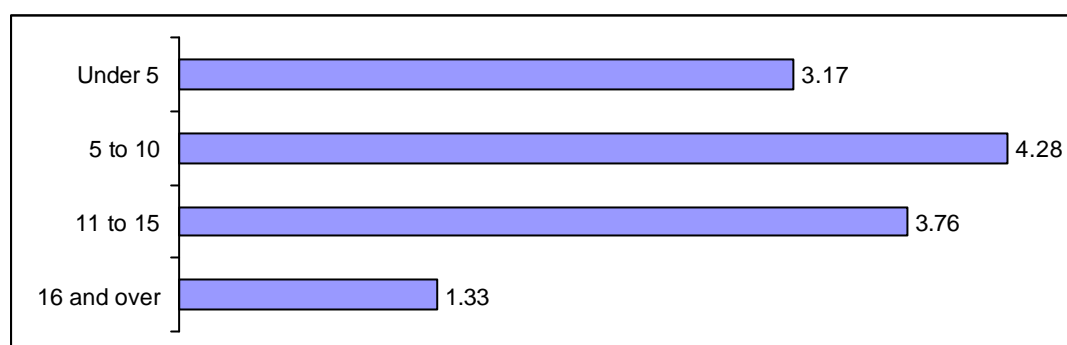
Child Benefit caseload: Families and children (millions), February 2003



Child Benefit families by number of children, February 2003 (millions)



Child Benefit caseload by age of children, February 2003 (millions)

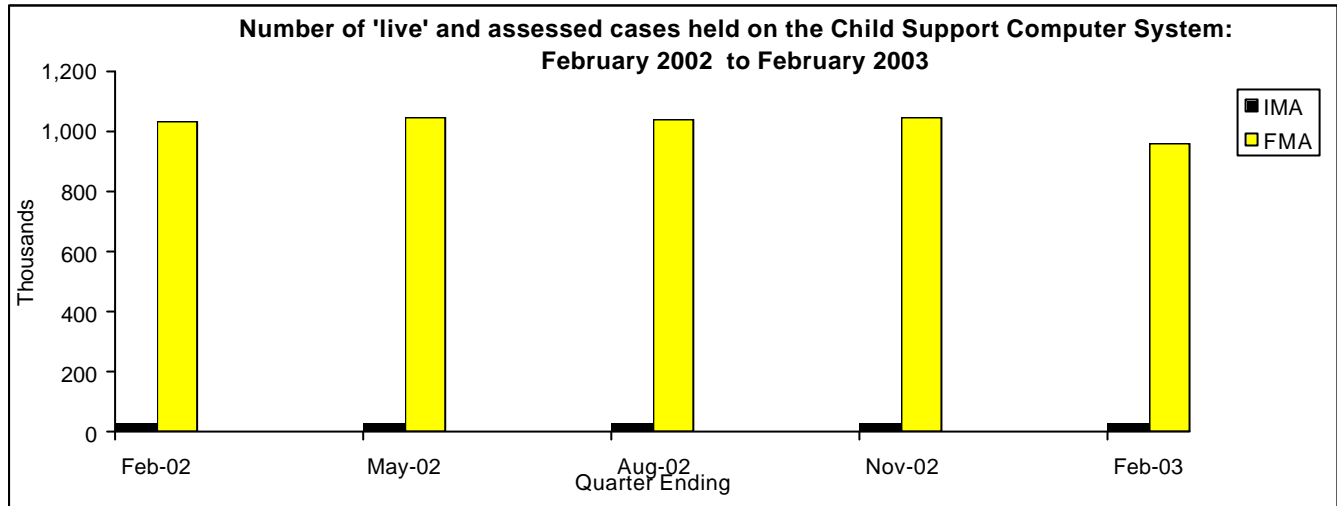


Child Benefit rates

	<i>£ per week</i>		
	Eldest qualifying child of a couple	Eldest qualifying child of a lone parent	Each other child
Apr-92	9.65	15.50	7.80
Apr-93	10.00	16.05	8.10
Apr-94	10.20	16.35	8.25
Apr-95	10.40	16.70	8.45
Apr-96	10.80	17.10	8.80
Apr-97	11.05	17.10	9.00
Apr-98	11.45	17.10	9.30
Apr-99	14.40	17.10	9.60
Apr-00	15.00	17.55	10.00
Apr-01	15.50	17.55	10.35
Apr-02	15.75	17.55	10.55
Apr-03	16.05	17.55	10.75

Appendix 2 – Child Support Agency

At the end of February 2003 there were 957.4 thousand 'live' and fully assessed cases held on the Child Support Computer System (CSCS), a fall from 1,048.3 thousand cases in November 2002. This drop in the caseload can be attributed to the closure of a large number of suspended cases in February 2003.



- The average weekly maintenance assessment for all 'live' fully assessed cases fell from £20.87 to £20.81 during the period February 2002 to February 2003. Non Resident Parents with regular income working as an employee had an average weekly full maintenance assessment of £39.25 at the end of February 2003, compared with £23.02 for the self-employed. However, the NRP benefit/employment status used to produce these figures may not fully reflect the current position.

Table 1 Number of NRPs with a full maintenance assessment and average value of assessment: February 2002 to February 2003

	<i>NRPs with a full maintenance assessment</i>	
	FMA (thousands)	Average £ pw
February 2002	1,031.8	£20.87
May 2002	1,045.7	£21.10
August 2002	1,041.1	£21.16
November 2002	1,048.3	£21.17
February 2003	957.4	£20.81

- Parents with Care are assigned to a benefit status according to the following order of priority: receiving Working Families' Tax Credit (WFTC), receiving income-based Jobseeker's Allowance (JSA(IB)), receiving Income Support (IS), and 'Other' (i.e. cases not covered earlier in the list whose income is from other sources, such as pensions, investments, irregular and regular employment income, and other benefits).

Table 2 Benefit Status of PWC, February 2002 – February 2003: full assessments

Thousands and percentages

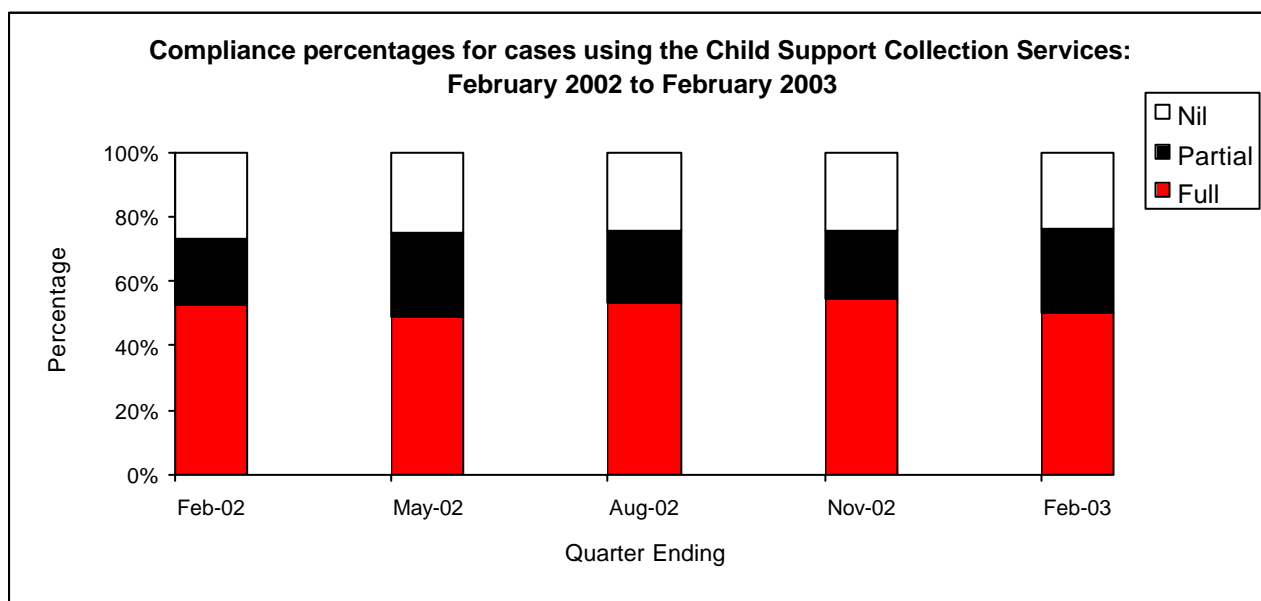
	Total	PWC Benefit Status							
		Income Support		JSA (IB)		WFTC		Other	
			%		%		%		%
February 2002	1,031.8	383.0	37.1	9.2	0.9	261.8	25.4	377.8	36.6
May 2002	1,045.7	386.5	37.0	8.7	0.8	262.3	25.1	388.2	37.1
August 2002	1,041.1	387.2	37.2	8.2	0.8	274.6	26.4	371.2	35.7
November 2002	1,048.3	379.3	36.2	7.9	0.8	273.6	26.1	387.5	37.0
February 2003	957.4	355.6	37.1	6.9	0.7	278.4	29.1	316.4	33.0

- In the following table, the 'Not Applicable' category includes those cases where payment is not via the collection service, or where the NRP was not charged anything during the quarter.

Table 3 Compliance levels for 'live and fully assessed' cases, February 2002 to February 2003 caseload

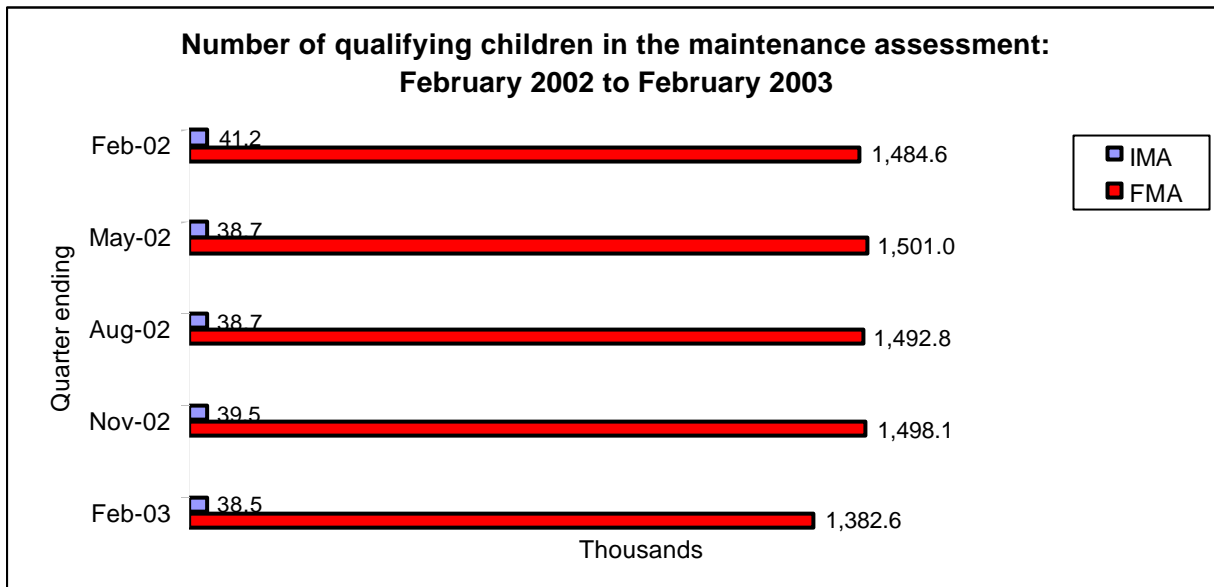
Thousands

	Total	Not Applicable	Full	Partial	Nil
February 2002	1,031.8	663.9	193.1	76.3	98.5
May 2002	1,045.7	674.4	181.5	97.4	92.4
August 2002	1,041.1	667.8	197.7	85.1	90.4
November 2002	1,048.3	671.4	204.2	81.4	91.3
February 2003	957.4	584.8	185.9	96.7	90.0



These figures are not seasonally adjusted. Comparisons should be made 'year on year'.

- The number of qualifying children in the fully assessed caseload has decreased by 6.9% overall since February 2002 with a 7.7% fall in the last quarter. This fall can be linked to the decrease in the overall caseload in the last quarter.



These figures are not seasonally adjusted. Comparisons should be made 'year on year'.

Appendix 3 – Maternity Allowance

At the end of February 2003 there were 15.2 thousand spells of Maternity Allowance in payment, 5.8% up on two years earlier, and reflecting the increase in the number of new spells.



Maternity Allowance rates

	Higher rate ¹	Lower rate	<i>£ per week</i> Increase for dependants
Apr-92	.	42.25	25.50
Apr-93	.	43.75	26.40
Apr-94	.	44.55	26.90
Oct-94	52.50	44.55	26.90
Apr-95	52.50	45.55	27.50
Apr-96	54.55	47.35	28.55
Apr-97	55.70	48.35	29.15
Apr-98	57.70	50.10	30.20
Apr-99	59.55	51.70	31.15
Apr-00	60.20	52.25	31.50
Apr-01 ²	62.20 ²	.	32.55
Apr-02 ²	75.00	.	33.10
Apr-03 ²	75.00	.	33.65

Notes:

1. The woman must be an employee in the 15th week before the baby is expected (the 'qualifying week').
2. In April 2001 the higher and lower rates of maternity allowance were abolished and replaced by a standard rate.

Methodology

A full description of the methodology used to produce these analyses and the possible uses that can be made of the data is available from the contact point listed earlier in this publication.

Summary of methodology

These analyses have been constructed by matching 5% samples for the individual benefits/tax credits that they cover. People in these individual samples are selected using the last two digits of the national insurance number (NINO). This sampling scheme ensures that the same set of people will be selected for each individual benefit/tax credit and time period for which they have a live claim or award.

To produce the client group analyses, a common 'snapshot' date is chosen and the NINOs for each person claiming a benefit or receiving a tax credit on this date are selected. The NINOs are then matched to produce an overall data set for those who are claiming at least one benefit or receiving a tax credit on the snapshot date. The individual data items used for the various analyses (e.g. age, sex, number of children for which additional benefit payable) are then taken from the source data sets and additional variables are then derived (e.g. statistical group, family type).

This methodology gives a 'best estimate' of the overall number of claimants of benefits and recipients of tax credits. However, there are some minor limitations, e.g. the sample of JSA claimants is taken about two weeks before the snapshot date. The best estimates for the numbers claiming each benefit are still given by the individual samples from which the data are drawn. These are published by DWP Information and Analysis Directorate and tax credit statistics are published by Inland Revenue Analysis and Research Services.

Children and Families

These analyses are based on children in families where the claimant receives an additional allowance of benefit for children or young adult dependants (i.e. those aged 16-18 and still in full-time education); AND those children in families in receipt of contribution-based JSA or JSA National Insurance credits only, with children or young adult dependants recorded in the assessment. Additional amounts are payable for all dependant children in families receiving income related benefits (i.e. Income Support or Jobseeker's Allowance (Income Based)) or tax credits. The main gaps are children of claimants of Incapacity Benefit and Severe Disablement Allowance, for whom children information is incomplete; and children of claimants of Disability Living Allowance, for whom no children information is recorded.

Family type

The 'family type' analyses (i.e. single, couple, not known) in tables 2, 3 and 15 are based primarily on claimants who receive additional amounts of benefit or tax credit for their partner. These amounts are payable for all partners of claimants of income related benefits or recipients of tax credits, which are received by the majority of people covered by these analyses. The main gap comes from claimants of IB/SDA where additional benefit is payable only to those who have a partner who is not working and is looking after children. Most IB/SDA claimants do not qualify for these allowances, though the DWP Family Resources Survey (FRS) suggests that about half have a partner.

This table explains the definitions used in the 'family type' tables:

Family type	Definition
Couple	People who receive an additional allowance of benefit or tax credit for their partner; or those in receipt of contribution-based JSA or JSA national insurance credits only, with a partner recorded.
Single	People who have their status recorded as single and therefore do not receive an additional allowance of benefit or tax credit for a partner.
Not known	People who do not have a marital status recorded and are not receiving an additional allowance of benefit or tax credit for a partner. These are mainly IB/SDA claimants and include a small number who receive allowances for dependants but not partners.

Clerical cases

Some of the claims to each of the key benefits featured in this bulletin are not administered using the relevant DWP computer system. These claims are administered clerically and make up a very small proportion of people of working age who claim a key benefit. Therefore most clerical cases have been excluded, except Income Support claims where clerical cases are included.

Sampling error

The analyses in this report are subject to 'sampling error', i.e. by chance the number of cases in the sample with certain characteristics (e.g. "with children") may produce rated up estimates for the population which are slightly lower or slightly higher than the true population value. An indication of the effect of these sampling errors can be gained from the table of 'confidence intervals' below. Each figure shown in the tables in this report is a best estimate based on the sample data. The true number will most probably lie somewhere in a range around this estimate. The size of this range is usually indicated by a '95% confidence interval'. There is only a 1 in 20 chance that the true value lies outside of this range. Usually this interval is approximately symmetric so, for example, an estimate of 10,000 is really showing that the true value probably lies in the range 9,100 to 10,900.

Approximate 95% confidence intervals for a sample based on 1 in every 20 cases in the population are shown below for estimates of 1,000 or more.

Estimated value	95% confidence interval (+ or -)	Confidence interval as % of estimate (+ or -)
1,000	270	27
2,000	382	19
3,000	468	16
4,000	540	14
5,000	604	12
6,000	662	11
7,000	715	10
8,000	764	10
9,000	811	9
10,000	854	9
20,000	1,208	6
30,000	1,480	5
40,000	1,709	4
50,000	1,910	4
100,000	2,702	3
200,000	3,821	2
300,000	4,679	2
400,000	5,403	1
500,000	6,041	1
600,000	6,618	1
700,000	7,148	1
800,000	7,641	1
900,000	8,105	1
1,000,000	8,543	1

The above method applies only to estimates of numbers of people and not to other characteristics (such as percentages).

