

# **Client Group Analysis**

## **Quarterly bulletin on families with children on key benefits**

**November 2002**

---

## Contents

Definitions and conventions.....	1
Main Findings.....	1
Tables and charts.....	2
<i>Children on Benefit</i> .....	2
Table 1 Children and young adult dependants of claimants of key benefits by statistical group: November 2000 to November 2002.....	2
Table 2 Children and young adult dependants of claimants of key benefits by statistical group of family & family type: November 2002.....	3
Table 3 Children and young adult dependants of claimants of key benefits by family type: November 2000 to November 2002.....	4
Table 4 Children and young adult dependants of claimants of key benefits by statistical group of family and age of youngest child: November 2002.....	4
Table 5 Children and young adult dependants of key benefits by statistical group of family and duration of claim: November 2002.....	5
Table 6: Children and young adult dependants of claimants of key benefits by duration of claim: November 2000 to November 2002.....	6
Table 7 Children and young adult dependants of claimants of key benefits by Government Office Region: November 2002.....	7
Table 8 Children and young adult dependants of claimants of combinations of key benefits:                 November 2002.....	9
<i>Families on Benefit</i> .....	10
Table 9 Families on key benefits by statistical group and duration of claim: November 2002.....	10
Table 10 Families on key benefits by duration of claim: November 2000 to November 2002.....	10
Table 11 Families on key benefits by statistical group and age of youngest child: November 2002.....	11
Table 12 Families on key benefits with children and/or young adult dependants: November 2000 to November 2002.....	12
Table 13 Families on key benefits by statistical group and number of children: November 2002.....	12
<i>Children and Families claiming benefit and/or receiving tax credits</i> .....	13
Table 14 Children and young adult dependants of claimants of key benefits and/or recipients of tax credits by statistical group of family: November 2000 to November 2002.....	14
Table 15 Children and young adult dependants of claimants of key benefits and/or recipients of tax credits by statistical group of family & family type: November 2002.....	14

Table 16 Children and young adult dependants of claimants of key benefits and/or recipients of tax credits by statistical group of family and age of child: November 2002.....	15
Table 17 Children and young adult dependants of claimants of key benefits and/or recipients of tax credits by statistical group of family and duration of claim: November 2002.....	15
Table 18 Families on key benefits and/or recipients of tax credits by statistical group of family and duration: November 2002 .....	16
Table 19 Families on key benefits and/or recipients of tax credits by statistical group of family and age of youngest child: November 2002 .....	16
Table 20 Families on key benefits and/or recipients of tax credits by statistical group and number of children: November 2002 .....	17
Appendices .....	18
<i>Appendix 1 – Child Benefit.....</i>	<i>18</i>
Child Benefit caseload: Families and children , November 2002.....	18
Child Benefit families by number of children, November 2002 .....	18
Child Benefit caseload by age of children, November 2002.....	19
<i>Appendix 2 – Child Support Agency.....</i>	<i>20</i>
Table 1 Number of NRPs with a full maintenance assessment and average value of assessment: November 2001 to November 2002.....	20
Table 2 Benefit Status of PWC, November 2001 – November 2002: full assessments .....	21
Table 3 Compliance levels for 'live and fully assessed' cases, November 2001 to November 2002.....	21
<i>Appendix 3 – Maternity Allowance.....</i>	<i>23</i>
Methodology.....	24

**Contact point for enquiries:**

Mr Paul McReady  
Information and Analysis Directorate (IAD)  
Information Centre Analysis Team (ICAT)  
Room BP5201, Dunstanburgh House  
Longbenton  
Newcastle-upon-Tyne  
NE98 1YX

Telephone: 0191-225-5550  
(GTN 522 55550)

Fax: 0191-225-3193  
(GTN 522 53193)

e-mail: [paul.mcready@dwp.gsi.gov.uk](mailto:paul.mcready@dwp.gsi.gov.uk)

## Definitions and conventions

### Children

The 'children' analyses are based on children in families where the claimant receives an additional allowance of benefit for children or young adult dependants (i.e. those aged 16-18 and still in full-time education); AND those children in families in receipt of contribution-based JSA or JSA National Insurance credits only, with children or young adult dependants recorded in the assessment. Additional amounts are payable for all dependant children in families receiving income related benefits (i.e. Income Support or Jobseeker's Allowance (Income Based)) or tax credits. The main gaps are children of claimants of Incapacity Benefit and Severe Disablement Allowance, for whom children information is incomplete; and children of claimants of Disability Living Allowance, for whom no children information is recorded.

### Families

The 'family' tables in this publication are based on family units including children as defined above (e.g. a couple with children, a lone parent with children) and claiming a key benefit/ tax credit.

### Key Benefits

Jobseeker's Allowance (JSA)  
Incapacity Benefit (IB)  
Severe Disablement Allowance (SDA)  
Disability Living Allowance (DLA)  
Income Support (IS)

### Other Benefits

Child Benefit, Maternity Allowance and the Child Support Agency are not included in the main tables. However, information is included in Appendices 1 to 3.

### Tax Credits

Working Families' Tax Credit (WFTC)  
Disabled Person's Tax Credit (DPTC)

### Symbols and conventions

Working age is: 16 to 64 years for men and 16 to 59 years for women  
Population estimates for children aged 0-15 are mid-year from 1999, 2000 and 2001.  
Population figures for young adult dependants are derived from Child Benefit data

"-" less than 500  
"." not applicable  
".. " not available

### Statistical group

Claimants and their families have been allocated to statistical groups to give an indication of the main reason why they are claiming benefit. This is only one of the possible ways in which claimants could be classified and alternative classifications are possible.

Families are assigned to statistical group according to the following hierarchy:

<i>If claimant receives</i>	JSA (including credits)	<i>then family assigned to:</i>	Unemployed
<i>Otherwise, if claimant receives</i>	IB (including credits)	" "	Sick / Disabled
" "	SDA	" "	Sick / Disabled
" "	IS, with disability premium	" "	Sick / Disabled
" "	IS, single	" "	Lone Parents
" "	IS	" "	Others

For example, if a claimant who is single receives IS but no disability premium then the family is assigned to 'Lone Parents'; but they also receive the disability premium then the family is assigned to 'Sick / Disabled'.

## Main Findings

- At November 2002, 2.5 million children were living in families claiming a key benefit and receiving additional benefit for them (the term 'children' refers collectively to children aged 0-15 and young adult dependants aged 16-18 in full-time education). This figure is down 2.4% from last year. While numbers classed as 'Unemployed' fell by 7.2% over this period, and those classed as 'Lone Parents' by 2.2% the Sick / Disabled fell by 1.4% (Table 1).
- Although the number of children less than 16 years old, living in families where the benefit claimant was single, fell from the previous year (as did the number where the claimant had a partner), a greater *proportion* of children (under 16) were living in families where the claimant was single (73.1% compared with 72.5% a year ago) (Table 3).
- Amongst the Sick /Disabled Group proportionally fewer children were under the age of five compared to other statistical groups. This reflects the older age profile of those claiming a sickness and/or disability benefit (although some of this group's ages were unknown) (Table 4)
- Of those children in families on a key benefit, 64% had been on benefit for at least two years. This increased from 63% in November 2001. For the Sick /Disabled group the figure was higher: 77% (Table 5) at November 2002 compared to 75% at November 2001.
- The percentage of children (aged under 16 or aged 16-18 and in full-time education) living in families claiming a key benefit varied from 28% in the London Government Office Region (GOR) down to 12% in the South East GOR (Table 7), showing a variation between local authorities in regions.
- 67% of 'key benefit' children were in families that were claiming IS only (Table 8).
- While 4.2% of families claiming child benefit had four or more children (November 2002), the figure was 8.4% for families on key benefits. For the Unemployed statistical group the figure was higher: 11.9% (Table 13).

## Tables and charts

### Children on Benefit

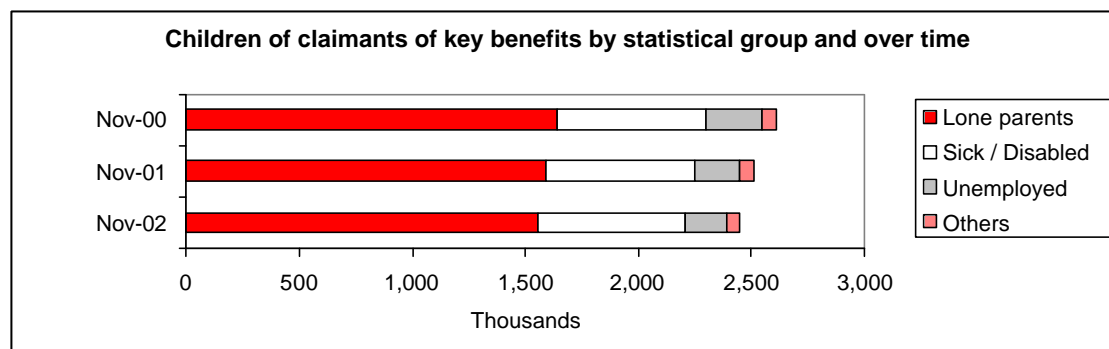
**Table 1 Children and young adult dependants of claimants of key benefits by statistical group: November 2000 to November 2002**

	<i>Thousands and percentages</i>					
	November-00		November-01		November-02	
	Number of children/dependants <sup>1</sup>					
		%		%		%
<b>All statistical groups</b>	<b>2,613</b>	<b>100</b>	<b>2,512</b>	<b>100</b>	<b>2,450</b>	<b>100</b>
Unemployed	250	10	200	8	185	8
Sick /Disabled	654	25	658	26	649	26
Lone Parents	1,643	63	1,593	63	1,557	64
Others	66	3	61	2	59	2

*Notes:*

1 Children aged under 16 and young adults aged 16 to 18 for whom additional benefit allowance payable (see definitions and conventions).

- At November 2002, 2.5 million children (19.0% of the total population of children aged under 16 and young adults aged 16 to 18 in full-time education), were living in families claiming a key benefit and receiving additional amounts of benefit for them. This represents a fall of 2.4% from the previous year.
- While numbers classed as 'Unemployed' fell by 7.2% in the last year, and those classed as 'Lone Parents' by 2.2%, the 'Sick /Disabled' group fell by 1.4%.



These figures are not seasonally adjusted. Comparisons should be made 'year on year'.

**Table 2 Children and young adult dependants<sup>1</sup> of claimants of key benefits by statistical group of family & family type: November 2002**

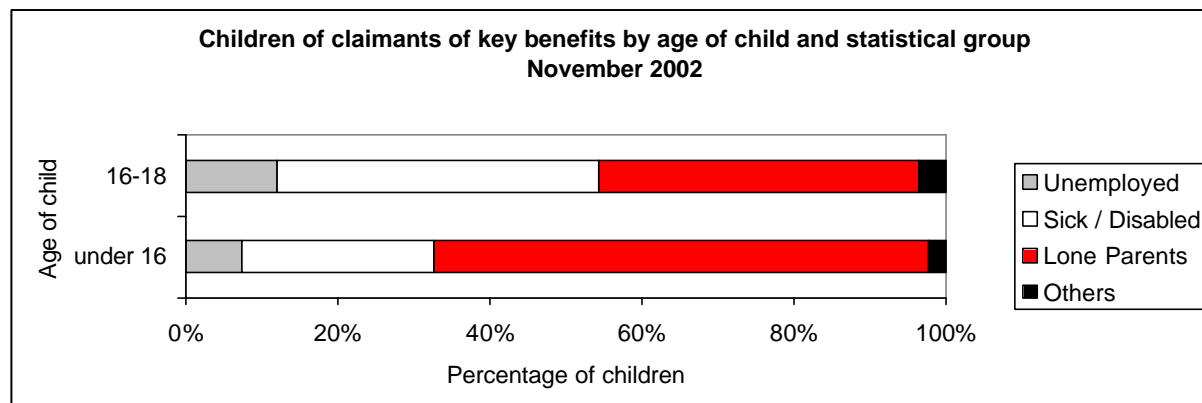
*Thousands and percentages*

	Children aged under 16 years					Young dependants aged 16 to 18 years				
	All	Family Type				All	Family Type			
		% pop aged under 16	Couple	Single	Not Known		% pop aged 16-18 <sup>2</sup>	Couple	Single	Not known
<b>All statistical groups</b>	<b>2,279</b>	<b>20</b>	<b>566</b>	<b>1,666</b>	<b>47</b>	<b>172</b>	<b>12</b>	<b>57</b>	<b>115</b>	<b>-</b>
Unemployed	165	1	158	6	-	21	1	11	10	-
Sick /Disabled	576	5	356	174	47	73	5	41	32	-
Lone Parents	1,485	13	-	1,485	-	72	5	-	72	-
Others	53	-	52	1	-	6	-	6	-	-

*Notes:*

1. Children aged under 16 and young adults aged 16 to 18 for whom additional benefit allowance payable.
2. Population figures are based on 16 to 18 year olds in full time education (see definitions and conventions).

- The percentage of under-16s living in key benefit households was 20% at Nov 2002; this compared with 12% for those aged 16-18 in full time education.



These figures are not seasonally adjusted. Comparisons should be made 'year on year'.

**Table 3 Children and young adult dependants<sup>1</sup> of claimants of key benefits by family type: November 2000 to November 2002**

	<i>Thousands and percentages</i>									
	Children aged under 16 years					Young dependants aged 16 to 18 years				
	All	% pop aged under 16	Family type			All	% pop aged 16-18 <sup>2</sup>	Family Type		
Couple			Single	Not known	Couple			Single	Not Known	
Nov 2000	<b>2,446</b>	21	645	1,745	55	<b>167</b>	12	59	108	-
Nov 2001	<b>2,343</b>	20	595	1,699	50	<b>169</b>	12	58	110	-
Nov 2002	<b>2,279</b>	20	566	1,666	47	<b>172</b>	12	57	115	-

Notes:

1. Children aged under 16 and young adults aged 16 to 18 for whom additional benefit allowance payable
2. Population figures are based on 16 to 18 year olds in full time education (see definitions and conventions).

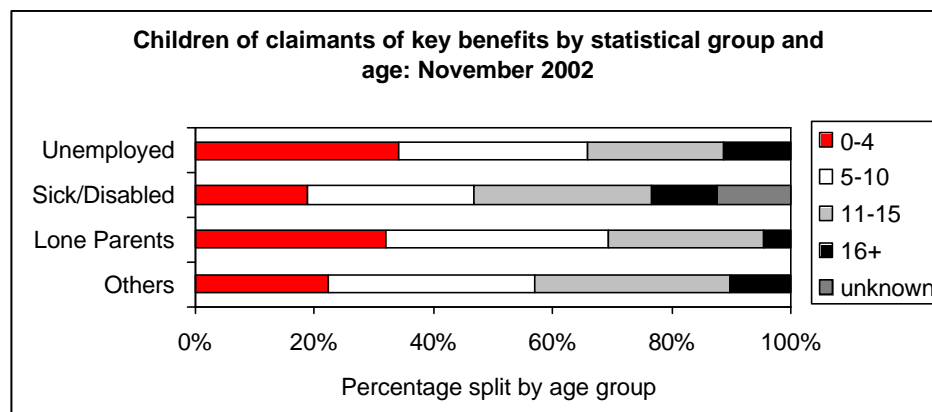
- Although the number of children less than 16 years old living in families where the benefit claimant was single, fell between November 2001 and November 2002 (as did the number where the claimant had a partner), a greater *proportion* of children (under 16) were living in families where the claimant was single (73.1% compared with 72.5% a year earlier), reflecting the faster falls in the married / cohabiting unit.
- For 16-18 year olds the *proportion* of children living in families where the claimant was single was 65.4% in November 2001. This increased to 66.8% in November 2002.

**Table 4 Children and young adult dependants<sup>1</sup> of claimants of key benefits by statistical group of family and age of youngest child: November 2002**

	<i>Thousands and percentages</i>											
	All children /deps	%	Under 5	%	5 to under 11	%	11 to under 16	%	16 or over	%	Not known	%
<b>All statistical groups</b>	<b>2,450</b>	<b>100</b>	<b>698</b>	<b>28</b>	<b>841</b>	<b>34</b>	<b>659</b>	<b>27</b>	<b>172</b>	<b>7</b>	<b>80</b>	<b>3</b>
Unemployed	185	100	63	34	59	32	42	23	21	11	-	-
Sick / Disabled	649	100	123	19	181	28	192	30	73	11	80	12
Lone Parents	1,557	100	498	32	580	37	407	26	72	5	-	-
Others	59	100	13	22	20	34	19	32	6	10	-	-

Notes:

1. Children aged under 16 and young adults aged 16 to 18 for whom additional benefit allowance payable (see definitions and conventions).



- Amongst the Sick / Disabled Group proportionally fewer children were under the age of five compared to other statistical groups. This reflects the older age profile of those claiming a sickness and/or disability benefit (although many of this group's ages were unknown). The children of lone parents had the youngest profile, with 69.2% being aged under 11.

These figures are not seasonally adjusted. Comparisons should be made 'year on year'.

**Table 5 Children and young adult dependants<sup>1</sup> of key benefits by statistical group of family and duration of claim: November 2002**

*Thousands and percentages*

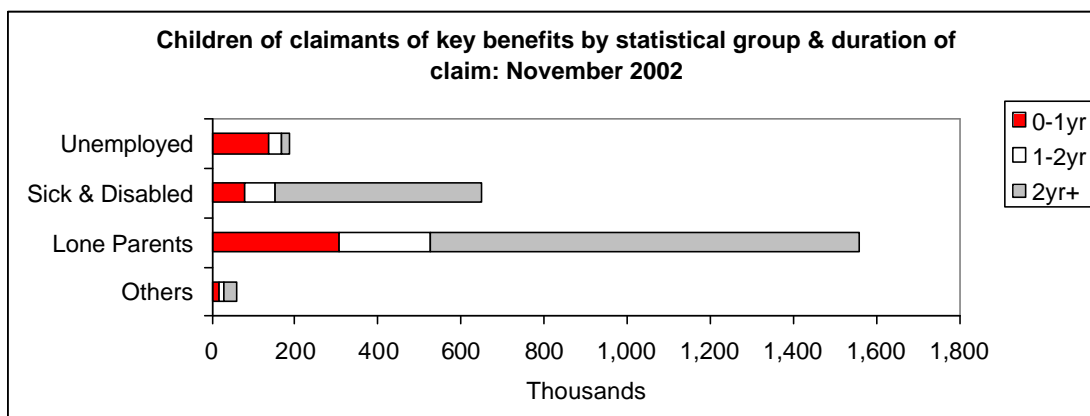
	All durations		Duration of oldest claim <sup>2</sup>									
	Thousands	%	Under 3 months	%	3 to under 6 months	%	6 months to under 1 year	%	1 to under 2 years	%	2 years or over	%
<b>All statistical groups</b>	<b>2,450</b>	<b>100</b>	<b>167</b>	<b>7</b>	<b>150</b>	<b>6</b>	<b>221</b>	<b>9</b>	<b>332</b>	<b>14</b>	<b>1,580</b>	<b>64</b>
Unemployed	185	100	64	35	35	19	36	19	31	17	19	10
Sick /Disabled	649	100	19	3	23	4	37	6	73	11	498	77
Lone Parents	1,557	100	77	5	87	6	141	9	220	14	1,032	66
Others	59	100	7	12	6	10	6	10	8	14	32	54

*Notes:*

1. Children aged under 16 and young adults aged 16 to 18 for whom additional benefit allowance payable.

2. Oldest benefit payable during current spell of benefit receipt (see definitions and conventions).

- Of those children in families on a key benefit, 64% had been on benefit for at least two years (compared to 63% at November 2001). For the Sick & Disabled group the figure was 77%, while that for the unemployed was only 10%.
- Of those children in families classed as unemployed, 73% had been on benefit for less than a year.



These figures are not seasonally adjusted. Comparisons should be made 'year on year'.

**Table 6: Children and young adult dependants<sup>1</sup> of claimants of key benefits by duration of claim: November 2000 to November 2002.**

		<i>Thousands and percentages</i>				
	<b>All durations</b>	Duration of oldest claim <sup>2</sup>				
		Under 3 months	3 to under 6 months	6 months to under 1 year	1 to under 2 years	2 years or over
November 2000	<b>2,613</b>	197	175	259	394	1,588
%	<b>100</b>	8	7	10	15	61
November 2001	<b>2,512</b>	162	156	238	367	1,589
%	<b>100</b>	6	6	9	15	63
November 2002	<b>2,450</b>	167	150	221	332	1,580
%	<b>100</b>	7	6	9	14	64

*Notes:*

- 1 *Children aged under 16 and young adults aged 16 to 18 for whom additional benefit allowance payable*
- 2 *Oldest benefit payable during current spell of benefit receipt (see definitions and conventions).*

- The percentage of children in families claiming benefit for at least two years was 64% in November 2002. This increased from 63% in November 2001. Conversely, the percentage of children in families claiming benefit for under one year has remained fairly static November 2001 to November 2002

These figures are not seasonally adjusted. Comparisons should be made 'year on year'.

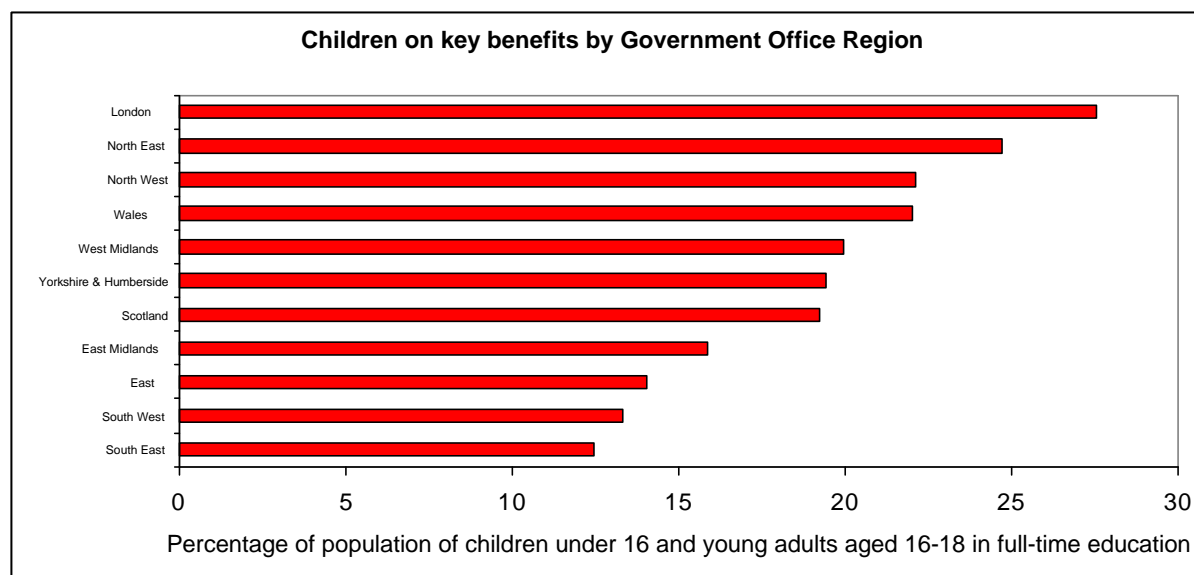
**Table 7 Children and young adult dependants<sup>1</sup> of claimants of key benefits by Government Office Region: November 2002**

	<i>Thousands and percentages</i>	
	'000	% of pop <sup>2</sup>
<b>Great Britain</b>	<b>2,449</b>	<b>19</b>
England	2,096	19
North East	139	25
North West	349	22
Yorkshire and the Humber	222	19
East Midlands	150	16
West Midlands	247	20
East	171	14
London	451	28
South East	225	12
South West	142	13
Wales	146	22
Scotland	207	19
<b>SDA/IB claimants living abroad</b>	<b>1</b>	<b>.</b>

*Notes:*

1. Children aged under 16 and young adults aged 16 to 18 for whom additional benefit allowance payable (see definitions and conventions).
2. Population aged under 16 plus population aged 16 to 18 in full-time education (from Child Benefit estimates).
3. We are using revised population figures, provided by Office for National Statistics.

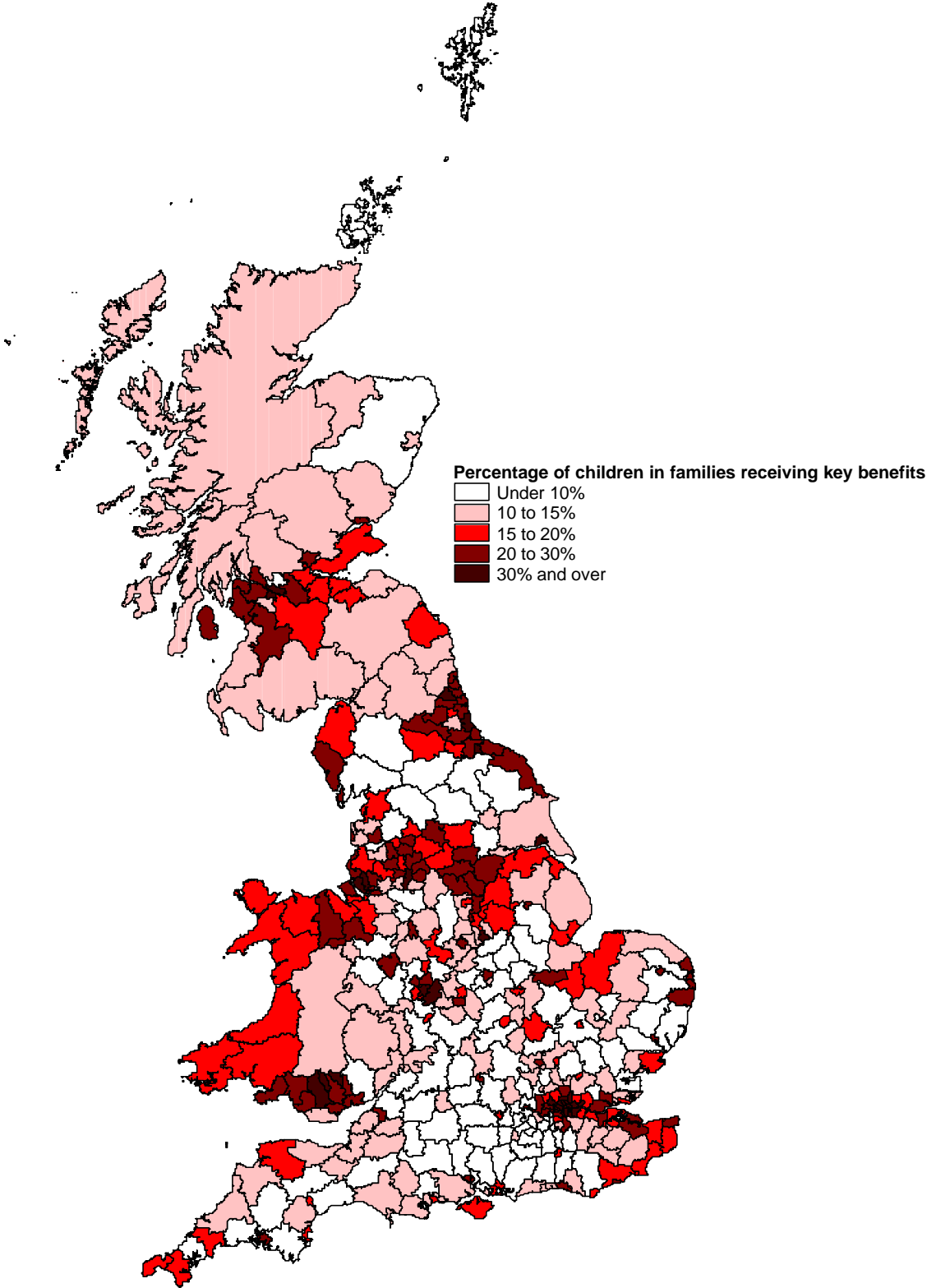
- The percentage of children (aged under 16 or aged 16-18 and in full-time education) living in families claiming a key benefit varied from 28% in the London Government Office Region (GOR) down to 12% in the South East GOR. All regions have areas with high and low proportion of children living in families on key benefits. For example, in the North East 8.7% of children in Castle Morpeth lived in families on key benefits compared to 34% of children in Easington.



Further regional benefit statistics can be accessed at the Neighbourhood Statistics Service web site at: <http://www.neighbourhood.statistics.gov.uk/home.asp>

These figures are not seasonally adjusted. Comparisons should be made 'year on year'.

**Children of claimants of key benefits, as a percentage of population aged under 16 or aged 16-19 in full time education: November 2002**



These figures are not seasonally adjusted. Comparisons should be made 'year on year'.

**Table 8 Children and young adult dependants<sup>1</sup> of claimants of combinations of key benefits: November 2002**

	<i>Thousands and percentages</i>	
	Number of children/deps	<i>% population<sup>2</sup></i>
<b>All combinations</b>	<b>2,450</b>	<b>18</b>
IS only	1,649	12
JSA only	181	1
IS & IB	304	2
IS, IB & DLA <sup>3</sup>	153	1
IB only	42	-
IB & DLA	36	-
IS & DLA	51	-
IS, DLA & SDA	22	-
IS & SDA	7	-
DLA & SDA	2	-
DLA & JSA	1	-
SDA only	1	-
Others <sup>4</sup>	3	-

*Notes:*

- 1 Children aged under 16 and young adults aged 16 to 18 for whom additional benefit allowance payable
- 2 Population aged under 16 plus population aged 16-18 in full-time education
- 3 No allowance payable for dependants of recipients of DLA only, therefore no such dependants included in figures
- 4 Due to slight differences in dates of benefit data extracts, includes anomalies such as IB with JSA (see definitions and conventions).
- 5 We are using revised population figures, provided by Office for National Statistics.

- 67% of 'key benefit' children were in families claiming IS only, reflecting the fact that lone parents form the majority of families with children dependent on key benefits.

These figures are not seasonally adjusted. Comparisons should be made 'year on year'.

## Families on Benefit

**Table 9 Families<sup>1</sup> on key benefits by statistical group and duration of claim: November 2002**

	<i>Thousands and percentages</i>											
	All durations		Duration of oldest claim <sup>2</sup>									
			Under 3 months	3 to under 6 months	6 months to under 1 year	1 to under 2 years	2 years or over	%	%	%	%	%
<b>All statistical groups</b>	<b>1,282</b>	<b>100</b>	<b>89</b>	<b>7</b>	<b>82</b>	<b>6</b>	<b>122</b>	<b>10</b>	<b>181</b>	<b>14</b>	<b>809</b>	<b>63</b>
Unemployed	90	100	33	37	17	19	18	20	14	16	8	9
Sick / Disabled	345	100	10	3	12	3	19	6	38	11	267	77
Lone Parents	823	100	43	5	50	6	82	10	126	15	521	63
Others	25	100	3	12	2	8	3	12	4	16	13	52

*Notes:*

1. Claimants with children aged under 16 or young adult dependants aged 16 to 18 for whom additional benefit allowance payable
2. Oldest benefit payable during current spell of benefit receipt (see definitions and conventions).

- 63% of families on key benefits had been on benefit for at least two years. For the Sick / Disabled group the figure was 77% while that for the unemployed was 9%.
- 75% of families classed as unemployed had been on benefit for less than a year.

**Table 10 Families<sup>1</sup> on key benefits by duration of claim: November 2000 to November 2002**

	<i>Thousands and percentages</i>					
	All durations	Duration of oldest claim <sup>2</sup>				
		Under 3 months	3 to under 6 months	6 months to under 1 year	1 to under 2 years	2 years or over
November 2000	<b>1,364</b>	105	93	140	210	817
%	<b>100</b>	8	7	10	15	60
November 2001	<b>1,313</b>	85	84	132	198	814
%	<b>100</b>	7	6	10	15	62
November 2002	<b>1,282</b>	89	82	122	181	809
%	<b>100</b>	7	6	9	14	63

*Notes:*

1. Claimants with children aged under 16 or young adult dependants aged 16 to 18 for whom additional benefit allowance payable (see definitions and conventions).
2. Oldest benefit payable during current spell of benefit receipt

- In the last two years the number of families on a benefit for at least two years increased from 60% in November 2000 to 63% in November 2002. In the same period the percentage of families on a benefit for under one year dropped from 25% to 23%.

These figures are not seasonally adjusted. Comparisons should be made 'year on year'.

**Table 11 Families<sup>1</sup> on key benefits by statistical group and age of youngest child: November 2002**

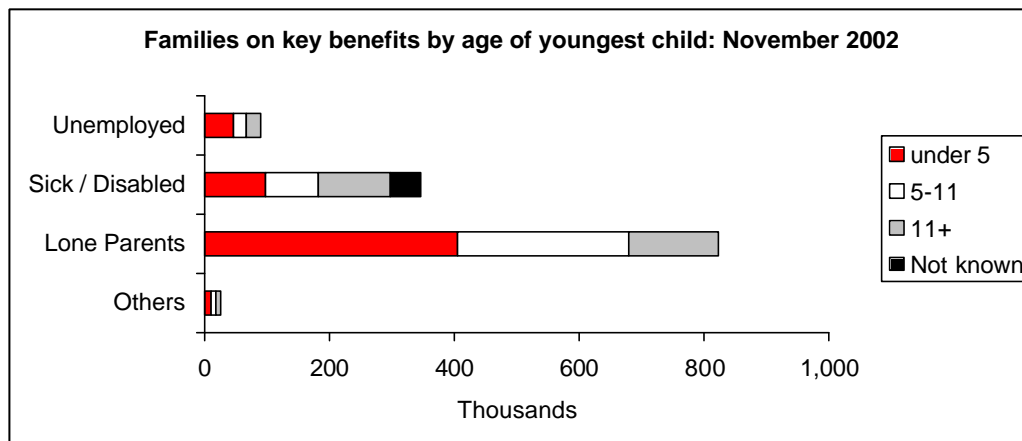
*Thousands and percentages*

	All ages		Age of youngest child								Not known	
	Thousands	%	Under 5	%	5-11	%	11-16	%	16+	%	Thousands	%
<b>All statistical groups</b>	<b>1,282</b>	<b>100</b>	<b>557</b>	<b>43</b>	<b>386</b>	<b>30</b>	<b>238</b>	<b>19</b>	<b>52</b>	<b>4</b>	<b>49</b>	<b>4</b>
Unemployed	90	100	47	52	19	21	12	13	12	13	-	-
Sick / Disabled	345	100	96	28	86	25	81	23	32	9	49	14
Lone Parents	823	100	405	49	273	33	139	17	6	1	-	-
Others	25	100	10	40	8	32	6	24	2	8	-	-

*Notes:*

1. Claimants with children aged under 16 or young adults aged 16 to 18 for whom additional benefit allowance payable (see definitions and conventions).

- Of the youngest children of families on key benefits, 43% were under the age of five.
- For the Sick & Disabled the age profile of the youngest children was older (although many of this group's ages were unknown).



These figures are not seasonally adjusted. Comparisons should be made 'year on year'.

**Table 12 Families<sup>1</sup> on key benefits with children and/or young adult dependants: November 2000 to November 2002**

*Thousands and percentages*

	All families	Age of youngest child				
		Under 5	5 to under 11	11 to under 16	16 or over	Not known
November 2000	<b>1,364</b>	602	414	237	51	60
%	<b>100</b>	44	30	17	4	4
November 2001	<b>1,313</b>	573	398	235	52	55
%	<b>100</b>	44	30	18	4	4
November 2002	<b>1,282</b>	557	386	238	52	49
%	<b>100</b>	43	30	19	4	4

Notes:

1 Claimants with children aged under 16 or young adults aged 16 to 18 for whom additional benefit allowance payable (see definitions and conventions).

- Between November 2000 and November 2002 there has been a gradual shift in the age profile of the youngest child in families on key benefits, with the proportion of families with the youngest child under 11 slightly falling.

**Table 13 Families<sup>1</sup> on key benefits by statistical group and number of children: November 2002**

*Thousands*

	All families	Number of children			
		One	Two	Three	Four or more
<b>All statistical groups</b>	<b>1,282</b>	<b>571</b>	<b>414</b>	<b>190</b>	<b>108</b>
Unemployed	<b>90</b>	36	28	15	11
Sick / Disabled	<b>345</b>	164	104	47	30
Lone Parents	<b>823</b>	363	274	123	63
Others	<b>25</b>	8	8	5	5

Notes:

1 Claimants with children aged under 16 or young adults aged 16 to 18 for whom additional benefit allowance payable (see definitions and conventions).

- While 4.2% of families claiming Child Benefit had four or more children (November 2002), the figure was 8.4% for families on key benefits. For the unemployed the figure was higher: 11.9%.

These figures are not seasonally adjusted. Comparisons should be made 'year on year'.

## Children and Families claiming benefit and/or receiving tax credits

### Background

Working Families' Tax Credit (WFTC) replaced Family Credit (FC) from 5 October 1999. It is a tax credit available to working families with children. Disabled Person's Tax Credit (DPTC) replaced Disability Working Allowance (DWA) from 5 October 1999. It is a tax credit available to working people who have an illness or disability, which puts them at a disadvantage in getting a job. Both are administered by the Inland Revenue. A small number of people are in receipt of both benefits and tax credits.

### Statistical group

When DPTC and the WFTC are included alongside benefits in the client group analysis, families are assigned to statistical group according to the following hierarchy:

<i>If claimant receives</i>	JSA (including credits)	<i>then family assigned to:</i>	Unemployed
<i>Otherwise, if claimant receives</i>	IB (including credits)	“ “	Sick / Disabled
“ “	SDA	“ “	Sick / Disabled
“ “	IS, with disability premium	“ “	Sick / Disabled
“ “	IS, single	“ “	Lone Parents
“ “	IS	“ “	Others
“ “	WFTC (or FC pre Oct 99)	“ “	Working Family
“ “	DPTC (or DWA pre Oct 99)	“ “	Working Disabled

As WFTC and DPTC awards can remain in payment after employment has ended (they are paid for six months irrespective of circumstances), those people who also receive a key benefit are allocated to the appropriate group based on the benefit received. For example, a person receiving WFTC who also receives IS as a lone parent is allocated to the 'Lone Parents' group. This explains why the numbers in this bulletin can differ from those shown in the separate DWP and IR benefit and tax credit publications.

Dependent children do not affect the amounts of award of 'Contribution-based' or 'Credits only' IB/JSA and, as such, information relating to them can be somewhat incomplete. However, when combined with information from income-related benefits or tax credits, a much better indication of dependants is obtained. Therefore figures relating to 'Unemployed' and 'Sick / Disabled' may differ slightly to those shown in the benefit-only tables.

The data on awards of Working Families' Tax Credit and Disabled Person's Tax Credit used in tables 14-20 are supplied by, and used with the agreement of, Inland Revenue.

These figures are not seasonally adjusted. Comparisons should be made 'year on year'.

**Table 14 Children and young adult dependants<sup>1</sup> of claimants of key benefits and/or recipients of tax credits by statistical group of family: November 2000 to November 2002**

	<i>Thousands and percentages</i>					
	Number of children/dependants <sup>1</sup>					
	Nov-00	%	Nov-01	%	Nov-02	%
<b>All statistical groups</b>	<b>4,770</b>	<b>100</b>	<b>4,927</b>	<b>100</b>	<b>4,993</b>	<b>100</b>
Unemployed	251	5	201	4	187	4
Sick / Disabled	666	14	671	14	661	13
Lone Parents	1,643	34	1,593	32	1,557	31
Others	66	1	61	1	59	1
Working Family	2,122	44	2,375	48	2,499	50
Working Disabled	21	-	26	1	29	1

Notes:

1. Children aged under 16 and young adult dependants aged 16 to 18 for whom additional benefit allowance payable (see definitions and conventions).

**Table 15 Children and young adult dependants<sup>1</sup> of claimants of key benefits and/or recipients of tax credits by statistical group of family & family type: November 2002**

	<i>Thousands and percentages</i>									
	Children aged under 16 years					Young dependants aged 16 to 18 years				
	All	% pop aged under 16	Family Type			All	% pop aged 16-18 <sup>2</sup>	Family Type		
Couple			Single	Not known	Couple			Single	Not known	
<b>All statistical groups</b>	<b>4,628</b>	<b>40</b>	<b>1,867</b>	<b>2,715</b>	<b>46</b>	<b>364</b>	<b>25</b>	<b>133</b>	<b>231</b>	<b>-</b>
Unemployed	166	1	159	7	-	21	1	11	10	-
Sick /Disabled	587	5	362	179	46	74	5	41	33	-
Lone Parents	1,485	13	-	1,485	-	72	5	-	72	-
Others	53	-	52	1	-	6	-	6	-	-
Working Family	2,312	20	1,278	1,034	-	187	13	74	114	-
Working Disabled	25	-	15	10	-	4	-	2	2	-

Notes:

1 Children aged under 16 and young adults aged 16 to 18 for whom additional benefit allowance payable (see definitions and conventions).

2 Population figures based on 16 to 18 year olds in full time education and for whom Child Benefit is payable

These figures are not seasonally adjusted. Comparisons should be made 'year on year'.

**Table 16 Children and young adult dependants<sup>1</sup> of claimants of key benefits and/or recipients of tax credits by statistical group of family and age of child: November 2002**

*Thousands and percentages*

	Number of children/dependants <sup>1</sup>											
	All ages		Under 5		5 to under 11		11 to under 16		16 or over		Not known	
		%		%		%		%		%		%
<b>All statistical groups</b>	<b>4,993</b>	<b>100</b>	<b>1,394</b>	<b>28</b>	<b>1,756</b>	<b>35</b>	<b>1,398</b>	<b>28</b>	<b>364</b>	<b>7</b>	<b>80</b>	<b>2</b>
Unemployed	187	100	64	34	60	32	42	22	21	11	-	-
Sick / Disabled	661	100	126	19	185	28	196	30	74	11	79	12
Lone Parents	1,557	100	498	32	580	37	407	26	72	5	-	-
Others	59	100	13	22	20	34	19	32	6	10	-	-
Working Family	2,499	100	687	27	901	36	724	29	187	7	-	-
Working Disabled	29	100	5	17	9	31	10	34	4	14	-	-

Notes:

1 Children aged under 16 and young adult dependants aged 16 to 18 for whom additional benefit allowance payable (see definitions and conventions).

**Table 17 Children and young adult dependants<sup>1</sup> of claimants of key benefits and/or recipients of tax credits by statistical group of family and duration of claim: November 2002**

*Thousands and percentages*

	Duration of oldest claim <sup>2</sup>											
	All durations		Under 3 months		3 to under 6 months		6 months to under 1 year		1 to under 2 years		2 years or over	
		%		%		%		%		%		%
<b>All statistical groups</b>	<b>4,993</b>	<b>100</b>	<b>519</b>	<b>10</b>	<b>473</b>	<b>9</b>	<b>637</b>	<b>13</b>	<b>884</b>	<b>18</b>	<b>2,480</b>	<b>50</b>
Unemployed	187	100	53	28	38	20	40	21	34	18	22	12
Sick / Disabled	661	100	18	3	24	4	39	6	75	11	505	76
Lone Parents	1,557	100	73	5	87	6	143	9	222	14	1,034	66
Others	59	100	6	10	5	8	7	12	9	15	32	54
Working Family	2,499	100	368	15	318	13	406	16	539	22	869	35
Working Disabled	29	100	1	3	1	3	2	7	5	17	19	66

Notes:

1 Children aged under 16 and young adults aged 16 to 18 for whom additional benefit payable (see definitions and conventions).

2 Oldest benefit payable during current spell of benefit receipt

These figures are not seasonally adjusted. Comparisons should be made 'year on year'.

**Table 18 Families<sup>1</sup> on key benefits and/or recipients of tax credits by statistical group of family and duration: November 2002**

	<i>Thousands and percentages</i>											
	All durations		Duration of oldest claim <sup>2</sup>									
			Under 3 months		3 to under 6 months		6 months to under 1 year		1 to 2 years		2 years or over	
		%		%		%		%		%		%
<b>All statistical groups</b>	<b>2,597</b>	<b>100</b>	<b>280</b>	<b>11</b>	<b>253</b>	<b>10</b>	<b>337</b>	<b>13</b>	<b>462</b>	<b>18</b>	<b>1,265</b>	<b>49</b>
Unemployed	91	100	28	31	19	21	19	21	15	16	10	11
Sick / Disabled	352	100	9	3	13	4	21	6	39	11	270	77
Lone Parents	823	100	41	5	51	6	83	10	127	15	522	63
Others	25	100	3	12	2	8	3	12	4	16	13	52
Working Family	1,291	100	199	15	168	13	210	16	275	21	440	34
Working Disabled	16	100	1	6	1	6	1	6	3	19	11	69

Notes:

- 1 Claimants with children aged under 16 or young adults aged 16 to 18 for whom additional benefit allowance payable (see definitions and conventions).
- 2 Oldest benefit payable during current spell of benefit receipt.

**Table 19 Families<sup>1</sup> on key benefits and/or recipients of tax credits by statistical group of family and age of youngest child: November 2002**

	<i>Thousands and percentages</i>											
	All ages		Age of youngest child									
			Under 5		5-11		11-16		16+		Not known	
		%		%		%		%		%		%
<b>All statistical groups</b>	<b>2,597</b>	<b>100</b>	<b>1,107</b>	<b>43</b>	<b>826</b>	<b>32</b>	<b>502</b>	<b>19</b>	<b>113</b>	<b>4</b>	<b>49</b>	<b>2</b>
Unemployed	91	100	47	52	19	21	12	13	12	13	-	-
Sick / Disabled	352	100	99	28	89	25	83	24	33	9	49	14
Lone Parents	823	100	405	49	273	33	139	17	6	1	-	-
Others	25	100	10	40	8	32	6	24	2	8	-	-
Working Family	1,291	100	542	42	432	33	258	20	58	4	-	-
Working Disabled	16	100	4	25	4	25	5	31	2	13	-	-

Notes:

1. Claimants with children aged under 16 or young adults aged 16 to 18 for whom additional benefit allowance payable (see definitions and conventions).

These figures are not seasonally adjusted. Comparisons should be made 'year on year'.

**Table 20 Families<sup>1</sup> on key benefits and/or recipients of tax credits by statistical group and number of children: November 2002**

		<i>Thousands</i>			
	All families	Number of children			
		One	Two	Three	Four or more
<b>All statistical groups</b>	<b>2,597</b>	<b>1,087</b>	<b>906</b>	<b>404</b>	<b>200</b>
Unemployed	91	36	28	15	11
Sick / Disabled	352	166	107	48	31
Lone Parents	823	363	274	123	63
Others	25	8	8	5	5
Working Family	1,291	506	484	211	90
Working Disabled	16	7	6	2	1

*Notes:*

1. *Claimants with children under 16 or young adults aged 16 to 18 for whom additional benefit allowance payable (see definitions and conventions).*

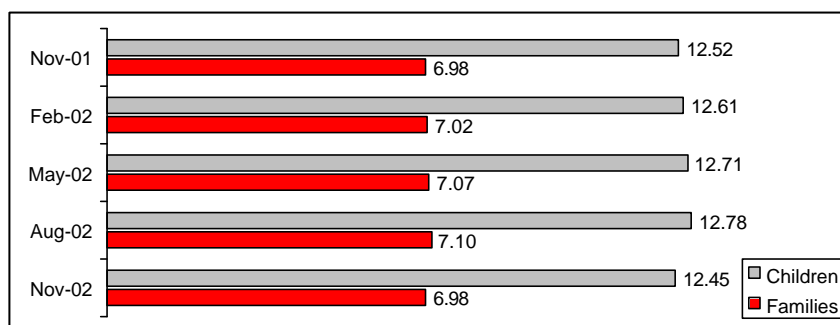
These figures are not seasonally adjusted. Comparisons should be made 'year on year'.

# Appendices

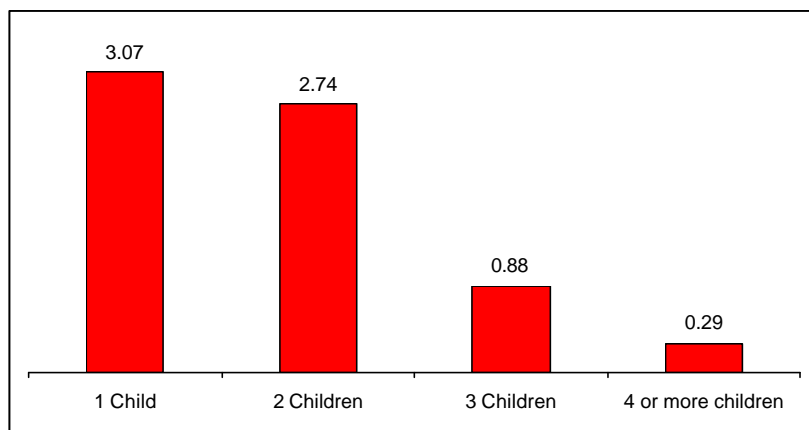
## Appendix 1 – Child Benefit

- At the end of November 2002 there were around 6.98 million families receiving a payment of Child Benefit and 12.45 million children for whom a payment of Child Benefit was being made. The number of children has decreased but families remain the same compared to the same point a year earlier.
- Within academic years, the caseload rises as new births outstrip those 16-18 year olds leaving full-time education - up to A-level or NVQ level 3 standard - and so no longer being eligible for Child Benefit. At the end of each academic year (early September, officially), the volume of 16-18 year olds leaving full-time education is at its greatest, outstripping new births, and the Child Benefit caseload falls again.

**Child Benefit caseload: Families and children (millions), November 2002**

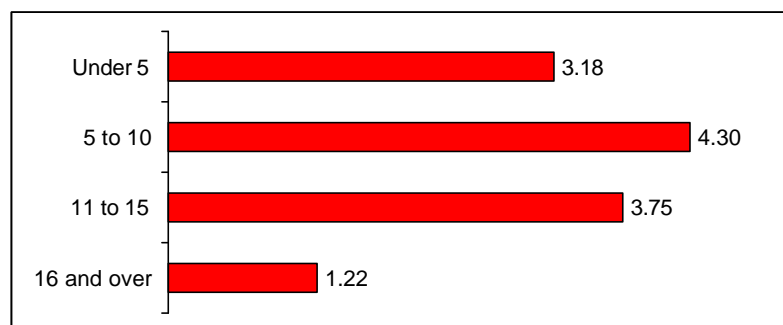


**Child Benefit families by number of children, November 2002 (millions)**



These figures are not seasonally adjusted. Comparisons should be made 'year on year'.

**Child Benefit caseload by age of children, November 2002 (millions)**



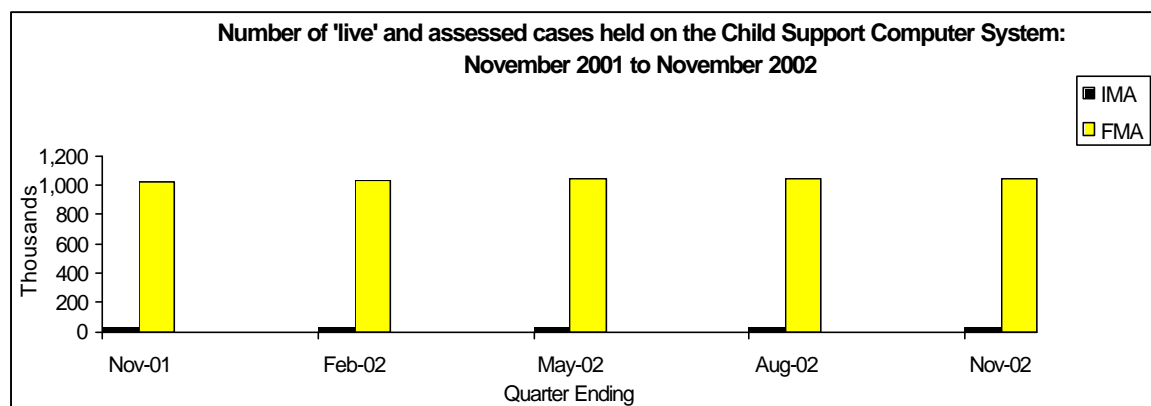
**Child Benefit rates**

	<i>£ per week</i>		
	Eldest qualifying child of a couple	Eldest qualifying child of a lone parent	Each other child
Apr-92	9.65	15.50	7.80
Apr-93	10.00	16.05	8.10
Apr-94	10.20	16.35	8.25
Apr-95	10.40	16.70	8.45
Apr-96	10.80	17.10	8.80
Apr-97	11.05	17.10	9.00
Apr-98	11.45	17.10	9.30
Apr-99	14.40	17.10	9.60
Apr-00	15.00	17.55	10.00
Apr-01	15.50	17.55	10.35
Apr-02	15.75	17.55	10.55

These figures are not seasonally adjusted. Comparisons should be made 'year on year'.

## Appendix 2 – Child Support Agency

At the end of November 2002 there were 1,048.3 thousand 'live' and fully assessed cases held on the Child Support Computer System (CSCS).



- The average weekly maintenance assessment for all 'live' fully assessed cases rose from £20.81 to £21.17 during the period November 2001 to November 2002. Non Resident Parents with regular income working as an employee had an average weekly full maintenance assessment of £39.20 at the end of November 2002, compared with £23.09 for the self-employed. However, the NRP benefit/employment status used to produce these figures may not fully reflect the current position.

**Table 1 Number of NRPs with a full maintenance assessment and average value of assessment: November 2001 to November 2002**

<i>NRPs with a full maintenance assessment</i>		
	FMA (thousands)	Average £ pw
November 2001	1,019.0	£20.81
February 2002	1,031.8	£20.87
May 2002	1,045.7	£21.10
August 2002	1,041.1	£21.16
November 2002	1,048.3	£21.17

- Parents with Care are assigned to a benefit status according to the following order of priority: receiving Working Families' Tax Credit (WFTC), receiving income-based Jobseeker's Allowance (JSA(IB)), receiving Income Support (IS), and 'Other' (i.e. cases not covered earlier in the list whose income is from other sources, such as pensions, investments, irregular and regular employment income, and other benefits).

These figures are not seasonally adjusted. Comparisons should be made 'year on year'.

**Table 2 Benefit Status of PWC, November 2001 – November 2002: full assessments**

*Thousands and percentages*

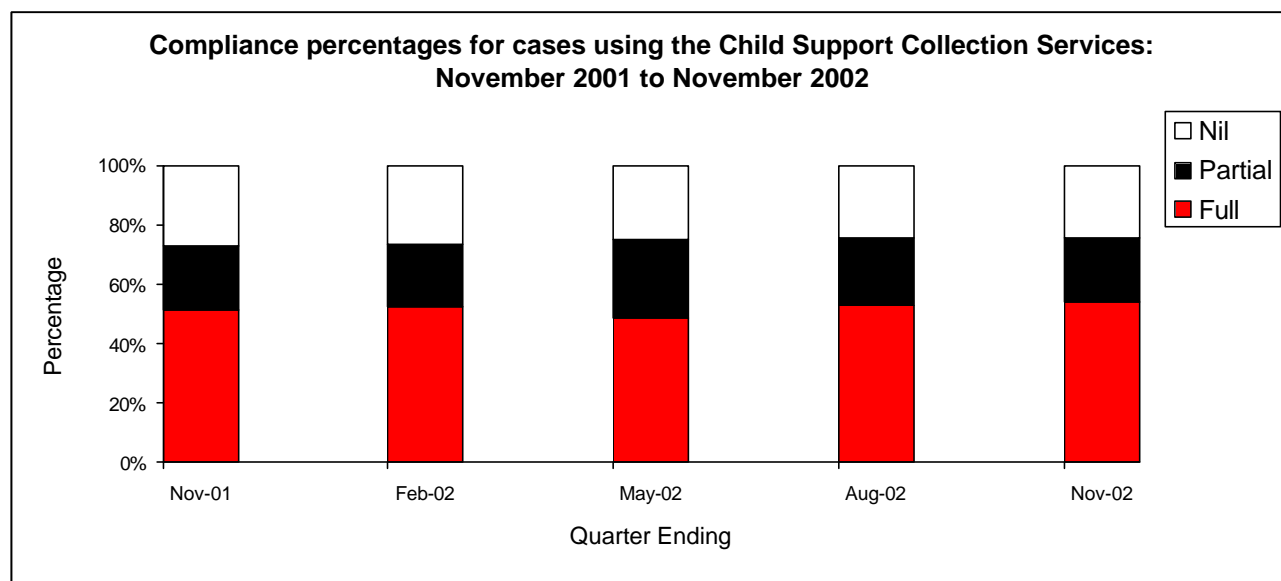
	Total	PWC Benefit Status							
		Income Support		JSA (IB)		WFTC		Other	
			%		%		%		%
November 2001	<b>1,019.0</b>	380.9	37.4	8.6	0.8	258.0	25.3	371.4	36.5
February 2002	<b>1,031.8</b>	383.0	37.1	9.2	0.9	261.8	25.4	377.8	36.6
May 2002	<b>1,045.7</b>	386.5	37.0	8.7	0.8	262.3	25.1	388.2	37.1
August 2002	<b>1,041.1</b>	387.2	37.2	8.2	0.8	274.6	26.4	371.2	35.7
November 2002	<b>1,048.3</b>	379.3	36.2	7.9	0.8	273.6	26.1	387.5	37.0

- In the following table, the 'Not Applicable' category includes those cases where payment is not via the collection service, or where the NRP was not charged anything during the quarter.

**Table 3 Compliance levels for 'live and fully assessed' cases, November 2001 to November 2002 caseload**

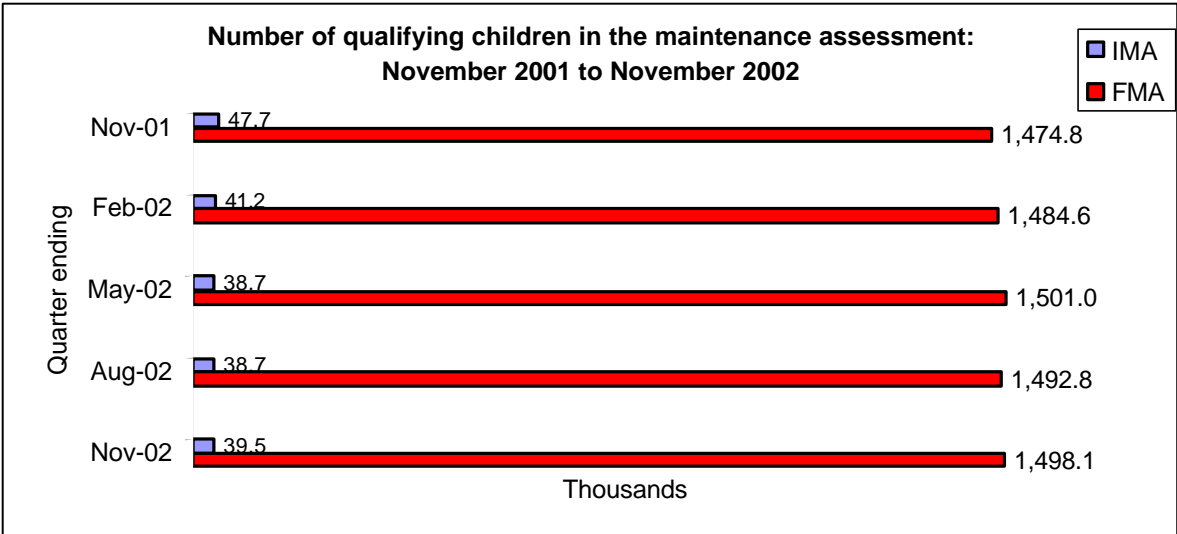
*Thousands*

	Total	Not Applicable	Full	Partial	Nil
November 2001	<b>1,019.0</b>	647.4	190.4	80.4	100.7
February 2002	<b>1,031.8</b>	663.9	193.1	76.3	98.5
May 2002	<b>1,045.7</b>	674.4	181.5	97.4	92.4
August 2002	<b>1,041.1</b>	667.8	197.7	85.1	90.4
November 2002	<b>1,048.3</b>	671.4	204.2	81.4	91.3



These figures are not seasonally adjusted. Comparisons should be made 'year on year'.

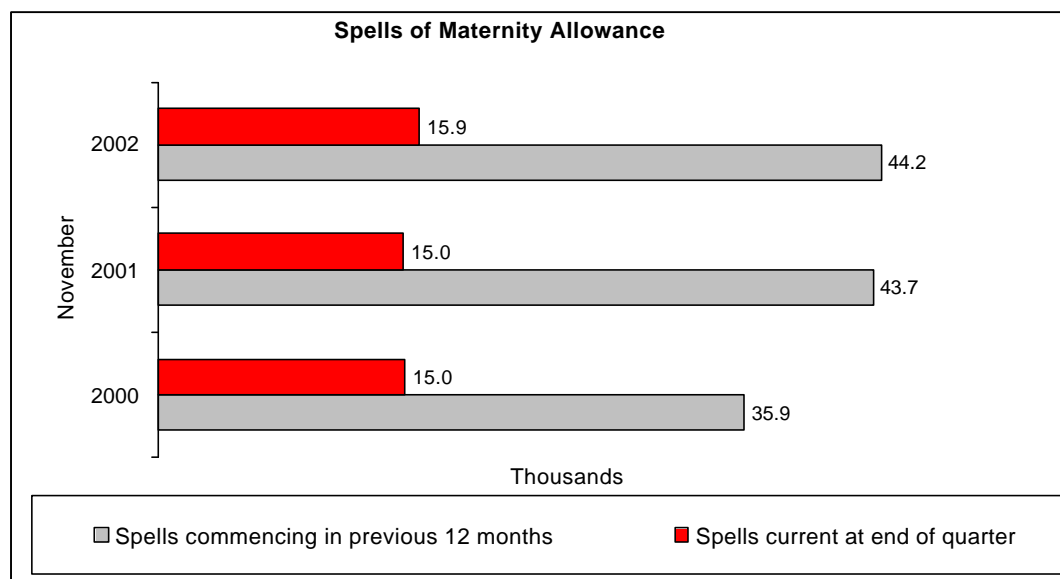
The number of qualifying children in the fully assessed caseload has increased by 1.6% overall since November 2001.



These figures are not seasonally adjusted. Comparisons should be made 'year on year'.

## Appendix 3 – Maternity Allowance

At the end of November 2002 there were 15.9 thousand spells of Maternity Allowance in payment, 5.9% up on two years earlier, and reflecting the increase in the number of new spells.



### Maternity Allowance rates

	<i>£ per week</i>		
	Higher rate <sup>1</sup>	Lower rate	Increase for dependants
Apr-92	.	42.25	25.50
Apr-93	.	43.75	26.40
Apr-94	.	44.55	26.90
Oct-94	52.50	44.55	26.90
Apr-95	52.50	45.55	27.50
Apr-96	54.55	47.35	28.55
Apr-97	55.70	48.35	29.15
Apr-98	57.70	50.10	30.20
Apr-99	59.55	51.70	31.15
Apr-00	60.20	52.25	31.50
Apr-01 <sup>2</sup>	62.20 <sup>2</sup>	.	32.55
Apr-02 <sup>2</sup>	75.00	.	33.10

*Notes:*

1. The woman must be an employee in the 15<sup>th</sup> week before the baby is expected (the 'qualifying week').
2. In April 2001 the higher and lower rates of maternity allowance were abolished and replaced by a standard rate.

These figures are not seasonally adjusted. Comparisons should be made 'year on year'.

## Methodology

A full description of the methodology used to produce these analyses and the possible uses that can be made of the data is available from the contact point listed earlier in this publication.

### *Summary of methodology*

These analyses have been constructed by matching 5% samples for the individual benefits/tax credits that they cover. People in these individual samples are selected using the last two digits of the national insurance number (NINO). This sampling scheme ensures that the same set of people will be selected for each individual benefit/tax credit and time period for which they have a live claim or award.

To produce the client group analyses, a common 'snapshot' date is chosen and the NINOs for each person claiming a benefit or receiving a tax credit on this date are selected. The NINOs are then matched to produce an overall data set for those who are claiming at least one benefit or receiving a tax credit on the snapshot date. The individual data items used for the various analyses (e.g. age, sex, number of children for which additional benefit payable) are then taken from the source data sets and additional variables are then derived (e.g. statistical group, family type).

This methodology gives a 'best estimate' of the overall number of claimants of benefits and recipients of tax credits. However, there are some minor limitations, e.g. the sample of JSA claimants is taken about two weeks before the snapshot date. The best estimates for the numbers claiming each benefit are still given by the individual samples from which the data are drawn. These are published by DWP Information and Analysis Directorate and tax credit statistics are published by Inland Revenue Analysis and Research Services.

### **Children and Families**

These analyses are based on children in families where the claimant receives an additional allowance of benefit for children or young adult dependants (i.e. those aged 16-18 and still in full-time education); AND those children in families in receipt of contribution-based JSA or JSA National Insurance credits only, with children or young adult dependants recorded in the assessment. Additional amounts are payable for all dependant children in families receiving income related benefits (i.e. Income Support or Jobseeker's Allowance (Income Based)) or tax credits. The main gaps are children of claimants of Incapacity Benefit and Severe Disablement Allowance, for whom children information is incomplete; and children of claimants of Disability Living Allowance, for whom no children information is recorded.

### *Family type*

The 'family type' analyses (i.e. single, couple, not known) in tables 2, 3 and 15 are based primarily on claimants who receive additional amounts of benefit or tax credit for their partner. These amounts are payable for all partners of claimants of income related benefits or recipients of tax credits, which are received by the majority of people covered by these analyses. The main gap comes from claimants of IB/SDA where additional benefit is payable only to those who have a partner who is not working and is looking after children. Most IB/SDA claimants do not qualify for these allowances, though the DWP Family Resources Survey (FRS) suggests that about half have a partner.

This table explains the definitions used in the 'family type' tables:

<i>Family type</i>	<i>Definition</i>
Couple	People who receive an additional allowance of benefit or tax credit for their partner; or those in receipt of contribution-based JSA or JSA national insurance credits only, with a partner recorded.
Single	People who have their status recorded as single and therefore do not receive an additional allowance of benefit or tax credit for a partner.
Not known	People who do not have a marital status recorded and are not receiving an additional allowance of benefit or tax credit for a partner. These are mainly IB/SDA claimants and include a small number who receive allowances for dependants but not partners.

### *Clerical cases*

Some of the claims to each of the key benefits featured in this bulletin are not administered using the relevant DWP computer system. These claims are administered clerically and make up a very small proportion of people of working age who claim a key benefit. Therefore most clerical cases have been excluded, except Income Support claims where clerical cases are included.

### *Sampling error*

The analyses in this report are subject to 'sampling error', i.e. by chance the number of cases in the sample with certain characteristics (e.g. "with children") may produce rated up estimates for the population which are slightly lower or slightly higher than the true population value. An indication of the effect of these sampling errors can be gained from the table of 'confidence intervals' below. Each figure shown in the tables in this report is a best estimate based on the sample data. The true number will most probably lie somewhere in a range around this estimate. The size of this range is usually indicated by a '95% confidence interval'. There is only a 1 in 20 chance that the true value lies outside of this range. Usually this interval is approximately symmetric so, for example, an estimate of 10,000 is really showing that the true value probably lies in the range 9,100 to 10,900.

Approximate 95% confidence intervals for a sample based on 1 in every 20 cases in the population are shown below for estimates of 1,000 or more.

Estimated value	95% confidence interval (+ or -)	Confidence interval as % of estimate (+ or -)
1,000	270	27
2,000	382	19
3,000	468	16
4,000	540	14
5,000	604	12
6,000	662	11
7,000	715	10
8,000	764	10
9,000	811	9
10,000	854	9
20,000	1,208	6
30,000	1,480	5
40,000	1,709	4
50,000	1,910	4
100,000	2,702	3
200,000	3,821	2
300,000	4,679	2
400,000	5,403	1
500,000	6,041	1
600,000	6,618	1
700,000	7,148	1
800,000	7,641	1
900,000	8,105	1
1,000,000	8,543	1

The above method applies only to estimates of numbers of people and not to other characteristics (such as percentages).

ISSN 1472-104X