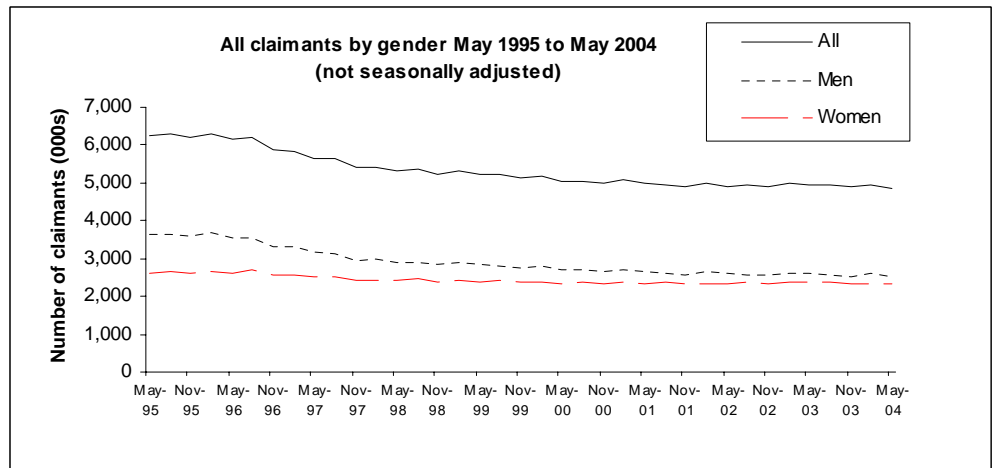


15th September 2004
IAD150904-QBWA-Sep04

Coverage: Great Britain
Theme: Social and Welfare

CLIENT GROUP ANALYSIS: QUARTERLY BULLETIN ON THE POPULATION OF WORKING AGE ON KEY BENEFITS – MAY 2004

4.86 million people of working age were claiming a key benefit in May 2004, down 95 thousand from a year previously, and down 91 thousand from February 2004. The number of male claimants fell by 64 thousand to 2.53 million and the number of female claimants fell by 31 thousand to 2.33 million over the year.



DWP Department for Work and Pensions

Issued by:
Information Centre
Information and Analysis Directorate
Department for Work and Pensions

Telephone :
Press Office : 020 7238 0866
Public Enquiries : 020 7712 2171

DWP website :
www.dwp.gov.uk

Statistician:
Neil Sorensen
Information Centre
Information and Analysis Directorate
Department for Work and Pensions
Room 157A
Benton Park View
Benton Park Road
Longbenton
NEWCASTLE UPON TYNE
NE98 1YX

Telephone : 0191 225 3760
Facsimile : 0191 225 7126
email :
neil.sorensen@dwp.gsi.gov.uk

Next Publication:
15th December 2004.

The number of unemployed claimants fell by 86 thousand between May 2003 and May 2004 and the number of others rose by 4 thousand, while lone parents fell by 38 thousand. The number of claimants who were sick/disabled increased by 25 thousand.

13.7% of the working age population were claiming a key benefit in May 2004 down slightly from a year previous. The sick/disabled statistical group increased from 8.6% to 8.7% over the year.

	May 04		Change on a year ago	
	Claimants (Thousands)	% of population working age	Thousands	Percentage points
All	4,856	13.7	-95	-0.3
Unemployed	797	2.2	-86	-0.2
Sick/Disabled	3,077	8.7	25	0.1
Lone Parents	788	2.2	-38	-0.1
Others	194	0.5	4	0.0

Flows

There were 436 thousand new claimants in the quarter to May 2004 i.e. people receiving a key benefit in May 2004 who were not in February 2004. There were 468 thousand new claimants between February and May 2003.

There were 527 thousand people who flowed off key benefits between February and May 2004 i.e. people receiving a key benefit in February 2004 who were not in May 2004. There were 509 thousand off-flows between February and May 2003.

The number of February to May off-flows to the unemployed group has increased between 2003 and 2004. There were 330 thousand unemployed off-flows between February and May 2004, rising from 321 thousand between February and May 2003.

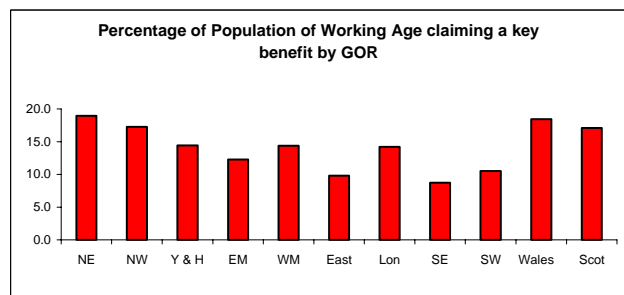
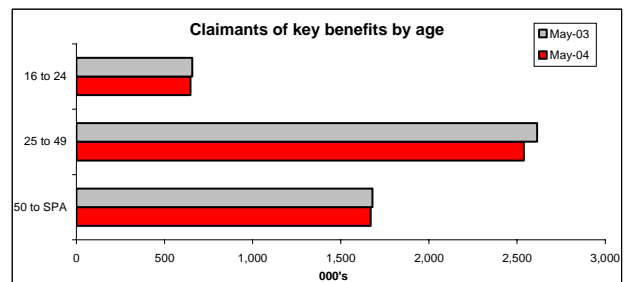
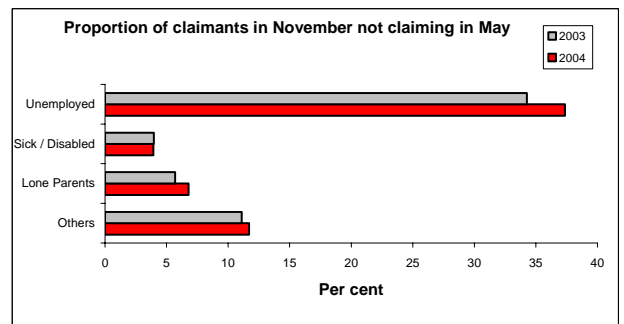
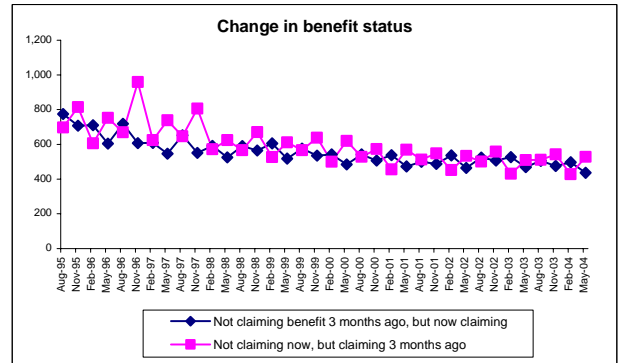
Age Groups

A decrease has been seen in the number of claimants in all age groups 16 to 24, 25 to 49 and 50 to State Pension age in the year to May 2004. The number of unemployed claimants in the 25 to 49 age group fell by 60 thousand (12.0%) between May 2003 and May 2004.

Regions

The proportion of the working age population claiming a key benefit ranged from 18.9% in the North East to 8.7% in the South East.

The proportion of the working age population on key benefits increased in the year to May 2004 in London and the South East, but decreased in all other regions.



Key Benefits

Claimants who receive at least one of:

- Jobseeker's Allowance (JSA);
- Incapacity Benefit and Severe Disablement Allowance (IB & SDA);
- Disability Living Allowance (DLA);
- Income Support (IS);
- National Insurance Credits (through JSA or IB).

Notes to editors

DWP Information and Analysis Directorate (IAD) have developed these analyses from its existing samples of administrative data on the population of working age. This work was done primarily to help improve the relevance of DWP data to monitor the Government's Welfare Reform agenda.

By matching data from individual 5% samples, an estimate can be made of the number of people who were claiming at least one of the key benefits that are available to the population of working age with the main exception of Bereavement Benefit, Housing Benefit and Council Tax Benefit. Information on the key characteristics of these claimants is also available, such as age, sex, geography, family type, statistical group and duration of claim. It is also possible to look at changes in the composition of this group in the benefits system over time, including those that affect individual claimants.

Sections 6 and 7, which previously contained information on children, are no longer included in this bulletin. This information is included in "Client Group Analysis: Quarterly Bulletin on families with children on key benefits", which is also published on 15th September 2004.

These analyses are based on information collected for the administration of benefits. This means that analyses of such things as family type are based mainly on those for whom some additional money via benefits or tax credits is payable.

Figures in these tables are affected by the introduction of new tax credits in April 2003. Please see the Methodology section for further details.

Figures are published on a quarterly basis via the attached statistical bulletin. The definitive estimates of caseloads and characteristics of claimants of each individual benefit can be found in the separate tables that IAD also issues on behalf of DWP.

Previous issues of the bulletin relating to November 1999 and before included those claiming Family Credit (FC) or Disability Working Allowance (DWA). These benefits ceased to be available to new claimants in October 1999 and were completely phased out by April 2000. They were replaced by Working Families' Tax Credit (WFTC) and Disabled Person's Tax Credit (DPTC) which were administered by Inland Revenue. WFTC and DPTC were replaced by the Working Tax Credit (WTC) and Child Tax Credit (CTC) in April 2003. (WTC and CTC are collectively known as 'new tax credits').

The full version of this bulletin in adobe acrobat format is placed on the Internet on the DWP website. The full address is: <http://www.dwp.gov.uk/asd/cga.asp>

For further copies contact:
Steve Topping
IAD Information Centre
Department for Work and Pensions
Room 157A
Benton Park View
Benton Park Road
Longbenton
NEWCASTLE UPON TYNE
NE98 1YX

Telephone : 0191 225 7336
Facsimile : 0191 225 7983
Email : steve.topping@dwp.gsi.gov.uk

Client Group Analysis

Quarterly bulletin on the population of working age on key benefits

May 2004

Contents	Page
Definitions and conventions	4
Summaries.....	5
Section 1. Age and Gender.....	5
Section 2. Family Type.....	7
Section 3. Statistical group and transitions.....	9
Section 4. Benefit entitlement	13
Section 5. Duration on benefit	16
Section 6. Regional Analysis	18
Section 7. Quarterly Tables	19
7.1: Age and Gender	21
7.2: Family Type	26
7.3: Statistical group	29
7.4: Benefit entitlement	32
7.5: Duration of benefit	34
7.6: Regional Analysis	37
Methodology.....	39

Definitions and conventions

Key benefits

Jobseeker's Allowance (JSA)
Incapacity Benefit (IB)
Severe Disablement Allowance (SDA)
Disability Living Allowance (DLA)
Income Support (IS)

Symbols and conventions

Working age is 16 to 64 years for men
16 to 59 years for women

Population estimates are mid year 1995 - 2002
“..” not available
“_” less than 500
“.” not applicable

Figures in these tables are affected by the introduction of Child Tax Credits in April 2003. Please see the Methodology section for further details.

Inland Revenue Tax Credits

Working Tax Credit (WTC)
Child Tax Credit (CTC)
Working Families' Tax Credit (WFTC) prior to April 2003
Disabled Person's Tax Credit (DPTC) prior to April 2003
Family Credit (FC) prior to October 1999
Disability Working Allowance (DWA) prior to October 1999

Statistical group

Claimant of at least one of:

Unemployed	JSA
Sick/Disabled	IB, SDA, DLA or IS with a disability premium
Lone Parent	Single people with children on IS and not receiving a disability related premium
Other	IS claimant not in other groups, e.g. carers, asylum seekers, pensioners (Minimum Income Guarantee/Pension Credit) (Men aged 60-64)

Family Type

This is based mainly on whether the claimant has a partner and dependants for which additional amounts of benefit are payable. These are payable with all benefits except:

JSA (Contribution-based)	(Details still available for partners)
DLA	no details available
IB/SDA	details available only for claimants who qualify for a child and/or partner allowance (not payable in all cases)

Benefit type

Income replacement	IS, JSA, IB and SDA
Other	DLA
NI Credits only	Through claiming JSA or IB

Benefit entitlement

Contributory benefits	IB, Contribution-based JSA
Income related benefits	IS and Income based JSA
Other benefits	SDA, DLA

Summaries

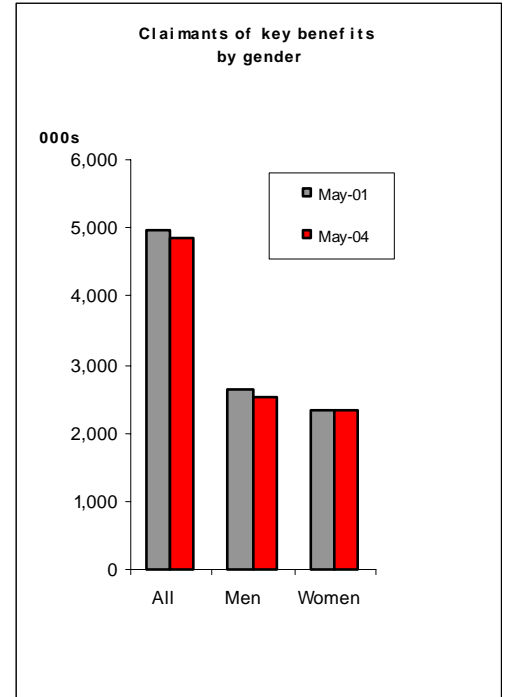
Sections 1 to 6 summarise the main finding from the analysis, whilst section 7 gives quarterly time series.

Section 1. Age and Gender

Table 1.1 Claimants of key benefits by gender: May 2001 to May 2004

	<i>Thousands</i>			
	May-01	May-02	May-03	May-04
All	4,982	4,923	4,951	4,856
% of pop.¹	14.3	13.9	13.9	13.7
Men	2,640	2,592	2,591	2,527
% of pop. ¹	14.7	14.2	14.1	13.8
Women	2,342	2,332	2,359	2,329
% of pop. ¹	13.8	13.7	13.8	13.6

¹ Population of working age



- In May 2004 about 13.7% (4.86 million) of **people of working age** claimed a key benefit - 14.3% (4.98 million) in May 2001.
- About 2.53 million **men** of working age claimed one, compared with 2.33 million **women**. The difference is mainly due to differences in retirement age.
- The **overall number of claimants** fell by 126 thousand between May 2001 and May 2004. The number of male claimants has fallen by 113 thousand and female claimants by 13 thousand. The gap between men and women has therefore narrowed.
- Older people are more likely to be claiming a key benefit than younger ones – 19.5% of those aged 55 to 59 claimed one in May 2004, compared to only 11.9% of those aged 18 to 24. This is mainly due to the fact that older people are more likely to claim a disability benefit.
- Three of the seven age groups have fallen in size since May 2001 with the largest reduction in the 25 to 34 age group (down 133 thousand).

Table 1.2 Claimants of key benefits by age and gender: May 2004

Thousands and percentages

	All		Men		Women	
	(000s)	% of pop in age group	(000s)	% of pop in age group	(000s)	% of pop in age group
All	4,856	13.7	2,527	13.8	2,329	13.6
Under 18	62	4.2	31	4.1	31	4.4
18 to 24	586	11.9	259	10.5	327	13.4
25 to 34	930	11.6	412	10.3	518	12.9
35 to 44	1,104	12.7	520	12.1	584	13.3
45 to 54	1,054	14.2	527	14.3	527	14.0
55 to 59	695	19.5	354	20.1	341	19.0
60 to 64	425	30.9	425	30.9	.	.

Table 1.3 Claimants of key benefits by age: May 2001 to May 2004

Thousands and percentages

	May 2001		May 2002		May 2003		May 2004	
	All	% of pop in age group	All	% of pop in age group	All	% of pop in age group	All	% of pop in age group
All	4,982	14.3	4,923	13.9	4,951	13.9	4,856	13.7
Under 18	56	4.0	55	3.9	61	4.2	62	4.2
18 to 24	582	12.3	575	11.9	597	12.1	586	11.9
25 to 34	1,063	12.9	1,012	12.3	992	12.4	930	11.6
35 to 44	1,096	13.0	1,103	12.9	1,119	12.8	1,104	12.7
45 to 54	1,093	14.5	1,069	14.1	1,063	14.3	1,054	14.2
55 to 59	646	20.4	675	20.5	694	19.5	695	19.5
60 to 64	445	32.2	434	31.6	425	30.9	425	30.9

Table 1.4 Claimants of key benefits by age and gender: May 2001 and May 2004

Thousands and percentages

	Men				Women			
	May 2001		May 2004		May 2001		May 2004	
	(000s)	% of pop in age group	(000s)	% of pop in age group	(000s)	% of pop in age group	(000s)	% of pop in age group
All	2,640	14.7	2,527	13.8	2,342	13.8	2,329	13.6
Under 18	26	3.6	31	4.1	30	4.4	31	4.4
18 to 24	262	11.1	259	10.5	321	13.5	327	13.4
25 to 34	476	11.7	412	10.3	588	13.9	518	12.9
35 to 44	525	12.6	520	12.1	571	13.4	584	13.3
45 to 54	562	15.0	527	14.3	532	14.0	527	14.0
55 to 59	345	22.1	354	20.1	301	18.8	341	19.0
60 to 64	445	32.2	425	30.9

Section 2. Family Type

Analyses of the type of family in which claimants live can be produced, based mainly on whether they receive additional amounts of benefit and/or tax credits for partners or dependants. Some benefits do not have these allowances so a family type cannot be assigned in every case (Not known) - about half are thought to be single. A small proportion of the partners of these claimants also claim at least one of the key benefits in their own right.

Table 2.1 Claimants of key benefits by family type¹ and gender: May 2004

	<i>Thousands and percentages</i>					
	All	%	Men	%	Women	%
All	4,856	100	2,527	100	2,329	100
All couples	803	17	563	22	239	10
Couple - no children	328	7	263	10	65	3
Couple – children	474	10	301	12	174	7
All single	2,631	54	1,152	46	1,479	64
Single - no children	1,659	34	1,089	43	571	25
Single – children	972	20	64	3	908	39
Not known	1,422	29	812	32	611	26

- Around 2.63 million claimants were **single** or did not receive any additional benefit for a partner in May 2004.
- Just under 30% (1.45 million) of all claimants received **additional benefit or CTC for children**. The majority (0.97 million) were single.
- Comparisons over time are affected by the introduction of CTC. The changes made and the effect on the figures are described in the Methodology.

¹ This analysis is based on claimants who receive additional amounts of benefit and/or CTC for their partner and/or children and young adult dependants. See 'Methodology' at the end of this bulletin for further details.

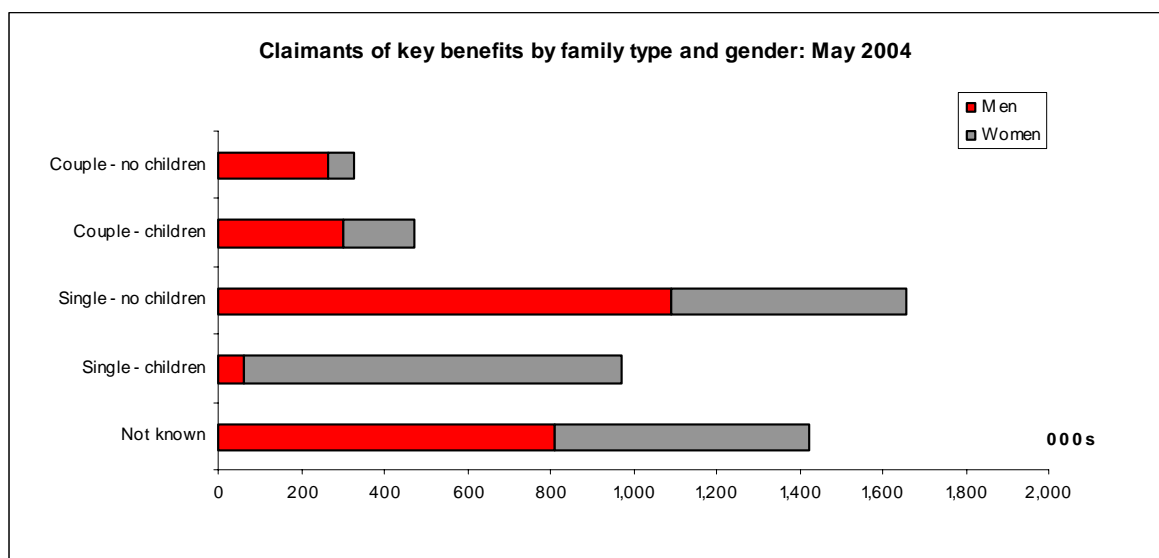


Table 2.2 Claimants of key benefits by family type¹ : May 2001 to May 2004

Thousands and percentages

	May 2001		May 2002		May 2003		May 2004	
	All	%	All	%	All	%	All	%
All	4,982	100	4,923	100	4,951	100	4,856	100
All couples	701	14	677	14	658	13	803	17
Couple - no children	385	8	379	8	370	7	328	7
Couple - children	315	6	297	6	289	6	474	10
All single	2,725	55	2,667	54	2,695	54	2,631	54
Single - no children	1,720	35	1,688	34	1,717	35	1,659	34
Single - children	1,005	20	979	20	978	20	972	20
Not known	1,556	31	1,580	32	1,598	32	1,422	29

Table 2.3 Claimants of key benefits by family type¹ and statistical group: May 2004

Thousands

	All	Unemployed	Sick / Disabled	Lone Parents	Other
All	4,856	797	3,077	788	194
All couples	803	177	564	.	62
Couple - no children	328	84	205	.	40
Couple - children	474	94	359	.	22
All single	2,631	620	1,091	788	132
Single - no children	1,659	604	926	.	129
Single - children	972	16	165	788	4
Not known	1,422	.	1,422	.	.

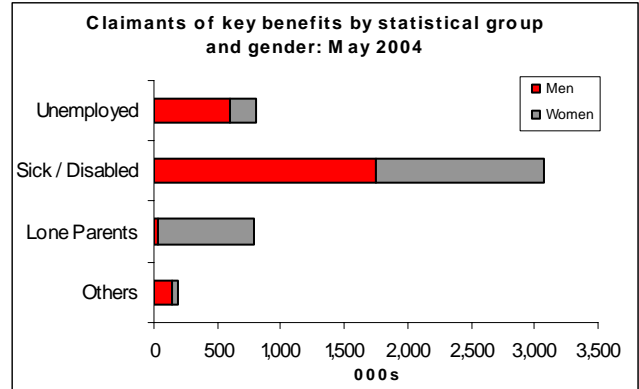
¹ This analysis is based mainly on claimants who receive additional amounts of benefit and/or CTC for their partner and/or children and young adult dependants. See 'Methodology' at the end of this bulletin for further details

Section 3. Statistical group and transitions

The claimants of these benefits can be divided into statistical groups, based mainly on the type of benefit they receive (see 'Definitions and conventions'). This gives an indication of the main reason why they are in the benefit system.

Table 3.1 Claimants of key benefits by statistical group and gender: May 2004

	<i>Thousands</i>		
	All	Men	Women
All	4,856	2,527	2,329
Unemployed	797	596	202
Sick / Disabled	3,077	1,758	1,319
Lone Parents	788	38	750
Others	194	136	58



- The **overall numbers** fell by 0.13 million between May 2001 and May 2004, mostly because of the **unemployed** group which fell by 0.13 million (down 14%) over the period.
- **Sick / disabled** claimants were consistently the largest group between May 2001 and May 2004, rising from 60% of the total to 63% of the total; **unemployed** claimants were the second largest group.
- The size of the **sick / disabled** group rose by 93 thousand (up 3%) between May 2001 and May 2004, whilst numbers in the **lone parents** and **others** groups have fallen.

Table 3.2 Claimants of key benefits by statistical group: May 2001 to May 2004

	<i>Thousands and percentages</i>							
	May 2001		May 2002		May 2003		May 2004	
	All	% of pop	All	% of pop	All	% of pop	All	% of pop
All	4,982	14.3	4,923	13.9	4,951	13.9	4,856	13.7
Unemployed	925	2.7	880	2.5	883	2.5	797	2.2
Sick / Disabled	2,984	8.6	3,011	8.5	3,052	8.6	3,077	8.7
Lone Parents	868	2.5	836	2.4	826	2.3	788	2.2
Others	205	0.6	196	0.6	190	0.5	194	0.5

These statistical group analyses show the stock of claimants on key benefits at a fixed point in time at the end of each quarter. By comparing records for the individual claimants who appear in these “snapshots” over time, the analyses can give an indication of how people move in and out of the benefit system. They can also look at how people move between benefits and/or statistical group. This methodology does not therefore cover all flows into and out of the benefit system. For example, it misses claims that start and end between “snapshot” dates and does not capture changes in benefit for couples where the partner becomes the claimant (see ‘Methodology’ at the end of this bulletin).

Table 3.3 Claimants of key benefits by status in previous year: May 2001 to May 2004

Thousands

	On benefit in current year - status in previous year ¹			Not on Benefit	Left benefit since previous year ²
	All	Same statistical group	Different statistical group		
May 2001	4,982
May 2002	4,923	3,674	260	990	1,048
May 2003	4,951	3,660	256	1,036	1,008
May 2004	4,856	3,663	251	942	1,037

¹ Some claimants may have left benefit and then returned to it between years

² Includes a small number of claimants who will have remained on benefit but reached state pension age

- The overall number of claimants of key benefits has fallen since May 2001 because the numbers who have left benefit have exceeded those who have joined. For example, 1.04 million claimants who were on benefit in May 2003 were no longer there in May 2004 - but only 0.94 million of those on benefit in May 2004 were not there in May 2003.
- Changes in the numbers in each statistical group are also affected by movements between them. For example, 251 thousand claimants who were on benefit in both May 2003 and May 2004 changed statistical group over this period.

Table 3.4 Claimants of key benefits - changes between May 2003 and May 2004

Thousands

Statistical group	All on benefit in May 2003	Movement between May 03 and May 04			Overall change ²	All on benefit in May 2004
		Not on Benefit in May 2004	Not on benefit in May 2003	Net movement between Statistical groups ¹		
All	4,951	1,037	942	0	-95	4,856
Unemployed	883	486	443	-43	-86	797
Sick / Disabled	3,052	343	327	41	25	3,077
Lone Parents	826	156	121	-3	-38	788
Others	190	51	51	4	4	194

¹ Numbers coming into statistical group less numbers moving out - see bottom half of table 3.5 for breakdown

² Overall change between May 2003 and May 2004 i.e. column 3 minus column 2 plus column 4

Table 3.5 Claimants of key benefits in both May 2003 and May 2004 - comparisons of statistical group

Thousands

Comparison of statistical groups in 2003 and 2004 ¹	Statistical group in May 2004				
	All	Unemployed	Sick / Disabled	Lone Parent	Other
All	3,914	354	2,750	667	143
Statistical group in May 2003					
Unemployed	397	293	76	12	17
Sick / Disabled	2,709	43	2,633	14	19
Lone Parents	670	9	22	634	4
Others	139	9	20	7	103
2003 and 2004					
Total with no change	3,663	293	2,633	634	103
Leaving original statistical group	-251	-104	-76	-36	-35
Joining new statistical group	251	61	117	33	40
Net movement between Statistical groups	-	-43	41	-3	4

¹ For example there were 397 thousand claimants in the Unemployed group in May 2003 who were also on benefit in May 2004:

Of these, 293 thousand were still in this group, 76 thousand were now in the Sick / Disabled group, 12 thousand in the Lone Parent group, etc.

- Both movements onto and off benefit and movements between groups can affect the numbers in individual statistical groups. For example, the overall number of **lone parents** claimants fell by 38 thousand between May 2003 and May 2004. The fall was due to the fact **that less claimants moved into this group** (33 thousand), than out of it (36 thousand), in addition more lone parents left benefit (156 thousand) than joined (121 thousand).

These analyses can also look at changes over longer time periods, as well as comparisons over the latest year. Tables 3.6 and 3.7 compare the status of the stock of claimants in May 2001 with that in May 2004.

Table 3.6 Claimants of key benefits in May 2004 - by status in May 2001

Thousands

Benefit status in May 2004	All on benefit in May 2004	Benefit status in May 2001		
		Not on Benefit	Same statistical group	Different statistical group
All	4,856	1,611	2,870	376
Unemployed	797	535	197	65
Sick / Disabled	3,077	728	2,143	206
Lone Parents	788	264	474	50
Others	194	84	56	55

- Over two thirds (3.2 million) of **claimants of key benefits** in May 2004 were also on benefit in May 2001 and 59% of the overall total (2.87 million) were in the same statistical group.
- Claimants in the **sick / disabled group** in May 2004 were the most likely to have also been on benefit in May 2001 (76% of them – 2.3 million), followed by those in the lone parent group (66% - 0.5 million) - those in the unemployed group (33% - 0.26 million) were least likely. Sick / disabled claimants were also the most likely to have stayed in the same statistical group (70% - 2.14 million).

Table 3.7 Claimants of key benefits in May 2001 - by status in May 2004

Thousands

Benefit status in May 2001	All on Benefit in May 2001	Benefit status in May 2004			
		Reached state pension age ¹	Not on benefit	Same statistical group	Different statistical group
All	4,982	465	1,272	2,870	376
Unemployed	925	13	543	197	172
Sick / Disabled	2,984	386	370	2,143	84
Lone Parents	868	2	313	474	79
Others	205	64	45	56	40

¹ Some of these claimants may also have left benefit.

Section 4. Benefit entitlement

The analyses can give an indication of the level of support that claimants receive from the benefit system. Some benefits are designed to be a claimant's main source of income. There are also benefits for special needs, such as disability, which are not linked to financial circumstances. It is also possible to see whether claimants qualified for benefit through National Insurance contributions, an income assessment or by another route. Many of those in the sick / disabled group receive more than one benefit.

Table 4.1 Claimants of key benefits by statistical group and type of benefit: May 2004

	<i>Thousands</i>			
	All	Income replacement benefits	Other benefits only	NI Credits only
All	4,856	4,337	346	173
Unemployed	797	715	.	82
Sick / Disabled	3,077	2,640	346	91
Lone Parents	788	788	.	.
Others	194	194	.	.

- 4.34 million claimants received an **income replacement benefit** in May 2004, down from 4.54 million in May 2001.
- 1.33 million people received only a **contributory benefit** in May 2004.
- 2.94 million people received a benefit that is **income related** in May 2004 (including those who also received or satisfied the qualifying conditions for a contributory benefit).

Table 4.2 Claimants of key benefits by type of benefit: May 2001 to May 2004

	<i>Thousands</i>			
	Benefit type			
All	Income replacement benefits	Other Benefits Only	NI Credits Only	
May 2001	4,982	4,540	263	179
May 2002	4,923	4,460	286	177
May 2003	4,951	4,459	317	174
May 2004	4,856	4,337	346	173

Table 4.3 Claimants of key benefits by statistical group and main basis of entitlement: May 2004

Thousands

	Basis of benefit entitlement					
	All	Contributory	Contributory and income related¹	Income related	Other	NI Credits only
All	4,856	1,325	313	2,631	414	173
Unemployed	797	137	14	565	.	82
Sick / Disabled	3,077	1,188	299	1,084	414	91
Lone Parents	788	.	.	788	.	.
Others	194	.	.	194	.	.

1 "Contributory and income related" includes JSA claimants who receive income based benefit but who also satisfy the conditions for receiving contribution-based JSA

Table 4.4 Claimants of key benefits by main basis of entitlement: May 2001 to May 2004

Thousands

	Basis of benefit entitlement					
	All	Contributory	Contributory and income related¹	Income related	Other	NI Credits only
May 2001	4,982	1,361	319	2,767	356	179
May 2002	4,923	1,370	326	2,683	367	177
May 2003	4,951	1,355	336	2,695	391	174
May 2004	4,856	1,325	313	2,631	414	173

1 "Contributory and income related" includes JSA claimants who receive income based benefit but who also satisfy the conditions for receiving contribution-based JSA

Table 4.5 Claimants of sickness / disability benefits by combinations of benefits: May 2004

	<i>Thousands</i>					
	All	Type of benefit				DLA
		IB Payment	IB Credits	SDA	Income Support	
All Sick / Disabled	3,077	1,487	909	261	1,383	1,536
Single benefit only	1,185	724	91	10	54	306
Two or more benefits of which¹	1,892	763	817	251	1,329	1,230
Incapacity Benefit payment	763	763	.	.	299	636
Incapacity Benefit credits	817	.	817	.	777	300
Severe Disablement Allowance	251	.	.	251	193	234
Income Support	1,329	299	777	193	1,329	667
Disability Living Allowance	1,230	636	300	234	667	1,230

¹ Claimants with three or more benefits in payment are counted in each combination - therefore numbers by each combination of benefit exceed the overall total

- 61% (1.89 million) of the **sick / disabled** claimants received more than one of the key benefits in May 2004 (including those who receive IB National Insurance credits). The main combinations include IB credits and IS (0.78 million), DLA and IS (0.67 million) and IB payments and DLA (0.64 million).

Table 4.6 Claimants of sickness / disability benefits by type of benefit: May 2001 to May 2004

	<i>Thousands and percentages</i>							
	May 2001		May 2002		May 2003		May 2004	
	All	%	All	%	All	%	All	%
All Sick / Disabled	2,984	100	3,011	100	3,052	100	3,077	100
Incapacity Only ¹	1,643	55	1,609	53	1,568	51	1,541	50
Incapacity and Disability	1,103	37	1,144	38	1,201	39	1,230	40
Disability Only ²	238	8	258	9	283	9	306	10

¹ Incapacity benefits include IB payments, IB credits, IS on grounds of sickness and SDA

² Disability benefit is DLA. Some of these claimants may also be working

Section 5. Duration on benefit

These analyses show the length of time for which claimants have been receiving their current benefit. In many instances this will be the same as the length of time for which they have been in the benefits system, but a significant minority may have been receiving a different benefit immediately prior to their current claim. For those who receive multiple benefits, duration is based on the one they have received for the longest time.

Table 5.1 Claimants of key benefits by statistical group and duration of claim: May 2004

Thousands

	All	Duration of oldest claim ¹				
		Under 3 months	3 to under 6 months	6 months to under 1 year	1 to under 2 years	2 years or over
All	4,856	497	344	434	540	3,040
Unemployed	797	323	171	144	90	69
Sick / Disabled	3,077	114	111	179	295	2,378
Lone Parents	788	37	42	77	126	506
Others	194	23	20	35	30	87

¹ Oldest benefit payable during current spell of benefit receipt

- 63% (3.04 million) of the **claimants of key benefits** in May 2004 had been receiving one for 2 years or more.
- Around 78% of these “longer duration” claimants (2.38 million) were in the **sick / disabled** group. This group was therefore more likely to have been on benefit for longer periods than all others - 77% had been on for 2 years or more compared with only 9% of those in the unemployed group.

Table 5.2 Claimants of key benefits by gender and duration of claim: May 2004

Thousands and percentages

		All	Duration of oldest claim ¹				
			Under 3 months	3 to under 6 months	6 months to under 1 year	1 to under 2 years	2 years or over
All	(000s)	4,856	497	344	434	540	3,040
	%	100	10	7	9	11	63
Men	(000s)	2,527	318	209	243	268	1,488
	%	100	13	8	10	11	59
Women	(000s)	2,329	179	135	191	272	1,552
	%	100	8	6	8	12	67

¹ Oldest benefit payable during current spell of benefit receipt

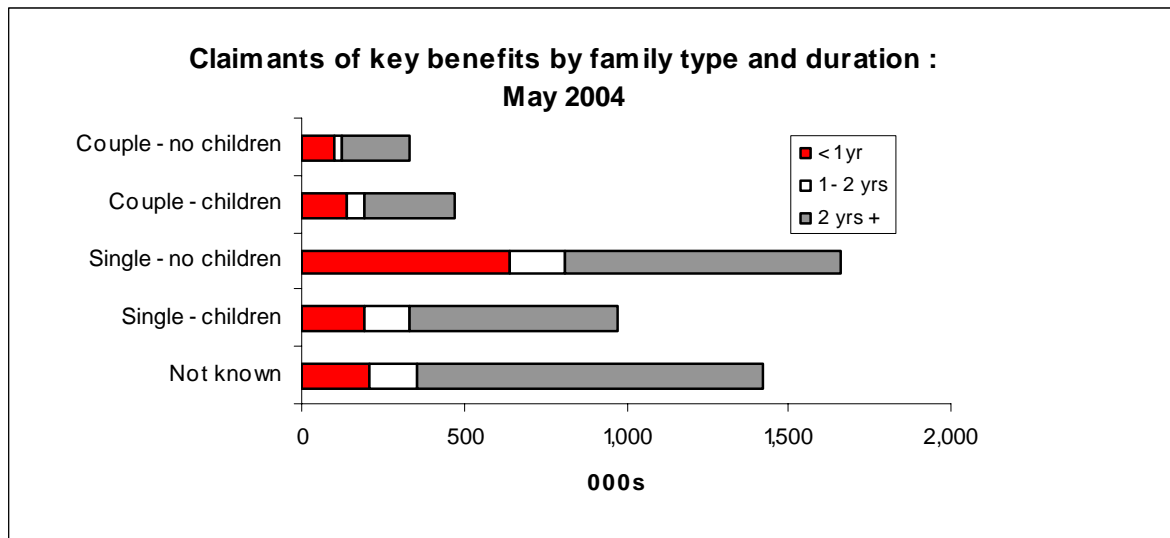
Table 5.3 Claimants of key benefits by family type and duration of claim: May 2004

Thousands

	All	Duration of oldest claim ¹				
		Under 3 months	3 to under 6 months	6 months to under 1 Year	1 to under 2 years	2 years or over
All	4,856	497	344	434	540	3,040
All couples	803	100	62	73	85	482
Couple - no children	328	44	25	28	28	204
Couple - children	474	55	38	45	58	279
All single	2,631	330	227	274	313	1,487
Single - no children	1,659	282	175	183	169	851
Single - children	972	48	52	90	145	636
Not known	1,422	67	55	88	142	1,071

¹ Oldest benefit payable during current spell of benefit receipt

- About 65% of **single people** who received additional benefit / CTC for children or young adult dependants had been on benefit for two years or more compared with only 59% of couples who did so.
- Comparisons over time are affected by the introduction of CTC. The changes made, and the effect on the figures, are described in the Methodology.



Section 6. Regional Analysis

These analyses show numbers of claimants of key benefits in each Government Office Region.

Table 6.1 Claimants of key benefits by gender and Government Office Region : May 2004

	<i>Thousands and percentages</i>					
	All		Men		Women	
	(000s)	% of pop ¹	(000s)	% of pop ¹	(000s)	% of pop ¹
Great Britain	4,845	13.6	2,521	13.7	2,325	13.6
England	3,985	13.0	2,063	13.0	1,922	13.0
North East	292	18.9	157	19.8	135	18.1
North West ²	712	17.3	377	17.8	335	16.8
Yorkshire and the Humber	439	14.4	236	15.0	203	13.8
East Midlands	319	12.3	166	12.3	153	12.3
West Midlands	464	14.4	243	14.4	222	14.3
East	325	9.8	162	9.4	163	10.3
London	694	14.2	341	13.5	352	14.9
South East	430	8.7	218	8.5	212	8.9
South West	311	10.5	164	10.6	148	10.4
Wales	322	18.4	169	18.9	153	18.0
Scotland	538	17.1	289	17.9	249	16.2
IB/SDA claimants living abroad	11	.	7	.	4	.

¹ Population of working age

² The old Merseyside GOR was merged with North West GOR on 3rd May 1999

- The proportion of the population of working age **claiming a key benefit** in May 2004 ranges from 8.7% in the South East of England to 18.9% in the North East.
- A similar pattern is revealed when the figures are broken down by statistical group. The region with the greatest proportion of the working age population claiming a key **sickness / disability benefit** is Wales (13.3%), followed by the North East (12.6%), North West (11.8%) and Scotland (11.3%). The South East (5.4%) and East of England (6.1%) have the lowest proportions.
- The proportion of the population of working age in the unemployed group ranges from 3.3% in the London to 1.6% in the South East and South West.
- For more information on regional statistics and ward level figures visit the National Statistics - Neighbourhood Statistics Website using the following URL
<http://www.neighbourhood.statistics.gov.uk/home.asp>

Table 6.2 Claimants of key benefits by statistical group and Government Office Region : May 2004

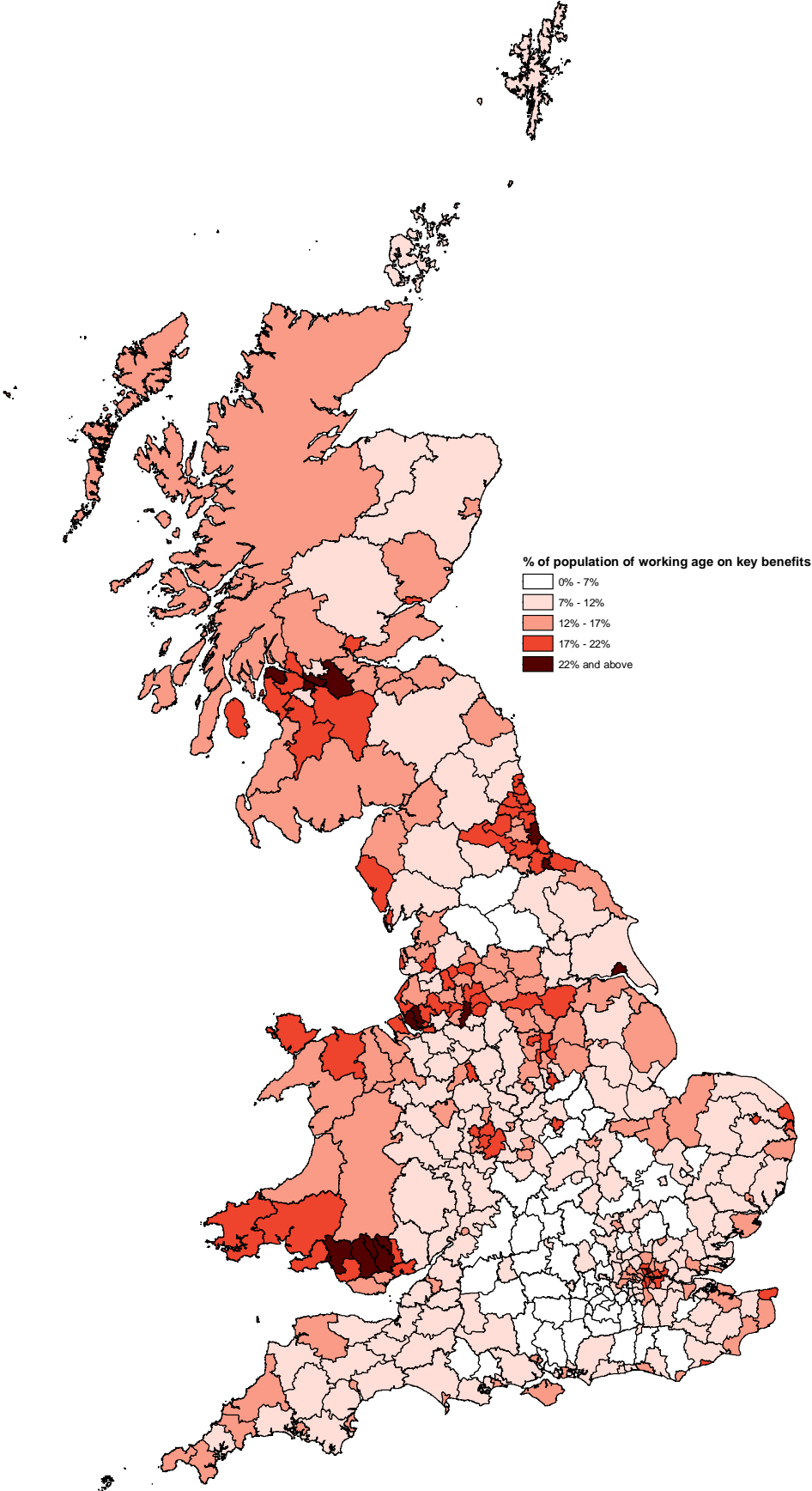
Thousands and percentages

		Statistical group				
		All	Unemployed	Sick / Disabled	Lone Parents	Others
Great Britain	(000s)	4,845	797	3,066	788	194
	% of pop ¹	13.6	2.2	8.6	2.2	0.5
England	(000s)	3,985	668	2,477	677	163
	% of pop ¹	13.0	2.2	8.1	2.2	0.5
North East	(000s)	292	44	194	41	12
	% of pop ¹	18.9	2.9	12.6	2.7	0.8
North West ²	(000s)	712	97	485	103	27
	% of pop ¹	17.3	2.4	11.8	2.5	0.6
Yorkshire and the Humber	(000s)	439	73	281	67	19
	% of pop ¹	14.4	2.4	9.2	2.2	0.6
East Midlands	(000s)	319	51	208	48	13
	% of pop ¹	12.3	1.9	8.0	1.8	0.5
West Midlands	(000s)	464	85	282	77	21
	% of pop ¹	14.4	2.6	8.7	2.4	0.6
East	(000s)	325	52	202	58	13
	% of pop ¹	9.8	1.6	6.1	1.8	0.4
London	(000s)	694	159	346	158	31
	% of pop ¹	14.2	3.3	7.1	3.2	0.6
South East	(000s)	430	67	268	78	17
	% of pop ¹	8.7	1.4	5.4	1.6	0.3
South West	(000s)	311	40	212	47	12
	% of pop ¹	10.5	1.4	7.2	1.6	0.4
Wales	(000s)	322	38	232	42	10
	% of pop ¹	18.4	2.2	13.3	2.4	0.6
Scotland	(000s)	538	91	358	69	21
	% of pop ¹	17.1	2.9	11.3	2.2	0.7
IB/SDA claimants living abroad	(000s)	11	.	11	.	.

¹ Population of working age

² The old Merseyside GOR was merged with North West GOR on 3rd November 1998

Percentage of the population of working age claiming a key benefit by Local Authority: May 2004



These figures are not seasonally adjusted. Any comparisons should be made "year on year".

Section 7. Quarterly Tables

7.1: Age and Gender

Table 7.1A: Claimants of key benefits by gender

		<i>Thousands and percentages</i>					
		All		Men		Women	
		% Pop¹	% Pop¹	% Pop¹	% Pop¹	% Pop¹	% Pop¹
1995	May	6,244	17.9	3,652	20.6	2,592	15.6
	Aug	6,322	18.1	3,645	20.5	2,677	16.2
	Nov	6,213	18.1	3,588	20.2	2,625	15.8
1996	Feb	6,317	18.4	3,668	20.6	2,649	15.9
	May	6,169	17.9	3,549	20.0	2,620	15.7
	Aug	6,218	18.1	3,533	19.9	2,685	16.1
	Nov	5,866	17.0	3,305	18.6	2,561	15.4
1997	Feb	5,850	17.0	3,302	18.5	2,549	15.3
	May	5,659	16.4	3,157	17.7	2,502	15.0
	Aug	5,665	16.4	3,126	17.6	2,539	15.2
	Nov	5,409	15.7	2,963	16.6	2,446	14.6
1998	Feb	5,429	15.7	2,982	16.7	2,447	14.6
	May	5,331	15.4	2,914	16.3	2,417	14.4
	Aug	5,355	15.5	2,903	16.3	2,452	14.6
	Nov	5,249	15.2	2,853	16.0	2,396	14.3
1999	Feb	5,328	15.3	2,912	16.3	2,416	14.4
	May	5,235	15.1	2,846	15.9	2,389	14.2
	Aug	5,245	15.1	2,822	15.8	2,423	14.4
	Nov	5,143	14.8	2,758	15.4	2,385	14.2
2000	Feb	5,185	14.9	2,802	15.6	2,383	14.1
	May	5,049	14.5	2,703	15.0	2,346	13.9
	Aug	5,063	14.5	2,688	15.0	2,374	14.0
	Nov	4,996	14.3	2,659	14.8	2,336	13.8
2001	Feb	5,077	14.4	2,719	14.9	2,358	13.8
	May	4,982	14.1	2,640	14.4	2,342	13.7
	Aug	4,970	14.1	2,609	14.3	2,361	13.9
	Nov	4,907	13.9	2,583	14.1	2,325	13.6
2002	Feb	4,992	14.1	2,650	14.4	2,342	13.7
	May	4,923	13.9	2,592	14.1	2,332	13.6
	Aug	4,947	13.9	2,584	14.1	2,362	13.8
	Nov	4,896	13.8	2,561	13.9	2,335	13.6
2003	Feb	4,992	14.1	2,634	14.3	2,358	13.8
	May	4,951	13.9	2,591	14.1	2,359	13.8
	Aug	4,945	13.9	2,569	14.0	2,376	13.9
	Nov	4,878	13.7	2,541	13.8	2,337	13.6
2004	Feb	4,947	13.9	2,593	14.1	2,354	13.7
	May	4,856	13.7	2,527	13.8	2,329	13.6

¹ Population of working age

Table 7.1B: Claimants of key benefits by gender - Annual changes May 2000 to May 2004

		<i>Thousands and percentages</i>					
		All		Men		Women	
		(000s)	%	(000s)	%	(000s)	%
May 01 / May 00		-67	-1.3	-62	-2.3	-4	-0.2
May 02 / May 01		-59	-1.2	-48	-1.8	-10	-0.4
May 03 / May 02		27	0.6	0	0.0	28	1.2
May 04 / May 03		-95	-1.9	-64	-2.5	-31	-1.3

Table 7.1C: All Claimants of key benefits by age

		<i>Thousands</i>							
		All	Under 18	18 to 24	25 to 34	35 to 44	45 to 54	55 to 59	60 to 64
1995	May	6,244	54	993	1,614	1,177	1,198	703	506
	Aug	6,322	55	1,046	1,622	1,186	1,201	704	507
	Nov	6,213	57	970	1,595	1,176	1,203	705	507
1996	Feb	6,317	59	981	1,629	1,204	1,225	714	505
	May	6,169	58	917	1,583	1,188	1,218	703	502
	Aug	6,218	58	966	1,576	1,197	1,222	697	501
	Nov	5,866	57	827	1,468	1,145	1,185	689	496
1997	Feb	5,850	59	823	1,456	1,151	1,184	686	492
	May	5,659	58	760	1,394	1,126	1,164	672	486
	Aug	5,665	58	791	1,387	1,125	1,156	664	484
	Nov	5,409	55	700	1,304	1,084	1,131	655	481
1998	Feb	5,429	57	710	1,306	1,093	1,135	650	477
	May	5,331	56	674	1,268	1,084	1,127	648	475
	Aug	5,355	55	700	1,263	1,089	1,129	647	472
	Nov	5,249	55	639	1,231	1,084	1,119	648	472
1999	Feb	5,328	59	662	1,245	1,109	1,136	647	469
	May	5,235	58	628	1,212	1,098	1,122	647	470
	Aug	5,245	58	656	1,201	1,101	1,117	645	467
	Nov	5,143	56	612	1,168	1,092	1,105	646	464
2000	Feb	5,185	56	629	1,166	1,107	1,115	650	461
	May	5,049	54	588	1,121	1,089	1,101	642	455
	Aug	5,063	54	612	1,113	1,091	1,098	640	455
	Nov	4,996	54	582	1,084	1,089	1,090	643	453
2001	Feb	5,077	56	613	1,094	1,110	1,104	647	453
	May	4,982	56	582	1,063	1,096	1,093	646	445
	Aug	4,970	55	592	1,050	1,098	1,082	651	442
	Nov	4,907	53	568	1,023	1,093	1,074	656	440
2002	Feb	4,992	56	600	1,035	1,113	1,080	669	438
	May	4,923	55	575	1,012	1,103	1,069	675	434
	Aug	4,947	54	599	1,010	1,108	1,062	682	431
	Nov	4,896	57	574	992	1,100	1,057	688	428
2003	Feb	4,992	60	614	1,005	1,119	1,069	696	428
	May	4,951	61	597	992	1,119	1,063	694	425
	Aug	4,945	61	616	982	1,115	1,055	693	422
	Nov	4,878	60	589	951	1,107	1,055	695	422
2004	Feb	4,947	63	617	961	1,119	1,064	702	421
	May	4,856	62	586	930	1,104	1,054	695	425

Table 7.1D: All Claimants of key benefits by age

		<i>Percentages</i>							
		All	<i>Under 18</i>	<i>18 to 24</i>	<i>25 to 34</i>	<i>35 to 44</i>	<i>45 to 54</i>	<i>55 to 59</i>	<i>60 to 64</i>
1995	May	100	1	16	26	19	19	11	8
	Aug	100	1	17	26	19	19	11	8
	Nov	100	1	16	26	19	19	11	8
1996	Feb	100	1	16	26	19	19	11	8
	May	100	1	15	26	19	20	11	8
	Aug	100	1	16	25	19	20	11	8
	Nov	100	1	14	25	20	20	12	8
1997	Feb	100	1	14	25	20	20	12	8
	May	100	1	13	25	20	21	12	9
	Aug	100	1	14	24	20	20	12	9
	Nov	100	1	13	24	20	21	12	9
1998	Feb	100	1	13	24	20	21	12	9
	May	100	1	13	24	20	21	12	9
	Aug	100	1	13	24	20	21	12	9
	Nov	100	1	12	23	21	21	12	9
1999	Feb	100	1	12	23	21	21	12	9
	May	100	1	12	23	21	21	12	9
	Aug	100	1	13	23	21	21	12	9
	Nov	100	1	12	23	21	21	13	9
2000	Feb	100	1	12	22	21	22	13	9
	May	100	1	12	22	22	22	13	9
	Aug	100	1	12	22	22	22	13	9
	Nov	100	1	12	22	22	22	13	9
2001	Feb	100	1	12	22	22	22	13	9
	May	100	1	12	21	22	22	13	9
	Aug	100	1	12	21	22	22	13	9
	Nov	100	1	12	21	22	22	13	9
2002	Feb	100	1	12	21	22	22	13	9
	May	100	1	12	21	22	22	14	9
	Aug	100	1	12	20	22	21	14	9
	Nov	100	1	12	20	22	22	14	9
2003	Feb	100	1	12	20	22	21	14	9
	May	100	1	12	20	23	21	14	9
	Aug	100	1	12	20	23	21	14	9
	Nov	100	1	12	19	23	22	14	9
2004	Feb	100	1	12	19	23	22	14	9
	May	100	1	12	19	23	22	14	9

Table 7.1E: Male Claimants of key benefits by age

		<i>Thousands</i>							
		All	Under 18	18 to 24	25 to 34	35 to 44	45 to 54	55 to 59	60 to 64
1995	May	3,652	24	521	829	647	697	430	506
	Aug	3,645	23	543	819	641	686	425	507
	Nov	3,588	24	501	805	637	690	425	507
1996	Feb	3,668	26	514	832	659	703	430	505
	May	3,549	25	476	794	641	692	419	502
	Aug	3,533	25	496	783	633	685	411	501
	Nov	3,305	23	412	713	599	659	403	496
1997	Feb	3,302	25	415	709	602	658	401	492
	May	3,157	25	374	667	577	640	387	486
	Aug	3,126	25	384	655	570	629	379	484
	Nov	2,963	24	331	603	542	610	372	481
1998	Feb	2,982	26	342	610	548	611	369	477
	May	2,914	25	322	584	541	604	364	475
	Aug	2,903	24	332	580	536	598	361	472
	Nov	2,853	24	299	565	537	595	362	472
1999	Feb	2,912	26	317	581	553	604	362	469
	May	2,846	26	294	558	544	594	359	470
	Aug	2,822	25	304	547	539	586	355	467
	Nov	2,758	24	277	528	532	579	355	464
2000	Feb	2,802	25	294	534	543	587	358	461
	May	2,703	24	267	505	527	574	352	455
	Aug	2,688	24	273	497	523	568	348	455
	Nov	2,659	24	260	486	525	563	348	453
2001	Feb	2,719	27	285	497	537	570	349	453
	May	2,640	26	262	476	525	562	345	445
	Aug	2,609	25	262	462	521	552	345	442
	Nov	2,583	24	253	452	520	547	347	440
2002	Feb	2,650	26	278	466	534	552	355	438
	May	2,592	26	257	451	525	543	357	434
	Aug	2,584	25	266	446	523	536	357	431
	Nov	2,561	26	253	440	522	532	360	428
2003	Feb	2,634	28	282	455	536	541	365	428
	May	2,591	28	266	443	532	535	362	425
	Aug	2,569	29	272	436	525	528	359	422
	Nov	2,541	28	261	421	524	528	356	422
2004	Feb	2,593	30	283	432	532	534	361	421
	May	2,527	31	259	412	520	527	354	425

Table 7.1F: Female Claimants of key benefits by age

		<i>Thousands</i>							
		All	Under 18	18 to 24	25 to 34	35 to 44	45 to 54	55 to 59	60 to 64
1995	May	2,592	31	472	785	530	501	273	-
	Aug	2,677	32	503	804	545	515	279	-
	Nov	2,625	33	470	791	539	514	280	-
1996	Feb	2,649	33	467	797	545	522	284	-
	May	2,620	33	440	789	547	526	285	-
	Aug	2,685	33	470	793	565	538	286	-
	Nov	2,561	34	414	754	547	526	286	-
1997	Feb	2,549	33	408	747	549	526	285	-
	May	2,502	32	386	728	548	524	285	-
	Aug	2,539	32	408	733	555	528	285	-
	Nov	2,446	30	369	701	542	521	283	-
1998	Feb	2,447	31	368	697	546	524	281	-
	May	2,417	31	352	684	543	524	284	-
	Aug	2,452	31	368	683	553	531	287	-
	Nov	2,396	31	340	666	547	524	287	-
1999	Feb	2,416	33	345	664	556	532	286	-
	May	2,389	33	333	654	553	528	288	-
	Aug	2,423	33	352	654	563	531	290	-
	Nov	2,385	32	335	640	560	526	291	-
2000	Feb	2,383	31	335	632	564	528	292	-
	May	2,346	30	321	616	562	527	290	-
	Aug	2,374	30	338	616	568	530	292	-
	Nov	2,336	30	322	598	564	527	295	-
2001	Feb	2,358	30	328	597	573	533	298	-
	May	2,342	30	321	588	571	532	301	-
	Aug	2,361	30	331	587	577	530	305	-
	Nov	2,325	29	315	571	573	527	309	-
2002	Feb	2,342	30	322	569	579	528	314	-
	May	2,332	30	318	562	578	526	319	-
	Aug	2,362	29	333	564	585	526	325	-
	Nov	2,335	31	321	551	578	525	328	-
2003	Feb	2,358	33	331	550	583	529	331	-
	May	2,359	33	331	549	587	528	332	-
	Aug	2,376	32	345	546	591	527	335	-
	Nov	2,337	32	328	530	583	526	339	-
2004	Feb	2,354	33	334	529	587	530	341	-
	May	2,329	31	327	518	584	527	341	-

7.2: Family Type

Comparisons over time are affected by the introduction of CTC. The changes made, and the effect on the figures, are described in the Methodology.

Table 7.2A: All Claimants of key benefits by family type¹

		<i>Thousands</i>							
		Couples				Single			Not Known
		All	No Children	With Children	All	No Children	With Children		
1995	May	6,244	1,300	770	530	3,510	2,392	1,118	1,434
	Aug	6,322	1,283	772	511	3,582	2,450	1,131	1,457
	Nov	6,213	1,247	740	507	3,508	2,381	1,127	1,458
1996	Feb	6,317	1,274	759	515	3,583	2,454	1,128	1,461
	May	6,169	1,218	721	496	3,487	2,356	1,130	1,465
	Aug	6,218	1,195	716	479	3,551	2,417	1,134	1,472
1997	Nov	5,866	1,083	635	448	3,298	2,186	1,112	1,486
	Feb	5,850	1,068	611	458	3,288	2,173	1,115	1,494
	May	5,659	999	564	435	3,171	2,060	1,110	1,489
1998	Aug	5,665	972	563	409	3,201	2,091	1,110	1,492
	Nov	5,409	917	519	398	2,993	1,915	1,078	1,500
	Feb	5,429	915	517	398	3,013	1,943	1,070	1,501
1999	May	5,331	881	497	385	2,947	1,886	1,061	1,503
	Aug	5,355	876	497	379	2,974	1,917	1,057	1,505
	Nov	5,249	851	482	369	2,887	1,847	1,040	1,511
2000	Feb	5,328	860	485	375	2,963	1,918	1,045	1,505
	May	5,235	828	464	364	2,894	1,851	1,043	1,513
	Aug	5,245	809	452	357	2,919	1,868	1,051	1,517
2001	Nov	5,143	783	438	345	2,836	1,798	1,038	1,523
	Feb	5,185	795	448	347	2,865	1,835	1,030	1,524
	May	5,049	752	420	332	2,773	1,751	1,023	1,523
2002	Aug	5,063	739	410	329	2,794	1,767	1,026	1,530
	Nov	4,996	725	403	322	2,728	1,720	1,008	1,543
	Feb	5,077	740	413	328	2,791	1,781	1,010	1,546
2003	May	4,982	701	385	315	2,725	1,720	1,005	1,556
	Aug	4,970	684	376	308	2,725	1,714	1,011	1,560
	Nov	4,907	685	387	298	2,664	1,680	983	1,559
2004	Feb	4,992	699	396	304	2,734	1,753	981	1,559
	May	4,923	677	379	297	2,667	1,688	979	1,580
	Aug	4,947	667	374	293	2,698	1,711	986	1,582
2005	Nov	4,896	655	370	286	2,647	1,679	968	1,594
	Feb	4,992	673	382	291	2,724	1,759	965	1,595
	May	4,951	658	370	289	2,695	1,717	978	1,598
2006	Aug	4,945	813	338	475	2,718	1,718	1,001	1,414
	Nov	4,878	805	334	472	2,656	1,682	974	1,418
2007	Feb	4,947	816	340	476	2,718	1,740	979	1,413
	May	4,856	803	328	474	2,631	1,659	972	1,422

¹ This analysis is based mainly on claimants who receive additional amounts of benefit and/or CTC for their partner and/or children and young adult dependants. See notes on 'Methodology', at the end of this bulletin for further details

Table 7.2B: Male Claimants of key benefits by family type¹

Thousands

		All	Couples		Single			Not known	
			All	No Children	With Children	All	No Children		With Children
1995	May	3,652	1,125	633	492	1,715	1,646	70	812
	Aug	3,645	1,094	620	473	1,727	1,657	70	824
	Nov	3,588	1,075	608	467	1,691	1,621	70	822
1996	Feb	3,668	1,094	620	473	1,753	1,683	70	822
	May	3,549	1,044	590	455	1,682	1,613	70	822
	Aug	3,533	1,009	572	437	1,700	1,630	70	824
	Nov	3,305	930	523	407	1,545	1,475	70	830
1997	Feb	3,302	922	506	416	1,546	1,476	70	834
	May	3,157	865	472	393	1,466	1,396	70	826
	Aug	3,126	831	465	366	1,467	1,399	68	827
	Nov	2,963	789	435	354	1,345	1,279	66	829
1998	Feb	2,982	781	428	353	1,372	1,306	65	830
	May	2,914	753	412	341	1,333	1,267	65	828
	Aug	2,903	735	400	335	1,339	1,276	64	829
	Nov	2,853	723	398	325	1,297	1,236	62	833
1999	Feb	2,912	729	400	329	1,355	1,292	63	829
	May	2,846	702	384	318	1,309	1,246	63	835
	Aug	2,822	681	371	310	1,306	1,243	63	835
	Nov	2,758	664	364	299	1,256	1,193	63	838
2000	Feb	2,802	669	369	301	1,294	1,232	62	839
	May	2,703	634	348	285	1,233	1,171	62	836
	Aug	2,688	619	338	281	1,229	1,166	63	840
	Nov	2,659	609	335	274	1,202	1,140	62	848
2001	Feb	2,719	618	340	278	1,250	1,188	62	851
	May	2,640	585	318	267	1,203	1,141	62	853
	Aug	2,609	567	307	260	1,187	1,125	62	855
	Nov	2,583	566	317	249	1,165	1,105	60	852
2002	Feb	2,650	574	320	254	1,224	1,165	60	851
	May	2,592	554	308	246	1,176	1,116	60	861
	Aug	2,584	541	300	242	1,182	1,122	60	861
	Nov	2,561	533	298	234	1,161	1,102	60	868
2003	Feb	2,634	542	303	239	1,225	1,165	60	867
	May	2,591	529	294	236	1,192	1,131	60	871
	Aug	2,569	579	271	307	1,188	1,123	65	803
	Nov	2,541	570	269	301	1,166	1,103	63	806
2004	Feb	2,593	577	272	305	1,214	1,150	64	803
	May	2,527	563	263	301	1,152	1,089	64	812

¹ This analysis is based mainly on claimants who receive additional amounts of benefit and/or CTC for their partner and/or children and young adult dependants. See notes on 'Methodology', at the end of this bulletin for further details

Table 7.2C: Female Claimants of key benefits by family type¹

Thousands

		Couples				Single			Not known
		All	No Children	With Children	All	No Children	With Children		
1995	May	2,592	175	137	38	1,795	747	1,048	622
	Aug	2,677	190	151	38	1,854	793	1,061	633
	Nov	2,625	172	132	40	1,817	760	1,057	635
1996	Feb	2,649	180	139	41	1,830	772	1,058	639
	May	2,620	173	132	41	1,804	743	1,061	642
	Aug	2,685	186	144	42	1,851	787	1,064	648
	Nov	2,561	153	112	41	1,753	711	1,042	656
1997	Feb	2,549	147	105	42	1,742	697	1,045	660
	May	2,502	135	92	42	1,705	665	1,040	663
	Aug	2,539	141	98	43	1,734	692	1,042	665
	Nov	2,446	128	84	44	1,648	636	1,012	671
1998	Feb	2,447	134	90	44	1,641	636	1,005	671
	May	2,417	128	84	44	1,615	619	996	674
	Aug	2,452	141	97	44	1,635	641	993	676
	Nov	2,396	128	83	45	1,590	612	978	678
1999	Feb	2,416	131	85	46	1,609	626	983	676
	May	2,389	126	80	46	1,585	605	980	678
	Aug	2,423	128	81	47	1,613	626	987	681
	Nov	2,385	120	74	46	1,580	604	976	685
2000	Feb	2,383	126	79	47	1,571	603	968	686
	May	2,346	118	71	47	1,541	580	961	687
	Aug	2,374	120	72	48	1,565	602	963	690
	Nov	2,336	116	67	49	1,526	580	946	695
2001	Feb	2,358	122	73	49	1,541	593	948	695
	May	2,342	116	67	49	1,522	579	943	703
	Aug	2,361	117	69	48	1,538	589	949	706
	Nov	2,325	119	70	49	1,499	575	924	707
2002	Feb	2,342	125	75	50	1,509	588	921	708
	May	2,332	122	71	51	1,490	571	919	719
	Aug	2,362	125	74	51	1,516	590	926	721
	Nov	2,335	123	71	51	1,486	578	908	727
2003	Feb	2,358	131	79	52	1,499	593	906	728
	May	2,359	129	76	53	1,503	585	918	728
	Aug	2,376	234	66	168	1,531	595	935	611
	Nov	2,337	236	65	171	1,490	579	911	612
2004	Feb	2,354	239	68	171	1,504	590	914	610
	May	2,329	239	65	174	1,479	571	908	611

¹ This analysis is based mainly on claimants who receive additional amounts of benefit and/or CTC for their partner and/or children and young adult dependants. See notes on 'Methodology', at the end of this bulletin for further details

7.3: Statistical group

Table 7.3A: All Claimants of key benefits by statistical group

Thousands

		All	Unemployed	Sick / Disabled	Lone Parents	Others ¹
1995	May	6,244	2,219	2,662	1,020	344
	Aug	6,322	2,258	2,702	1,029	332
	Nov	6,213	2,117	2,719	1,026	351
1996	Feb	6,317	2,222	2,728	1,025	342
	May	6,169	2,069	2,740	1,024	337
	Aug	6,218	2,099	2,758	1,025	336
	Nov	5,866	1,784	2,784	1,002	298
1997	Feb	5,850	1,755	2,801	1,001	293
	May	5,659	1,574	2,809	993	283
	Aug	5,665	1,565	2,828	991	281
	Nov	5,409	1,320	2,854	963	273
1998	Feb	5,429	1,363	2,849	953	264
	May	5,331	1,293	2,841	941	257
	Aug	5,355	1,320	2,844	935	256
	Nov	5,249	1,223	2,853	920	253
1999	Feb	5,328	1,303	2,855	920	250
	May	5,235	1,208	2,865	917	246
	Aug	5,245	1,200	2,879	920	245
	Nov	5,143	1,096	2,893	909	244
2000	Feb	5,185	1,151	2,895	900	240
	May	5,049	1,024	2,902	891	232
	Aug	5,063	1,023	2,926	889	225
	Nov	4,996	954	2,954	874	214
2001	Feb	5,077	1,026	2,968	875	208
	May	4,982	925	2,984	868	205
	Aug	4,970	895	3,000	871	203
	Nov	4,907	853	3,008	845	201
2002	Feb	4,992	946	3,009	840	197
	May	4,923	880	3,011	836	196
	Aug	4,947	889	3,023	839	195
	Nov	4,896	836	3,044	823	194
2003	Feb	4,992	936	3,049	817	191
	May	4,951	883	3,052	826	190
	Aug	4,945	867	3,063	823	192
	Nov	4,878	816	3,074	798	190
2004	Feb	4,947	884	3,072	798	193
	May	4,856	797	3,077	788	194

Table 7.3B: Claimants of key benefits by statistical group - Annual changes May 2000 to May 2004

Thousands

	All	Unemployed	Sick / Disabled	Lone Parents	Others ¹
May 01 / May 00	-67	-99	82	-23	-27
May 02 / May 01	-59	-45	27	-32	-9
May 03 / May 02	27	3	41	-10	-6
May 04 / May 03	-95	-86	25	-38	4

¹ Prior to the introduction of JSA in October 1996, the "others" group includes IS claimants who were on Government Training schemes. See notes on 'Methodology', at the end of this bulletin for further details

Table 7.3C: Male Claimants of key benefits by statistical group*Thousands*

		All	Unemployed	Sick / Disabled	Lone Parents	Others ¹
1995	May	3,652	1,701	1,640	54	257
	Aug	3,645	1,684	1,659	54	248
	Nov	3,588	1,610	1,664	54	260
1996	Feb	3,668	1,696	1,665	54	254
	May	3,549	1,582	1,664	54	249
	Aug	3,533	1,560	1,670	54	249
	Nov	3,305	1,354	1,681	53	217
1997	Feb	3,302	1,344	1,690	53	215
	May	3,157	1,210	1,687	52	208
	Aug	3,126	1,174	1,696	51	205
	Nov	2,963	1,006	1,709	49	200
1998	Feb	2,982	1,039	1,701	48	194
	May	2,914	987	1,690	48	190
	Aug	2,903	982	1,687	47	188
	Nov	2,853	933	1,689	45	187
1999	Feb	2,912	996	1,686	45	185
	May	2,846	928	1,692	45	180
	Aug	2,822	901	1,697	45	180
	Nov	2,758	832	1,702	44	180
2000	Feb	2,802	880	1,702	43	177
	May	2,703	785	1,702	43	173
	Aug	2,688	765	1,713	43	167
	Nov	2,659	730	1,729	43	158
2001	Feb	2,719	785	1,737	43	154
	May	2,640	707	1,741	43	149
	Aug	2,609	670	1,748	44	148
	Nov	2,583	646	1,749	42	146
2002	Feb	2,650	719	1,748	41	142
	May	2,592	667	1,743	41	141
	Aug	2,584	662	1,744	41	138
	Nov	2,561	630	1,753	41	138
2003	Feb	2,634	706	1,753	40	135
	May	2,591	662	1,755	40	134
	Aug	2,569	638	1,756	40	134
	Nov	2,541	610	1,758	39	134
2004	Feb	2,593	664	1,756	39	134
	May	2,527	596	1,758	38	136

¹ Prior to the introduction of JSA in October 1996, the "others" group includes IS claimants who were on Government Training schemes. See notes on 'Methodology', at the end of this bulletin for further details

Table 7.3D: Female Claimants of key benefits by statistical group*Thousands*

		All	Unemployed	Sick / Disabled	Lone Parents	Others ¹
1995	May	2,592	517	1,021	966	87
	Aug	2,677	574	1,043	975	84
	Nov	2,625	507	1,055	972	91
1996	Feb	2,649	526	1,063	971	89
	May	2,620	487	1,076	970	88
	Aug	2,685	539	1,088	971	87
	Nov	2,561	430	1,102	948	81
1997	Feb	2,549	411	1,111	947	79
	May	2,502	364	1,122	941	75
	Aug	2,539	391	1,133	941	76
	Nov	2,446	314	1,145	914	73
1998	Feb	2,447	325	1,147	905	70
	May	2,417	306	1,151	893	67
	Aug	2,452	338	1,157	889	68
	Nov	2,396	290	1,164	874	67
1999	Feb	2,416	307	1,169	875	65
	May	2,389	280	1,173	871	65
	Aug	2,423	300	1,183	875	65
	Nov	2,385	264	1,191	866	65
2000	Feb	2,383	271	1,193	857	63
	May	2,346	239	1,200	848	59
	Aug	2,374	258	1,212	846	59
	Nov	2,336	224	1,225	831	56
2001	Feb	2,358	241	1,231	832	54
	May	2,342	218	1,243	824	56
	Aug	2,361	225	1,253	827	56
	Nov	2,325	207	1,259	803	55
2002	Feb	2,342	227	1,262	799	55
	May	2,332	213	1,268	796	55
	Aug	2,362	228	1,279	799	57
	Nov	2,335	206	1,291	782	56
2003	Feb	2,358	230	1,296	776	55
	May	2,359	221	1,297	786	56
	Aug	2,376	229	1,306	783	58
	Nov	2,337	206	1,316	759	56
2004	Feb	2,354	220	1,316	760	59
	May	2,329	202	1,319	750	58

¹ Prior to the introduction of JSA in October 1996, the "others" group includes IS claimants who were on Government Training schemes. See notes on 'Methodology', at the end of this bulletin for further details

7.4: Benefit entitlement

Table 7.4A: Claimants of key benefits by type of benefit

Thousands

		All	Income replacement benefits	Other benefits	NI Credits only
1995	May	6,244	5,768	177	300
	Aug	6,322	5,831	176	315
	Nov	6,213	5,746	182	285
1996	Feb	6,317	5,835	188	295
	May	6,169	5,707	189	273
	Aug	6,218	5,732	192	295
	Nov	5,866	5,441	199	226
1997	Feb	5,850	5,421	205	224
	May	5,659	5,230	207	222
	Aug	5,665	5,234	212	220
	Nov	5,409	4,999	216	195
1998	Feb	5,429	5,017	222	190
	May	5,331	4,922	224	185
	Aug	5,355	4,939	226	190
	Nov	5,249	4,827	228	194
1999	Feb	5,328	4,894	234	201
	May	5,235	4,809	232	194
	Aug	5,245	4,818	235	191
	Nov	5,143	4,714	240	189
2000	Feb	5,185	4,755	241	189
	May	5,049	4,633	244	172
	Aug	5,063	4,639	249	175
	Nov	4,996	4,565	254	177
2001	Feb	5,077	4,643	254	180
	May	4,982	4,540	263	179
	Aug	4,970	4,526	267	176
	Nov	4,907	4,455	275	178
2002	Feb	4,992	4,533	280	180
	May	4,923	4,460	286	177
	Aug	4,947	4,480	291	176
	Nov	4,896	4,417	307	172
2003	Feb	4,992	4,502	312	178
	May	4,951	4,459	317	174
	Aug	4,945	4,448	324	173
	Nov	4,878	4,367	333	179
2004	Feb	4,947	4,431	337	179
	May	4,856	4,337	346	173

Table 7.4B: Claimants of key benefits by main basis of entitlement

Thousands

		Basis of benefit entitlement					
		All	Contributory	Contributory and income related ¹	Income related	Other	NI Credits only
1995	May	6,244	1,624	354	3,695	271	300
	Aug	6,322	1,649	355	3,732	271	315
	Nov	6,213	1,610	356	3,684	279	285
1996	Feb	6,317	1,633	374	3,730	286	295
	May	6,169	1,666	299	3,643	287	273
	Aug	6,218	1,669	298	3,666	290	295
	Nov	5,866	1,605	293	3,442	299	226
1997	Feb	5,850	1,559	298	3,463	306	224
	May	5,659	1,484	289	3,356	307	222
	Aug	5,665	1,475	294	3,363	313	220
	Nov	5,409	1,442	299	3,158	317	195
1998	Feb	5,429	1,454	300	3,163	322	190
	May	5,331	1,423	292	3,107	324	185
	Aug	5,355	1,429	291	3,119	326	190
	Nov	5,249	1,408	295	3,022	329	194
1999	Feb	5,328	1,417	301	3,074	334	201
	May	5,235	1,400	293	3,016	332	194
	Aug	5,245	1,400	292	3,029	333	191
	Nov	5,143	1,373	292	2,951	337	189
2000	Feb	5,185	1,399	295	2,965	337	189
	May	5,049	1,366	296	2,876	340	172
	Aug	5,063	1,363	303	2,878	343	175
	Nov	4,996	1,355	309	2,808	347	177
2001	Feb	5,077	1,388	317	2,845	348	180
	May	4,982	1,361	319	2,767	356	179
	Aug	4,970	1,354	322	2,758	359	176
	Nov	4,907	1,346	325	2,695	364	178
2002	Feb	4,992	1,377	330	2,739	367	180
	May	4,923	1,370	326	2,683	367	177
	Aug	4,947	1,367	328	2,706	369	176
	Nov	4,896	1,349	332	2,659	385	172
2003	Feb	4,992	1,379	336	2,712	388	178
	May	4,951	1,355	336	2,695	391	174
	Aug	4,945	1,344	335	2,697	395	173
	Nov	4,878	1,333	330	2,634	404	179
2004	Feb	4,947	1,347	330	2,684	406	179
	May	4,856	1,325	313	2,631	414	173

¹ "Contributory and income related" includes JSA claimants who receive income based benefit, but who also satisfy the conditions for receiving contribution-based JSA

7.5: Duration of benefit¹

**Table 7.5A Claimants of key benefits by duration of claim of oldest benefit:²
May 1997 – May 2004**

Thousands

		All	Under 3 months	3 to 6 months	6 to under 12 months	1 to under 2 years	2 years or over
1997	May	5,659	742	466	586	726	3,140
	Aug	5,665	792	454	575	694	3,149
	Nov	5,409	720	450	538	633	3,069
1998	Feb	5,429	712	474	574	638	3,030
	May	5,331	633	428	593	658	3,019
	Aug	5,355	722	399	553	682	2,999
	Nov	5,249	704	401	491	672	2,981
1999	Feb	5,328	728	459	509	661	2,971
	May	5,235	650	421	541	640	2,983
	Aug	5,245	699	407	523	624	2,991
	Nov	5,143	661	395	490	605	2,992
2000	Feb	5,185	654	427	505	609	2,990
	May	5,049	590	384	501	604	2,971
	Aug	5,063	648	371	471	601	2,971
	Nov	4,996	624	368	446	587	2,972
2001	Feb	5,077	642	403	470	582	2,981
	May	4,982	578	372	473	577	2,983
	Aug	4,970	597	356	451	574	2,991
	Nov	4,907	581	345	430	560	2,991
2002	Feb	4,992	603	385	449	562	2,993
	May	4,923	562	356	448	562	2,995
	Aug	4,947	588	359	432	559	3,009
	Nov	4,896	582	346	416	546	3,006
2003	Feb	4,992	602	392	442	541	3,014
	May	4,951	555	369	458	541	3,028
	Aug	4,945	561	363	449	536	3,036
	Nov	4,878	551	334	421	539	3,034
2004	Feb	4,947	560	376	428	546	3,038
	May	4,856	497	344	434	540	3,040

¹ Reliable information on the duration of claim for IB/SDA claimants is only available from May 1997 onwards.

² Duration is based on the benefit which the claimant has been receiving for the longest time during their current claim

**Table 7.5B Male claimants of key benefits by duration¹ of claim of oldest benefit:²
May 1997 – May 2004**

Thousands

		All	Under 3 months	3 to 6 months	6 to under 12 months	1 to under 2 years	2 years or over
1997	May	3,157	479	289	341	393	1,655
	Aug	3,126	486	274	337	369	1,660
	Nov	2,963	457	269	311	327	1,599
1998	Feb	2,982	463	288	330	334	1,567
	May	2,914	403	263	342	349	1,556
	Aug	2,903	439	238	320	368	1,538
	Nov	2,853	450	234	281	358	1,530
1999	Feb	2,912	476	279	286	351	1,520
	May	2,846	422	258	304	337	1,525
	Aug	2,822	437	244	295	323	1,523
	Nov	2,758	424	232	274	308	1,520
2000	Feb	2,802	435	262	282	308	1,516
	May	2,703	382	236	280	304	1,500
	Aug	2,688	408	220	265	301	1,494
	Nov	2,659	407	218	248	296	1,491
2001	Feb	2,719	426	246	261	294	1,491
	May	2,640	374	227	262	290	1,486
	Aug	2,609	376	210	251	288	1,484
	Nov	2,583	380	205	236	280	1,482
2002	Feb	2,650	405	238	246	282	1,478
	May	2,592	364	220	251	279	1,478
	Aug	2,584	372	212	246	276	1,479
	Nov	2,561	375	205	231	274	1,476
2003	Feb	2,634	399	238	244	275	1,478
	May	2,591	353	227	254	275	1,482
	Aug	2,569	352	211	252	271	1,484
	Nov	2,541	357	196	229	272	1,486
2004	Feb	2,593	370	230	233	274	1,487
	May	2,527	318	209	243	268	1,488

¹ Reliable information on the duration of claim for IB/SDA claimants is only available from May 1997 onwards.

² Duration is based on the benefit which the claimant has been receiving for the longest time during their current claim

**Table 7.5C Female claimants of key benefits by duration¹ of claim of oldest benefit:²
May 1997 – May 2004**

Thousands

		All	Under 3 months	3 to 6 months	6 to under 12 months	1 to under 2 years	2 years or over
1997	May	2,502	263	177	245	333	1,485
	Aug	2,539	307	180	238	325	1,489
	Nov	2,446	262	181	227	306	1,470
1998	Feb	2,447	249	186	244	304	1,463
	May	2,417	231	164	251	309	1,463
	Aug	2,452	283	161	234	314	1,460
	Nov	2,396	253	167	210	314	1,452
1999	Feb	2,416	251	180	223	310	1,452
	May	2,389	228	163	238	303	1,458
	Aug	2,423	262	163	228	301	1,468
	Nov	2,385	237	163	216	297	1,471
2000	Feb	2,383	219	166	224	301	1,474
	May	2,346	208	147	221	300	1,470
	Aug	2,374	241	151	207	300	1,477
	Nov	2,336	217	150	198	291	1,481
2001	Feb	2,358	216	157	208	288	1,490
	May	2,342	204	145	210	286	1,497
	Aug	2,361	222	146	200	286	1,507
	Nov	2,325	201	141	194	280	1,509
2002	Feb	2,342	198	146	203	280	1,515
	May	2,332	198	136	197	283	1,518
	Aug	2,362	216	147	186	283	1,530
	Nov	2,335	206	141	186	272	1,530
2003	Feb	2,358	203	154	198	267	1,537
	May	2,359	202	142	204	267	1,546
	Aug	2,376	209	152	197	266	1,553
	Nov	2,337	194	138	192	267	1,547
2004	Feb	2,354	190	145	195	272	1,551
	May	2,329	179	135	191	272	1,552

¹ Reliable information on the duration of claim for IB/SDA claimants is only available from May 1997 onwards.

² Duration is based on the benefit which the claimant has been receiving for the longest time during their current claim

7.6: Regional Analysis –

Table 7.6A Claimants of key benefits by Government Office Region

Thousands

		Great Britain	England	North East	North West	Yorks & Humberside	East Midlands	West Midlands	East	London	South East	South West	Wales	Scotland	Claimants living abroad
1996	Feb	6,308	5,223	390	933	579	402	572	420	938	567	421	411	675	9
	May	6,160	5,094	381	916	561	392	558	409	926	550	402	401	665	9
	Aug	6,209	5,125	381	925	565	391	566	410	934	550	403	406	677	9
	Nov	5,857	4,831	361	879	534	367	530	384	875	516	385	389	637	9
1997	Feb	5,841	4,810	360	881	537	367	527	383	856	513	384	388	644	9
	May	5,650	4,646	351	856	520	357	511	366	830	489	365	379	625	9
	Aug	5,656	4,646	350	860	522	359	516	364	829	484	362	379	632	9
	Nov	5,401	4,433	340	824	498	341	491	347	785	460	347	367	600	9
1998	Feb	5,420	4,444	340	827	503	345	493	350	775	460	351	368	607	9
	May	5,322	4,366	333	813	495	339	486	340	771	450	340	360	597	9
	Aug	5,346	4,378	333	813	497	340	489	339	773	452	342	362	606	9
	Nov	5,240	4,296	331	794	487	333	479	334	752	448	338	358	586	9
1999	Feb	5,319	4,360	337	803	496	344	491	341	749	452	348	364	596	9
	May	5,226	4,285	332	792	486	339	484	332	743	441	336	357	584	8
	Aug	5,236	4,291	330	791	487	340	490	333	746	440	333	356	589	9
	Nov	5,134	4,209	326	773	477	332	475	328	734	435	330	349	575	9
2000	Feb	5,176	4,240	330	783	482	337	479	331	727	438	332	353	582	9
	May	5,040	4,128	322	764	467	330	473	321	708	423	321	345	567	9
	Aug	5,054	4,131	321	765	470	333	479	321	700	423	320	347	575	9
	Nov	4,987	4,081	319	753	462	327	473	318	689	420	320	345	561	9
2001	Feb	5,068	4,145	323	768	476	337	480	323	688	424	326	351	572	9
	May	4,973	4,069	316	756	465	333	472	318	677	414	319	343	561	9
	Aug	4,961	4,056	315	751	464	329	473	316	678	412	316	342	563	9
	Nov	4,898	4,009	314	739	455	324	464	315	675	410	314	336	553	9
2002	Feb	4,983	4,079	318	753	461	331	471	324	679	421	321	341	562	9
	May	4,914	4,024	310	743	451	326	465	319	679	415	315	334	555	10
	Aug	4,936	4,038	311	742	453	324	472	319	684	418	315	338	561	10
	Nov	4,886	4,004	306	729	448	321	465	319	682	422	313	335	547	10
2003	Feb	4,982	4,084	312	742	455	330	476	328	687	432	322	339	559	10
	May	4,941	4,058	307	734	448	329	474	328	691	429	317	332	551	10
	Aug	4,934	4,050	304	730	450	328	472	327	693	430	317	330	554	11
	Nov	4,868	4,001	300	714	442	323	463	325	690	430	315	327	540	11
2004	Feb	4,936	4,053	300	724	449	327	471	332	694	438	318	332	552	11
	May	4,845	3,985	292	712	439	319	464	325	694	430	311	322	538	11

Table 7.6B Claimants of key benefits by Government Office Region

Percentages¹

		Great Britain	England	North East	North West	Yorks & Humberside	East Midlands	West Midlands	East	London	South East	South West	Wales	Scotland	Claimants living abroad
1996	Feb	18.3	17.7	25.0	22.8	19.3	16.0	17.9	13.2	21.4	11.9	14.8	24.0	21.4	.
	May	17.9	17.2	24.5	22.3	18.7	15.6	17.5	12.8	21.1	11.5	14.1	23.4	21.1	.
	Aug	18.0	17.3	24.5	22.6	18.8	15.6	17.7	12.8	21.3	11.5	14.2	23.7	21.5	.
	Nov	17.0	16.3	23.2	21.4	17.8	14.6	16.6	12.0	19.9	10.8	13.5	22.7	20.2	.
1997	Feb	16.9	16.2	23.2	21.5	17.9	14.6	16.5	11.9	19.4	10.7	13.4	22.6	20.4	.
	May	16.4	15.7	22.6	21.0	17.4	14.2	16.0	11.4	18.8	10.2	12.7	22.1	19.9	.
	Aug	16.4	15.7	22.6	21.1	17.4	14.2	16.2	11.3	18.8	10.1	12.6	22.1	20.1	.
	Nov	15.7	15.0	21.9	20.2	16.6	13.5	15.4	10.8	17.8	9.6	12.1	21.4	19.1	.
1998	Feb	15.7	15.0	22.0	20.3	16.8	13.7	15.5	10.8	17.4	9.5	12.2	21.5	19.3	.
	May	15.4	14.7	21.5	19.9	16.5	13.4	15.3	10.5	17.3	9.3	11.8	21.0	19.0	.
	Aug	15.5	14.7	21.5	19.9	16.6	13.5	15.4	10.5	17.4	9.4	11.9	21.1	19.3	.
	Nov	15.2	14.5	21.4	19.4	16.2	13.2	15.0	10.3	16.9	9.3	11.8	20.9	18.6	.
1999	Feb	15.3	14.6	21.9	19.7	16.5	13.6	15.4	10.5	16.6	9.3	12.0	21.1	19.0	.
	May	15.1	14.4	21.6	19.5	16.2	13.4	15.2	10.2	16.4	9.1	11.6	20.7	18.6	.
	Aug	15.1	14.4	21.5	19.4	16.3	13.4	15.4	10.2	16.5	9.0	11.5	20.7	18.7	.
	Nov	14.8	14.1	21.2	19.0	15.9	13.1	14.9	10.1	16.2	8.9	11.4	20.3	18.3	.
2000	Feb	14.8	14.1	21.5	19.2	16.0	13.3	15.0	10.1	15.8	9.0	11.4	20.4	18.5	.
	May	14.4	13.7	21.0	18.7	15.5	12.9	14.9	9.8	15.4	8.7	11.0	20.0	18.1	.
	Aug	14.5	13.8	20.9	18.7	15.7	13.1	15.0	9.8	15.2	8.7	10.9	20.1	18.3	.
	Nov	14.3	13.6	20.8	18.5	15.4	12.9	14.8	9.7	15.0	8.6	10.9	20.0	17.9	.
2001	Feb	14.4	13.7	21.0	18.8	15.7	13.2	15.0	9.8	14.6	8.6	11.1	20.3	18.2	.
	May	14.2	13.5	20.5	18.5	15.4	13.0	14.8	9.7	14.4	8.4	10.8	19.8	17.8	.
	Aug	14.1	13.4	20.5	18.4	15.3	12.9	14.8	9.6	14.4	8.4	10.8	19.7	17.9	.
	Nov	13.9	13.3	20.5	18.1	15.0	12.6	14.5	9.6	14.4	8.4	10.7	19.4	17.5	.
2002	Feb	14.2	13.5	20.7	18.4	15.2	12.9	14.7	9.8	14.5	8.6	10.9	19.7	17.9	.
	May	14.0	13.3	20.2	18.2	14.9	12.7	14.6	9.7	14.5	8.5	10.7	19.3	17.6	.
	Aug	14.1	13.4	20.2	18.2	15.0	12.6	14.8	9.7	14.6	8.5	10.7	19.5	17.8	.
	Nov	13.9	13.2	19.9	17.8	14.8	12.5	14.6	9.7	14.5	8.6	10.6	19.3	17.4	.
2003	Feb	14.2	13.5	20.3	18.1	15.0	12.9	14.9	10.0	14.6	8.8	10.9	19.5	17.8	.
	May	14.1	13.4	20.0	18.0	14.8	12.8	14.8	10.0	14.7	8.8	10.8	19.1	17.5	.
	Aug	13.9	13.2	19.7	17.7	14.8	12.6	14.6	9.9	14.2	8.7	10.7	18.9	17.6	.
	Nov	13.7	13.1	19.5	17.3	14.5	12.4	14.3	9.8	14.1	8.7	10.6	18.7	17.2	.
2004	Feb	13.9	13.2	19.5	17.6	14.7	12.6	14.6	10.0	14.2	8.9	10.8	19.0	17.5	.
	May	13.6	13.0	18.9	17.3	14.4	12.3	14.4	9.8	14.2	8.7	10.5	18.4	17.1	.

¹ Percentage of working age

Methodology

A full description of the methodology used to produce these analyses and the possible uses that can be made of the data is available from the contact point listed in the Notes to Editors.

These analyses are based on data collected through the administration of the individual benefits and tax credits. They are designed to give a good indication of the size of the population on these benefits and how this changes over time. However, they are affected by changes to the conditions of entitlement and to the existence of the benefits/tax credits themselves. This includes such things as: the replacement of Unemployment Benefit with Jobseeker's Allowance and the associated impact on the coverage of Income Support; and the impact of the introduction of tests to assess incapacity for Incapacity Benefit; the replacement of Family Credit/Disability Working Allowance with Working Families' Tax Credit/Disabled Person's Tax Credit and then Working Tax Credit/Child Tax Credit. No attempt has been made to adjust the series for such factors.

Summary of methodology

These analyses have been constructed by matching 5% samples from administrative benefit computer systems. People in these individual samples are selected using the last two digits of the National Insurance number (NINO). This sampling scheme ensures that the same set of people will be selected for each individual benefit and time period that they have a live claim.

To produce the client group analyses, a common "snapshot" date is chosen and the NINOs for each person claiming a benefit on this date are selected. The NINOs are then matched to produce an overall data set for those who are claiming at least one benefit on the snapshot date. The individual data items used for the various analyses (e.g. age, sex, number of children for which additional benefit is payable) are then taken from the source data sets and additional variables are then derived (e.g. statistical group, family type).

This methodology gives a "best estimate" of the overall number of claimants of benefits. However, there are some minor limitations (for example, the sample of JSA claimants is taken about two weeks before the snapshot date). The best estimates of the numbers claiming each benefit are still given by the individual samples from which the data are drawn. Benefit statistics are released by DWP Information and Analysis Directorate.

For analyses relating to children/young adult dependants and family type, Child Tax Credit (CTC) data has been used to supplement the benefit data. This particularly provides information not previously available for dependants and partners of non income-related benefit claimants i.e. claimants of IB, SDA, DLA, Contributory JSA and JSA Credits. Where child/dependants information is available on both benefit and CTC data – e.g. regarding IS claimants with children – the CTC data has been preferred as the definitive source. Where partner information is available on both the benefit and CTC data, the benefit data has been preferred. This is because CTC is becoming the primary means of paying additional money for children, whereas benefits remain the primary means of paying money in respect of partners. In the vast majority of cases where child/dependants or partner information exists on both benefit and CTC data, the information is the same on both sources anyway.

Family type and "People on benefits"

The Family Type analyses in section 2 cover claimants who receive additional money via benefits or tax credits for their partner and/or children/young adult dependants. These analyses are based on information collected for the administration of benefits and tax credits. Full information on children is available from benefit and/or Child Tax Credit (CTC) data regarding families in receipt of income-related benefits (IS, JSA(IB)). CTC data also provides child information regarding families with children in receipt of non income-related benefits (IB, SDA, DLA, Contributory JSA, JSA Credits). The main gaps are children in families receiving non income-related benefits where there is no entitlement to CTC (e.g. household income is too high) or where there is entitlement but CTC is still not in payment (e.g. it has not been claimed by the family).

In theory, it is possible to produce an estimate of the “Total number of people who receive assistance from the key benefits” - i.e. claimants plus partners and dependants for whom some additional benefit is payable. This has not been done in the tables because it is possible for the partners of claimants of income-related benefits to claim some of the other benefits in their own right (i.e. IB/SDA, DLA and Contribution-Based JSA). The Family Resources Survey (FRS) suggests that only a relatively small proportion of these partners do so, but we cannot identify which ones from the client group analysis data sets.

This table explains the definitions used in the Family Type tables:

Family Type	Definition
Couple	Claimants with a partner recorded on CTC data or receiving an additional allowance for a partner in their benefit calculation.
Single	Claimants who have their status recorded as single on benefit and/or CTC computer systems.
Children	Claimants who receive additional money for children via benefit or tax credits.
No Children	Claimants who have zero children or young adult dependants recorded; or those where the actual number of dependants is not recorded but they are not in receipt of an additional allowance of benefit for any children or young adult dependants.
Not Known	Claimants who do not have a marital status recorded and are not receiving an additional allowance of benefit for a partner. These are mainly IB, SDA and DLA claimants not also receiving CTC.

The effect of New Tax Credits

Figures in this, and future DWP publications are affected by the introduction of the Child Tax Credit (CTC) in April 2003. The main changes are:

- Child dependency increases paid with non-income related benefits were abolished for new claims to State Pension, Bereavement Benefit, Incapacity Benefit and Carer's Allowance from April 2003.
- CTC is replacing the child elements of Income Support (IS) and income-based Jobseeker's Allowance (JSA(IB)). This is happening from April 2004 onwards.

Dates when there may be particular changes in the figures are:

- April 2003, when Child dependency increases paid with non-income related benefits were abolished for new claims.
- October 2003, when families on the Minimum Income Guarantee (MIG) with children had child elements migrated to CTC.
- Financial year 2004/05, when families on Income Support and income-based Jobseeker's Allowance have child elements migrated to CTC.

A small number of former IS/ JSA(IB) recipients are no longer eligible once CTC is in payment. This is because CTC payments raise total income above the IS/JSA(IB) threshold, or other income exceeds the threshold once child allowances are removed.

We therefore advise that customers exercise caution when performing year on year comparisons, or when comparing with the previous quarter. The main effect of incorporating CTC data into this bulletin has been to add additional information on children/dependants and family type for claimants of non income-related benefits. In particular, many such claimants' family types have moved from the 'not known' to 'with children' categories, especially 'couples with children' (section 2).

Statistical groups

Claimants have been allocated to statistical groups to give an indication of the main reason why they are claiming benefit (see Definitions and Conventions). This is only one of the possible ways in which claimants could be classified and alternative classifications are possible.

Transitions analyses

The transitions analyses shown in section 3 of this bulletin are produced by matching the “snapshot” data for the stock of claimants with a live claim at the end of each quarter. By matching claimants who appear in different quarters, we can get an indication of how many move on, off and between the benefits that are included. These analyses do not cover all claimants who come on and go off these benefits over the period covered by the analyses. For example, they do not cover those claims of very short duration, which start and end between the “snapshot” dates.

Also, as they are based on matching NINOs of claimants of these benefits, they do not cover all possible movements into and out of the benefit system. For example, if a claimant leaves Income Support because his partner claims Jobseeker’s Allowance, the analyses will not capture this change.

The importance of these “missing flows” will depend mainly upon the use that is made of the data. If, for example, we want to analyse the number of different benefits that a claimant receives over a three year period, these analyses should be able to produce a good measure of it. However, if we were attempting to produce a similar analysis based on benefit units, we could miss a significant number flows - for example, where the partners in a couple alternate as to who makes the claim for a benefit when the family circumstances change.

IS claimants on Government Training schemes

Prior to the introduction of JSA, people on Government Training schemes could claim Income Support. These claimants (around 40 to 60 thousand) are included in the “others” group in the tables in this bulletin for the quarters up to and including November 1996. When JSA was introduced in October 1996, these claimants now had to claim Income-based JSA. They are not included in the client group analysis in this bulletin as validated source data are not currently available.

The table below shows the total number of people of working age who were claiming a key benefit between November 1995 and February 1998. It shows the figures as quoted in this bulletin and also shows the figures excluding those on a Government Training scheme.

	<i>Thousands</i>	
	All claimants (as quoted in this bulletin)	All claimants (excluding those on a Govt Training scheme)
November 95	6,322	6,258
November 95	6,213	6,154
February 96	6,317	6,259
May 96	6,169	6,122
November 96	6,218	6,174
November 96 ¹	5,866	5,866
February 97 ¹	5,850	5,850
May 97 ¹	5,659	5,659
November 97 ¹	5,665	5,665

¹ The “All claimants” figure quoted in this bulletin already excludes those on a Government Training scheme.

Clerical Cases

Some of the claims to each of the key benefits featured in this bulletin are not administered using the relevant DWP computer system. These claims are administered clerically and make up a very small proportion of people of working age who claim a key benefit. Therefore most clerical cases have been excluded, except Unemployment Benefit and/or Income Support claims where clerical cases are included.

Sampling Error

The analyses in this report are subject to 'sampling error', i.e. by chance the number of cases in the sample with certain characterisations (e.g. with children) may produce rated up estimates for the population which are slightly lower or slightly higher than the true population value. An indication of the effect of these sampling errors can be gained from the tables of 'confidence intervals' below. Each figure shown in the tables in this report is a best estimate based on the sample data. The true number will lie somewhere in a range around the estimate. The size of this range is usually indicated by a "95% confidence interval". There is only a 1 in 20 chance that the true value lies outside of this range. Usually this interval is approximately symmetric so, for example, an estimate of 10,000 is really showing that the true value lies in the range of 9,100 to 10,900.

Approximate 95% confidence intervals (rounded to the nearest 100) for a sample based on 1 in every 20 cases in the population are shown below for estimates of 1,000 or more.

Estimated Value	95% Confidence interval (+ or -)	Confidence interval as % of estimate (+ or -)
1,000	270	27
2,000	382	19
3,000	468	16
4,000	540	14
5,000	604	12
6,000	662	11
7,000	715	10
8,000	764	10
9,000	811	9
10,000	854	9
20,000	1,208	6
30,000	1,480	5
40,000	1,709	4
50,000	1,910	4
100,000	2,702	3
200,000	3,821	2
300,000	4,679	2
400,000	5,403	1
500,000	6,041	1
600,000	6,618	1
700,000	7,148	1
800,000	7,641	1
900,000	8,105	1
1,000,000	8,543	1

The above method applies only to estimates of numbers of claimants and not to other characteristics.

ISSN 1470-6733