

Contents

	Page
Introduction.....	3
Glossary of Terms and Conventions.....	5
Main Findings.....	9
Key Statistics on Recently Retired.....	15
Section 1 Time Series.....	19
Section 2 Personal details of State Pensioners at 31 March 2002.....	25
Section 3 Financial details of State Pensioners at 31 March 2002.....	31
Appendix A - Sampling error.....	41
Appendix B - Illustration of Government Office Regions	43

Contact point for enquiries:

Lisa Brown
Information Centre
Analytical Services Division
Department for Work and Pensions
Room BP5201
Benton Park View
Benton Park Road
NEWCASTLE UPON TYNE
NE98 1YX

Telephone: 0191-224-9233
GTN: 522-49233
Fax: 0191-225-3193
GTN: 522-53193
E-mail: lisa.brown@dwp.gsi.gov.uk

Introduction

The State Pension was first introduced on 1 January 1909. The foundation of a universal contribution-related basic State Pension was laid in the 1940s.

There are two main types of State Pension: **contributory** and **non-contributory**. Contributory State Pension consists of any combination of a Basic Pension (BP), Additional Pension (AP) or Graduated Retirement Benefit (GRB). Non-contributory pension consists of a Basic Pension plus any Graduated Retirement Benefit that is due.

The two categories of contributory State pension are:

- ◆ Category A - based on a person's own National Insurance contributions, and
- ◆ Category B - dependent on the contributions paid by a spouse.

The two main conditions for payment are that:

- ◆ the person has reached State pension age (presently 65 for men, 60 for women), and
- ◆ the contribution conditions are satisfied.

People who meet the contribution conditions get a flat rate basic pension at the standard rate. If the conditions are only partly met, the basic pension is paid pro rata. To get the minimum basic pension payable (25 per cent) a person normally needs 10 or 11 qualifying years. From April 1978, a person's contribution record can be protected, if their opportunities to work are limited because of responsibilities at home, such as bringing up a family or looking after a sick or disabled person.

Extra money for dependent children can be paid with Category A or B pensions. Extra money can also be added to a Category A pension for a dependent spouse or someone who looks after the children.

The categories of non-contributory State pension are:

- ◆ Category C - payable to people over State pension age on 5 July 1948. The widow of a man who was over 65 in July 1948 can also get a category C pension.
- ◆ Category D - is awarded to people who
 - reach the age of 80
 - satisfy certain residency conditions, and
 - failed to qualify for a category A or B pension, or
 - receive less than the non-contributory rate.

If a person does not take their State pension until after State pension age, or cancels their claim, they can earn increments. The amount of the increment is approximately 7.5% per year of deferred retirement on the basic rate.

The results contained in this publication are derived from a 5 per cent sample of 'live' cases taken from the Pensions Strategy Computer System (PSCS). Prior to September 1995, the results were based on a 10 per cent sample. Please note that all analyses exclude Northern Ireland.

All data within the tables are grossed to the total 'live' State Pension caseload for Great Britain and overseas, but excluding Northern Ireland, and are representative at 31 March 2002. The data in this publication are, as with any grossed sample results, subject to the sampling error explained in Appendix A.

The publication is divided into 3 sections:

- 1) Time series data
- 2) Personal details of State pensioners at 31 March 2002
- 3) Financial details of State pensioners entitlements at 31 March 2002

Glossary of terms and Conventions

Glossary of terms

Age addition

All pensioners over 80 years old get an age addition of 25p a week.

Additional Pension (AP)

This is the earnings-related benefit element of the state retirement pension; contributions are made via the State Earnings Related Pension Scheme (SERPS). The amount payable is based on the earnings between the lower and upper earnings limit for National Insurance contributions in tax years from April 1978 up to the final relevant year. The final relevant year is the last complete tax year before a person reaches state pension age. Earnings for the years before the final relevant year are revalued in line with the growth in average earnings. A widow or widower may inherit some or all of their deceased spouse's additional pension. The maximum proportion that can be inherited is to reduce in line with occupational schemes to 50% for contributors who reach state pension age on or after 6 October 2010. For contributors who reach state pension age on or after 6 October 2002, the change will be phased in using a sliding scale. Men may also inherit AP if their wife dies and both of them are over state pension age or if they qualify for one of the new Bereavement Benefits from 9 April 2001.

Additional Pension only

Additional Pension can be paid even when the person has no entitlement to a basic pension. A person can build up a small amount of entitlement to AP if they earn above the annual lower earnings limit for National Insurance Contributions in just one year. However, in order to receive the basic pension a person would normally need to have 9 or 10 qualifying years (see Introduction).

Basic Pension (BP)

This is a flat rate pension paid for each of the 4 categories listed below. Please note that for statistical purposes the tables also show two sub categories, ABL and BL (see notes below).

◆ *Category A Pension*

This is based on a person's own National Insurance contributions. The maximum rates payable back to November 1979 are shown in table RP2. A composite pension (Category ABL) based on both the personal and spouse's contributions can also be paid up to a maximum amount of 60% of the standard category A rate.

◆ *Category B Pension*

This is based on the spouse's National Insurance record. It is paid when a widow or widower is not entitled to a category A pension in their own right. Any category A entitlement would be topped up by the spouse's contributions before a category B pension would be considered. The maximum is the same as the standard category A rate. A Category BL pension is payable when a married person is not entitled to a category A pension but their spouse is. It is currently paid at approximately 60% of the standard category A rate.

◆ *Category C Pension*

A category C pension is non-contributory. It is payable to people over State pension age on 5 July 1948, and are therefore excluded from the National Insurance scheme. The widow of a man who was over 65 in July 1948 can also get a category C pension. The amount paid is equal to approximately 60% of the standard category A rate. There are a small number of cases still in payment.

◆ *Category D Pension*

A category D pension is non-contributory. It is awarded to people who reach the age of 80, satisfy certain residency conditions, and failed to qualify for a category A or B pension, or who receive less than the non-contributory rate. The amount paid is equal to approximately 60% of the standard category A rate.

Contracted Out Deduction (COD)

The Additional Pension accrued between 6 April 1978 and 5 April 1997 is reduced when someone has been a member of a contracted out scheme or personal pension scheme used in place of SERPS. Contracted out salary related schemes provide a Guaranteed Minimum Pension (GMP) worth about the same as the Additional Pension payable under the state scheme. In the state scheme this is now termed the Contracted Out Deduction. The Additional Pension is reduced by the contracted out deduction to prevent double provision. With contracted out money purchase schemes, and personal pensions, there is no guaranteed minimum but the Additional Pension is reduced in a similar way. A widow or widower is entitled to half of the GMP of their spouse. This will result in an appropriate contracted out deduction being made.

Dependency Addition

This is extra money paid for dependent children, a spouse or someone looking after the children. The rate paid for a child is always at the full rate provided there is some basic pension in payment. The amount paid for a wife or someone looking after the children is reduced in proportion to the amount of basic pension due. The maximum payable for a dependent wife is 60% of the category A rate.

Graduated retirement benefit (GRB)

This is paid to those people who paid into the graduated pension scheme, which ended on 5 April 1975. The entitlement is based on each unit of graduated contributions paid (£7.50 for a man, £9.00 for a woman). A pensioner can delay claiming and earn increments in the same way as for other parts of the pension. A widow or widower can get half of any graduated retirement benefit for which their spouse had qualified.

Graduated retirement benefit only

Provided they have earned entitlement under the GRB contribution conditions, GRB can be paid even when the pensioner does not satisfy the contribution conditions for a basic pension.

Gross Additional Pension

This is the amount payable before the Contracted Out Deduction has been applied to the Additional Pension.

Increments (Incs)

If a person does not take their retirement pension until after State pension age, or cancels their claim, they can earn increments. They get the increments with the pension they get on their own National Insurance Record, either when they do claim or five years after they reach State pension age. The amount of the increment is about 7.5% per year of deferred retirement on the basic rate, including invalidity allowance and additional pension. The minimum deferment is 42 days. A married woman can earn increments whether her pension is based on her own or her husband's National Insurance Record or both. Increments on her husband's National Insurance Record can only be earned if the couple are both over State pension age. A widow can have increments earned by her husband added to her own subject to the inheritance rules.

Invalidity addition (IVA)

This is paid to a person who was entitled to invalidity allowance, as an increase of invalidity pension, at any time during 8 weeks before they reach State pension age. The amount they get is the rate of invalidity allowance they were entitled to when they reached State pension age. The rate of invalidity pension is reduced by the notional rate of additional pension.

Net Additional Pension

This is the entitlement to Additional Pension after reduction for Contracted Out Deduction earned between 6 April 1978 and 5 April 1997.

Overseas Pensioners

People living outside the UK will not get annual increases in Retirement Pension except in EEA countries or one of the countries covered by the appropriate legislation.

Conventions

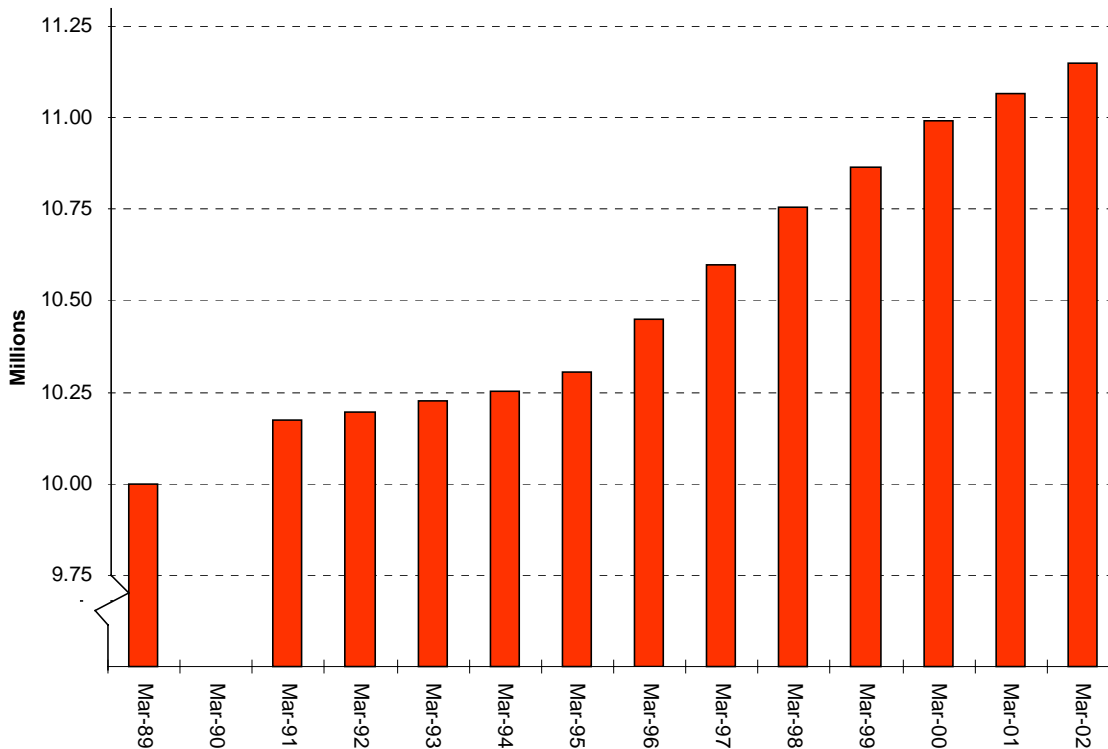
..	Not available	COD	Contracted Out Deduction
.	Not applicable	GRB	Graduated Retirement Benefit
-	Nil or negligible	Incs	Increments
£pw	Pounds per week	IVA	Invalidity Addition
AP	Additional Pension	PSCS	Pensions Strategy Computer System
BP	Basic Pension		

Grossed figures are rounded to one decimal place which may result in component values not summing exactly to totals.

MAIN FINDINGS

This section summarises the key findings of the March 2002 State Pension Summary of Statistics. More detailed analysis and tables are available in the main body of the publication. Please note that all analyses exclude Northern Ireland.

FIGURE 1 STATE PENSION CASELOAD: 1989 – 2002



NB: Data unavailable in September 1989 and March 1990 due to introduction of new computer system

- The total number of persons in receipt of State Pension at March 2002 is just over 11.1 million. The number of men in receipt of State Pension is just over 4.1 million and the number of women is around 7.0 million.
- There has been a net increase of 80 thousand (0.7%) in the state pensioner caseload over the period March 2001 to March 2002. Within this total net increase, the number of men increased by 58 thousand and the number of women increased by 23 thousand. The proportion of men within the RP caseload is slowly increasing and currently stands at 37%.
- The number of state pensioners living overseas totalled 877 thousand in March 2002, an increase of 2.8% over the previous year.

**FIGURE 2 AGE DISTRIBUTION OF STATE PENSIONERS:
MARCH 2002**

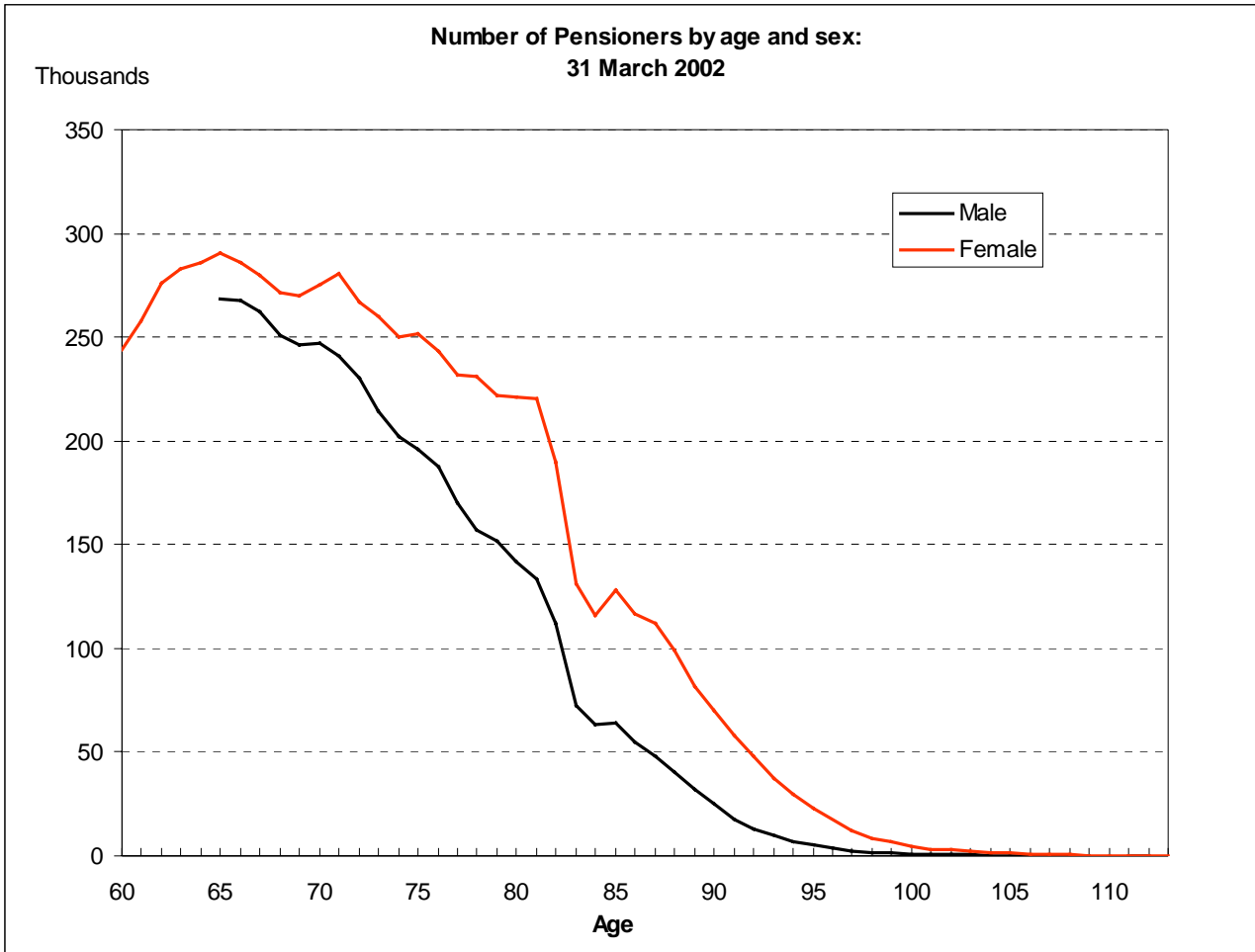
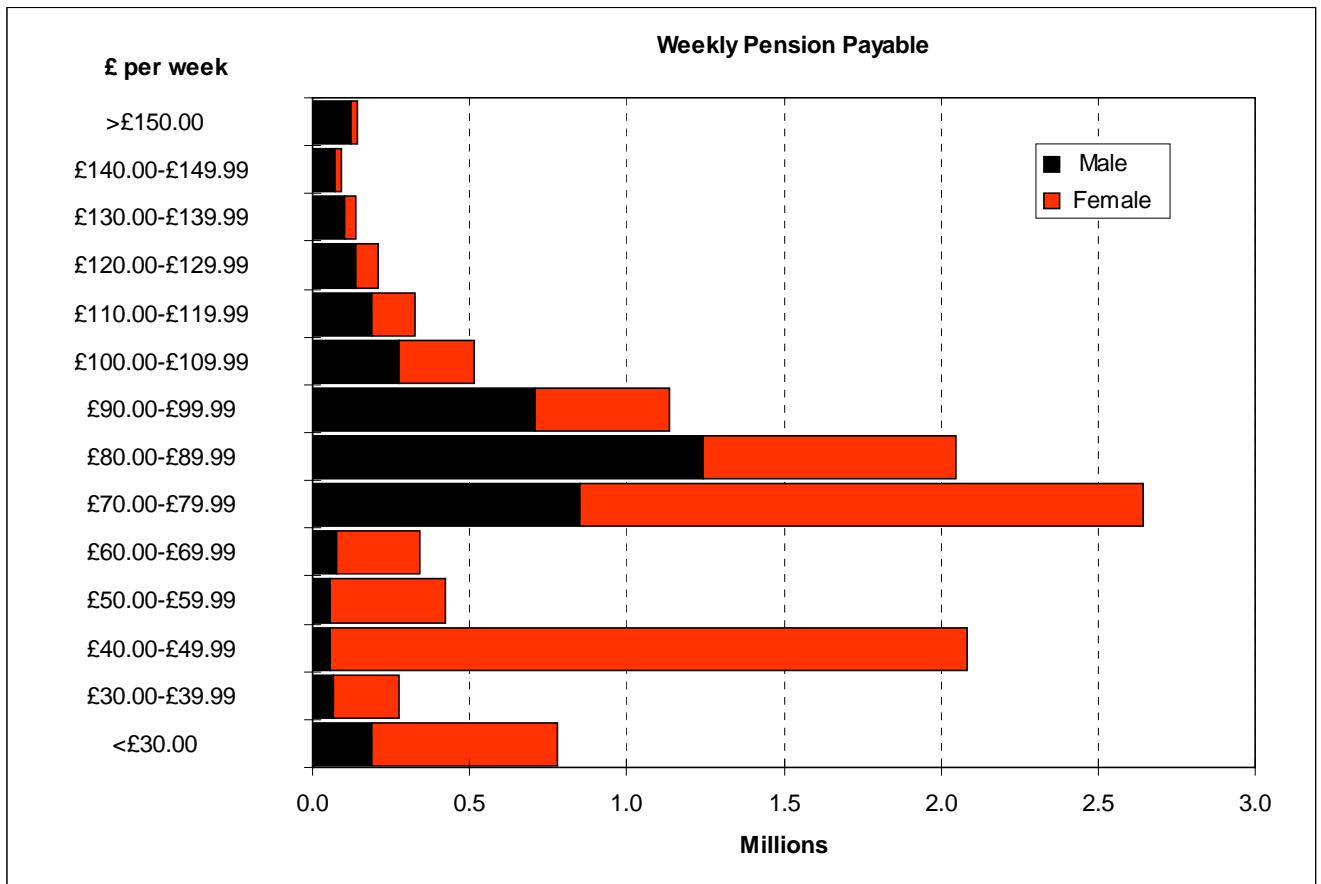


Figure 2 shows the difference for the caseload for males and females by age. The main features of the age distribution are:

- Men cannot claim their State Pension until they reach 65 whereas women can claim upon reaching their 60th birthday.
- Across all individual ages the number of men in receipt of a State Pension is lower than the number of women. Due to the higher life expectancy for females this imbalance increases with age. Thus in the 65-69 age group the ratio of males to females is 1: 1.1, but the ratio increases to 1: 4.9 for centenarians.
- The rapid decrease in numbers aged around 80-82 is a demographic effect due to the First World War and the subsequent population boom following its end. Thereafter, the declining numbers as age increases seems to be fairly constant for both sexes.
- The number of female state pensioners between 60 and 65 is relatively low because of the low birth rates immediately before and during the Second World War. It can also be attributed to women waiting for their husbands to retire before qualifying for their State Pension.

**FIGURE 3 CASELOAD BY WEEKLY AMOUNT OF STATE PENSION PAYABLE:
MARCH 2002**



- Figure 3 shows the distribution of the amount of weekly State Pension payable, banded in terms of £ per week and broken down by gender. The weekly entitlement includes basic pension, net additional pension, all increments, graduated state benefit, age addition, any IVA payable and any relevant adjustments e.g.: for hospitalisation.
- The 'spike' in the £40.00-£49.99 band is mostly due to women whom are entitled to a basic pension of £45.20 pw plus additional components (£45.45 pw if over 80) based on their spouse's contributions (Category ABL and BL pensioners).
- The large numbers in the £70.00-£89.99 bands correspond to the millions of pensioners with a Category A pension in their own right or those people (mainly women) who have a full basic pension based on their deceased spouse's contribution record (Category B).
- The pensioners with a weekly entitlement of £90 pw and over are predominantly cases with substantial amounts of net additional pension in payment (see figures 5A and 5B).
- The average amount of pension entitlement at March 2002 was £72.92 per week (an annual increase of (7.7%). The average amount for men is substantially higher than for women; £88.14 per week (+7.5%) compared with £63.90 (+7.8%).

**FIGURE 4 AVERAGE WEEKLY ENTITLEMENT TO BASIC PENSION:
MARCH 2002**

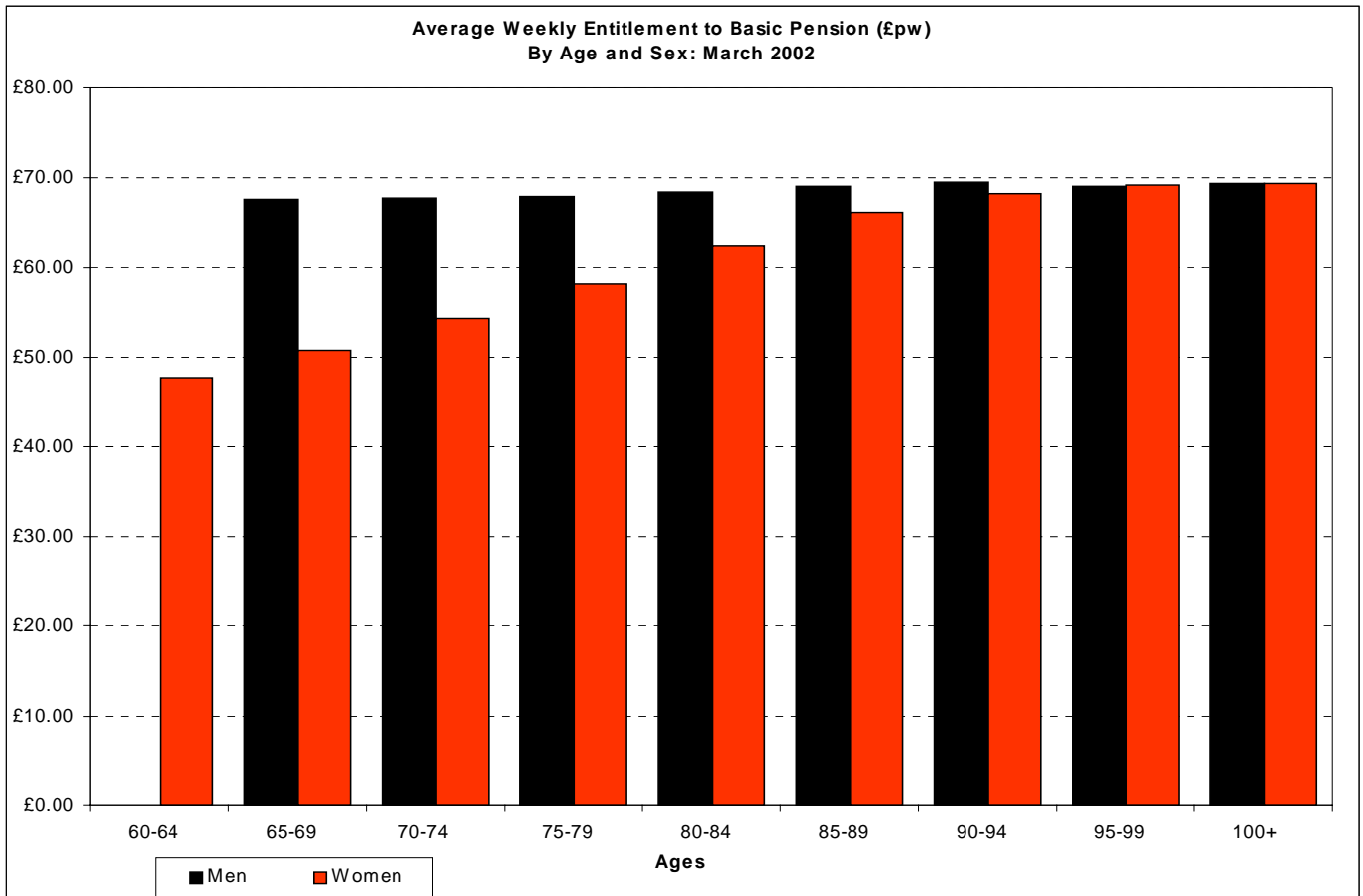


Figure 4 shows the average entitlement to the basic State Pension in terms of £ per week.

The main points are:

- the basic pension component represents almost 82% of the total cost of the state pension.
- on average, women's' entitlement to the basic pension is lower than for males in every age band. However, this disparity rapidly closes with age and the average entitlement for the 90 and above age bands is almost identical. The reasons for this are:
 1. in the younger age bands it is more likely that the woman will have a spouse and be claiming the lower rate of ABL and BL basic pension (£45.20 pw).
 2. in the older age bands, a woman is more likely to be widowed and to have inherited her husband's contribution record. This raises the average entitlement to basic pension for women in the older age groups. This effect is particularly marked in the oldest age bands.

FIGURE 5A MALE AVERAGE ENTITLEMENT TO NON BASIC PENSION COMPONENTS: MARCH 2002

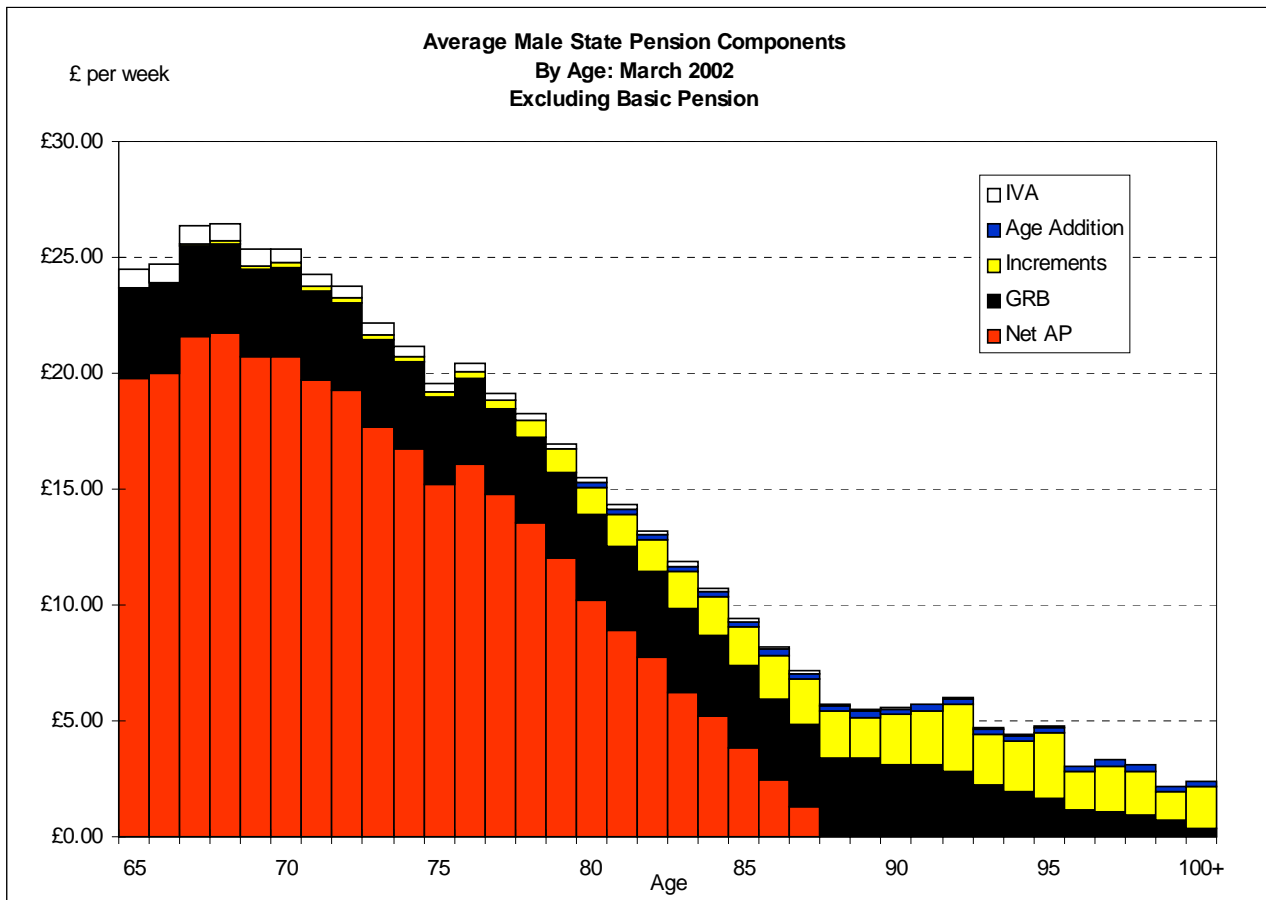


Figure 5A shows the average entitlement to the non-basic State Pension components in terms of £ per week for men in March 2002.

The main features of the graph are:

- the total non-basic components are highest on average for the younger male pensioners. The most important component for the under 85s is the net additional pension, although this steadily declines with age. This reflects the introduction of SERPS from April 1978, which allows younger pensioners more opportunity to build up a higher entitlement.
- the next most important component is graduated state benefit (GRB). This is the scheme preceding and replaced by SERPS. Average GRB seems fairly constant (approximately £3.70 per week) up to 91 years old but after this age it declines rapidly.
- amounts of increments are negligible for pensioners under the age of 70 but increase steadily with age. Over the age of 100 the average amounts become more variable due to the relatively low numbers of pensioners within the sample.
- the age addition is only payable from a person's 80th birthday at a flat rate of 25 pence per week.

FIGURE 5B FEMALE AVERAGE ENTITLEMENT TO NON BASIC PENSION COMPONENTS: MARCH 2002

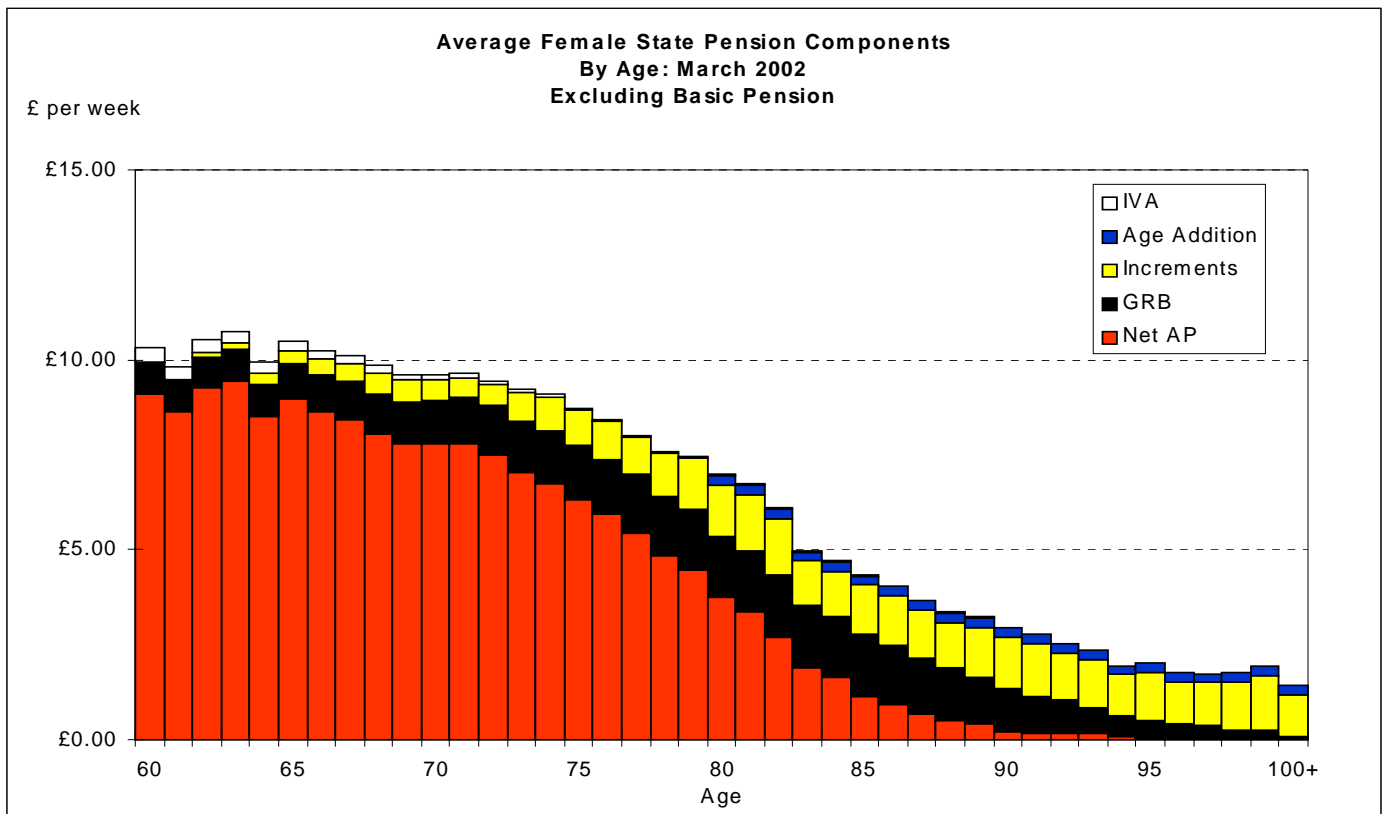


Figure 5B shows the average entitlement to the non-basic State Pension components in terms of £ per week for women in March 2002.

The main features of the graph are:

- the total non-basic components are highest on average for the younger pensioners. Like men, the most important component for the under 80s is the net additional pension and follows a similar pattern. However, the amounts are substantially lower for women at all ages compared with men.
- the next most important component on average for women are increments. These are negligible for women under the age of 65 but increase steadily until the age of 80. Thereafter the value of increments remains fairly constant.
- the third most important non-basic component on average is graduated state benefit (GRB). Average GRB for women seems fairly constant (approximately £1.25 per week) up to approximately 85 but after this age it tapers down steadily.

**Key Statistics on Recently Retired Pensioners residing in Great Britain:
Men aged 65 and Women aged 60**

	March 2001	March 2002	% change
Men			
Total State Pensioners (000s)	242.8	248.5	2.4
Cat A pensioners	242.6	248.4	2.4
Cat B pensioners	-	-	.
Cat ABL pensioners	-	-	.
Cat BL pensioners	-	-	.
Grad only pensioners	-	-	.
AP only pensioners	-	-	.
Cat C pensioners	-	-	.
Cat D pensioners	-	-	.
Average amount of Pension Payable (£pw)	89.81	95.83	6.7
of which:			
Basic Pension	65.70	70.52	7.3
Net AP	19.95	21.02	5.4
Graduated Pension	3.96	4.09	3.3
Increments	-	-	.
IVA	0.83	0.82	-1.2
Women			
Total State Pensioners (000s)	224.7	232.1	3.3
Cat A Pensioners	175.0	186.7	6.7
Cat B pensioners	1.5	1.1	-21.9
Cat ABL pensioners	17.9	18.5	3.0
Cat BL pensioners	14.8	13.2	-11.1
Grad only pensioners	12.5	10.9	-12.5
AP only pensioners	3.1	1.8	-42.5
Cat C pensioners	-	-	.
Cat D pensioners	-	-	.
Average amount of Pension Payable (£pw)	53.23	59.45	11.7
of which:			
Basic Pension	43.97	49.02	11.5
Net AP	8.31	9.44	13.6
Graduated Pension	0.78	0.82	5.1
Increments	-	0.01	.
IVA	0.37	0.39	5.4

Key Statistics on Recently Retired Pensioners residing in Great Britain: (cont.)

Men : (£pw)

Average Amounts of Additional Pension

	March 2001	March 2002	% change
Gross AP	49.76	51.81	4.1
Total COD earned 6/4/78-5/4/97	30.73	31.75	3.3
Net AP	19.95	21.02	5.4

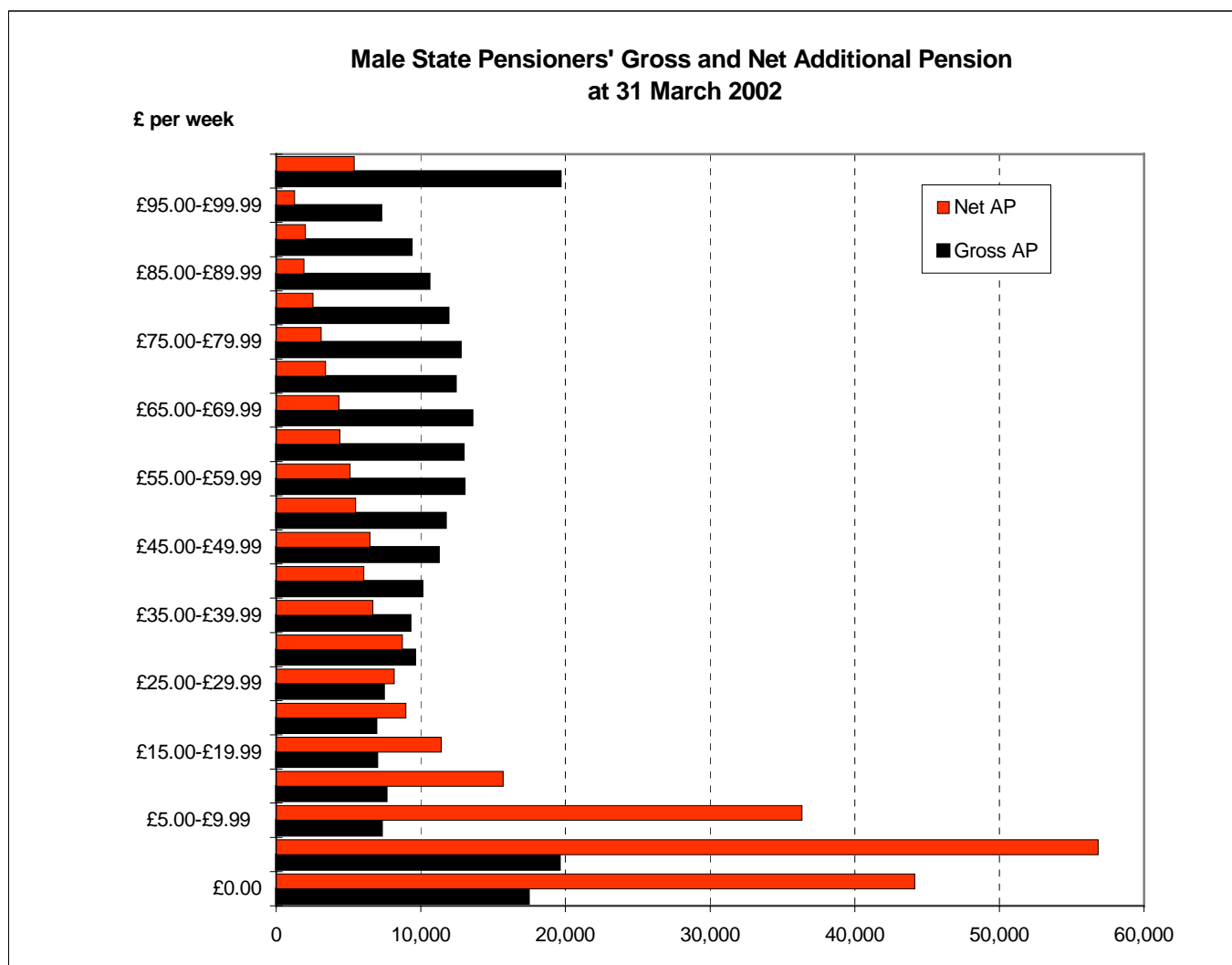
Average Amounts of Additional Pension: Cases with Gross Additional Pension greater than zero

	March 2001	March 2002	% change
Gross AP	52.25	55.73	6.7
Total COD earned 6/4/78-5/4/97	32.26	34.14	5.8
Net AP	20.94	22.61	8.0

Average Amounts of Additional Pension: Cases with zero amount of Contracted Out Deduction

	March 2001	March 2002	% change
Gross AP	30.68	31.3	2.0
Net AP	30.68	31.3	2.0

MALE STATE PENSIONER'S GROSS AND NET ADDITIONAL PENSION:



Key Statistics on Recently Retired Pensioners residing in Great Britain: (cont.)

Women : £pw

Average Amounts of Additional Pension:

	March 2001	March 2002	% change
Gross AP	16.10	17.76	10.3
Total COD earned 6/4/78-5/4/97	7.84	8.39	7.0
Net AP	8.31	9.44	13.6

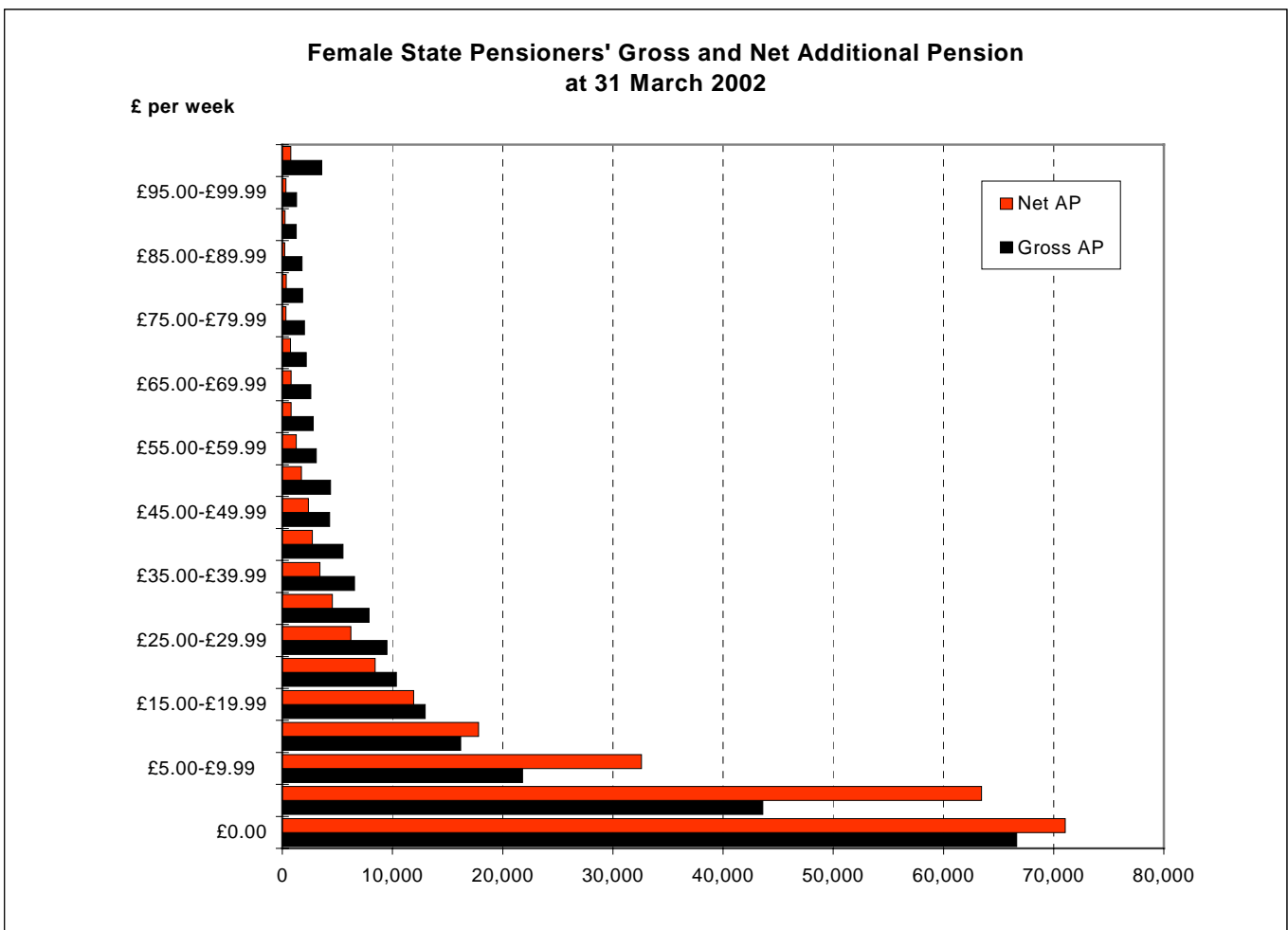
Average Amounts of Additional Pension: Cases with Gross Additional Pension greater than zero

	March 2001	March 2002	% change
Gross AP	23.53	24.91	5.9
Total COD earned 6/4/78-5/4/97	11.46	11.77	2.7
Net AP	12.16	13.24	8.9

Average Amounts of Additional Pension: Cases with zero amount of Contracted Out Deduction

	March 2001	March 2002	% change
Gross AP	6.54	7.87	20.3
Net AP	6.54	7.87	20.3

FEMALE STATE PENSIONER'S GROSS AND NET ADDITIONAL PENSION:



Section 1: Time Series Data

	Page
Table RP1 State Pensioners by category of pension: November 1980 - March 2002.....	20
Table RP2 Rates of State Pension: November 1980 - April 2002.....	23

State Pensioners¹ by category of pension

November 1980 - March 2002

RP1

Thousands

	All types	Contributory						Non contributory	
		A	B	ABL	BL	GRB only	AP only	C ²	D
Men and Women									
Nov-80	9,118.2	4,906.7	2,171.2	30.8	1,809.3	147.3	1.0	..	51.9
Jun-81	9,231.8	4,982.9	2,190.6	46.0	1,811.2	150.8	1.5	..	48.8
Nov-81	9,301.1	5,034.8	2,194.5	57.6	1,810.8	154.3	1.9	..	47.2
May-82	9,365.2	5,087.9	2,192.0	74.9	1,805.1	157.8	2.6	..	44.9
Sep-82	9,394.6	5,116.5	2,189.2	87.8	1,794.1	159.7	3.3	..	44.0
Mar-83	9,437.5	5,161.2	2,187.4	106.0	1,774.5	162.3	4.0	..	42.1
Sep-83	9,492.9	5,219.0	2,179.3	126.6	1,760.1	162.2	4.8	..	40.9
Mar-84	9,531.7	5,266.1	2,179.8	144.1	1,732.0	163.8	6.3	..	39.6
Sep-84 ³
Mar-85	9,630.7	5,351.3	2,163.8	188.5	1,714.4	166.9	8.6	..	37.2
Sep-85	9,724.2	5,432.7	2,153.3	234.3	1,700.0	158.9	8.9	..	36.1
Mar-86	9,782.7	5,492.4	2,142.4	274.1	1,667.6	156.7	10.3	..	39.2
Sep-86	9,858.8	5,547.3	2,137.1	317.3	1,649.8	157.5	10.8	..	39.0
Mar-87 ³
Sep-87	9,942.7	5,628.9	2,102.8	382.3	1,612.5	164.0	14.6	..	37.6
Mar-88	9,952.6	5,649.6	2,086.2	412.1	1,589.4	163.1	16.0	..	36.2
Sep-88	9,998.3	5,689.8	2,077.2	441.4	1,572.8	163.7	17.4	..	36.0
Mar-89	9,997.4	5,705.1	2,060.0	467.4	1,549.1	161.8	18.8	..	35.2
Sep-89 ³
Mar-90 ³
Sep-90	10,172.6	5,867.0	2,015.7	552.3	1,521.0	159.8	23.9	..	32.9
Mar-91	10,171.8	5,886.2	2,000.0	575.0	1,498.2	155.1	25.5	..	31.8
Sep-91	10,226.9	5,939.1	1,984.7	600.1	1,492.3	152.6	26.7	..	31.4
Mar-92	10,196.7	5,953.2	1,960.8	620.9	1,470.7	148.7	12.7	..	29.7
Sep-92	10,271.2	6,022.1	1,947.7	643.1	1,469.5	146.2	13.5	..	29.1
Mar-93	10,224.9	6,019.6	1,921.3	660.7	1,439.4	141.2	14.1	..	28.6
Sep-93	10,268.5	6,065.9	1,910.2	682.6	1,429.2	137.5	14.6	..	28.5
Mar-94	10,251.7	6,085.7	1,881.0	700.0	1,408.2	134.1	15.0	..	27.7
Sep-94	10,296.9	6,141.9	1,863.1	720.1	1,398.0	130.4	15.6	..	27.8
Mar-95	10,303.7	6,180.7	1,837.1	736.0	1,378.8	127.8	16.1	..	27.2
Sep-95	10,411.3	6,283.0	1,825.8	760.7	1,374.3	122.0	16.8	..	28.7
Mar-96	10,449.7	6,348.3	1,792.6	816.0	1,330.5	117.9	16.5	..	28.0
Sep-96	10,564.0	6,461.3	1,775.2	847.1	1,324.9	113.3	14.6	* 0.4	27.1
Mar-97	10,596.6	6,522.4	1,740.5	872.0	1,310.0	110.2	14.7	* 0.4	26.5
Sep-97	10,709.3	6,636.1	1,717.2	900.8	1,303.6	109.2	16.0	* 0.4	26.0
Mar-98	10,756.6	6,710.9	1,687.0	923.8	1,289.7	103.6	16.0	* 0.3	25.2
Sep-98	10,834.6	6,806.2	1,658.7	949.8	1,280.1	98.1	16.7	* 0.3	24.8
Mar-99	10,866.6	6,867.4	1,625.0	969.1	1,269.4	94.9	16.5	* 0.3	23.9
Sep-99	10,966.4	6,979.3	1,596.5	997.2	1,262.1	91.2	16.3	* 0.3	23.5
Mar-00	10,990.9	7,043.0	1,559.7	1,018.5	1,239.9	89.1	17.2	* 0.3	23.2
Sep-00	11,043.0	7,116.4	1,535.5	1,037.4	1,223.5	88.4	18.2	* 0.2	23.3
Mar-01	11,067.1	7,174.7	1,506.4	1,051.7	1,206.0	86.3	18.3	* 0.1	23.3
Sep-01	11,143.9	7,268.2	1,479.3	1,072.1	1,198.3	84.6	18.1	* 0.1	23.2
Mar-02	11,147.4	7,325.1	1,440.7	1,081.2	1,175.8	82.8	18.3	* 0.1	23.3

¹ Includes GB and overseas pensioners but excludes the majority of Northern Ireland cases.

Those included are incorrectly included within our sample.

² Category C pensioners only tabled separately from September 1996, prior to this they were included with Category D pensioners

³ Figures not available.

* Figures 500 and under marked "***" are subject to a high degree of sampling error and should be used only as a guide to the current situation.

State Pensioners¹ by category of pension
November 1980 - March 2002

RP1

Thousands

	All types	Contributory						Non contributory	
		A	B	ABL	BL	GRB only	AP only	C ²	D
Men									
Nov-80	3,182.1	3,174.7	-	-	-	2.0	-	..	5.1
Jun-81	3,202.2	3,194.9	-	-	-	2.1	-	..	4.9
Nov-81	3,219.3	3,212.1	-	-	-	2.1	-	..	4.8
May-82	3,223.2	3,216.0	-	-	-	2.1	-	..	4.7
Sep-82	3,219.4	3,212.0	-	-	-	2.2	-	..	4.7
Mar-83	3,214.7	3,207.3	-	-	-	2.2	-	..	4.7
Sep-83	3,217.6	3,210.0	-	-	-	2.3	-	..	4.7
Mar-84	3,206.1	3,198.2	-	-	-	2.4	-	..	4.8
Sep-84 ³
Mar-85	3,242.3	3,233.8	-	-	-	2.5	0.5	..	5.2
Sep-85	3,289.4	3,280.9	-	-	-	2.4	0.5	..	5.3
Mar-86	3,310.1	3,301.5	-	-	-	2.3	0.5	..	5.5
Sep-86	3,346.5	3,337.8	-	-	-	2.3	0.5	..	5.6
Mar-87 ³
Sep-87	3,390.1	3,381.1	-	-	-	2.3	0.6	..	5.8
Mar-88	3,394.4	3,385.2	-	-	-	2.5	0.6	..	5.8
Sep-88	3,415.1	3,405.6	-	-	-	2.5	0.7	..	6.0
Mar-89	3,419.0	3,409.2	-	-	-	2.5	0.7	..	6.2
Sep-89 ³
Mar-90 ³
Sep-90	3,491.0	3,480.8	-	-	-	2.7	0.9	..	6.2
Mar-91	3,495.2	3,485.0	-	-	-	2.8	1.0	..	6.0
Sep-91	3,521.8	3,511.2	0.6	-	-	2.9	1.0	..	6.1
Mar-92	3,517.7	3,507.1	0.7	-	-	3.0	1.1	..	5.8
Sep-92	3,551.1	3,540.6	0.8	-	-	3.1	1.1	..	5.5
Mar-93	3,538.8	3,528.4	0.8	-	-	3.0	1.2	..	5.4
Sep-93	3,561.0	3,550.2	0.8	-	-	3.2	1.2	..	5.6
Mar-94	3,561.4	3,550.6	0.8	-	-	3.2	1.3	..	5.5
Sep-94	3,587.9	3,576.7	0.8	-	-	3.5	1.3	..	5.6
Mar-95	3,595.5	3,584.3	0.8	-	-	3.5	1.5	..	5.4
Sep-95	3,659.6	3,647.4	0.8	-	-	3.9	1.5	..	6.0
Mar-96	3,693.9	3,681.6	0.8	-	-	4.3	1.5	..	5.7
Sep-96	3,761.1	3,748.3	0.8	-	-	4.7	1.6	..	5.7
Mar-97	3,791.8	3,778.9	0.8	-	-	4.8	1.8	..	5.6
Sep-97	3,854.0	3,840.7	0.8	-	-	5.1	1.9	..	5.5
Mar-98	3,885.6	3,871.9	0.8	-	-	5.4	1.9	..	5.5
Sep-98	3,935.1	3,921.4	0.8	-	-	5.5	2.1	..	5.3
Mar-99	3,961.1	3,947.3	1.0	-	-	5.5	2.2	..	5.1
Sep-99	4,021.0	4,006.6	1.0	-	-	6.0	2.2	..	5.1
Mar-00	4,044.6	4,030.0	1.2	-	* 0.1	5.9	2.4	..	5.2
Sep-00	4,068.6	4,053.5	1.0	-	-	6.2	2.7	..	5.1
Mar-01	4,089.0	4,073.6	1.1	-	-	6.4	2.7	..	5.1
Sep-01	4,135.8	4,119.8	1.1	-	-	6.9	2.8	..	5.1
Mar-02	4,146.5	4,130.2	1.1	-	-	7.2	2.9	..	5.0

¹ Includes GB and overseas pensioners but excludes the majority of Northern Ireland cases.

Those included are incorrectly included within our sample.

² Category C pensioners only tabled separately from September 1996, prior to this they were included with Category D pensioners

³ Figures not available.

* Figures 500 and under marked "" are subject to a high degree of sampling error and should be used only as a guide to the current situation

State Pensioners¹ by category of pension

November 1980 - March 2002

RP1

Thousands

	All types	Contributory						Non contributory	
		A	B	ABL	BL	GRB only	AP only	C ²	D
Women									
Nov-80	5,936.0	1,731.9	2,171.0	30.8	1,809.3	145.3	0.9	..	46.8
Jun-81	6,029.6	1,788.0	2,190.4	46.0	1,811.2	148.7	1.4	..	43.9
Nov-81	6,081.7	1,822.7	2,194.2	57.6	1,810.8	152.1	1.8	..	42.5
May-82	6,142.2	1,872.0	2,191.8	74.9	1,805.1	155.7	2.5	..	40.2
Sep-82	6,175.3	1,904.5	2,189.0	87.8	1,794.1	157.5	3.1	..	39.3
Mar-83	6,222.7	1,953.9	2,187.1	106.0	1,774.5	160.0	3.8	..	37.4
Sep-83	6,275.3	2,009.0	2,179.0	126.6	1,760.1	159.9	4.5	..	36.2
Mar-84	6,325.4	2,067.9	2,179.5	144.1	1,732.0	161.3	5.9	..	34.7
Sep-84 ³
Mar-85	6,388.3	2,117.4	2,163.5	188.5	1,714.4	164.4	8.1	..	32.0
Sep-85	6,435.0	2,151.9	2,153.0	234.3	1,700.0	156.5	8.5	..	30.8
Mar-86	6,472.7	2,191.0	2,142.1	274.1	1,667.6	154.4	9.8	..	33.7
Sep-86	6,512.1	2,209.5	2,136.8	317.3	1,649.8	155.1	10.3	..	33.3
Mar-87 ³
Sep-87	6,552.5	2,247.8	2,102.4	382.3	1,612.5	161.7	14.0	..	31.8
Mar-88	6,558.1	2,264.3	2,085.8	412.1	1,589.4	160.7	15.3	..	30.5
Sep-88	6,583.3	2,284.2	2,076.9	441.4	1,572.8	161.2	16.8	..	30.0
Mar-89	6,578.5	2,296.0	2,059.6	467.4	1,549.1	159.2	18.1	..	29.1
Sep-89 ³
Mar-90 ³
Sep-90	6,681.6	2,386.2	2,015.4	552.3	1,521.0	157.0	23.0	..	26.7
Mar-91	6,676.6	2,401.2	1,999.6	575.0	1,498.2	152.3	24.5	..	25.8
Sep-91	6,705.0	2,427.8	1,984.1	600.1	1,492.3	149.7	25.7	..	25.3
Mar-92	6,678.9	2,446.1	1,960.1	620.9	1,470.7	145.6	11.6	..	23.9
Sep-92	6,720.1	2,481.5	1,946.9	643.1	1,469.5	143.1	12.4	..	23.6
Mar-93	6,686.1	2,491.2	1,920.6	660.7	1,439.4	138.2	12.9	..	23.1
Sep-93	6,707.7	2,515.8	1,909.5	682.6	1,429.2	134.3	13.4	..	22.9
Mar-94	6,690.3	2,535.1	1,880.2	700.0	1,408.2	130.9	13.7	..	22.2
Sep-94	6,709.2	2,565.3	1,862.3	720.1	1,398.0	127.0	14.3	..	22.2
Mar-95	6,708.2	2,596.4	1,836.3	736.0	1,378.8	124.3	14.6	..	21.8
Sep-95	6,751.7	2,635.6	1,825.0	760.7	1,374.3	118.1	15.3	..	22.7
Mar-96	6,756.1	2,666.9	1,791.9	784.9	1,361.5	113.6	15.0	..	22.3
Sep-96	6,802.8	2,713.0	1,774.4	847.1	1,324.9	108.6	13.0	* 0.4	21.4
Mar-97	6,804.8	2,743.5	1,739.7	872.0	1,310.0	105.4	12.9	* 0.4	20.9
Sep-97	6,855.4	2,795.4	1,716.4	900.8	1,303.6	104.2	14.1	* 0.4	20.5
Mar-98	6,871.1	2,839.0	1,686.2	923.8	1,289.7	98.2	14.0	* 0.3	19.8
Sep-98	6,899.6	2,884.8	1,657.8	949.8	1,280.1	92.6	14.6	* 0.3	19.5
Mar-99	6,905.5	2,920.1	1,624.0	969.1	1,269.4	89.4	14.3	* 0.3	18.8
Sep-99	6,945.4	2,972.7	1,595.4	997.2	1,262.1	85.2	14.1	* 0.3	18.4
Mar-00	6,946.3	3,013.1	1,558.5	1,018.5	1,239.9	83.3	14.8	* 0.3	18.0
Sep-00	6,974.4	3,062.9	1,534.5	1,037.4	1,223.5	82.3	15.5	* 0.2	18.1
Mar-01	6,978.0	3,101.1	1,505.3	1,051.7	1,206.0	79.9	15.6	* 0.1	18.2
Sep-01	7,008.1	3,148.4	1,478.1	1,072.1	1,198.3	77.7	15.3	* 0.1	18.1
Mar-02	7,000.8	3,194.9	1,439.6	1,081.2	1,175.8	75.6	15.4	* 0.1	18.2

¹ Includes GB and overseas pensioners but excludes the majority of Northern Ireland cases.

Those included are incorrectly included within our sample.

² Category C pensioners only tabled separately from September 1996, prior to this they were included with Category D pensioners

³ Figures not available.

* Figures 500 and under marked "*" are subject to a high degree of sampling error and should be used only as a guide to the current situation.

Rates of State Pension

RP2
£ per week

Date of Uprating	Category A or B 100% rate		Category ABL, BL,C ,D or Adult Dependant		Increase for dependant children		Graduated State Benefit per 100 units ¹
	Under 80	80 and over	Under 80	80 and over	1st Child	Subsequent children	
12-November-1979	23.30	23.55	14.00	14.25	7.10	7.10	3.04
24-November-1980	27.15	27.40	16.30	16.55	7.50	7.50	3.54
23-November-1981	29.60	29.85	17.75	18.00	7.70	7.70	3.86
22-November-1982	32.85	33.10	19.70	19.95	7.95	7.95	4.28
21-November-1983	34.05	34.30	20.45	20.70	7.60	7.60	4.44
26-November-1984	35.80	36.05	21.50	21.75	7.65	7.65	4.67
25-November-1985	38.30	38.55	23.00	23.25	8.05	8.05	5.00
28-July-1986	38.70	38.95	23.25	23.50	8.05	8.05	5.06
06-April-1987	39.50	39.75	23.75	24.00	8.05	8.05	5.17
01-April-1988	41.15	41.40	24.75	25.00	8.40	8.40	5.39
10-April-1989	43.60	43.85	26.20	26.45	8.95	8.95	5.71
09-April-1990	46.90	47.15	28.20	28.45	9.65	9.65	6.14
08-April-1991	52.00	52.25	31.25	31.50	9.70	10.70	6.81
06-April-1992	54.15	54.40	32.55	32.80	9.75	10.85	7.09
12-April-1993	56.10	56.35	33.70	33.95	9.80	10.95	7.35
11-April-1994	57.60	57.85	34.50	34.75	9.80	11.00	7.48
10-April-1995	58.85	59.10	35.25	35.50	9.85	11.05	7.64
08-April-1996	61.15	61.40	36.60	36.85	9.90	11.15	7.94
07-April-1997	62.45	62.70	37.35	37.60	9.90	11.20	8.11
06-April-1998	64.70	64.95	38.70	38.95	9.90	11.30	8.40
12-April-1999	66.75	67.00	39.95	40.20	9.90	11.35	8.67
10-April-2000	67.50	67.75	40.40	40.65	9.85	11.35	8.77
10-April-2001	72.50	72.75	43.40	43.65	9.70	11.35	9.06
08-April-2002	75.50	75.75	45.20	45.45	9.65	11.35	9.21

¹ See glossary for more details on benefit calculation.

Section 2: Personal details of State Pensioners at March 2002

	Page
Table RP3	State Pensioners by category of pension and age: March 2002.....26
Table RP4	State Pensioners by category of pension and country of residence: March 2002.....27
GB map	State Pensioners as a percentage of the Total Population, By Local Authority: March 2002..... 29
Table RP5	State Pensioners by category of pension and dependency addition payable: March 2002.....30

State Pensioners by category of pension and age: March 2002

RP3

Thousands

	All types	Contributory						Non contributory	
		A	B	ABL	BL	GRB only	AP only	C	D
Men and Women									
All ages	11,147.4	7,325.1	1,440.7	1,081.2	1,175.8	82.8	18.3	* 0.1	23.3
Age 60 - 64	1,346.2	907.9	21.7	187.1	168.2	50.8	10.5	-	-
Age 65 - 69	2,692.6	1,928.0	87.7	345.1	312.9	14.3	4.6	-	-
Age 70 - 79	4,508.1	3,091.4	418.5	471.1	512.7	11.4	3.0	-	-
Age 80 - 89	2,180.2	1,221.1	688.2	77.7	170.2	5.2	* 0.3	-	17.6
Age 90 - 99	397.1	168.1	211.1	* 0.2	11.7	1.2	-	-	4.9
Age 100 +	23.1	8.6	13.5	-	* 0.2	-	-	-	0.8
Men									
All ages	4,146.5	4,130.2	1.1	-	-	7.2	2.9	-	5.0
Age 65 - 69	1,296.1	1,291.3	-	-	-	3.5	1.3	-	-
Age 70 - 79	1,995.9	1,991.0	* 0.5	-	-	3.0	1.5	-	-
Age 80 - 89	764.1	759.2	* 0.5	-	-	0.6	* 0.1	-	3.8
Age 90 - 99	86.4	85.0	* 0.2	-	-	* 0.2	-	-	1.1
Age 100 +	3.9	3.8	-	-	-	-	-	-	* 0.2
Women									
All ages	7,000.8	3,194.9	1,439.6	1,081.2	1,175.8	75.6	15.4	* 0.1	18.2
Age 60 - 64	1,346.2	907.9	21.7	187.1	168.2	50.8	10.5	-	-
Age 65 - 69	1,396.5	636.8	87.7	345.1	312.9	10.8	3.2	-	-
Age 70 - 79	2,512.1	1,100.5	418.0	471.1	512.7	8.3	1.5	-	-
Age 80 - 89	1,416.1	461.9	687.7	77.7	170.2	4.6	* 0.2	-	13.8
Age 90 - 99	310.7	83.0	210.9	* 0.2	11.7	1.0	-	-	3.8
Age 100 +	19.2	4.8	13.5	-	* 0.2	-	-	-	0.7

* Figures 500 and under marked "*" are subject to a high degree of sampling error and should be used only as a guide to the current situation.

State Pensioners by category of pension and country of residence(GOR): March 2002

RP4

Thousands

	All types	Contributory						Non contributory	
		A	B	ABL	BL	GRB only	AP only	C	D
Men and Women									
All countries ¹	11,147.4	7,325.1	1,440.7	1,081.2	1,175.8	82.8	18.3	* 0.1	23.3
England	8,780.5	5,745.0	1,148.9	876.3	917.9	58.2	14.5	* 0.1	19.6
North East	476.1	309.4	68.0	46.7	47.5	3.2	0.6	-	0.7
North West	1,229.4	848.1	144.6	125.3	100.6	7.2	1.4	-	2.3
Yorkshire and the Humber	904.0	579.1	127.9	88.2	100.3	6.3	1.0	-	1.1
East Midlands	756.0	481.3	101.2	78.2	87.3	5.6	1.3	-	1.1
West Midlands	953.5	623.9	124.1	96.1	100.2	6.5	1.3	-	1.5
East of England	1,005.7	640.2	130.8	106.5	118.9	5.9	1.4	-	2.1
London	964.7	656.8	122.3	82.3	86.9	7.8	4.0	-	4.6
South East	1,457.8	946.3	192.6	144.1	159.0	9.5	2.4	-	3.8
South West	1,033.3	660.0	137.4	108.8	117.1	6.2	1.3	-	2.5
Scotland	911.0	630.7	110.4	89.6	72.7	4.7	0.8	-	2.1
Wales	565.6	370.7	80.1	53.8	56.5	2.8	0.7	-	1.0
Channel Islands	13.6	8.5	2.1	0.9	2.0	* 0.1	-	-	-
Overseas	876.5	570.1	99.3	60.6	126.7	17.0	2.4	-	* 0.5
of which:									
frozen rate	479.4	293.5	59.5	31.3	83.9	9.4	1.5	-	* 0.2
Men									
All countries	4,146.5	4,130.2	1.1	-	-	7.2	2.9	-	5.0
England	3,268.9	3,261.5	* 0.4	-	-	0.8	1.9	-	4.3
North East	176.1	176.0	-	-	-	-	-	-	* 0.1
North West	451.0	450.4	* 0.1	-	-	-	* 0.2	-	* 0.3
Yorkshire and the Humber	335.1	334.9	-	-	-	-	-	-	* 0.2
East Midlands	286.7	286.3	-	-	-	* 0.1	* 0.1	-	* 0.2
West Midlands	356.0	355.5	-	-	-	-	* 0.1	-	* 0.3
East of England	382.0	381.3	* 0.1	-	-	-	* 0.2	-	* 0.4
London	351.1	348.3	-	-	-	* 0.5	0.8	-	1.6
South East	544.1	542.9	* 0.1	-	-	* 0.1	* 0.2	-	0.7
South West	386.7	385.9	* 0.1	-	-	-	* 0.2	-	* 0.5
Scotland	321.0	320.6	-	-	-	-	-	-	* 0.3
Wales	212.5	212.4	-	-	-	-	-	-	* 0.1
Channel Islands	5.0	5.0	-	-	-	-	-	-	-
Overseas	339.1	330.8	0.7	-	-	6.4	1.1	-	* 0.2
of which:									
frozen rate	192.2	187.5	* 0.2	-	-	3.6	0.8	-	* 0.1

1. This table excludes a small number of Northern Ireland cases incorrectly included within our sample.

Up to and including September 1999, country totals were derived using PSCS country codes. From March 2000, a new methodology has been used which derives country and Government Office Region codes from the claimant's postcode on P.S.C.S. Due to the improved accuracy of this new methodology, there is a slight discontinuity in the country totals between September 1999 and March 2000.

State Pensioners by category of pension and country of residence(GOR): March 2002

RP4

Thousands

	All types	Contributory						Non contributory	
		A	B	ABL	BL	GRB only	AP only	C	D
Women									
All countries ¹	7,000.8	3,194.9	1,439.6	1,081.2	1,175.8	75.6	15.4	* 0.1	18.2
England	5,511.6	2,483.5	1,148.5	876.3	917.9	57.4	12.7	* 0.1	15.3
North East	300.0	133.4	68.0	46.7	47.5	3.2	0.6	-	0.6
North West	778.3	397.7	144.5	125.3	100.6	7.2	1.1	-	2.0
Yorkshire and the Humber	568.9	244.2	127.9	88.2	100.3	6.3	0.9	-	0.9
East Midlands	469.3	195.1	101.1	78.2	87.3	5.5	1.2	-	0.8
West Midlands	597.5	268.4	124.1	96.1	100.2	6.5	1.2	-	1.2
East of England	623.7	258.9	130.7	106.5	118.9	5.9	1.2	-	1.7
London	613.6	308.5	122.3	82.3	86.9	7.3	3.2	-	3.0
South East	913.8	403.4	192.5	144.1	159.0	9.4	2.2	-	3.1
South West	646.7	274.0	137.3	108.8	117.1	6.2	1.1	-	2.0
Scotland	590.0	310.1	110.4	89.6	72.7	4.6	0.7	-	1.8
Wales	353.1	158.4	80.0	53.8	56.5	2.8	0.7	-	0.9
Channel Islands	8.7	3.5	2.1	0.9	2.0	* 0.1	-	-	-
Overseas	537.4	239.4	98.6	60.6	126.7	10.6	1.3	-	* 0.3
of which:									
frozen rate	287.2	106.0	59.4	31.3	83.9	5.8	0.7	-	* 0.1

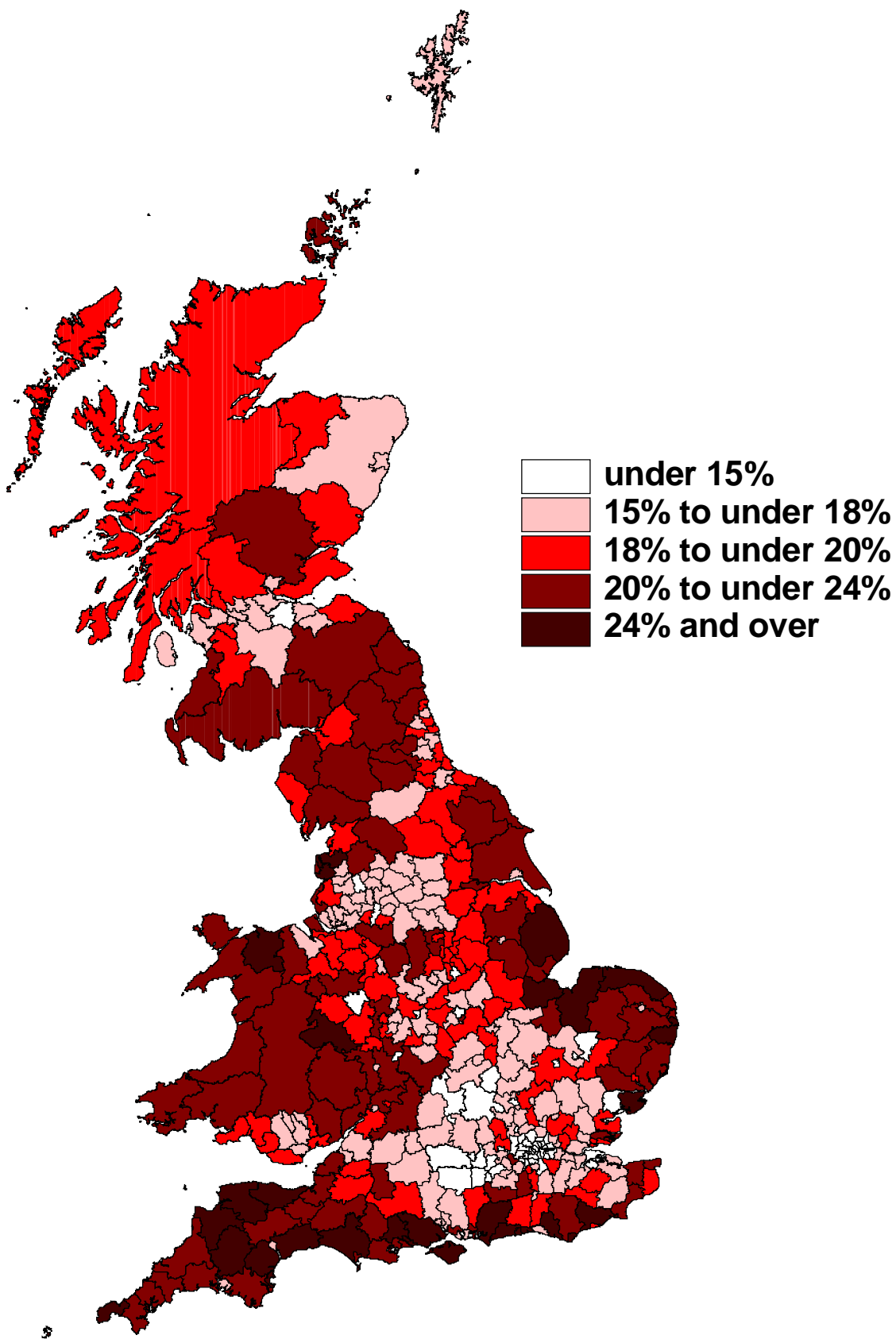
1. This table excludes a small number of Northern Ireland cases incorrectly included within our sample.

Up to and including September 1999, country totals were derived using PSCS country codes.

From March 2000, a new methodology has been used which derives country and Government Office Region codes from the claimant's postcode on P.S.C.S.

Due to the improved accuracy of this new methodology, there is a slight discontinuity in the country totals between September 1999 and March 2000.

State Pensioners as a percentage of the Total Population, by Local Authority: March 2002



State Pensions by category of pension and dependency addition payable: March 2002

RP5

Thousands

	All types	Contributory						Non contributory	
		A	B	ABL	BL	GRB only	AP only	C	D
Men and Women									
Total	11,147.4	7,325.1	1,440.7	1,081.2	1,175.8	82.8	18.3	* 0.1	23.3
Without dependent	11,051.5	7,230.2	1,440.2	1,080.9	1,175.6	82.8	18.3	* 0.1	23.2
With increase of which:	95.9	94.9	* 0.5	* 0.3	* 0.2	-	-	-	-
adult addition	77.0	77.0	-	-	-	-	-	-	-
child addition	11.1	10.1	* 0.5	* 0.3	* 0.2	-	-	-	-
adult & child	7.8	7.8	-	-	-	-	-	-	-
Men									
Total	4,146.5	4,130.2	1.1	-	-	7.2	2.9	-	5.0
Without dependent	4,054.8	4,038.5	1.1	-	-	7.2	2.9	-	5.0
With increase of which:	91.7	91.7	-	-	-	-	-	-	-
adult addition	76.6	76.6	-	-	-	-	-	-	-
child addition	7.2	7.2	-	-	-	-	-	-	-
adult & child	7.8	7.8	-	-	-	-	-	-	-
Women									
Total	7,000.8	3,194.9	1,439.6	1,081.2	1,175.8	75.6	15.4	* 0.1	18.2
Without dependent	6,996.7	3,191.7	1,439.1	1,080.9	1,175.6	75.6	15.4	* 0.1	18.2
With increase of which:	4.2	3.2	* 0.5	* 0.3	* 0.2	-	-	-	-
adult addition	* 0.3	* 0.3	-	-	-	-	-	-	-
child addition	3.8	2.9	* 0.5	* 0.3	* 0.2	-	-	-	-
adult & child	-	-	-	-	-	-	-	-	-

* Figures 500 and under marked "*" are subject to a high degree of sampling error and should be used only as a guide to the current situation.

Section 3: Financial details of State Pensioners at March 2002

	Page
Table RP6	State Pensioners by category of pension and total pension payable: March 2002.....32
Table RP7	State Pensioners by category of pension and total rates payable: March 2002.....34
Table RP8	State Pensioners by category of pension and average rates payable: March 2002.....35
Table RP9	State Pensioners by category of pension and gross additional pension payable: March 2002..... 37
Table RP10	State Pensioners by category of pension and rate of Contracted Out Deduction: March 2002.....38
Table RP11	State Pensioners by category of pension and net additional pension payable: March 2002.....39
Table RP12	State Pensioners by category of pension and rate of net additional pension where the COD is zero: March 2002.....40

State Pensions by category of pension and total pension payable¹ : March 2002

RP6

Thousands

£pw	All		Contributory					Non contributory	
	types	A	B	ABL	BL	GRB only	AP only	C	D
Men and Women									
Total	11,147.4	7,325.1	1,440.7	1,081.2	1,175.8	82.8	18.3	* 0.1	23.3
< 30.00	777.7	463.1	62.0	25.6	126.0	82.8	18.2	-	-
30.00 - 39.99	272.7	196.3	16.3	20.9	39.0	-	* 0.1	-	* 0.1
40.00 - 49.99	2,081.1	193.7	14.4	856.5	994.4	-	-	* 0.1	21.9
50.00 - 59.99	425.0	251.8	14.2	142.3	15.7	-	-	-	1.0
60.00 - 69.99	342.0	290.3	26.7	24.3	0.6	-	-	-	* 0.2
70.00 - 79.99	2,642.8	1,807.4	828.4	6.9	-	-	-	-	* 0.1
80.00 - 89.99	2,048.6	1,816.9	229.0	2.7	-	-	-	-	-
90.00 - 99.99	1,136.8	1,018.1	117.6	1.0	-	-	-	-	-
100.00 - 109.99	513.2	447.4	65.3	0.6	-	-	-	-	-
110.00 - 119.99	324.7	287.8	36.7	* 0.3	-	-	-	-	-
120.00 - 129.99	210.8	194.1	16.6	* 0.1	-	-	-	-	-
130.00 - 139.99	137.6	130.6	7.0	-	-	-	-	-	-
140.00 - 149.99	89.9	86.3	3.5	-	-	-	-	-	-
> 150.00	144.4	141.4	3.0	-	-	-	-	-	-
Average rate (£pw)	72.92	82.17	77.80	45.92	40.80	0.73	3.58	43.35	44.86
Men									
Total	4,146.5	4,130.2	1.1	-	-	7.2	2.9	-	5.0
< 30.00	187.7	177.1	* 0.5	-	-	7.2	2.9	-	-
30.00 - 39.99	68.6	68.4	* 0.1	-	-	-	-	-	* 0.1
40.00 - 49.99	56.5	52.6	-	-	-	-	-	-	3.9
50.00 - 59.99	57.9	57.1	-	-	-	-	-	-	0.8
60.00 - 69.99	76.7	76.5	-	-	-	-	-	-	* 0.2
70.00 - 79.99	852.9	852.5	* 0.3	-	-	-	-	-	* 0.1
80.00 - 89.99	1,244.8	1,244.7	-	-	-	-	-	-	-
90.00 - 99.99	708.4	708.4	-	-	-	-	-	-	-
100.00 - 109.99	276.4	276.4	-	-	-	-	-	-	-
110.00 - 119.99	188.3	188.3	-	-	-	-	-	-	-
120.00 - 129.99	137.3	137.3	-	-	-	-	-	-	-
130.00 - 139.99	101.1	101.1	-	-	-	-	-	-	-
140.00 - 149.99	69.5	69.5	-	-	-	-	-	-	-
> 150.00	120.4	120.4	-	-	-	-	-	-	-
Average rate (£pw)	88.14	88.41	46.10	-	-	0.76	7.59	0.00	47.16

(1) Figures are based on pensioners' entitlement recorded on PSCS at the date of extraction.
The amount of pension actually paid may differ due to adjustments.

* Figures marked "*" are subject to a high degree of sampling error and should be used only as a guide to the correct situation.

**State Pensions by category of pension
and total pension payable¹ : March 2002**

RP6

Thousands

£pw	All types	Contributory					Non contributory		
		A	B	ABL	BL	GRB only	AP only	C	D
Women									
Total	7,000.8	3,194.9	1,439.6	1,081.2	1,175.8	75.6	15.4	* 0.1	18.2
< 30.00	590.0	286.0	61.5	25.6	126.0	75.6	15.3	-	-
30.00 - 39.99	204.1	127.9	16.2	20.9	39.0	-	* 0.1	-	* 0.1
40.00 - 49.99	2,024.5	141.1	14.4	856.5	994.4	-	-	* 0.1	17.9
50.00 - 59.99	367.2	194.7	14.2	142.3	15.7	-	-	-	* 0.2
60.00 - 69.99	265.3	213.7	26.6	24.3	0.6	-	-	-	-
70.00 - 79.99	1,789.9	954.9	828.1	6.9	-	-	-	-	-
80.00 - 89.99	803.8	572.2	229.0	2.7	-	-	-	-	-
90.00 - 99.99	428.3	309.7	117.6	1.0	-	-	-	-	-
100.00 - 109.99	236.8	171.0	65.2	0.6	-	-	-	-	-
110.00 - 119.99	136.4	99.5	36.7	* 0.3	-	-	-	-	-
120.00 - 129.99	73.5	56.8	16.6	* 0.1	-	-	-	-	-
130.00 - 139.99	36.5	29.5	7.0	-	-	-	-	-	-
140.00 - 149.99	20.3	16.8	3.5	-	-	-	-	-	-
> 150.00	24.0	21.0	3.0	-	-	-	-	-	-
Average rate (£pw)	63.90	74.11	77.83	45.92	40.80	0.72	2.81	43.35	44.22

(1) Figures are based on pensioners' entitlement recorded on PSCS at the date of extraction.
The amount of pension actually paid may differ due to adjustments.

* Figures marked "*" are subject to a high degree of sampling error and should be used only as a guide to the correct situation.

State Pensioners by category of pension and total rates payable¹ : March 2002

RP7

£m per week

	All types	Contributory					Non contributory		
		A	B	ABL	BL GRB only	AP only	C	D	
Men and Women									
Total	813.6	603.4	111.4	49.7	48.0	0.1	0.1	*-	1.0
Basic pension	670.1	476.9	98.9	46.1	47.1	-	-	*-	1.0
Net AP	108.6	97.8	8.5	2.2	-	-	0.1	-	*-
GRB	24.0	20.4	2.6	0.5	0.5	0.1	*-	*-	*-
Increments	7.4	5.1	1.1	0.8	0.3	-	*-	-	*-
Age Addition	0.6	0.3	0.2	*-	*-	*-	*-	*-	*-
IVA	3.0	2.9	*-	0.1	*-	-	*-	-	*-
Men									
Total	366.7	366.4	0.1	-	-	*-	*-	-	0.2
Basic pension	281.4	281.1	*-	-	-	-	-	-	0.2
Net AP	65.6	65.5	*-	-	-	-	*-	-	*-
GRB	15.5	15.5	*-	-	-	*-	*-	-	*-
Increments	2.1	2.1	*-	-	-	-	*-	-	*-
Age Addition	0.2	0.2	*-	-	-	*-	*-	-	*-
IVA	2.0	2.0	-	-	-	-	-	-	*-
Women									
Total	446.9	237.0	111.4	49.7	48.0	0.1	*-	*-	0.8
Basic pension	388.7	195.8	98.9	46.1	47.1	-	-	*-	0.8
Net AP	43.1	32.3	8.5	2.2	-	-	*-	-	*-
GRB	8.5	4.9	2.6	0.5	0.5	0.1	*-	*-	*-
Increments	5.2	3.0	1.1	0.8	0.3	-	*-	-	*-
Age Addition	0.4	0.1	0.2	*-	*-	*-	*-	*-	*-
IVA	1.0	0.9	*-	0.1	*-	-	*-	-	*-

(1) Figures are based on the sum of pensioner's entitlement recorded on PSCS at the date of extraction.

As this data relates to a point in time and the actual amounts paid will be subject to adjustments, they may differ from the actual published accounts and PES forecasts.

* Figures marked "*" are subject to a high degree of sampling error and should be used only as a guide to the correct situation.

State Pensions by category of pension and average rates payable¹ : March 2002

RP8

£pw

	All	Contributory						Non contributory	
	types	A	B	ABL	BL	GRB only	AP only	C	D
Men and Women less than age 80									
Basic pension	58.34	64.30	66.37	42.66	39.92	-	-	-	.
Net AP	11.80	15.46	13.30	2.19	-	-	3.05	-	.
GRB	2.17	2.78	2.15	0.44	0.42	0.67	0.28	-	.
Increments	0.43	0.44	0.44	0.67	0.17	-	0.17	-	.
IVA	0.33	0.46	-	0.08	-	-	0.02	-	.
Average rate (£pw)	72.91	83.17	82.70	45.98	40.52	0.68	3.50	-	.
Men less than age 80									
Basic pension	67.66	67.86	25.36	-	-	-	-	-	.
Net AP	18.47	18.52	2.61	-	-	-	6.64	-	.
GRB	3.81	3.82	0.67	-	-	0.71	0.36	-	.
Increments	0.23	0.23	0.14	-	-	-	0.30	-	.
IVA	0.57	0.57	-	-	-	-	-	-	.
Average rate (£pw)	90.34	90.60	30.22	-	-	0.74	7.31	-	.
Women less than age 80									
Basic pension	52.51	59.89	66.41	42.66	39.92	-	-	-	.
Net AP	7.63	11.66	13.31	2.19	-	-	2.39	-	.
GRB	1.14	1.50	2.15	0.44	0.42	0.66	0.26	-	.
Increments	0.56	0.71	0.44	0.67	0.17	-	0.14	-	.
IVA	0.18	0.32	-	0.08	-	-	0.02	-	.
Average rate (£pw)	61.99	73.95	82.75	45.98	40.52	0.68	2.80	-	.

(1) Figures are based on pensioners' entitlement recorded on PSCS at the date of extraction. The amount of pension actually paid may differ due to adjustments. Pensioners with zero entitlement have been included in the calculation of the average £pw figures

* Figures marked "***" are subject to a high degree of sampling error and should be used only as a guide to the correct situation.

State Pensions by category of pension and average rates payable¹ : March 2002

RP8

£pw

	All	Contributory						Non contributory	
	types	A	B	ABL	BL	GRB only	AP only	C	D
Men and Women aged 80 and over									
Basic pension	65.92	68.50	70.01	42.50	41.00	-	-	43.40	43.34
Net AP	2.97	4.42	1.67	0.11	-	-	7.36	-	0.70
GRB	2.09	2.78	1.56	0.51	0.40	1.00	0.53	0.71	0.52
Increments	1.41	1.78	0.98	1.82	0.70	0.00	0.22	-	0.05
Age Addition	0.24	0.24	0.24	0.24	0.23	0.23	0.23	0.25	0.25
IVA	0.07	0.12	-	-	-	-	-	-	-
Average rate (£pw)	72.93	77.94	74.97	45.19	42.33	1.23	8.33	44.36	44.86
Men aged 80 and over									
Basic pension	68.61	68.84	53.00	-	-	-	-	-	43.23
Net AP	5.56	5.58	1.24	-	-	-	12.46	-	2.64
GRB	3.47	3.49	2.11	-	-	0.72	0.41	-	0.87
Increments	1.60	1.61	0.72	-	-	-	0.14	-	0.18
Age Addition	0.24	0.24	0.20	-	-	0.17	0.21	-	0.25
IVA	0.14	0.14	-	-	-	-	-	-	-
Average rate (£pw)	79.65	79.94	58.01	-	-	0.90	13.22	-	47.16
Women aged 80 and over									
Basic pension	64.61	67.97	70.03	42.50	41.00	-	-	43.40	43.37
Net AP	1.70	2.62	1.67	0.11	-	-	2.90	-	0.16
GRB	1.42	1.69	1.56	0.51	0.40	1.04	0.62	0.71	0.42
Increments	1.31	2.05	0.98	1.82	0.70	-	0.30	-	-
Age Addition	0.24	0.24	0.24	0.24	0.23	0.23	0.25	0.25	0.25
IVA	0.03	0.09	-	-	-	-	-	-	-
Average rate (£pw)	69.64	74.87	74.98	45.19	42.33	1.27	4.06	44.36	44.22

(1) Figures are based on pensioners' entitlement recorded on PSCS at the date of extraction.

The amount of pension actually paid may differ due to adjustments. Pensioners with zero Entitlement have been included in the calculation of the average £pw figures.

* Figures marked "***" are subject to a high degree of sampling error and should be used only as a guide to the correct situation.

State Pensions by category of pension and gross Additional Pension payable¹ : March 2002

RP9

Thousands

£pw	All types	Contributory						Non contributory	
		A	B	ABL	BL	GRB only	AP only	C	D
Men and Women									
Total	11,147.4	7,325.1	1,440.7	1,081.2	1,175.8	82.8	18.3	*0.1	23.3
zero	4,336.4	1,557.5	837.4	662.4	1,175.8	82.8	-	*0.1	20.3
< £5.00	1,479.4	1,045.2	173.6	244.3	-	-	14.7	-	1.6
£5.00 - £9.99	693.4	522.7	101.9	66.3	-	-	1.9	-	0.5
£10.00 - £19.99	1,079.0	887.2	130.4	59.5	-	-	1.4	-	0.6
£20.00 - £29.99	811.8	710.3	75.8	25.2	-	-	* 0.3	-	* 0.2
£30.00 - £39.99	664.1	603.4	48.3	12.1	-	-	* 0.2	-	* 0.1
£40.00 - £49.99	548.5	513.2	29.9	5.4	-	-	-	-	-
£50.00 - £59.99	444.6	423.3	18.0	3.3	-	-	-	-	-
> £60.00	1,090.2	1,062.3	25.2	2.8	-	-	-	-	-
Average rate (£pw)	18.24	25.82	7.47	3.09	-	-	3.53	-	0.91
Men									
Total	4,146.5	4,130.2	1.1	-	-	7.2	2.9	-	5.0
zero	566.2	554.8	0.9	-	-	7.2	-	-	3.2
< £5.00	534.8	532.3	* 0.1	-	-	-	1.7	-	0.7
£5.00 - £9.99	234.0	233.3	-	-	-	-	* 0.4	-	* 0.3
£10.00 - £19.99	461.4	460.3	* 0.1	-	-	-	0.6	-	* 0.5
£20.00 - £29.99	418.8	418.4	-	-	-	-	* 0.2	-	* 0.2
£30.00 - £39.99	395.6	395.5	-	-	-	-	-	-	* 0.1
£40.00 - £49.99	366.8	366.8	-	-	-	-	-	-	-
£50.00 - £59.99	321.9	321.9	-	-	-	-	-	-	-
> £60.00	846.9	846.9	-	-	-	-	-	-	-
Average rate (£pw)	32.77	32.89	2.28	-	-	-	7.71	-	3.53
Women									
Total	7,000.8	3,194.9	1,439.6	1,081.2	1,175.8	75.6	15.4	*0.1	18.2
zero	3,770.2	1,002.7	836.5	662.4	1,175.8	75.6	-	*0.1	17.1
< £5.00	944.6	512.9	173.6	244.3	-	-	13.0	-	0.8
£5.00 - £9.99	459.4	289.5	101.9	66.3	-	-	1.4	-	* 0.2
£10.00 - £19.99	617.6	426.9	130.4	59.5	-	-	0.8	-	* 0.1
£20.00 - £29.99	393.0	291.9	75.8	25.2	-	-	* 0.1	-	-
£30.00 - £39.99	268.4	207.9	48.3	12.1	-	-	* 0.1	-	-
£40.00 - £49.99	181.7	146.4	29.9	5.4	-	-	-	-	-
£50.00 - £59.99	122.7	101.4	18.0	3.3	-	-	-	-	-
> £60.00	243.3	215.4	25.2	2.8	-	-	-	-	-
Average rate (£pw)	9.64	16.68	7.48	3.09	-	-	2.73	-	0.19

(1) Figures are based on pensioners' entitlement recorded on PSCS at the date of extraction.

The amount of pension actually paid may differ due to adjustments. Pensioners with zero entitlement have been included in the calculation of the average £pw figures.

* Figures marked "*" are subject to a high degree of sampling error and should be used only as a guide to the correct situation.

**State Pensions by category of pension
and rate of Contracted Out Deduction¹ : March 2002**

RP10

Thousands

£pw	All types	Contributory						Non contributory	
		A	B	ABL	BL	GRB only	AP only	C	D
Men and Women									
Total	11,147.4	7,325.1	1,440.7	1,081.2	1,175.8	82.8	18.3	*0.1	23.3
zero	7,339.2	3,971.0	1,096.1	975.4	1,174.7	82.3	17.1	*0.1	22.3
< £5.00	845.3	595.9	202.2	44.7	1.0	* 0.4	0.6	-	0.5
£5.00 - £9.99	550.2	456.2	71.7	21.7	* 0.1	-	* 0.3	-	* 0.2
£10.00 - £19.99	713.8	643.9	48.1	21.5	-	-	* 0.1	-	* 0.1
£20.00 - £29.99	465.1	440.6	14.9	9.5	-	-	* 0.1	-	-
£30.00 - £39.99	343.4	332.7	6.1	4.6	-	-	-	-	-
£40.00 - £49.99	256.7	252.9	1.7	2.2	-	-	-	-	-
£50.00 - £59.99	203.2	202.1	* 0.1	1.0	-	-	-	-	-
> £60.00	430.4	429.8	-	0.6	-	-	-	-	-
Average rate (£pw)	8.55	12.55	1.54	1.05	-	0.01	0.41	-	0.22
Men									
Total	4,146.5	4,130.2	1.1	-	-	7.2	2.9	-	5.0
zero	1,998.5	1,983.0	1.1	-	-	7.2	2.7	-	4.5
< £5.00	220.0	219.8	-	-	-	-	* 0.1	-	* 0.1
£5.00 - £9.99	236.6	236.2	-	-	-	-	* 0.1	-	* 0.2
£10.00 - £19.99	398.8	398.6	-	-	-	-	* 0.1	-	* 0.1
£20.00 - £29.99	306.2	306.2	-	-	-	-	-	-	-
£30.00 - £39.99	249.8	249.8	-	-	-	-	-	-	-
£40.00 - £49.99	202.0	202.0	-	-	-	-	-	-	-
£50.00 - £59.99	167.2	167.2	-	-	-	-	-	-	-
> £60.00	367.4	367.4	-	-	-	-	-	-	-
Average rate (£pw)	17.10	17.16	0.46	-	-	-	0.79	-	0.89
Women									
Total	7,000.8	3,194.9	1,439.6	1,081.2	1,175.8	75.6	15.4	*0.1	18.2
zero	5,340.7	1,988.0	1,095.0	975.4	1,174.7	75.1	14.4	*0.1	17.9
< £5.00	625.3	376.1	202.2	44.7	1.0	* 0.4	0.6	-	* 0.4
£5.00 - £9.99	313.6	219.9	71.6	21.7	* 0.1	-	* 0.3	-	-
£10.00 - £19.99	315.0	245.3	48.1	21.5	-	-	* 0.1	-	-
£20.00 - £29.99	158.9	134.5	14.9	9.5	-	-	* 0.1	-	-
£30.00 - £39.99	93.6	82.9	6.1	4.6	-	-	-	-	-
£40.00 - £49.99	54.8	50.9	1.7	2.2	-	-	-	-	-
£50.00 - £59.99	36.0	34.9	* 0.1	1.0	-	-	-	-	-
> £60.00	63.1	62.4	-	0.6	-	-	-	-	-
Average rate (£pw)	3.49	6.59	1.55	1.05	-	0.01	0.34	-	0.03

(1) Figures are based on pensioners' COD recorded on PSCS at the date of extraction.

The amount of pension actually paid may differ due to adjustments. Pensioners with zero COD have been included in the calculation of the average £pw figures.

* Figures marked "***" are subject to a high degree of sampling error and should be used only as a guide to the correct situation.

**State Pensions by category of pension
and net Additional Pension payable¹ : March 2002**

RP11

Thousands

£pw	All types	Contributory						Non contributory	
		A	B	ABL	BL	GRB only	AP only	C	D
Men and Women									
Total	11,147.4	7,325.1	1,440.7	1,081.2	1,175.8	82.8	18.3	* 0.1	23.3
zero	4,445.1	1,661.6	838.4	666.0	1,175.8	82.8	-	* 0.1	20.3
< £5.00	1,915.8	1,441.2	187.9	269.8	-	-	15.1	-	1.8
£5.00 - £9.99	1,332.9	1,134.0	118.4	78.0	-	-	1.8	-	0.7
£10.00 - £19.99	1,739.2	1,545.9	143.0	48.9	-	-	1.1	-	* 0.4
£20.00 - £29.99	658.0	570.8	75.0	12.0	-	-	* 0.2	-	* 0.1
£30.00 - £39.99	380.6	336.0	40.6	3.9	-	-	* 0.1	-	* 0.1
£40.00 - £49.99	247.8	225.5	21.0	1.3	-	-	-	-	-
£50.00 - £59.99	159.6	149.9	9.0	0.7	-	-	-	-	-
> £60.00	268.3	260.2	7.5	0.6	-	-	-	-	-
Average rate (£pw)	9.74	13.35	5.93	2.04	-	-	3.12	-	0.70
Men									
Total	4,146.5	4,130.2	1.1	-	-	7.2	2.9	-	5.0
zero	656.9	645.5	0.9	-	-	7.2	-	-	3.2
< £5.00	803.2	800.6	* 0.1	-	-	-	1.7	-	0.8
£5.00 - £9.99	685.8	684.7	-	-	-	-	0.5	-	0.5
£10.00 - £19.99	995.2	994.3	-	-	-	-	* 0.5	-	* 0.3
£20.00 - £29.99	331.0	330.7	-	-	-	-	* 0.1	-	* 0.1
£30.00 - £39.99	202.9	202.9	-	-	-	-	-	-	* 0.1
£40.00 - £49.99	150.6	150.6	-	-	-	-	-	-	-
£50.00 - £59.99	109.7	109.6	-	-	-	-	-	-	-
> £60.00	211.2	211.2	-	-	-	-	-	-	-
Average rate (£pw)	15.81	15.86	1.83	-	-	-	6.92	-	2.64
Women									
Total	7,000.8	3,194.9	1,439.6	1,081.2	1,175.8	75.6	15.4	* 0.1	18.2
zero	3,788.2	1,016.1	837.5	666.0	1,175.8	75.6	-	* 0.1	17.1
< £5.00	1,112.6	640.6	187.8	269.8	-	-	13.4	-	0.9
£5.00 - £9.99	647.1	449.3	118.4	78.0	-	-	1.3	-	* 0.1
£10.00 - £19.99	744.0	551.6	142.9	48.9	-	-	0.6	-	-
£20.00 - £29.99	327.0	240.0	74.9	12.0	-	-	* 0.1	-	-
£30.00 - £39.99	177.7	133.1	40.6	3.9	-	-	* 0.1	-	-
£40.00 - £49.99	97.3	75.0	21.0	1.3	-	-	-	-	-
£50.00 - £59.99	49.9	40.2	9.0	0.7	-	-	-	-	-
> £60.00	57.1	49.0	7.5	0.6	-	-	-	-	-
Average rate (£pw)	6.15	10.10	5.93	2.04	-	-	2.39	-	0.16

(1) Figures are based on pensioners' entitlement recorded on PSCS at the date of extraction.

The amount of pension actually paid may differ due to adjustments. Pensioners with zero entitlement have been included in the calculation of the average £pw figures.

* Figures marked "*" are subject to a high degree of sampling error and should be used only as a guide to the correct situation.

State Pensions¹ by category of pension and rate of net Additional Pension where the COD is zero² : March 2002

RP12

Thousands

£pw	All types	Contributory						Non contributory	
		A	B	ABL	BL	GRB only	AP only	C	D
Men and Women									
Total	7,339.2	3,971.0	1,096.1	975.4	1,174.7	82.3	17.1	* 0.1	22.3
zero	4,319.8	1,548.0	832.9	661.3	1,174.7	82.3	-	* 0.1	20.3
< £5.00	1,238.3	884.0	117.7	220.9	-	-	14.2	-	1.4
£5.00 - £9.99	391.0	298.3	44.7	46.1	-	-	1.6	-	* 0.3
£10.00 - £19.99	469.0	389.5	46.1	32.1	-	-	1.0	-	* 0.2
£20.00 - £29.99	276.6	244.1	23.0	9.2	-	-	* 0.2	-	* 0.1
£30.00 - £39.99	195.8	178.0	14.3	3.4	-	-	* 0.1	-	* 0.1
£40.00 - £49.99	141.5	132.4	8.0	1.1	-	-	-	-	-
£50.00 - £59.99	102.1	97.0	4.4	0.7	-	-	-	-	-
> £60.00	205.2	199.6	4.9	0.6	-	-	-	-	-
Average rate (£pw)	7.30	12.28	2.93	1.59	-	-	3.07	-	0.47
Men									
Total	1,998.5	1,983.0	1.1	-	-	7.2	2.7	-	4.5
zero	561.9	550.5	0.9	-	-	7.2	-	-	3.2
< £5.00	470.7	468.2	* 0.1	-	-	-	1.6	-	0.7
£5.00 - £9.99	134.4	133.8	-	-	-	-	* 0.4	-	* 0.2
£10.00 - £19.99	204.1	203.4	-	-	-	-	* 0.5	-	* 0.2
£20.00 - £29.99	149.8	149.6	-	-	-	-	* 0.1	-	* 0.1
£30.00 - £39.99	123.9	123.8	-	-	-	-	-	-	* 0.1
£40.00 - £49.99	102.0	102.0	-	-	-	-	-	-	-
£50.00 - £59.99	78.6	78.5	-	-	-	-	-	-	-
> £60.00	173.2	173.2	-	-	-	-	-	-	-
Average rate (£pw)	17.81	17.93	1.26	-	-	-	7.04	0.00	2.00
Women									
Total	5,340.7	1,988.0	1,095.0	975.4	1,174.7	75.1	14.4	* 0.1	17.9
zero	3,757.9	997.4	832.0	661.3	1,174.7	75.1	-	* 0.1	17.1
< £5.00	767.6	415.8	117.6	220.9	-	-	12.6	-	0.7
£5.00 - £9.99	256.6	164.5	44.7	46.1	-	-	1.2	-	* 0.1
£10.00 - £19.99	264.9	186.2	46.1	32.1	-	-	* 0.5	-	-
£20.00 - £29.99	126.8	94.5	23.0	9.2	-	-	* 0.1	-	-
£30.00 - £39.99	72.0	54.2	14.3	3.4	-	-	* 0.1	-	-
£40.00 - £49.99	39.5	30.4	8.0	1.1	-	-	-	-	-
£50.00 - £59.99	23.6	18.5	4.4	0.7	-	-	-	-	-
> £60.00	32.0	26.4	4.9	0.6	-	-	-	-	-
Average rate (£pw)	3.37	6.65	2.93	1.59	-	-	2.32	-	0.08

(1) Figures are based on pensioners' entitlement recorded on PSCS at the date of extraction.

The amount of pension actually paid may differ due to adjustments. Pensioners with zero entitlement have been included in the calculation of the average £pw figures.

(2) This table includes pensioners who have not contracted out of SERPS.

* Figures marked "*" are subject to a high degree of sampling error and should be used only as a guide to the correct situation.

Appendix A

Sampling error

The data contained in this publication are based on 5% of the total 'live', GB cases held on the Pensions Strategy Computer System. The 5% sample contains all the characteristics of the complete set of records held on the PSCS. Therefore, if the number of cases in a sample with characteristic A is 500, we can say that the number of cases with characteristic A on the PSCS is equal to 500 multiplied by 20, i.e. 10,000 cases. The sample taken is just one of many different samples which could be taken, therefore the total calculated number of cases with characteristic A is only an estimate of the actual number of cases. If another sample had been taken then the estimate for the same characteristic may have been slightly different. The table contained in this appendix shows the amount of variation that can be expected from the estimated number of cases with a certain characteristic. For example, if from a 5% sample there are 500 cases with characteristic A then the estimated number of cases on the PSCS with the same characteristic is 10,000. We could reasonably expect the actual figure to lie between 9,150 and 10,850.

Formula

Two formulae are used to calculate the standard error and the associated confidence intervals. For samples with less than 30 cases the binomial distribution is used to calculate the standard error. For samples with greater than 30 cases the normal approximation to the binomial is used. The normal approximation formula used to calculate the standard error is:

$\sqrt{(1-F)S} \frac{1}{F}$, Where F is the sampling fraction (e.g. 0.05 for a 5% sample) and S is the number of sample cases with the characteristic.

In an example where there were 50 sample cases with characteristic A taken from a sample representing 5% of the population, the standard error is:

$$\sqrt{(1-0.05)50} \frac{1}{0.05} = 137.8... \approx 138$$

There is a 95% probability that the actual population value falls within 1.96 standard errors of the grossed up sample value. For the above example this would be:

$$(50/0.05) \pm 1.96 * 138 = (730, 1270)$$

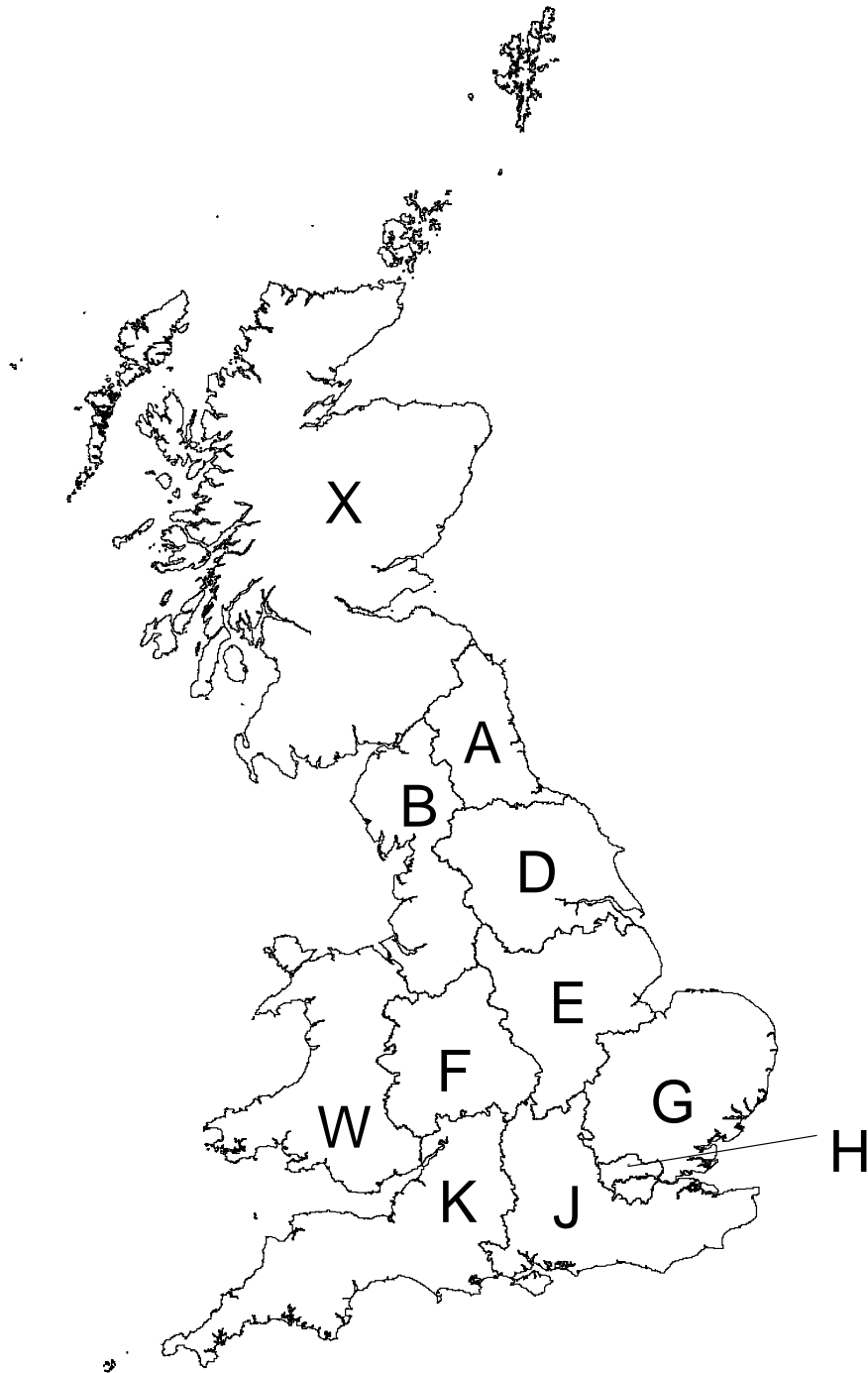
This range is known as the 95% confidence interval.

Please note that this method can only be applied to estimates of number of cases and not to estimating the sampling error associated with averages such as average weekly pension etc.

Table A1: Confidence Intervals for a 5% sample

Estimated value	95% confidence interval	Confidence interval as a % of the estimate
0	0 to 60	.
100	34 to 230	.
300	171 to 490	.
500	328 to 732	.
1,000	+/- 270	+/- 27.0%
2,500	+/- 427	+/- 17.1%
5,000	+/- 604	+/- 12.1%
10,000	+/- 850	+/- 8.5%
25,000	+/- 1350	+/- 5.4%
50,000	+/- 1910	+/- 3.8%
100,000	+/- 2700	+/- 2.7%
1,000,000	+/- 9000	+/- 0.9%

Appendix B Illustration of Government Office Regions



A	North East	H	London
B	North West	J	South East
D	Yorkshire and Humberside	K	South West
E	East Midlands	W	Wales
F	West Midlands	X	Scotland
G	East of England		

