



# First Release

13th May 2009  
IFD110209SSMAY09

Coverage: Great Britain (unless otherwise stated)

Theme: Social and Welfare

**DWP** Department for Work and Pensions

**Issued by:**

Information Directorate  
Department for Work and Pensions

Telephone:  
Press Office: 0203 267 5144

Website:  
[www.dwp.gov.uk](http://www.dwp.gov.uk)

**Statistician:**

Nigel Brough  
Information Directorate  
Department for Work and Pensions  
Room BP 5201  
Benton Park Road  
Newcastle – upon –Tyne  
NE98 1YX

Telephone: 0191 216 6769  
Email:  
[nigel.brough1@dwp.gsi.gov.uk](mailto:nigel.brough1@dwp.gsi.gov.uk)

**Next publication:** August 2009

## DWP QUARTERLY STATISTICAL SUMMARY

### Introduction

This Statistical Summary aims to give users a structured overview of the National Statistics published by the Department for Work and Pensions (DWP). Statistics are grouped by component area of DWP and, for each statistic; links are given for users to access more detailed information.

Key benefit statistics and New Deal statistics from 100% sources are available on an internet-based tabulation tool. A similar tabulation tool derived from 5% sample data is also available, however wherever possible 100% data should be used in preference to 5% estimates, as they are more accurate and form DWP's headline statistics. Data is also released via the NOMIS website and the Neighbourhood Statistics website.

The latest National Statistics on benefit claimants, employment programmes, labour market decisions and vacancies produced by DWP were released on 13th May 2009 according to the arrangements approved by the UK Statistics Authority. Not all DWP National Statistics are covered by this release. Some statistics have their own first releases, but links to these are given throughout.

### Key Findings

- There were 5.4 million working age benefit claimants at November 2008. This is an increase of 278 thousand in the year to November 2008.
  - Employment and Support Allowance (ESA) was introduced on 27<sup>th</sup> October 2008. Early indications show there were around 51 thousand people claiming Employment and Support Allowance at the end of November 2008.
  - The number of working age claimants of Employment and Support Allowance (ESA) and incapacity benefits totals 2.6 million in November 2008. This figure is 39 thousand lower than November 2007 but is at least 13 thousand higher than the previous quarter. With the exception of a small rise in November 2007, this is the first increase in the caseload since August 2004.
- Note – The above ESA and working age client group figures are provisional; see notes to editors section 8
- The number of lone parents claiming Income Support decreased by 13 thousand to 729 thousand in the year to November 2008.
  - 3.35 million people had started on a New Deal programme up to February 2009. To date, 2.14 million people have gained a job through the New Deal programme, with 108 thousand people gaining a job through Employment Zones up to January 2009.
  - At November 2008, there were 12.4 million people of state pension age claiming a key benefit, an increase of 214 thousand since November 2007. Of these, 66% were claiming State Pension only.
  - At November 2008, there were 12.2 million claimants of State Pension, a rise of 220 thousand on a year earlier. Of these, 38% were male and 62% female.
  - At November 2008, there were 2.73 million claimants of Pension Credit (3.34 million including partners), a fall of 3 thousand on a year earlier. Of these, 901 thousand claimed Guarantee Credit only, 1.23 million claimed Guarantee and Savings Credit, and 598 thousand were claiming Savings Credit only.
  - At the end of March 2009, the total Child Support Agency (CSA) caseload stood at 1.28 million cases, of which 54% were current scheme cases.
  - At November 2008, there were 3.02 million recipients of Disability Living Allowance (DLA). This is the first time the DLA caseload has reached over 3 million.
  - At November 2008, there were 496 thousand recipients of Carer's Allowance, and 1.58 million recipients of Attendance Allowance.



## Contents

### 1. Working Age

	<i>Page</i>
1.1 Working age Client Group	3
Individual Benefits	
1.2 Jobseeker's Allowance	6
1.3 Incapacity Benefit & Severe Disablement Allowance	7
1.4 Income Support	9
1.5 Housing Benefit	10
1.6 Council Tax Benefit	10
1.7 Widow's Benefit & Bereavement Benefit	11
1.8 Fraud and Error statistics (links only)	12
1.9 Take-Up of income-related benefits (links only)	12
1.10 Jobseeker's Allowance sanctions and disallowances	12
1.11 New Deals & Employment Zones	13
1.12 Vacancies handled by Jobcentre Plus	14

### 2. Pensioners

2.1 Pensioner Client Group	15
Individual Benefits	
2.2 State Pension	16
2.3 Pension Credit	17

### 3. Disabled and Carers

3.1 Disability Living Allowance	18
3.2 Attendance Allowance	18
3.3 Carer's Allowance	19
3.4 Industrial Injuries Disablement Benefit	20

### 4. Families & Children

4.1 Child Support Agency cases	21
--------------------------------	----

### 5. Appeals Service

5.1 Appeals Service lodgements	23
Notes to Editors	24



## 1. Working Age

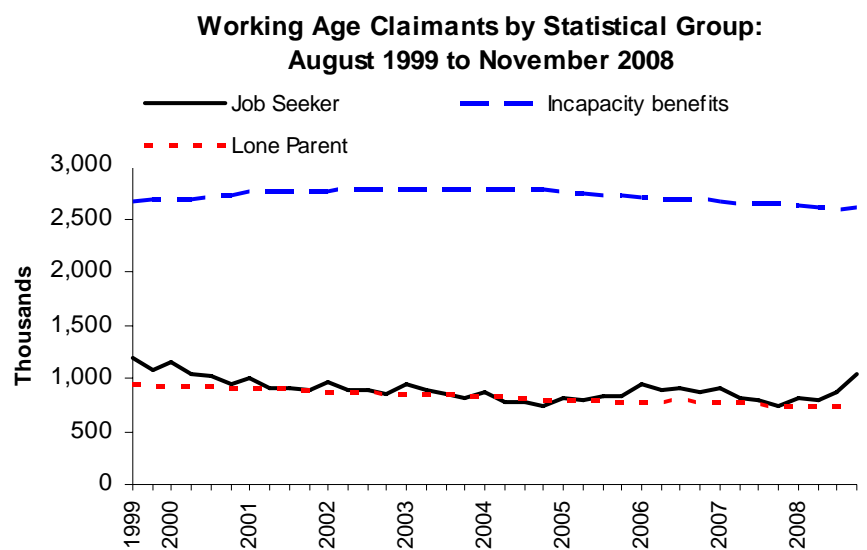
### 1.1 Working Age client group

Combines data collected for Jobseeker's Allowance, Incapacity Benefit, Employment and Support Allowance, Severe Disablement Allowance, Disability Living Allowance, Carer's Allowance, Widow's Benefit, Bereavement Benefit and Income Support for working age claimants (including Pension Credit for males aged 60 to 64).

The figures relating to Employment Support Allowance have been thoroughly quality assured to National Statistics standard however it should be noted that this is a new benefit using a new data source which may not have reached steady state in terms of operational processing and retrospection. Hence ESA and working age client group figures (excluding Jobseekers Allowance) for November 2008 are provisional.

Between November 2000 and November 2007, the number of jobseekers fell from 949 thousand to 741 thousand. However, it has risen to 1.04 million at November 2008. The preferred source of JSA figures is the ONS claimant count measure (which is seasonally adjusted) and this has been rising since January 2008.

The number of working age claimants of Employment and Support Allowance (ESA) and incapacity benefits totals 2.6 million in November 2008. This shows a year-on-year decrease of 39 thousand but a small increase of 13 thousand on the previous quarter.



Headline figures for Incapacity Benefit and Severe Disablement Allowance are shown in Table 1.2 and differ to figures shown in Table 1.1 due to the inclusion of ESA in table 1.1.

The lone parent caseload fell from 906 thousand to 729 thousand between November 2000 and November 2008.

**Please note that the on-line tabulation tool for this client group for November 2008 has been withdrawn while development work to embed ESA is undertaken.**



Table 1.1 Working Age claimants by Statistical Group: August 1999 – November 2008

	Total	Job Seeker <sup>2</sup>	Employment and Support Allowance and incapacity benefits <sup>3</sup>	Lone Parent <sup>4</sup>	Carer <sup>5</sup>	Other Income Related <sup>6</sup>	Disabled <sup>7</sup>	Bereaved <sup>8</sup>
Aug -99	"	1,181.86	2,655.38	945.06	316.13	221.31	"	"
Nov -99	"	1,083.03	2,674.71	930.24	316.50	218.37	"	"
Feb -00	"	1,154.97	2,676.39	923.47	313.58	216.97	"	"
May -00	"	1,037.01	2,686.30	919.43	310.88	210.80	"	"
Aug -00	"	1,015.83	2,714.85	920.10	309.67	197.95	"	"
Nov -00	"	948.66	2,722.57	905.76	311.56	196.69	"	"
Feb -01	"	1,001.08	2,750.45	908.21	313.96	182.81	"	"
May -01	"	909.15	2,753.66	900.43	319.59	180.15	"	"
Aug -01	"	907.68	2,763.62	900.22	323.83	175.41	"	"
Nov -01	"	880.36	2,746.02	878.59	328.62	179.08	"	"
Feb -02	"	955.45	2,745.58	877.11	332.02	176.62	"	"
May -02	5,455.75	877.38	2,765.73	870.95	335.79	165.60	245.27	195.02
Aug -02	5,481.48	890.54	2,769.36	875.04	339.91	167.19	249.72	189.71
Nov -02	5,428.63	850.05	2,776.56	856.23	343.72	161.36	256.58	184.13
Feb -03	5,514.28	946.16	2,776.54	848.85	346.17	156.33	260.92	179.32
May -03	5,459.68	885.78	2,773.61	855.81	347.94	155.96	266.25	174.33
Aug -03	5,425.85	851.37	2,777.06	851.73	350.41	155.26	270.15	169.88
Nov -03	5,363.74	803.88	2,780.49	831.75	353.25	154.20	275.51	164.67
Feb -04	5,426.42	867.42	2,777.53	830.25	355.81	155.20	280.13	160.09
May -04	5,327.35	777.40	2,772.85	823.27	359.25	155.42	283.33	155.83
Aug -04	5,321.26	769.25	2,774.93	818.10	360.08	158.20	289.12	151.59
Nov -04	5,270.77	741.06	2,772.18	796.53	361.42	157.94	294.15	147.49
Feb -05	5,327.77	819.68	2,757.65	793.13	362.04	153.93	297.23	144.11
May -05	5,289.13	800.66	2,741.62	789.32	363.76	151.09	300.96	141.73
Aug -05	5,302.72	825.11	2,725.47	789.35	365.08	153.71	305.84	138.17
Nov -05	5,287.66	836.71	2,710.50	778.56	363.34	155.74	309.31	133.51
Feb -06	5,384.74	935.20	2,705.47	777.10	368.66	153.06	313.85	131.40
May -06	5,325.77	895.88	2,688.02	774.86	368.50	152.70	317.04	128.78
Aug -06	5,335.22	900.92	2,683.00	783.19	369.81	153.12	319.13	126.06
Nov -06	5,288.35	860.22	2,672.97	775.62	371.71	161.10	326.64	120.09
Feb -07	5,321.68	904.04	2,662.13	771.35	373.83	163.32	329.75	117.26
May -07	5,207.27	807.27	2,643.21	765.62	374.84	167.05	335.14	114.15
Aug -07	5,187.14	788.45	2,641.11	763.55	376.03	167.84	340.61	109.55
Nov -07	5,124.68	741.10	2,641.70	741.83	379.35	167.29	346.16	107.25
Feb -08	5,174.88	806.70	2,617.88	741.71	384.49	169.95	349.38	104.78
May -08	5,142.63	787.87	2,595.83	738.64	387.56	173.33	356.50	102.90
Aug -08	5,232.88	868.73	2,590.61	744.68	392.73	176.23	360.08	99.81
Nov -08 <sup>11</sup>	5,402.34	1,036.48	2,603.16	729.02	396.83	178.90	360.88	97.06

Source: DWP Work and Pensions Longitudinal Study

**Notes:**

See page 5 for notes on Table 1.1



### **Notes relating to Table 1.1**

1. Claimants have been assigned to a statistical group according to a hierarchy. The order is shown in the table, i.e. 'Job Seekers' followed by 'Employment and Support Allowance and incapacity benefits'.
2. 'Job Seekers' are recipients of Jobseeker's Allowance.
3. 'From November 2008 the "incapacity benefits group" includes Employment and Support Allowance (ESA). ESA replaced Incapacity Benefit and Income Support paid on the grounds of incapacity for new claims from 27th October 2008. Prior to this the "incapacity benefits group" referred to claimants of Incapacity Benefit (including credits only) or Severe Disablement Allowance including people claiming IS on the grounds of Incapacity.
4. 'Lone Parents' are single recipients of Income Support with a child under 16.
5. 'Carers' are recipients of Carers Allowance.
6. 'Others on Income Related Benefit' are other recipients of Income Support (including Income Support Disability Premium) or Pension Credit.
7. 'Disabled' are recipients of Disability Living Allowance. Industrial Injuries benefits data is not available.
8. 'Bereaved' are recipients of Widow's Benefit or Bereavement Benefit.
9. Totals are not shown prior to May 2002 as Disability Living Allowance data is not available. Also means that complete data for 'Disabled' and 'Bereaved' statistical groups are not available either.
10. Housing Benefit and Council Tax Benefit data are not currently available but are work in progress.
11. The figures relating to Employment Support Allowance have been thoroughly quality assured to National Statistics standard however it should be noted that this is a new benefit using a new data source which may not have reached steady state in terms of operational processing and retrospection. Hence ESA and working age client group figures (excluding Jobseekers Allowance) for November 2008 are provisional.

Latest statistical data available from:	<a href="http://www.dwp.gov.uk/asd/tabtool.asp">http://www.dwp.gov.uk/asd/tabtool.asp</a>
---	---



## 1.2 Jobseeker's Allowance

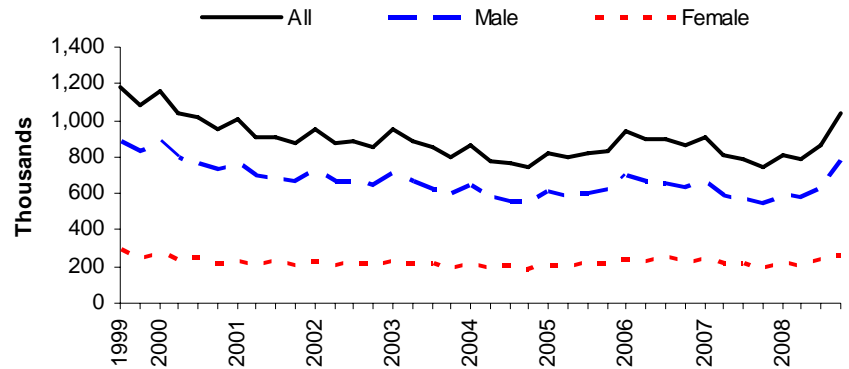
*Jobseeker's Allowance (JSA) was introduced on 7th October 1996 and has both contributory and income-related elements. It is paid to people under state pension age who are available for and actively seeking work of at least forty hours per week.*

The preferred source of JSA figures is the ONS claimant count measure (which is seasonally adjusted) and this has been rising since January 2008.

DWP produce a separate set of Jobseeker's Allowance figures to enable cross-benefit analysis and supply a wider range of breakdowns, and these are provided in this release.

The DWP figures at November 2008 show the total number of Jobseeker's Allowance claimants was 1.04 million. Female claimants represented 25% of the JSA caseload (262 thousand), while males represented 75% (775 thousand). The total caseload has risen by 295 thousand since November 2007.

**Jobseekers Allowance by Gender:  
August 1999 to November 2008**



Latest statistical data available from:

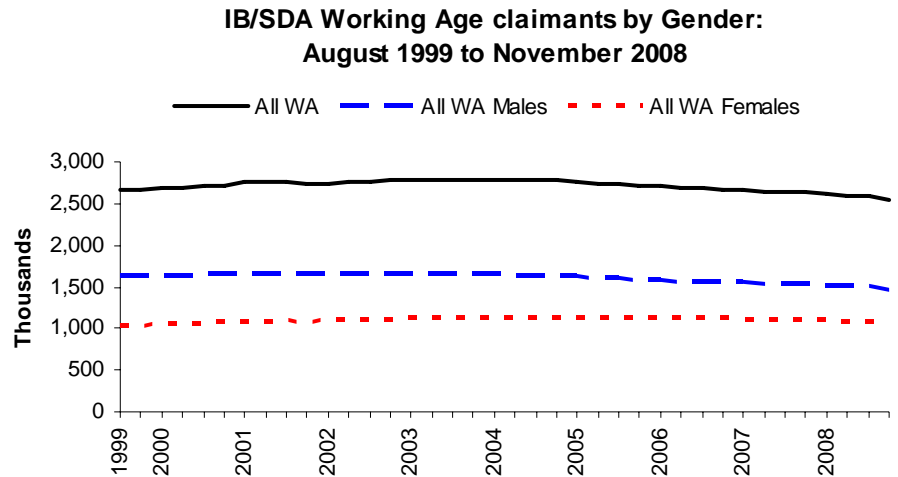
<http://www.dwp.gov.uk/asd/tabtool.asp>



### 1.3 Incapacity Benefit and Severe Disablement Allowance

Incapacity benefits consist of Incapacity Benefit (introduced on 13th April 1995 and paid to people who are incapable of work and who have paid sufficient contributions throughout their working life) and Severe Disablement Allowance (SDA). From 27th October 2008, Employment & Support Allowance (ESA) replaced Incapacity Benefit and Income Support paid on the grounds of incapacity for new claims. **Claimants of ESA are not included in the November 2008 figures in section 1.3.**

At November 2008, there were 2.6 million working age claimants of incapacity benefits (Incapacity Benefit or Severe Disablement Allowance), a decrease of 90 thousand on a year earlier. 58% of claimants were men and 42% women. Both the male and female caseloads are now falling: males by 57 thousand and females by 33 thousand in the year to November 2008.



At November 2008, 61% (1.56 million) of working age claimants were beneficiaries (i.e. were paid Incapacity Benefit or Severe Disablement Allowance), with the remaining 1 million receiving National Insurance Credits, many of whom also receive income Support. A further 41 thousand were claimants above state pension age: these were almost all recipients of Severe Disablement Allowance.

Latest statistical data available from: <http://www.dwp.gov.uk/asd/tabtool.asp>

**Table 1.2 Incapacity benefits claimants & beneficiaries: August 1999 – November 2008**  
 Figures exclude Employment and Support allowance claimants

Thousands

	All IB/SDA claimants <sup>1,2</sup>			All IB/SDA beneficiaries <sup>1,2</sup>		
	All ages	Working Age	State Pension Age	All ages	Working Age	State Pension Age
Aug -99	2,732.50	2,655.46	77.05	1,978.56	1,902.14	76.42
Nov -99	2,738.13	2,674.81	63.32	1,967.96	1,905.13	62.83
Feb -00	2,724.03	2,676.50	47.53	1,949.96	1,902.81	47.15
May -00	2,728.09	2,686.40	41.69	1,941.20	1,899.81	41.39
Aug -00	2,756.51	2,714.95	41.55	1,949.08	1,907.75	41.33
Nov -00	2,764.14	2,722.65	41.49	1,945.44	1,904.11	41.33
Feb -01	2,792.03	2,750.53	41.50	1,961.19	1,919.80	41.39
May -01	2,795.34	2,753.74	41.60	1,955.00	1,913.52	41.49
Aug -01	2,805.45	2,763.87	41.58	1,947.63	1,906.15	41.49
Nov -01	2,787.71	2,746.07	41.64	1,926.79	1,885.22	41.56
Feb -02	2,787.22	2,745.67	41.56	1,923.90	1,882.45	41.45
May -02	2,807.63	2,765.82	41.80	1,925.86	1,884.16	41.70
Aug -02	2,811.43	2,769.70	41.73	1,918.07	1,876.43	41.63
Nov -02	2,818.48	2,776.64	41.83	1,912.53	1,870.79	41.74
Feb -03	2,818.57	2,776.63	41.94	1,908.90	1,867.06	41.84
May -03	2,815.66	2,773.71	41.95	1,897.03	1,855.19	41.84
Aug -03	2,819.05	2,777.28	41.77	1,888.80	1,847.11	41.69
Nov -03	2,822.27	2,780.58	41.70	1,881.88	1,840.25	41.63
Feb -04	2,819.16	2,777.62	41.54	1,873.81	1,832.35	41.46
May -04	2,814.71	2,772.93	41.79	1,859.96	1,818.25	41.70
Aug -04	2,817.01	2,775.10	41.90	1,849.78	1,807.95	41.83
Nov -04	2,814.41	2,772.23	42.17	1,840.28	1,798.18	42.10
Feb -05	2,799.87	2,757.71	42.17	1,827.15	1,785.08	42.08
May -05	2,783.72	2,741.67	42.05	1,809.98	1,768.02	41.96
Aug -05	2,767.74	2,725.55	42.20	1,793.00	1,750.89	42.11
Nov -05	2,752.90	2,710.74	42.16	1,780.31	1,738.21	42.10
Feb -06	2,747.49	2,705.58	41.91	1,768.66	1,726.82	41.84
May -06	2,730.00	2,688.14	41.86	1,750.91	1,709.12	41.79
Aug -06	2,724.98	2,683.13	41.85	1,738.64	1,696.87	41.78
Nov -06	2,714.95	2,673.05	41.90	1,724.35	1,682.52	41.83
Feb -07	2,704.10	2,662.21	41.89	1,711.63	1,669.81	41.82
May -07	2,685.32	2,643.29	42.03	1,692.66	1,650.71	41.95
Aug -07	2,683.16	2,641.11	42.05	1,681.86	1,639.88	41.98
Nov -07	2,683.75	2,641.71	42.05	1,673.10	1,631.12	41.98
Feb -08	2,659.65	2,617.88	41.77	1,655.01	1,613.31	41.70
May -08	2,637.56	2,595.83	41.73	1,634.92	1,593.27	41.65
Aug -08	2,632.00	2,590.61	41.38	1,624.20	1,582.89	41.31
Nov -08	2,593.01	2,551.88	41.13	1,597.04	1,555.97	41.07

Source: DWP Work and Pensions Longitudinal Study

1. 'IB' – Incapacity Benefit, 'SDA' – Severe Disablement Allowance.
2. Figures on 'IB' beneficiaries show those claimants who are receiving money. 'IB' claimants include those beneficiaries plus, those receiving National Insurance Credits and no monetary payment (many of whom will also receive Income Support).
3. 'Incapacity benefits' refer to recipients of 'IB' or 'SDA', including credits only cases in receipt of Income Support on the grounds of incapacity. Numbers of Working Age claimants of 'Incapacity Benefits' (IB/SDA) are shown in both the Working Age Client Group and IB/SDA sections of this release. Working Age IB/SDA totals vary slightly between the two sections (a difference of approx. 0.5%) because of minor differences in methodology.
4. Figures exclude Employment and Support Allowance which replaced Incapacity Benefit and Income Support paid on the grounds of incapacity for new claims. Claimants of ESA are not included in the November 2008 figures.



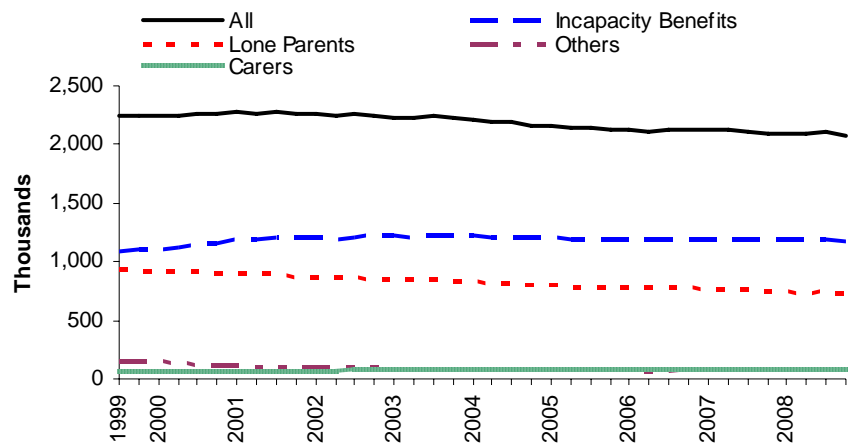
## 1.4 Income Support

Income Support (IS) was introduced on 11th April 1988 and is an income-related benefit that can be claimed by people aged 16-59 that work fewer than 16 hours a week and have insufficient income to meet their needs. Prior to the introduction of Pension Credit in October 2003, IS was available to people aged 60 and over. From 27th October 2008, Employment & Support Allowance (ESA) replaced Incapacity Benefit and Income Support paid on the grounds of incapacity for new claims. **Claimants of ESA are not included in the November 2008 figures in section 1.4.**

Pension Credit (PC) replaced Minimum Income Guarantee (MIG) in Income Support on 6 October 2003. MIG claimants have been excluded from these data.

At November 2008, the total number of Income Support (IS) claimants was 2.1 million. Claimants of incapacity benefits represented 57% of the IS caseload (1.18 million). Lone Parents (all single claimants with dependants excluding claimants of incapacity benefits) represented 35% of the IS caseload (729 thousand), while Carers and Others represented 8% of the caseload (173 thousand).

**Income Support by Statistical Group:  
August 1999 to November 2008**



There were 148 thousand new claimants of Income Support in the November 2008 quarter, which represents 7% of the November caseload. Over the same period, 168 thousand claimants left the benefit, 8% of the caseload at end of November 2008.

In the year to November 2008, there were a total of 593 thousand new claims for Income Support and 605 thousand claims were closed.

**Table 1.3 Income Support Lone Parents claimants: November 2008**

Thousands

	Total	Female	Male
all ages	729.02	696.50	32.52
unknown age	0.01	0.01	-
under 18	5.72	5.70	0.02
18-24	160.41	159.00	1.42
25-34	273.02	264.97	8.06
35-44	222.66	207.96	14.70
45-54	62.85	55.63	7.22
55-59	4.34	3.23	1.10

Source: DWP Work and Pensions Longitudinal Study

1. Lone Parents are all single claimants with dependants, but excluding claimants of incapacity benefits

Latest statistical data available from:

<http://www.dwp.gov.uk/asd/tabtool.asp>

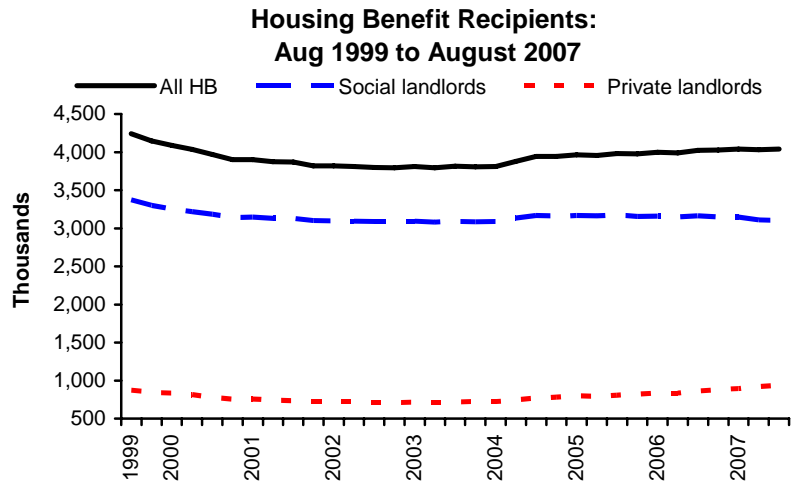
### 1.5 Housing Benefit

*Housing Benefit (HB) was introduced on 1st April 1983 and is an income-related benefit designed to help people on low incomes pay for rented accommodation whether in or out of work.*

At August 2007 there were 4.04 million recipients of Housing Benefit, of whom 1.50 million were aged 60 and over. The average weekly amount of Housing Benefit was £71.

73% of Housing Benefit recipients were also in receipt of Income Support, income-based Jobseeker's Allowance or Pension Credit (GC).

In order to produce more up-to-date and accurate data, we are currently changing our data sources. In the transition period there will be no new figures available for publication.



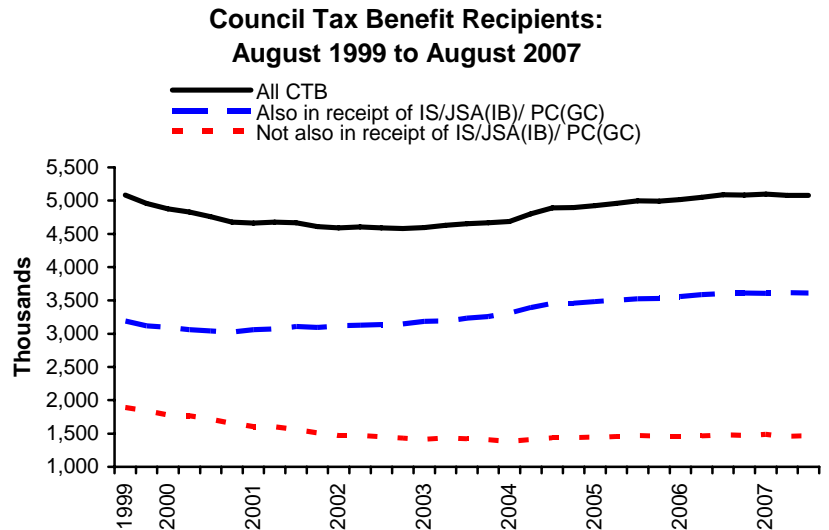
Latest statistical data available from: <http://www.dwp.gov.uk/asd/hbctb.asp>

### 1.6 Council Tax Benefit

*Council Tax Benefit (CTB) was introduced on 1st April 1993 and is an income-related benefit, calculated in a similar way to Housing Benefit, which has been designed to help people on low incomes pay their Council Tax.*

At August 2007 there were 5.08 million recipients of Council Tax Benefit (figure excludes second adult rebates), of whom 2.53 million were aged 60 and over. The average weekly amount of Council Tax Benefit was £15. 71% of Council Tax Benefit recipients were also in receipt of Income Support, income-based Jobseeker's Allowance or Pension Credit (GC).

In order to produce more up-to-date and accurate data, we are currently changing our data sources. In the transition period there will be no new figures available for publication.



Latest statistical data available from: <http://www.dwp.gov.uk/asd/hbctb.asp>



## 1.7 Widow's Benefit & Bereavement Benefit

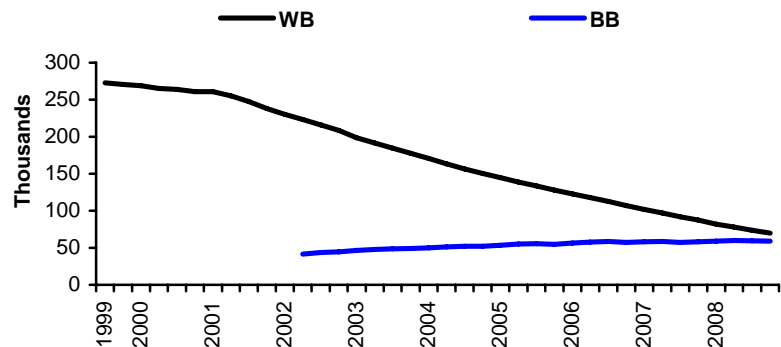
*Widow's Benefit (WB) was introduced on 6th July 1948 and is payable to women widowed between 11th April 1988 and 8th April 2001 inclusive. There are three types of WB: Widow's Payment, Widowed Mother's Allowance and Widow's Pension. Women widowed before 11th April 1988 continue to receive Widow's Benefit based on the rules that existed before that date.*

*Bereavement Benefit (BB) was introduced on 9th April 2001 as a replacement for Widow's Benefit. It is payable to both men and women widowed on or after 9th April 2001. There are three types of BB: Bereavement Payment, Widowed Parent's Allowance and Bereavement Allowance.*

At November 2008, there were 70 thousand claimants of Widow's Benefit, a fall of 18 thousand on a year earlier. Of these, 59 thousand were in receipt of Widow's Pension and 11 thousand Widowed Mother's Allowance.

At November 2008, there were 59 thousand claimants of Bereavement Benefit, an increase of 1 thousand on a year earlier. Of these, 19 thousand were in receipt of Bereavement Allowance and 41 thousand in receipt of Widowed Parent's Allowance.

**Widow's Benefit and Bereavement Benefit Recipients:  
August 1999 to November 2008**



There were 7 thousand new claimants of Bereavement Benefit/Widows Benefit in the November 2008 quarter, which represents 5% of the November 2008 caseload.

Over the same period, 12 thousand claimants left the benefits, 9% of the caseload at November 2008.

In the year to November 2008, there were a total of 26 thousand new claims for Bereavement Benefit/Widows Benefit and 46 thousand claims were closed.

Latest statistical data available from: <http://www.dwp.gov.uk/asd/tabtool.asp>



### 1.8 Fraud and Error statistics (link)

National Statistics are published regularly, presenting six-monthly estimates of fraud and error in claims for Income Support, Jobseeker’s Allowance, Pension Credit and Housing Benefit, along with an annual estimate of the level of fraud and error in the benefit system as a whole. One-off benefit reviews have been carried out from time to time to estimate fraud and error in claims for other benefits. All these reports can be found at [http://www.dwp.gov.uk/asd/asd2/fraud\\_error.asp](http://www.dwp.gov.uk/asd/asd2/fraud_error.asp)

### 1.9 Take-Up of Income-Related Benefits (link)

Publications contain information on the take-up of the main income-related benefits in Great Britain: Income Support, Pension Credit, Housing Benefit, Council Tax Benefit and Jobseeker’s Allowance (income based). Take-up is measured in two ways. Expenditure take-up compares the total amount of benefit received in the course of a year with the total amount that would have been received if everyone took up their entitlement for the full period of entitlement. Caseload take-up compares the number of benefit claimants – averaged over the year – with the number who would be receiving if everyone took up their entitlement for the full period of entitlement. Data is sourced from the Family Resources Survey and administrative benefit records. Latest published figures are available at <http://www.dwp.gov.uk/asd/irb.asp>

### 1.10 Jobseeker’s Allowance sanction and disallowance decisions

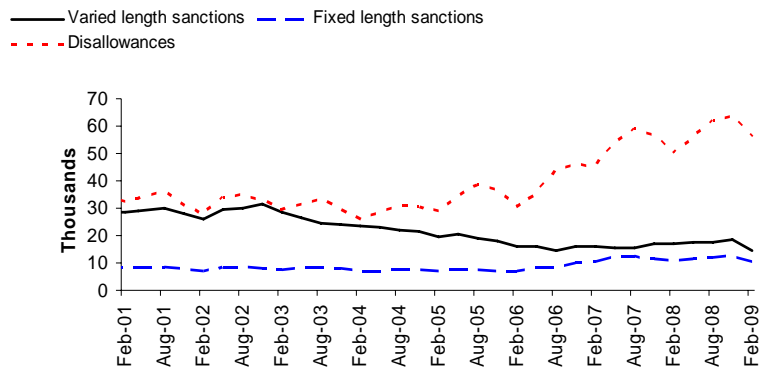
A JSA claimant can have their claim sanctioned (payment is temporarily suspended) or disallowed (entitlement ends) if they are deemed not to have just cause for failing to fulfil the conditions of their claim. Sanctions can be ‘Varied length’ (anything up to 26 weeks) or ‘Fixed length’ (2, 4 or 26 weeks). Disallowances result in the claim ending.

In the quarter ending February 2009 there were 142 thousand decisions made, of which 81 thousand were adverse decisions (i.e. a sanction or disallowance was applied).

Of these, 14 thousand were varied length sanctions, 11 thousand were fixed length sanctions and 56 thousand were disallowance decisions. 57% of decisions made in this quarter resulted in an adverse decision.

NB – this summary includes data on decisions made for sanction referrals only, not opinions.

Adverse decisions for JSA Labour Market questions for sanctions and disallowances per quarter: February 2001 to February 2009



Latest statistical data available from: <http://83.244.183.180/sanction/sanction/LIVE/tabtool.html>



### 1.11 New Deals & Employment Zones

New Deal for Young People was established in 1998 aimed at people aged 18 to 24 unemployed for at least 6 months. Since then a range of other mandatory and voluntary New Deal programmes have been established aimed at specific client groups.

3.35 million people had started on a New Deal programme up to February 2009.

Up to November 2008, some 2.14 million people have gained a job through the New Deal programme, with an additional 108 thousand people gaining a job through Employment Zones up to January 2009.

New Deal for Lone Parents (NDLP) and New Deal for Disabled People (NDDP) participants and leavers series have been withdrawn and they will be revised at the earliest available opportunity.

People starting a New Deal, Cumulative to Feb 2009

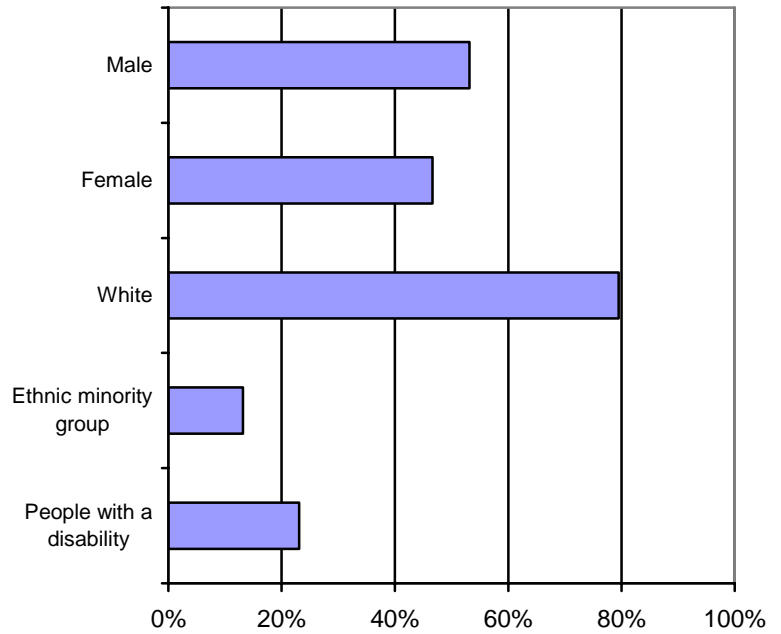


Table 1.4 Summary of New Deal and Employment Zones

Thousands

	New Deal for:						Employment Zones
	Young People	25+	Lone Parents <sup>5</sup>	Disabled People <sup>5</sup>	50+ <sup>3</sup>	Partners <sup>4</sup>	
<i>latest data</i> <sup>1</sup>							
People Starting <sup>2</sup>	1,397.0	815.3	947.0	319.5	104.1	19.1	220.1
Currently Participating	77.0	54.0	-	-	16.2	4.5	26.6
People gaining a Job	866.4	358.4	614.7	197.9	192.5	7.8	108.4

Source: New Deal Evaluation Database

1. Latest data relates to end of February 2009 for people starting NDYP, ND25+, NDLP, NDDP, ND50+ and NDP. For current participants and people gaining a job through NDYP, ND25+, NDLP, NDDP, ND50+ and NDP, latest data relates to the end of November 2008. Latest Employment Zone data is from January 2009.
2. The sum of people starting and gaining a job for each separate New Deal will not equal the number of people starting and gaining a job through the New Deal as a whole (as indicated above) because some people will start and gain a job through more than one New Deal programme.
3. Starts for ND50+ are from January 2004 onwards. The jobs figures for ND50+ also include 98,040 individuals who had received Employment Credit up to March 2003.
4. Starts for NDP also include 7,820 individuals from starts up to March 2004 and jobs for NDP also include a further 1,860 jobs from up to March 2004.
5. Statistics relating to current participants and leavers from NDDP and NDLP have been withdrawn for quality reasons.

Latest statistical data available from:

[http://www.dwp.gov.uk/asd/asd1/tabtools/tabtool\\_nd.asp](http://www.dwp.gov.uk/asd/asd1/tabtools/tabtool_nd.asp)



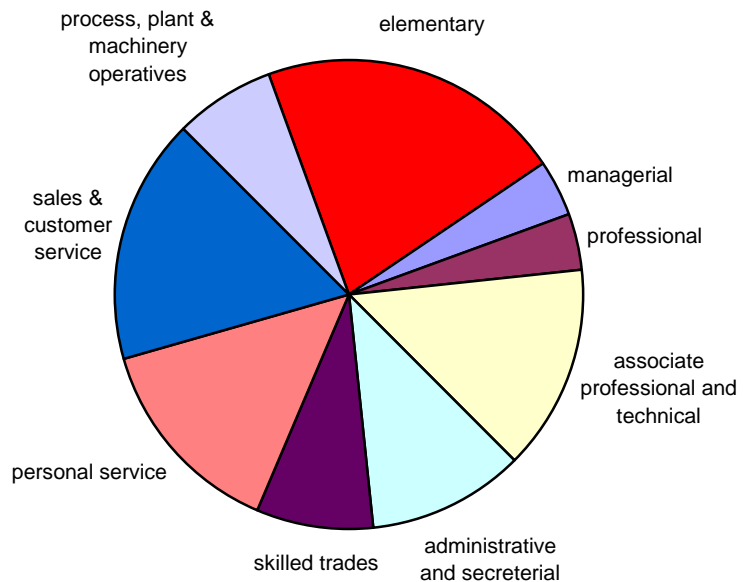
### 1.12 Vacancies handled by Jobcentre Plus

As the public employment service for Great Britain, Jobcentre Plus handle a significant share of all vacancies advertised by employers, albeit that vacancies notified to Jobcentre Plus do not represent the total number of vacancies in the whole economy.

On average, 221 thousand vacancies a month were notified to Jobcentre Plus between January and March 2009. Most commonly these are for elementary occupations (21%) and sales/customer services (17%). 14% of notified vacancies are in the North West region compared to 10% in London, 7% Wales and 6% Scotland.

As at March 2009, the number of unfilled vacancies available to jobseekers was 232 thousand.

**Vacancies notified by occupation: January to March 2009**



Latest statistical data available from <http://www.nomisweb.co.uk>

## 2. Pensioners

### 2.1 Pensioner client group

The Pensioner client group covers claimants, over State Pension age (currently 60 for females and 65 for males), of at least one of the following benefits: State Pension, Pension Credit, Attendance Allowance, Widow's Benefit, Disability Living Allowance, Incapacity Benefit, and Severe Disablement Allowance. They are split into statistical groups that reflect their main reason for claiming benefit.

At November 2008 there were 12.4 million claimants in the Pensioner Client Group, an increase of 214 thousand since November 2007. Of these, 20% were in receipt of Pension Credit. 49% of these Pension Credit claimants were also claiming Attendance Allowance or Disability Living Allowance.

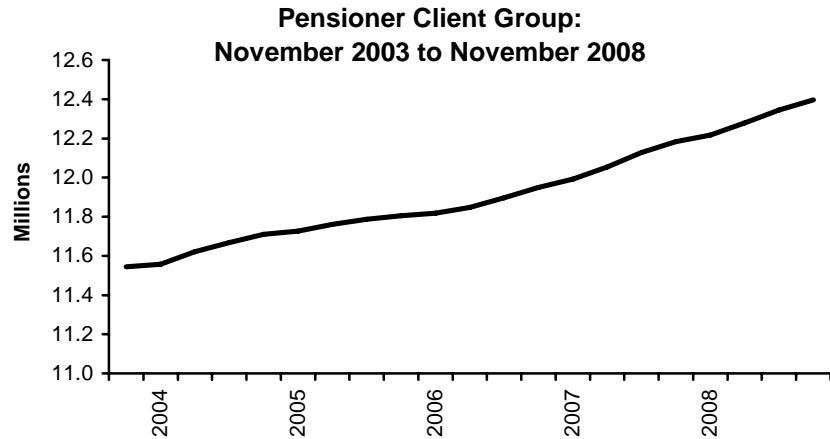


Table 2.1 Pensioner Client Group recipients: November 2003 – November 2008

Thousands

	Total	SP and PC: Disabled	SP and PC: Not Disabled	SP but not PC: Disabled	SP but not PC: Not Disabled	PC but not SP: Disabled	PC but not SP: Not Disabled	Neither SP nor PC: Disabled	Neither SP nor PC: Not Disabled
Nov -03	11,544.62	806.98	952.06	1,414.29	8,165.73	71.35	70.28	39.17	24.76
Feb -04	11,557.87	868.52	1,083.74	1,360.45	8,039.64	71.27	70.62	38.89	24.72
May -04	11,620.15	959.75	1,193.56	1,296.11	7,964.86	71.80	71.35	38.08	24.64
Aug -04	11,668.11	1,003.82	1,245.69	1,282.39	7,929.91	72.57	71.81	37.76	24.16
Nov -04	11,710.58	1,028.05	1,255.69	1,280.46	7,938.11	73.38	72.83	37.97	24.10
Feb -05	11,726.47	1,037.26	1,268.33	1,273.89	7,938.28	73.49	73.51	37.74	23.98
May -05	11,760.74	1,052.43	1,281.60	1,281.06	7,939.49	73.17	72.88	37.11	23.00
Aug -05	11,786.58	1,065.96	1,280.72	1,298.46	7,933.04	73.71	73.80	37.60	23.30
Nov -05	11,804.43	1,075.10	1,278.42	1,307.14	7,929.69	75.54	75.42	39.48	23.63
Feb -06	11,817.23	1,081.17	1,277.97	1,315.46	7,934.50	73.53	73.75	37.77	23.08
May -06	11,847.97	1,088.48	1,278.31	1,322.93	7,949.50	73.76	74.05	38.06	22.88
Aug -06	11,896.50	1,100.55	1,274.33	1,338.09	7,973.44	74.29	74.59	38.42	22.78
Nov -06	11,949.62	1,113.70	1,269.09	1,351.57	8,004.82	74.87	74.34	38.69	22.54
Feb -07	11,992.45	1,114.06	1,260.09	1,356.42	8,052.20	74.56	74.19	38.60	22.33
May -07	12,053.77	1,122.36	1,252.29	1,370.93	8,097.85	74.82	74.26	38.97	22.29
Aug -07	12,127.16	1,133.46	1,243.25	1,389.71	8,152.28	74.55	73.62	38.92	21.37
Nov -07	12,182.27	1,140.25	1,234.23	1,403.83	8,197.32	74.21	73.15	38.72	20.56
Feb -08	12,216.39	1,139.13	1,223.86	1,410.21	8,237.94	73.56	72.92	38.75	20.02
May -08	12,279.39	1,144.14	1,214.40	1,428.68	8,287.34	73.68	72.69	38.97	19.50
Aug -08	12,344.41	1,155.40	1,206.30	1,448.69	8,331.36	73.72	72.04	38.76	18.14
Nov -08	12,396.06	1,164.55	1,201.42	1,464.57	8,365.41	73.51	71.41	38.17	17.02

Source: DWP Work and Pensions Longitudinal Study

Latest statistical data available from:

<http://www.dwp.gov.uk/asd/tabtool.asp>



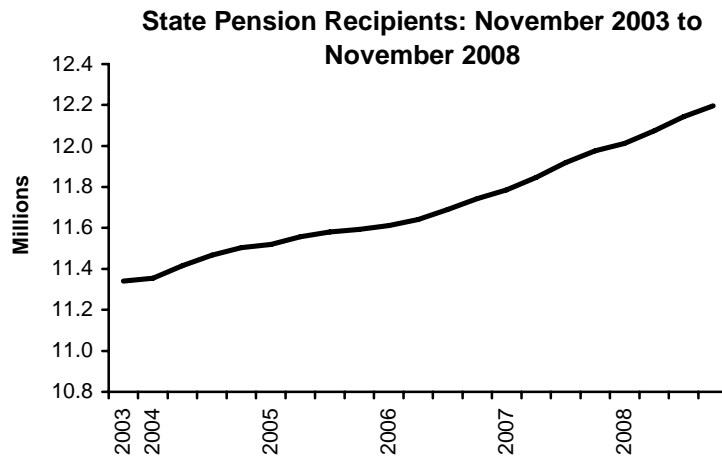
## 2.2 State Pension

State Pension (SP) was introduced on 1st January 1909 and is paid to people who have reached the state pension age and who fulfil the residency and contributions conditions. The state pension age for men is 65 whilst the State Pension age for women born on or after 6 April 1950 but before 6 April 1955 is rising from 60 to 65 between 2010 and 2020. The State Pension age for women born on or after 6 April 1955 but before 6 April 1959 will be 65. State Pension age will increase for both men and women from age 65 to 68 between 2024 and 2046.

At November 2008, there were 12.2 million claimants of State Pension, a rise of 220 thousand on a year earlier. Of these, 38% were male and 62% female.

The average weekly amount in payment at November 2008 was £96.45, a rise of £4.52 since November 2007.

There were 164 thousand new claimants of State Pension in the November 2008 quarter, which represents 1.3% of the November caseload. Over the same period, 119 thousand claimants left the benefit, 1% of the caseload at November 2008.



In quarter to November 2008, there were a total of 164 thousand new claims for State Pension and 119 thousand claims were closed.

Table 2.2 State Pension recipients: November 2003 – November 2008

	All	Male	Female
Nov -03	11,340.71	4,249.69	7,091.01
Feb -04	11,354.10	4,255.94	7,098.16
May -04	11,416.15	4,281.06	7,135.09
Aug -04	11,466.30	4,301.68	7,164.61
Nov -04	11,504.32	4,315.80	7,188.52
Feb -05	11,519.88	4,322.52	7,197.36
May -05	11,556.81	4,342.15	7,214.66
Aug -05	11,580.50	4,354.75	7,225.74
Nov -05	11,592.75	4,362.20	7,230.55
Feb -06	11,611.59	4,369.79	7,241.80
May -06	11,641.83	4,379.54	7,262.29
Aug -06	11,689.12	4,393.60	7,295.52
Nov -06	11,742.01	4,408.91	7,333.10
Feb -07	11,785.67	4,418.99	7,366.68
May -07	11,846.43	4,437.99	7,408.44
Aug -07	11,919.12	4,463.09	7,456.04
Nov -07	11,976.03	4,484.97	7,491.06
Feb -08	12,011.54	4,499.53	7,512.02
May -08	12,074.99	4,526.79	7,548.20
Aug -08	12,142.20	4,555.63	7,586.57
Nov -08	12,196.44	4,578.74	7,617.70

Source: DWP Work and Pensions Longitudinal Study

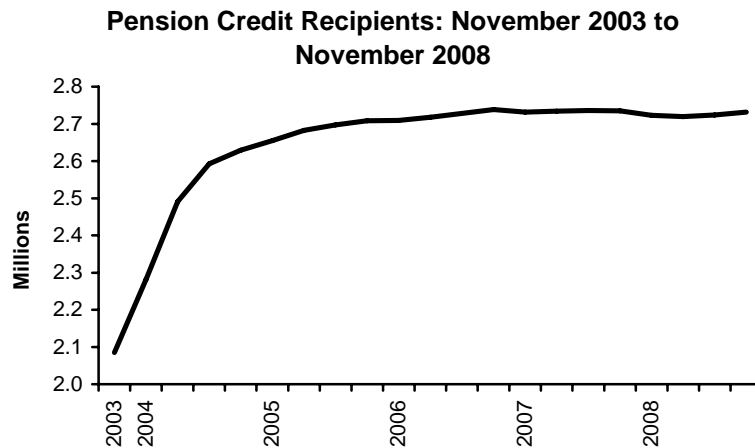
Latest statistical data available from: <http://www.dwp.gov.uk/asd/tabtool.asp>



### 2.3 Pension Credit

Pension Credit (PC) was introduced on 6th October 2003 and replaced Minimum Income Guarantee (MIG). For people aged 60 or over, the Guarantee Credit element guarantees an income at a set level. People aged 65 or over (and couples where one member is 65 or over) may also be entitled to Savings Credit if they have modest income from savings, investments or a second pension.

At August 2008, there were 2.73 million claimants of Pension Credit (3.34 million including partners), a fall of 3 thousand on a year earlier. Of these, 901 thousand claimed Guarantee Credit only, 1.23 million claimed Guarantee and Savings Credit, and 598 thousand were claiming Savings Credit only. The average weekly amount of Pension Credit in payment at November 2008 was £52.82, a rise of £2.48 since November 2007.



Experimental statistics on benefit flows show there were 247 thousand new claims to Pension Credit in the year to November 2008. A small number of claims take a long time to process and are still outstanding at the cut off point for producing these statistics. This means that the statistics undercounts the final number of claims by a small percentage (around two percent).

Table 2.2 Pension Credit claimants: November 2003 – November 2008

	<i>Thousands</i>				
	Total	Guarantee Credit only	Guarantee Credit & Savings Credit	Savings Credit only	Still on Minimum Income Guarantee
Nov-03	2,084.70	709.31	1,133.01	242.01	0.37
Feb-04	2,282.29	719.18	1,196.59	365.26	1.25
May -04	2,490.76	735.03	1,269.45	485.98	0.31
Aug -04	2,592.59	749.17	1,293.25	549.99	0.18
Nov -04	2,629.58	759.90	1,298.96	570.58	0.14
Feb -05	2,654.67	763.15	1,313.11	578.36	0.06
May -05	2,682.73	767.26	1,321.68	593.74	0.04
Aug -05	2,696.66	772.40	1,317.18	607.04	0.04
Nov -05	2,708.05	776.94	1,313.48	617.60	0.04
Feb -06	2,709.22	773.16	1,332.11	603.93	0.04
May -06	2,717.39	775.57	1,343.23	598.56	0.02
Aug -06	2,728.15	787.30	1,334.41	606.41	0.02
Nov -06	2,738.56	798.13	1,325.87	614.54	0.02
Feb -07	2,730.94	800.11	1,327.78	603.03	0.03
May -07	2,733.50	805.73	1,330.09	597.65	0.02
Aug -07	2,735.72	814.42	1,321.95	599.33	0.03
Nov -07	2,734.54	823.57	1,310.05	600.90	0.03
Feb -08	2,723.14	865.19	1,265.43	592.50	0.02
May -08	2,719.14	882.07	1,246.24	590.80	0.03
Aug -08	2,723.53	889.74	1,241.62	592.15	0.03
Nov -08	2,731.37	901.23	1,232.25	597.86	0.03

Source: DWP Work and Pensions Longitudinal Study

1. Pension Credit replaced MIG on the 6<sup>th</sup> Oct 2003, however a small number of cases are yet to be converted to PC

Latest statistical data available from: <http://www.dwp.gov.uk/asd/tabtool.asp>

### 3. Disabled and Carers

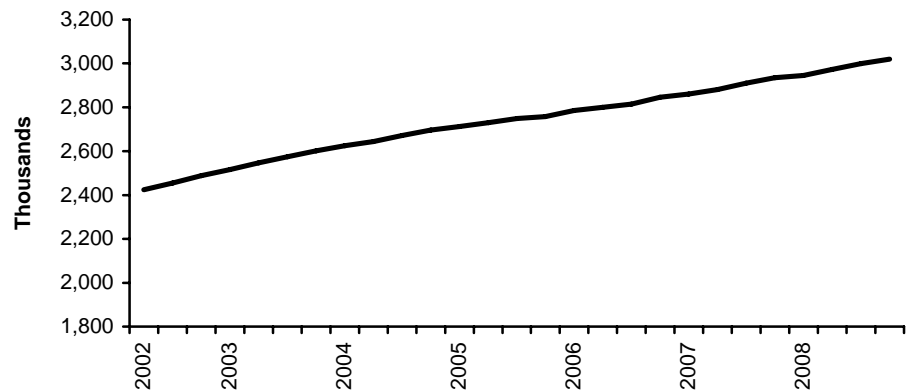
#### 3.1 Disability Living Allowance

*Disability Living Allowance (DLA) was introduced on 1st April 1992 and is a benefit for people who have become disabled before the age of 65 and who need assistance with personal care or mobility.*

At November 2008, 3.02 million people were receiving Disability Living Allowance (not including suspended cases), a rise of 85 thousand on a year earlier. Of these claimants 50% were male. Both the male and female caseloads are rising, males by 41 thousand and females by 45 thousand in the year to November 2008.

At November 2008, 10% of recipients were children, 57% were working age and 33% were pension age (a small number are an unknown age).

**Disability Living Allowance Recipients:  
May 2002 to November 2008**



Latest statistical data available from:

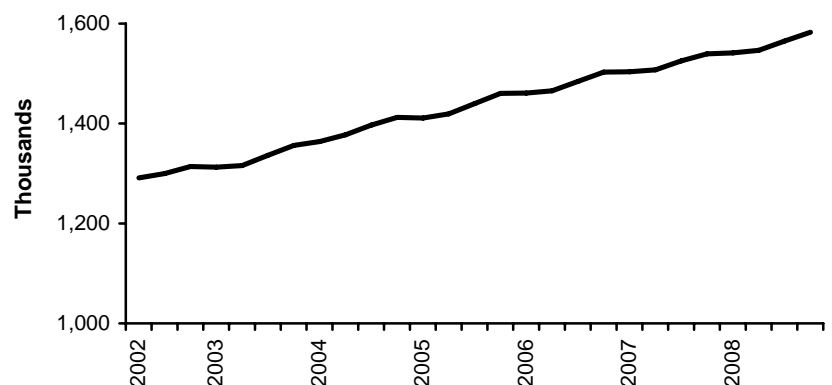
<http://www.dwp.gov.uk/asd/tabtool.asp>

#### 3.2 Attendance Allowance

*Attendance Allowance (AA) was introduced on 6th December 1971 and is a benefit for people over the age of 65 who are so severely disabled, physically or mentally, that they need a great deal of help with personal care or supervision. Those requiring constant help receive the higher rate of benefit.*

At November 2008 there were 1.58 million people receiving Attendance Allowance (excluding suspended cases), a rise of 43 thousand on a year earlier. Of these, 32% were male and 68% female. Both the male and female caseloads are rising, males by 21 thousand and females by 23 thousand in the year to November 2008. At November 2008, 66% were aged 80 or over.

**Attendance Allowance Cases in Payment:  
May 2002 to November 2008**



Latest statistical data available from:

<http://www.dwp.gov.uk/asd/tabtool.asp>



### 3.3 Carer's Allowance

Carer's Allowance (CA) was introduced on 5th July 1976; it is paid to carers who look after a severely disabled person for at least 35 hours a week. The severely disabled person must be getting either higher or middle rate DLA care component or AA or maximum rate Constant Attendance Allowance with their War Pension or Industrial Injuries Disablement Benefit.

At November 2008, there were 496 thousand people receiving Carer's Allowance (not including underlying entitlement cases). 26% of claimants were male, and 74% female.

At November 2008, there were a further 419 thousand people entitled to Carer's Allowance but not receiving any payment due to overlapping benefit provisions (i.e. underlying entitlement cases).

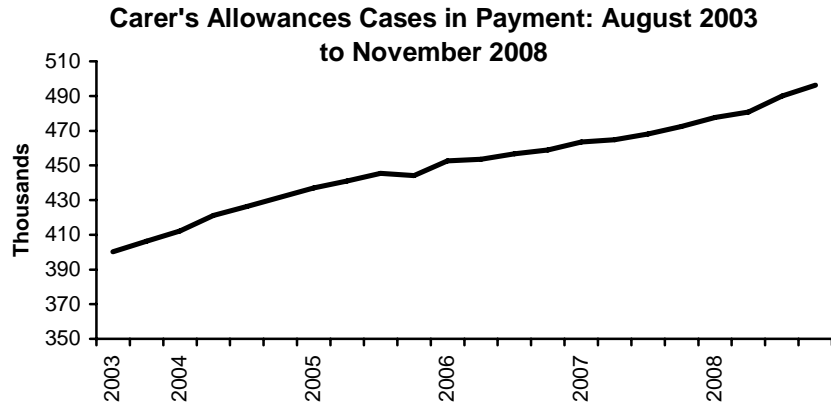


Table 3.1 Awards currently in payment for Disability Living Allowance, Carer's Allowance and Attendance Allowance: May 2002 – November 2008

Thousands

	Disability Living Allowance	Attendance Allowance	Carer's Allowance <sup>1</sup>
May-02	2,424.35	1,290.77	"
Aug-02	2,454.34	1,300.09	"
Nov -02	2,488.49	1,313.74	"
Feb -03	2,516.13	1,312.75	"
May -03	2,547.09	1,315.64	"
Aug -03	2,573.54	1,336.21	400.18
Nov -03	2,601.88	1,356.31	406.23
Feb -04	2,625.39	1,363.81	412.12
May -04	2,644.28	1,377.35	421.18
Aug -04	2,672.16	1,397.30	426.34
Nov -04	2,696.28	1,412.50	431.66
Feb -05	2,712.91	1,411.33	436.94
May -05	2,729.72	1,419.42	441.03
Aug -05	2,749.48	1,440.09	445.43
Nov -05	2,757.64	1,460.25	444.09
Feb -06	2,785.68	1,460.57	452.54
May -06	2,799.16	1,465.59	453.54
Aug -06	2,814.29	1,484.58	456.70
Nov -06	2,845.75	1,503.05	458.93
Feb -07	2,860.79	1,503.85	463.50
May -07	2,881.83	1,507.50	464.67
Aug -07	2,909.98	1,525.61	468.06
Nov -07	2,934.44	1,539.32	472.42
Feb -08	2,945.57	1,541.58	477.66
May -08	2,973.54	1,546.68	480.73
Aug -08	2,999.65	1,565.00	490.03
Nov -08	3,019.70	1,582.81	496.14

Source: DWP Work and Pensions Longitudinal Study

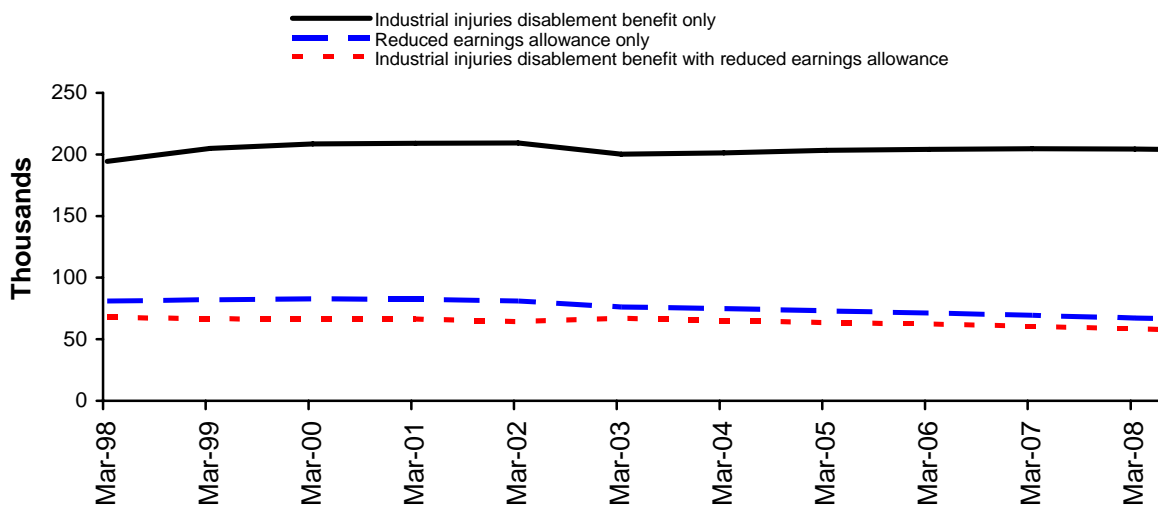
1. Data is not available prior to August 2003.

### 3.4 Industrial Injuries Disablement Benefit

*Industrial Injuries Disablement Benefit (IIDB) was introduced on 5th July 1948 and is a benefit for people who are disabled because of an industrial accident or prescribed industrial disease. Since 1st October 1986 any claim resulting in an assessment of less than 14% disabled does not normally attract benefit.*

There were 328 thousand people claiming under the Industrial Injuries Disablement Benefit scheme in September 2008, of whom 62% received Industrial Injuries Disablement Benefit only, 20% received Reduced Earnings Allowance only, and 18% received both. The number of people claiming benefit was 1.2% lower than in September 2007. The average weekly payment was £45.55.

**Industrial injuries disablement benefit and reduced earnings allowance in payment by type of assessments payable: March 1998 to September 2008**



Latest statistical data available from: <http://www.dwp.gov.uk/asd/iidb.asp>

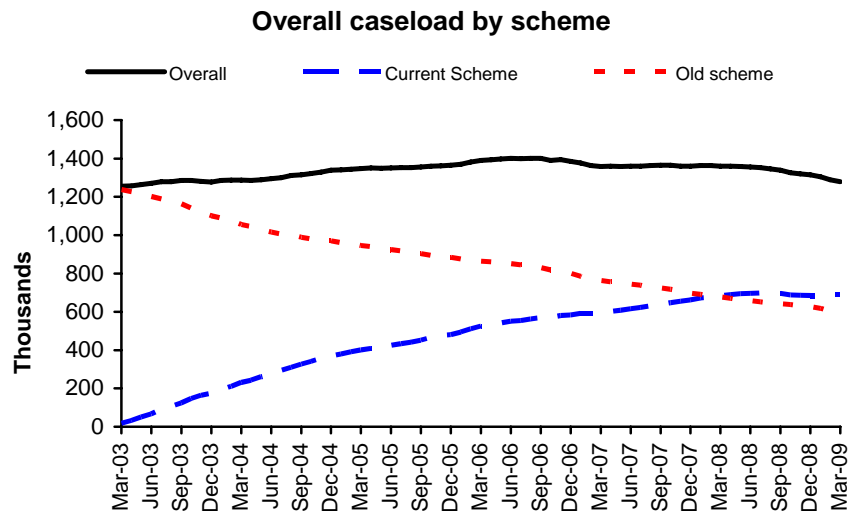
## 4. Families & Children

### 4.1 Child Support Agency cases

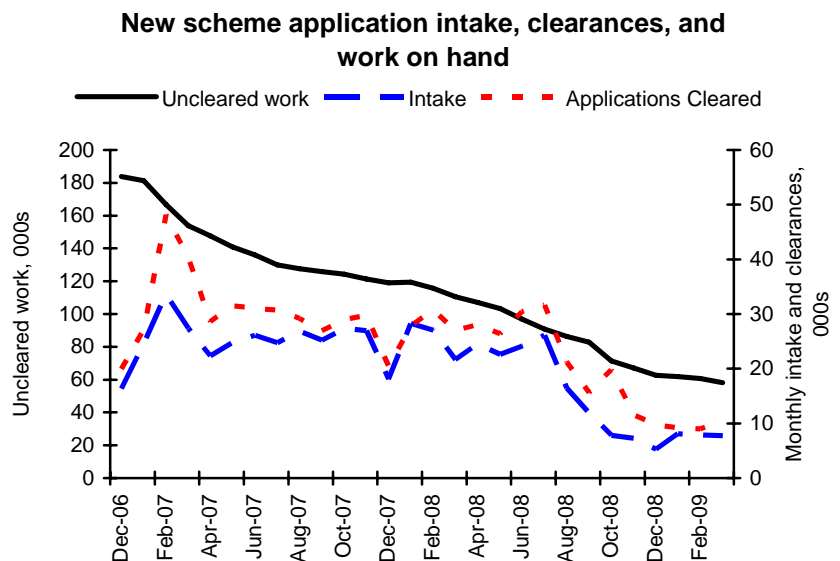
The Child Maintenance and Enforcement Commission (CMEC), established as a non-departmental public body under the Child Maintenance and Other Payments Act 2008, is responsible for the child maintenance system in Great Britain. The Commission assumed responsibility for the Child Support Agency (CSA) from the Department for Work and Pensions (DWP) on 1 November 2008.

These statistics, produced by the DWP Information Directorate on behalf of the Child Maintenance and Enforcement Commission, contain the most up-to-date tables and breakdowns on the CSA's two existing statutory child maintenance schemes. The CSA statistics presented here were released on 29th April 2009.

At the end of March 2009, the CSA caseload stood at 1.28 million.



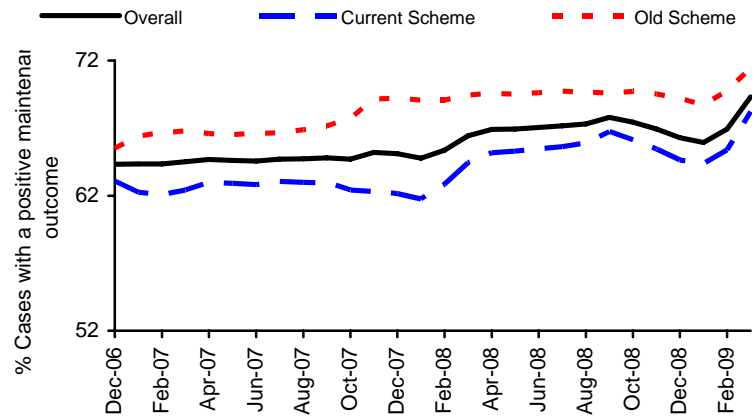
At the end of March 2009, there were 64,900 un-cleared applications across both schemes (not including clerical performance), a fall of 52% over the previous twelve months. The volume of un-cleared current scheme applications has fallen by 57,700 since March 2008 and, at 49,200 (including clerical cases) is at its lowest since May 2003. This represents a fall of 54% since March 2008.





In the quarter ending March 2009 71% of all cases (including clerical cases) in which maintenance was due had either received maintenance via the CSA collection service, or had a maintenance direct arrangement in place.

### Rolling last quarter positive maintenance outcomes for 'live' and assessed CS2 and CSCS cases with a positive maintenance liability



Latest statistical data available from

<http://www.childmaintenance.org/publications/statistics.html>



## 5. Appeals Service

### 5.1 Appeals Service lodgements

*The Independent Tribunal Service was introduced in 1984 to provide an independent appeals system. It was replaced by the Appeals Service (tAS) in April 2000. From 1st April 2006 the Appeals Service, was renamed as the Social Security and Child Support Appeals Tribunal (SSCSA) and became part of The Tribunals Service (a new Executive agency within the Department for Constitutional Affairs). For operational reasons, the DWP is continuing to produce statistics on its behalf. In a rolling program over 2006, SSCSA has replaced GAPS (the Generic Appeals Processing System) with a new system: GAPS2. The last month for which reliable figures can be produced (under GAPS1) is May 2006. It is not yet possible to provide reliable figures for the Statistical Summary under the new system. Therefore no figures are published here. When reliable figures become available the Appeals Section of the Statistical Summary will be resumed.*

Latest statistical data available from <http://www.dwp.gov.uk/asd/qat.asp>



## NOTES TO EDITORS

### 1. Modernisation of DWP statistics

The National Statistics paper "DWP statistics transformed: the modernisation of the DWP's data sources and statistical publications" announced major changes to the National Statistics the Department publishes, both in the data sources employed and the methods of dissemination. The paper is available from:  
[http://www.dwp.gov.uk/asd/asd1/stats\\_consultation/modstats.pdf](http://www.dwp.gov.uk/asd/asd1/stats_consultation/modstats.pdf)

### 2. Links to internet-based statistical tables

For each statistic in this publication, access to more detailed statistics are available by clicking on the web links. For benefit, New Deal and vacancy statistics derived from 100% sources, an internet-based Tabulation Tool is available with the ability for users to define their own statistical queries (available at: <http://www.dwp.gov.uk/asd/tabtool.asp>). A similar Tabulation Tool, derived from 5% sample data, is also available. Data on key benefits continue to be available via NOMIS (<http://www.nomisweb.co.uk/>). Whenever possible, 100% data should be used in preference to 5% estimates, as these are both more accurate and form DWP's headline statistics. Some statistics remain outside the scope of the Tabulation Tool but will continue to be available via the internet as pre-defined summary tables.

### 3. Statistical groups

DWP has introduced a new typology to define Statistical Groups within the client group classifications. The aim of the Statistical Group typology is to present each person by the main reasons they are in contact with the Department. Like the client group classification, each client is classified just once, permitting the estimation of the total number of people claiming one or more benefits. The Statistical Group hierarchy is:

- |   |                                  |
|---|----------------------------------|
| a] Jobseeker  | e] Other income-related benefits |
| b] Employment and Support Allowance and incapacity benefits | f] Disabled                      |
| c] Lone parents   | g] Bereaved                      |
| d] Carer's  | h] Housing Benefit               |
|   | i] State Pension only recipients |

From November 2008 the "incapacity benefits statistical group" includes Employment and Support Allowance (ESA). ESA replaced Incapacity Benefit and Income Support paid on the grounds of incapacity for new claims from 27th October 2008. Prior to this the "incapacity benefits group" covered people on Incapacity Benefit or Severe Disablement Allowance, including people claiming Income Support on the grounds of incapacity.

More information can be found in the National Statistics paper described in paragraph 1 above.

### 4. Jobseeker's Allowance figures at ONS

The preferred source of numbers for Jobseeker's Allowance is the ONS claimant count figure; these are more up to date and contain clerical cases. However the reason we use the DWP JSA figures is that they are consistent with the other benefits used to produce DWP National Statistics, and permit a wider set of breakdowns.

### 5. Flows on and off benefit

Also available are quarterly experimental figures on flows on and off all the main benefits. It is important that users clearly understand the status of these series and the cautions that apply (which will vary for each statistic). The particular limitations of each series are explained in the information that accompanies them.

### 6. Housing and Council Tax Benefits data

Housing Benefit and Council Tax Benefit data was previously derived from paper returns sent to the DWP by local authorities. However, in order to produce more accurate and up-to-date benefit data the DWP now derive the information electronically directly from the local authority. During this period of transition there will be no new figures available for publication and the latest data will refer to August 2007.



## 7. National Insurance Number Allocations to Overseas Nationals data

In line with the recommendations from the Inter-Departmental Taskforce on Migration Statistics, and to ensure our information can be considered alongside other relevant statistics on migration and employment, quarterly data on allocations of National Insurance numbers to overseas nationals has now been published. Latest publications can be viewed here: <http://www.dwp.gov.uk/asd/tabtool.asp>

## 8. Welfare Reform

Employment Support Allowance replaced Incapacity Benefit and Income Support paid on the grounds of incapacity on 27<sup>th</sup> October 2008 for new claims. The figures relating to Employment Support Allowance have been thoroughly quality assured to National Statistics standard; however it should be noted that this is a new benefit using a new data source which may not have reached steady state in terms of operational processing and retrospection. Hence ESA and working age client group figures (excluding Jobseekers Allowance) for November 2008 are provisional.

## 9. Revisions to small area statistics

Since the last release of benefit National Statistics in November, it has come to light that a small proportion of claimants have been counted as living in an incorrect parliamentary constituency, ward or smaller geographic breakdown. This error has occurred in the February 2008 and May 2008 statistics (released in August and November 2008 respectively). The corrected numbers were released in early May 2009.

## 10. Other National Statistics issued by the Department for Work and Pensions

Abstract of Statistics for Benefits and Contributions and Indices of Prices and Earnings (annual) – *provides a reference source for those people interested in the main aspects of benefits, contributions and indices of prices and earnings. Latest published figures: [http://www.dwp.gov.uk/asd/other\\_stats.asp](http://www.dwp.gov.uk/asd/other_stats.asp)*

Appeal Tribunal Statistics (quarterly) – *provides statistics on appeals and decisions. Latest published figures: <http://www.dwp.gov.uk/asd/qat.asp>*

Child Support Agency Quarterly Summary of Statistics – *provides statistics on the Child Support Agency. Latest published figures: <http://www.childmaintenance.org/publications/statistics.html>*

Contributions and Qualifying Years for Retirement Pension (annual) – *provides statistics on the number of people who have qualified for State Pension.*

Family Resources Survey (annual) - *provides information on the incomes and circumstances of private households in the United Kingdom: <http://www.dwp.gov.uk/asd/frs>*

Households Below Average Income (annual) - *provides information on potential living standards as determined by disposable income, changes in income patterns over time and income mobility: <http://www.dwp.gov.uk/asd/hbai.asp>*

Housing Benefit and Council Tax Benefit Annual Summary of Statistics – *provides statistics on Housing Benefit /Council Tax Benefit from a 1 per cent sample of data from Local Authorities. Latest published figures: <http://www.dwp.gov.uk/asd/hbctb.asp>*

Housing Benefit and Council Tax Benefit Quarterly Summary of Statistics – *provides statistics on Housing Benefit /Council Tax Benefit from quarterly caseload counts and also includes average amounts of benefit. Latest published figures: <http://www.dwp.gov.uk/asd/hbctb.asp>*



Housing Benefit and Council Tax Benefit Quarterly Performance Statistics – provides high level statistics on Local Authority processing of Housing Benefit / Council Tax Benefit from quarterly administrative returns and also includes speed of processing new claims and charges of circumstances.

Latest published figures:

[http://www.dwp.gov.uk/asd/asd1/hb\\_ctb/performance/performance.asp](http://www.dwp.gov.uk/asd/asd1/hb_ctb/performance/performance.asp)

Housing Benefit Quarterly Fraud Performance Statistics – provides high level statistics on Local Authority fraud performance from quarterly administrative returns and also includes numbers of referrals, investigations actioned and sanctions administered. Latest published figures:

[http://www.dwp.gov.uk/asd/asd1/hb\\_ctb/performance/performance.asp](http://www.dwp.gov.uk/asd/asd1/hb_ctb/performance/performance.asp)

Industrial Injuries Disablement Benefit and Reduced Earnings Allowance Statistics (annual) – provides statistics on current assessments and movements during statistical period. Latest published figures:

<http://www.dwp.gov.uk/asd/iidb.asp>

Industrial Injuries Disablement Benefit Quarterly Summary of Statistics – provides statistics on people in receipt of Industrial Injuries Disablement Benefit, new claims and newly diagnosed prescribed diseases.

Latest published figures: <http://www.dwp.gov.uk/asd/iidb.asp>

National Insurance numbers allocated to overseas nationals (Previously migrant workers statistics – quarterly) provides statistics on migrant workers. Latest published figures:

[http://www.dwp.gov.uk/asd/tabtool.asp#ni\\_alloc](http://www.dwp.gov.uk/asd/tabtool.asp#ni_alloc)

Neighbourhood Statistics – Quarterly ward and Lower Super Outputs Area caseloads for Income Support, Jobseeker's Allowance, Incapacity Benefits, Disability Living Allowance, Attendance Allowance, Pension Credit and State Pension are available from: <http://193.115.152.21/NESS/page1.html>

Pensioner Income Series (annual) - examines the levels, sources and distribution of pensioners' incomes and the position of pensioners within the population income distribution. Latest published figures:

[http://www.dwp.gov.uk/asd/asd6/pensioners\\_income.asp](http://www.dwp.gov.uk/asd/asd6/pensioners_income.asp)

Second Tier Pension Provision (annual) – contains analysis of contracted out pension schemes. Latest published figures: [http://www.dwp.gov.uk/asd/asd1/dsu/second\\_tier/second\\_tier.asp](http://www.dwp.gov.uk/asd/asd1/dsu/second_tier/second_tier.asp)

Tax/Benefit Model Tables (annual) – designed to illustrate the weekly financial circumstances of a selection of hypothetical local authority and private tenants. Latest published figures: <http://www.dwp.gov.uk/asd/tbmt.asp>

## **11. Other statistical outputs issued by the Department for Work and Pensions**

Benefit Expenditure Tables - financial year historic information on benefit expenditure and caseloads, along with forecasts are available from <http://www.dwp.gov.uk/asd/asd4/expenditure.asp>